

# FOR LEASE

Baltimore County, MD

## 16 STENERSEN LANE - SUITE 2A

COCKEYSVILLE, MARYLAND 21030

### AVAILABLE

4,300 sf

### BUILDING SIZE

164,598 sf

### SITE SIZE

7.96 Acres

### ZONING

ML-IM

### PARKING

Ample on and off street parking

### RENTAL RATE

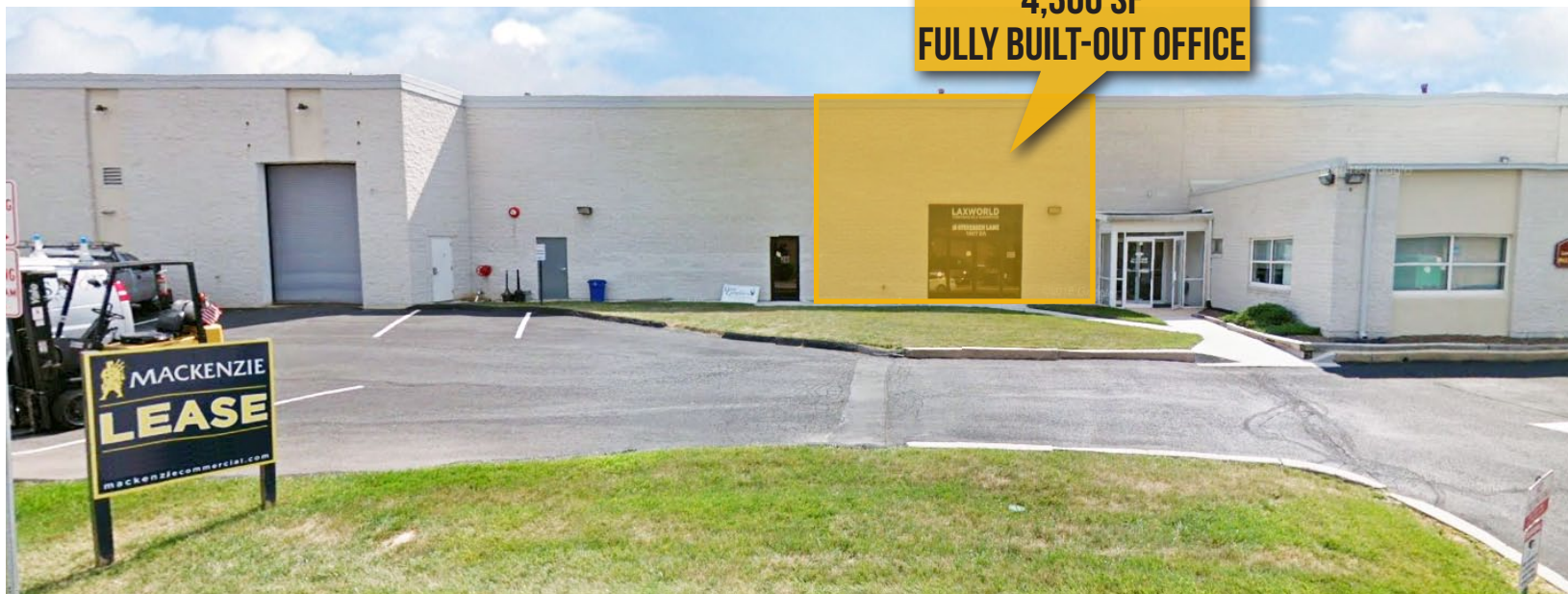
\$11.25/sf, MG

### HIGHLIGHTS

- ▶ Single-story affordable office space in the I-83 corridor
- ▶ Fully built-out office space with flexible term
- ▶ Central Cockeysville location
- ▶ Easy access via I-83, Warren Road exit



4,300 SF  
FULLY BUILT-OUT OFFICE



STREET VIEW



**Matt Mueller**

☎ 410.494.6658

✉ [mmueller@mackenziecommercial.com](mailto:mmueller@mackenziecommercial.com)

**Henson Ford**

☎ 410.494.6657

✉ [hford@mackenziecommercial.com](mailto:hford@mackenziecommercial.com)

**Bill Whitty**

☎ 410.494.4862

✉ [bwhitty@mackenziecommercial.com](mailto:bwhitty@mackenziecommercial.com)

**Joe Bradley**

☎ 410.494.4892

✉ [jbradley@mackenziecommercial.com](mailto:jbradley@mackenziecommercial.com)

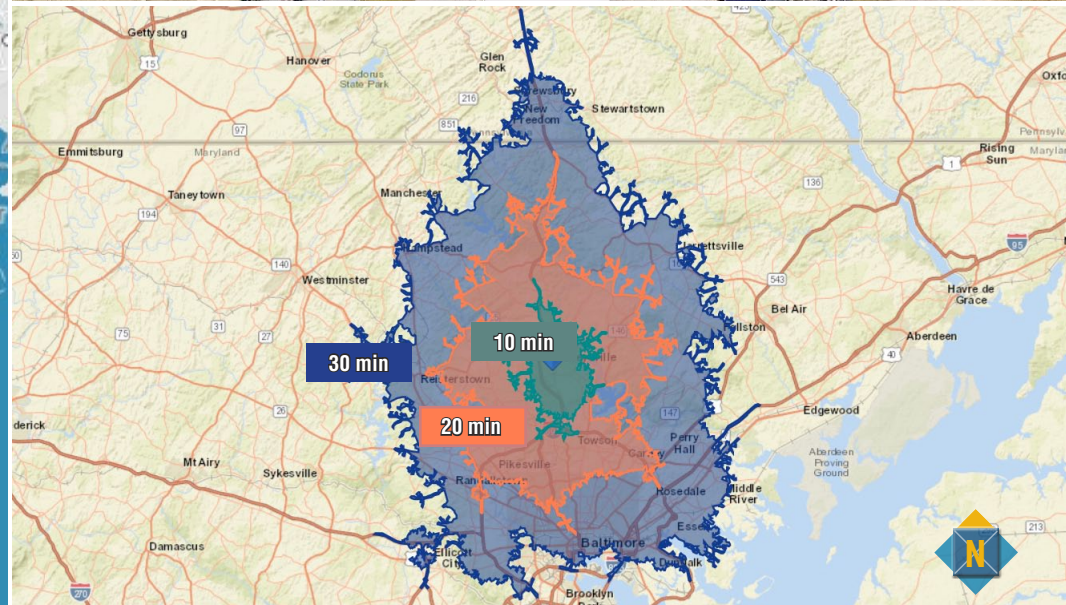
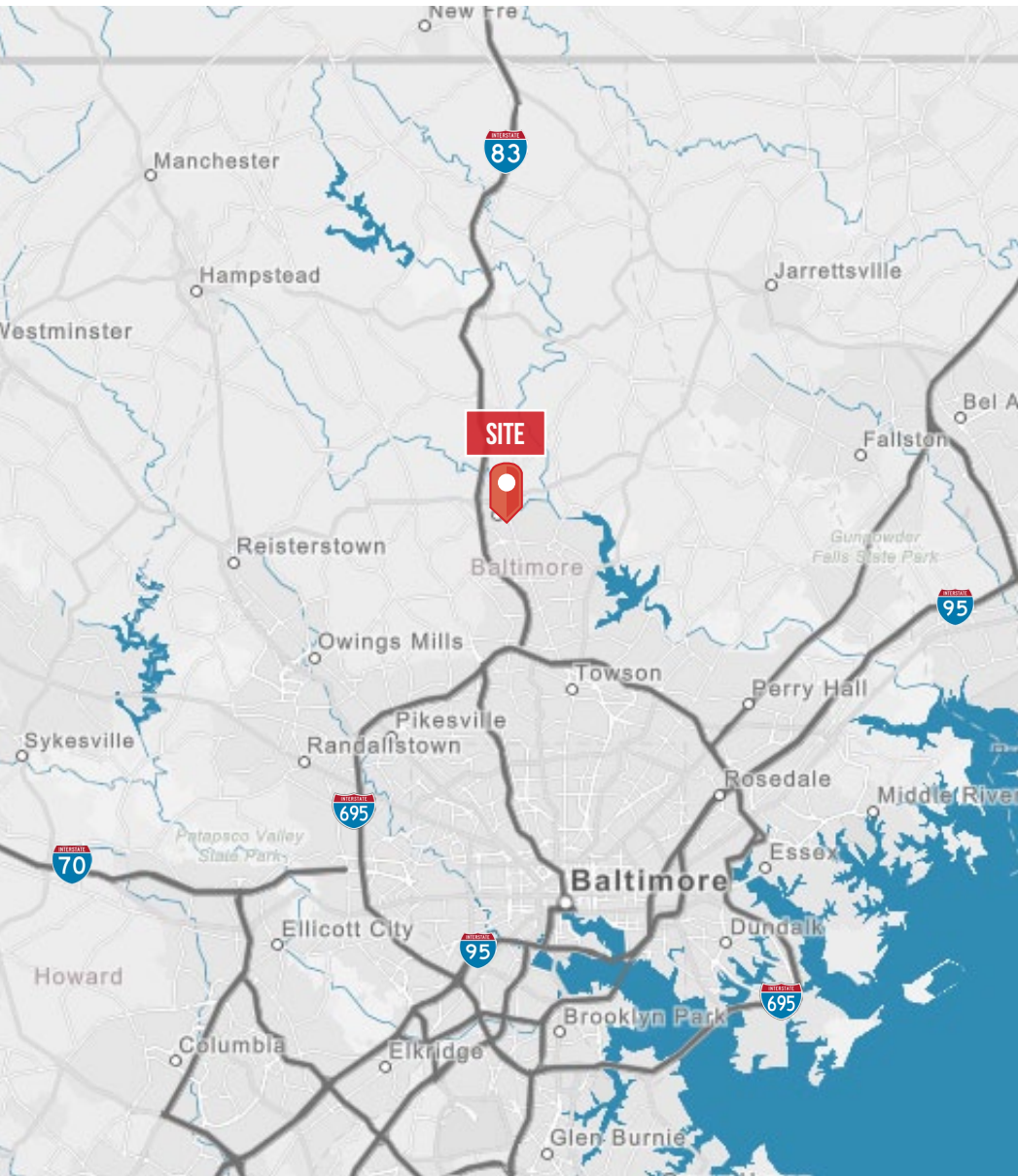
Mackenzie Commercial Real Estate Services, LLC • 410-821-8585 • 2328 W. Joppa Road, Suite 200 | Lutherville-Timonium, Maryland 21093 • [www.MACKENZIECOMMERCIAL.com](http://www.MACKENZIECOMMERCIAL.com)

# FOR LEASE

Baltimore County, MD

# LOCATION

16 - 20 STENERSEN LANE | COCKEYSVILLE, MARYLAND 21030

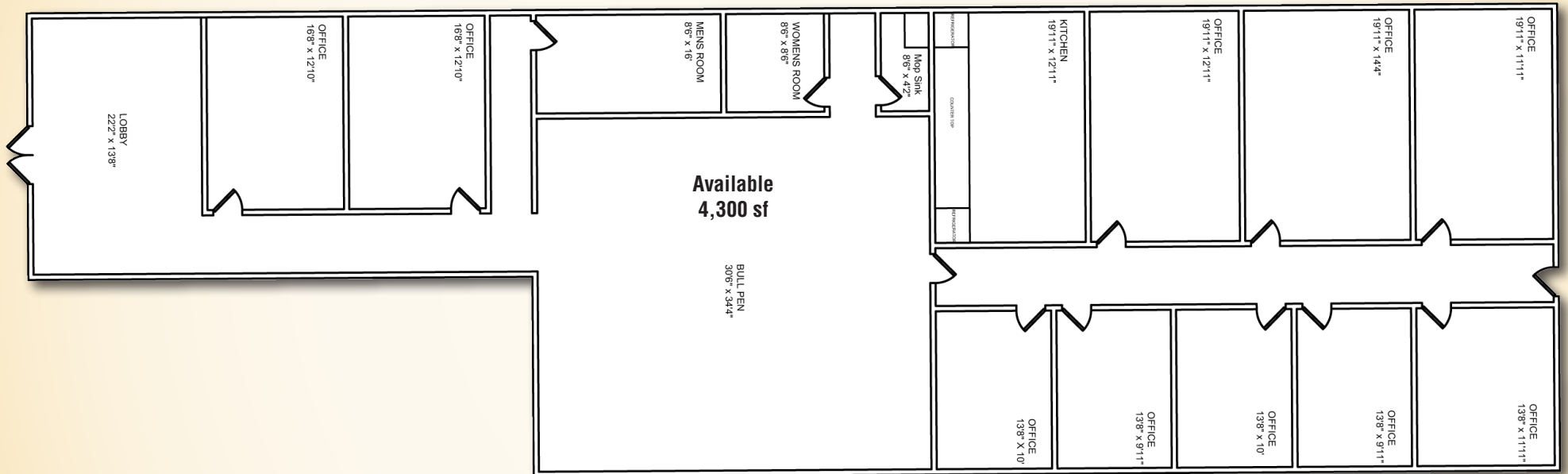


# FOR LEASE

Baltimore County, MD

# FLOOR PLAN

16 - 20 STENERSEN LANE | COCKEYSVILLE, MARYLAND 21030



**Matt Mueller**

410.494.6658

mmueller@mackenziecommercial.com

**Henson Ford**

410.494.6657

hford@mackenziecommercial.com

**Bill Whitty**

410.494.4862

bwhitty@mackenziecommercial.com

**Joe Bradley**

410.494.4892

jbradley@mackenziecommercial.com