

**± 2.5 ACRES OF LAND FOR SALE IN MEDICAL CORPORATE PARK  
S of SWC McMurray Blvd & Monument Plaza Cir  
Casa Grande, Arizona 85225**

**\$450,000**



**South of SWC McMurray Blvd & Monument Plaza Cir | Casa Grande, AZ**

- ±2.5 Acres - **\$450,000**
- Can be split into 1 acre for - **\$225,000** and/or 1.5 acres for - **\$300,000**
- APN: **505-62-001J**
- 02RL Zoning
- High Traffic Area
- Easy Access to I-10
- In Medical Park
- ~1/2 Mile to Banner Casa Grande Medical Center

The information contained herein has been obtained from various sources. We have no reason to doubt its accuracy; however, J & J Commercial Properties, Inc. has not verified such information and makes no guarantee, warranty or representation about such information. The prospective buyer or lessee should independently verify all dimensions, specifications, floor plans, and all information prior to the lease or purchase of the property. All offerings are subject to price change, prior sale, lease, or withdrawal from the market without prior notice.  
Effective: 03 03 20

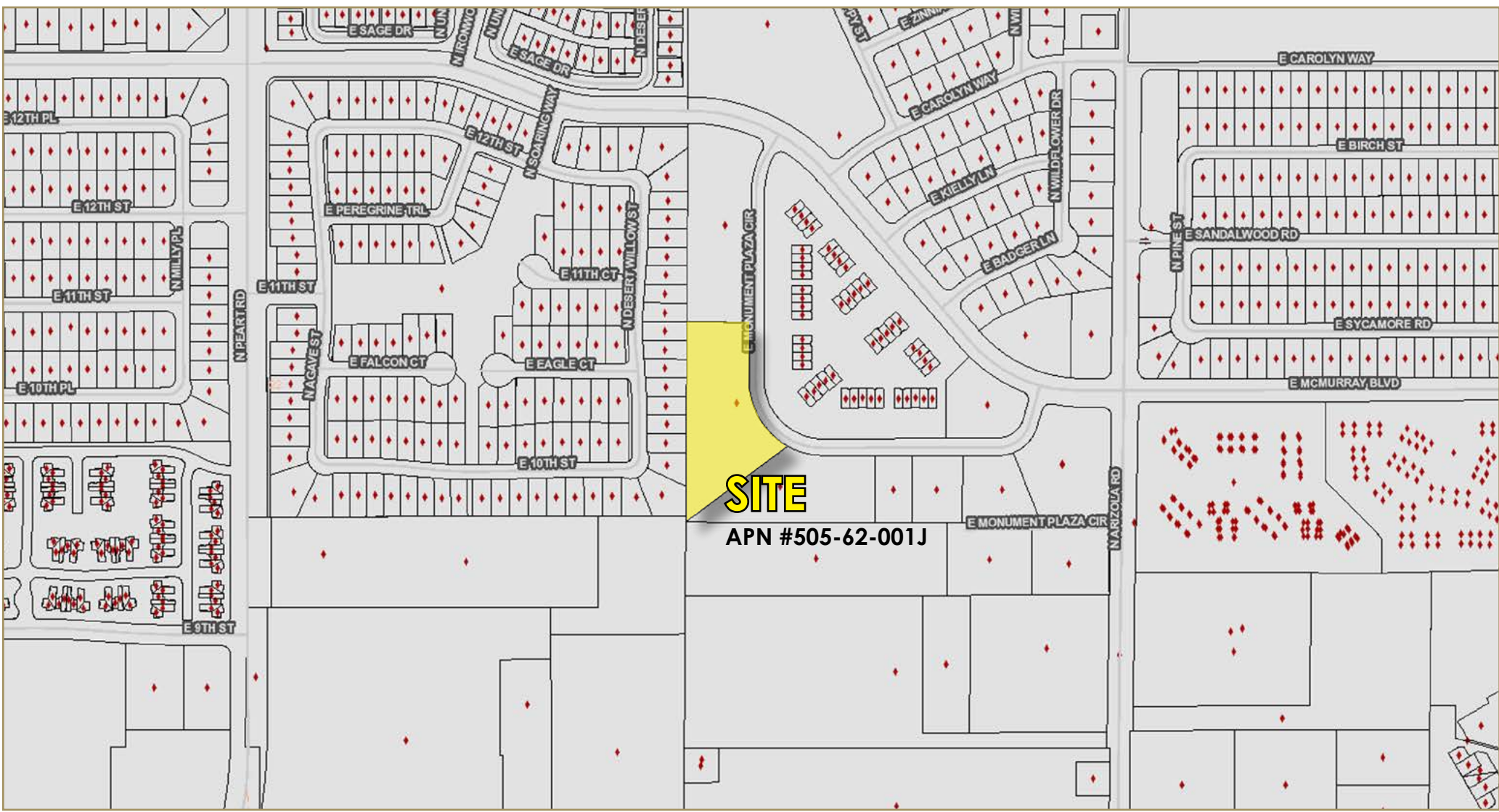
Tyson Breinholt  
D 480.966.7513  
M 602.315.7131  
tbreinholt@cpi.az.com

**COMMERCIAL PROPERTIES INC.**  
Locally Owned. Globally Connected. CFPAC International

TEMPE: 2323 W. University Drive, Tempe, AZ 85281 | 480.966.2301  
SCOTTSDALE: 8777 N. Gainey Center Dr., Suite 245, Scottsdale, AZ 85258 | www.cpi.az.com



# ± 2.5 ACRES OF LAND FOR SALE IN MEDICAL CORPORATE PARK S of SWC McMurray Blvd & Monument Plaza Cir Casa Grande, Arizona 85225



The information contained herein has been obtained from various sources. We have no reason to doubt its accuracy; however, J & J Commercial Properties, Inc. has not verified such information and makes no guarantee, warranty or representation about such information. The prospective buyer or lessee should independently verify all dimensions, specifications, floor plans, and all information prior to the lease or purchase of the property. All offerings are subject to price change, prior sale, lease, or withdrawal from the market without prior notice.  
Effective: 03 03 20

Tyson Breinholt  
D 480.966.7513  
M 602.315.7131  
tbreinholt@cpi.az.com

 **COMMERCIAL PROPERTIES INC.**  
Locally Owned. Globally Connected. CPI PAC International

TEMPE: 2323 W. University Drive, Tempe, AZ 85281 | 480.966.2301  
SCOTTSDALE: 8777 N. Gainey Center Dr., Suite 245, Scottsdale, AZ 85258 | www.cpi.az.com