

DELIVERING Q1 2020



NEW JERSEY TURNPIKE EXIT  
**SEAGIS POINT** 15E  
50 CENTRAL AVENUE, SOUTH KEARNY, NJ 07032

**415,533 SQ. FT. NEW CONSTRUCTION INDUSTRIAL SITE AVAILABLE FOR LEASE**

**WWW.SEAGISPOINT.COM**



**CBRE**

DELIVERING Q1 2020

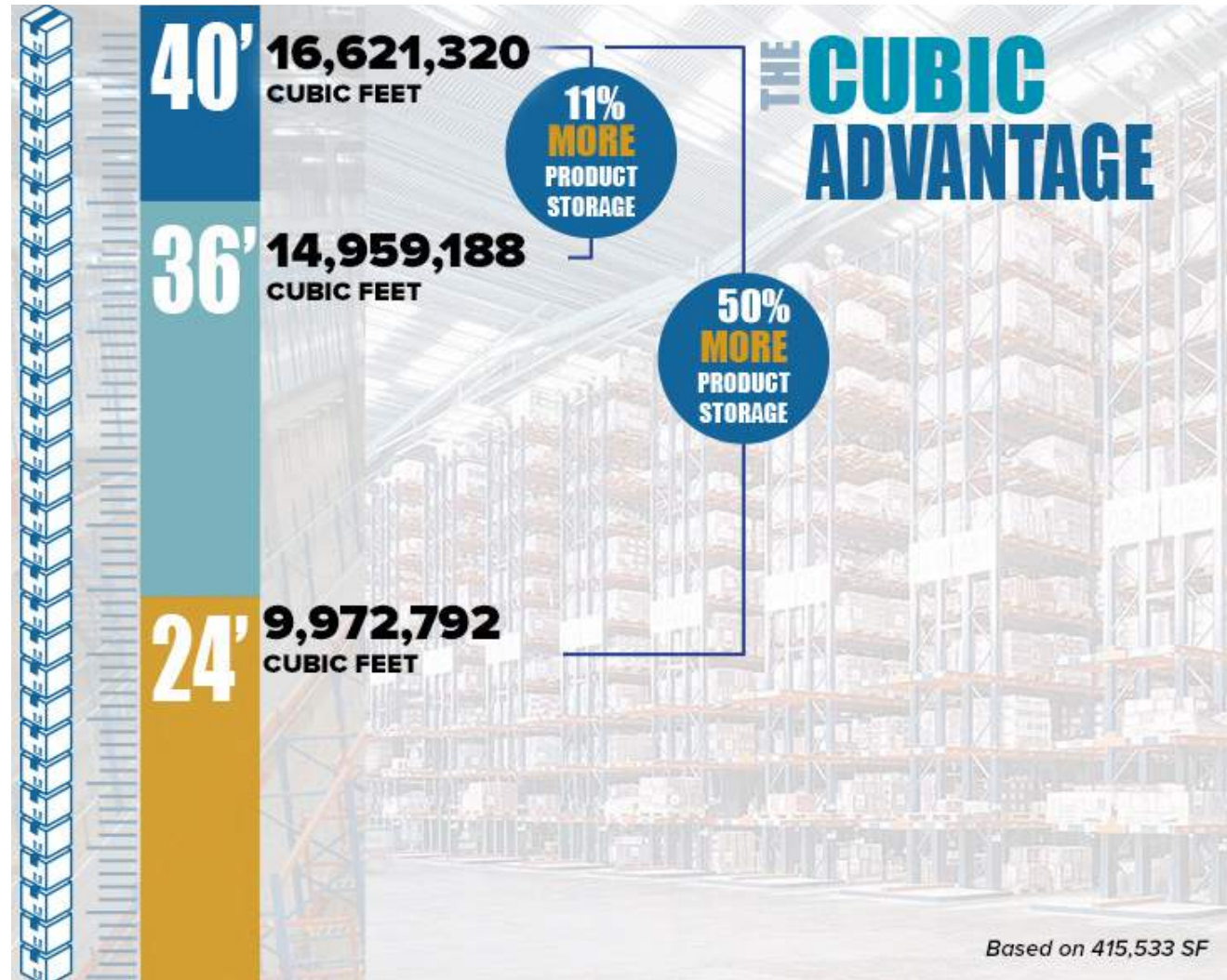
WWW.SEAGISPOINT.COM

NEW JERSEY TURNPIKE EXIT  
**SEAGIS POINT 15E**  
50 CENTRAL AVENUE, SOUTH KEARNY, NJ 07032

415,533 SQ. FT. NEW CONSTRUCTION INDUSTRIAL SITE

## Specifications

BUILDING SIZE:	415,533 SF on 26 acres
OFFICE SIZE:	To suit
CEILING HEIGHT:	40'
DIMENSIONS:	820' x 520'
COLUMN SPACING:	56' x 53' (60' at staging bay)
DOCK DOORS:	88 (9' x 10')
DRIVE-IN DOORS:	4 (12' x 14')
CAR PARKING:	261
TRAILER PARKING:	150
POWER:	4,000 AMPS, 280/277 volt, 3 phase
SPRINKLER:	ESFR
DELIVERY:	Q1 2020
COMMENTS:	Secured site



**FOR LEASE**



**CBRE**

DELIVERING Q1 2020

WWW.SEAGISPOINT.COM

NEW JERSEY TURNPIKE EXIT  
**SEAGIS POINT 15E**

50 CENTRAL AVENUE, SOUTH KEARNY, NJ 07032

415,533 SQ. FT. NEW CONSTRUCTION INDUSTRIAL SITE




DELIVERING Q1 2020

WWW.SEAGISPOINT.COM

# NEW JERSEY TURNPIKE EXIT SEAGIS POINT 15E

50 CENTRAL AVENUE, SOUTH KEARNY, NJ 07032

415,533 SQ. FT. NEW CONSTRUCTION INDUSTRIAL SITE

 **EXIT 15E**  
2.2 miles to Exit 15E of the New Jersey Turnpike

  
  
Located within minutes of Ports Newark / Elizabeth & Newark Liberty International Airport

  
Immediate access to New York City via the Holland Tunnel and Lincoln Tunnel



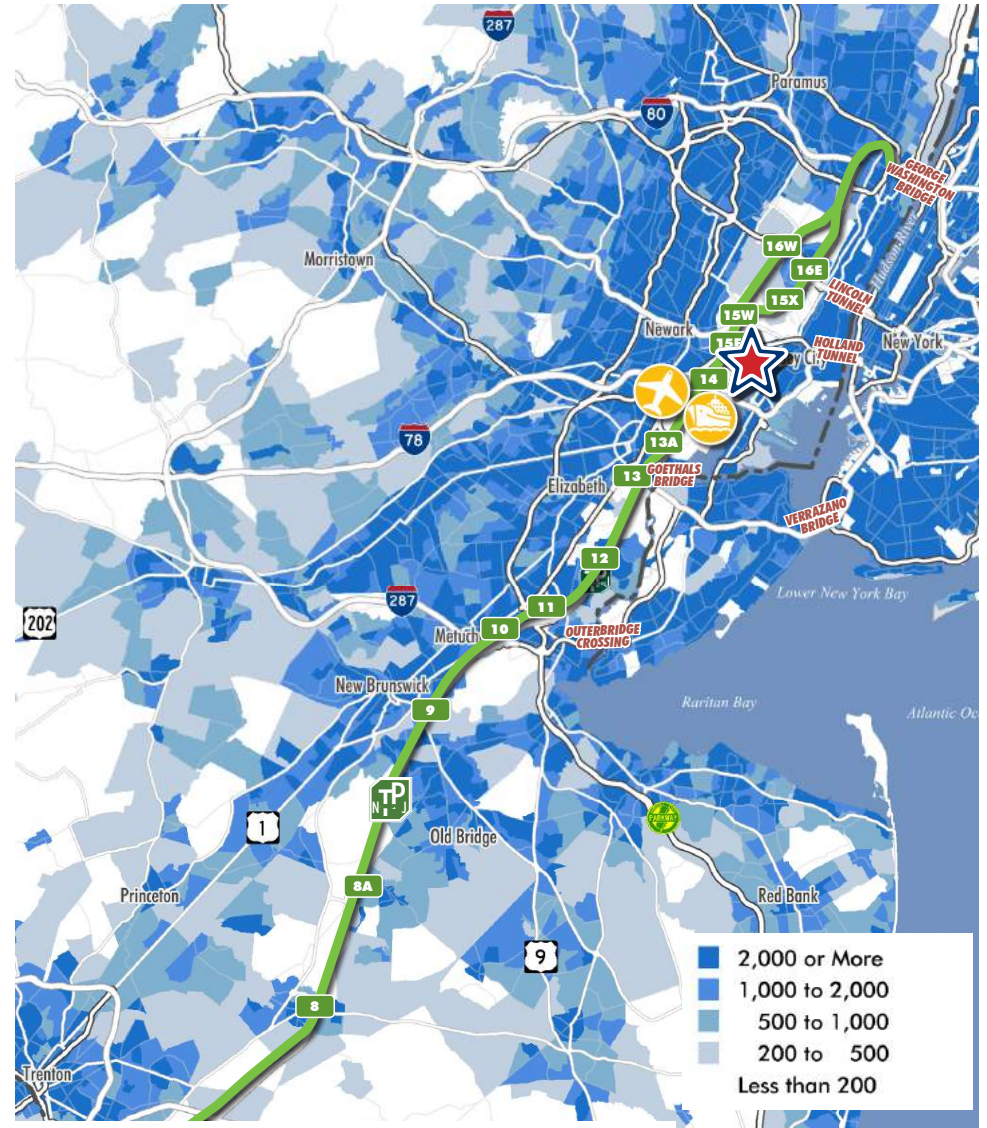
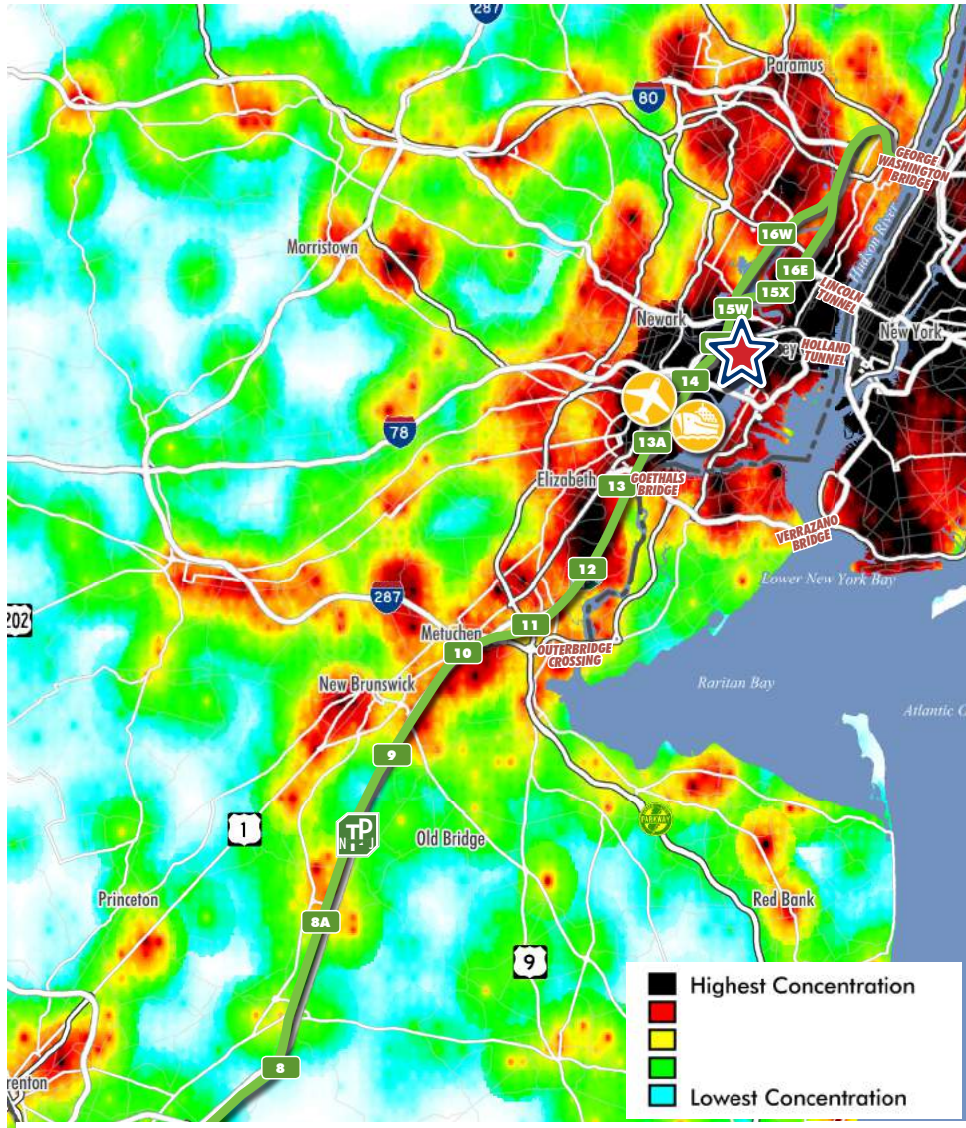
DELIVERING Q1 2020

WWW.SEAGISPOINT.COM

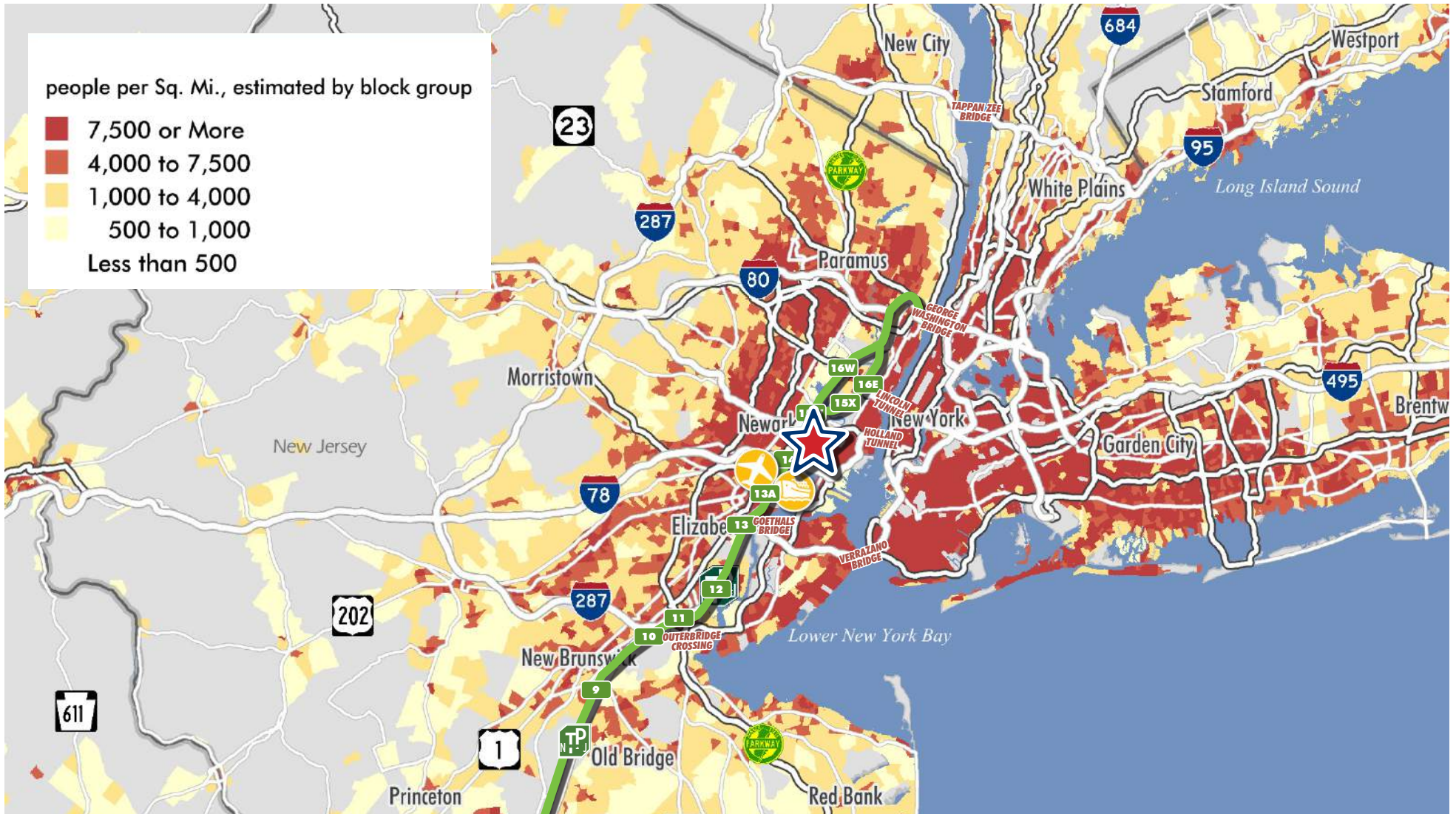
# NEW JERSEY TURNPIKE EXIT SEAGIS POINT 15E

50 CENTRAL AVENUE, SOUTH KEARNY, NJ 07032  
415,533 SQ. FT. NEW CONSTRUCTION INDUSTRIAL SITE

## Labor Map



## Population Density



DELIVERING Q1 2020



NEW JERSEY TURNPIKE EXIT  
**SEAGIS POINT 15E**  
50 CENTRAL AVENUE, SOUTH KEARNY, NJ 07032

415,533 SQ. FT. NEW CONSTRUCTION INDUSTRIAL SITE AVAILABLE FOR LEASE

[WWW.SEAGISPOINT.COM](http://WWW.SEAGISPOINT.COM)

## Exclusive Leasing Agents

**THOMAS F. MONAHAN, CCIM, SIOR**

Vice Chairman  
+1 201 712 5610  
thomas.monahan@cbre.com

**STEPHEN D'AMATO**

Senior Vice President  
+1 201 712 5616  
stephen.damato@cbre.com

**LARRY SCHIFFENHAUS**

First Vice President  
+1 201 712 5809  
larry.schiffenhaus@cbre.com

**ANASTASIA LAZARIDES**

Client Services Team Lead  
+1 201 712 5638  
anastasia.lazarides@cbre.com

**LAUREN GRIFFITH**

Client Services Coordinator  
+1 201 712 5667  
lauren.griffith@cbre.com

**GERARD MONAHAN**

Real Estate Analyst  
+1 201 712 5672  
gerard.monahan@cbre.com

CBRE | Licensed Real Estate Broker | 250 Pehle Avenue, Suite 600 | Saddle Brook, NJ 07663 | [www.cbre.com](http://www.cbre.com)

© 2019 CBRE, Inc. All rights reserved. This information has been obtained from sources believed reliable, but has not been verified for accuracy or completeness. You should conduct a careful, independent investigation of the property and verify all information. Any reliance on this information is solely at your own risk. CBRE and the CBRE logo are service marks of CBRE, Inc. All other marks displayed on this document are the property of their respective owners. Photos herein are the property of their respective owners. Use of these images without the express written consent of the owner is prohibited.

## Ownership

Seagis Property Group LP is a leading owner of industrial real estate in South Florida, New Jersey, and the New York Metropolitan area. Seagis owns approximately 10 million square feet of space with a particular focus on the Miami, Ft. Lauderdale, Central/Northern New Jersey, and JFK Airport markets.



**CBRE**