

FORMER K-2 FACILITY

19215 VASHON HIGHWAY SW
VASHON ISLAND, WA 98070



MULTI-USE COMPLEX FOR SALE

± 18 ACRE SITE



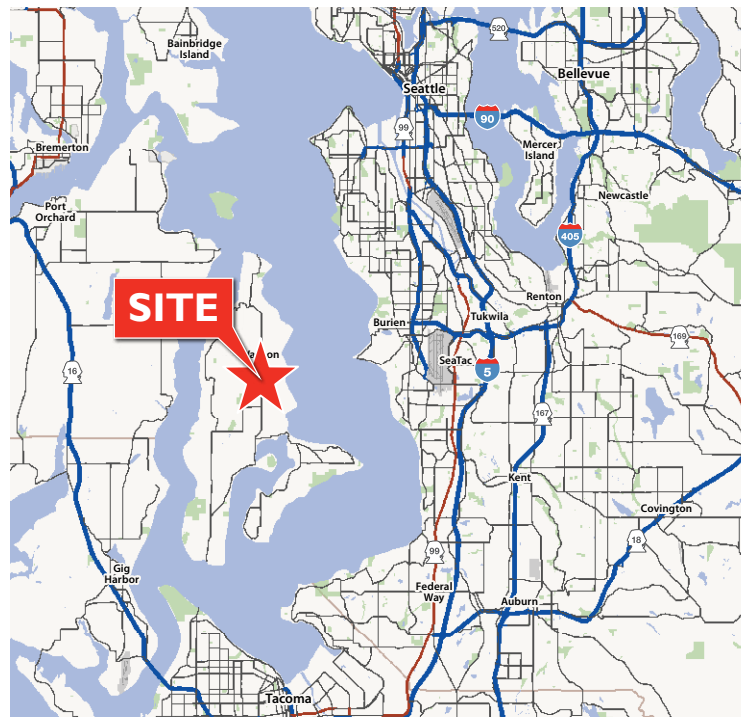
HIGHLIGHTS

- Ready to move in condition
- Redevelopment opportunity
- 1 mile from downtown Vashon, 5.5 miles from the Fauntleroy/Vashon/Southworth Ferry Terminal and 7.8 miles from the Point Defiance/Tahlequah Ferry Terminal
- Excellent visibility on Vashon Highway
- Site is divided into multiple sections with several possible uses

FOR SALE: \$1,500,000

SITE SPECS

TOTAL BUILDING AREA	± 175,000 sf total
OFFICE BUILDING AREA	± 25,000 sf
INDUSTRIAL BUILDING AREA	± 150,000 sf
SITE AREA	782,773 sf / 17.97 acres



For more information, please contact:

TONY KUSAK
Senior Director
(206) 521 0263
tony.kusak@comre.com

GARY DANKLEFSEN, CRE
Senior Director
(206) 521 0270
gary.danklefsen@comre.com

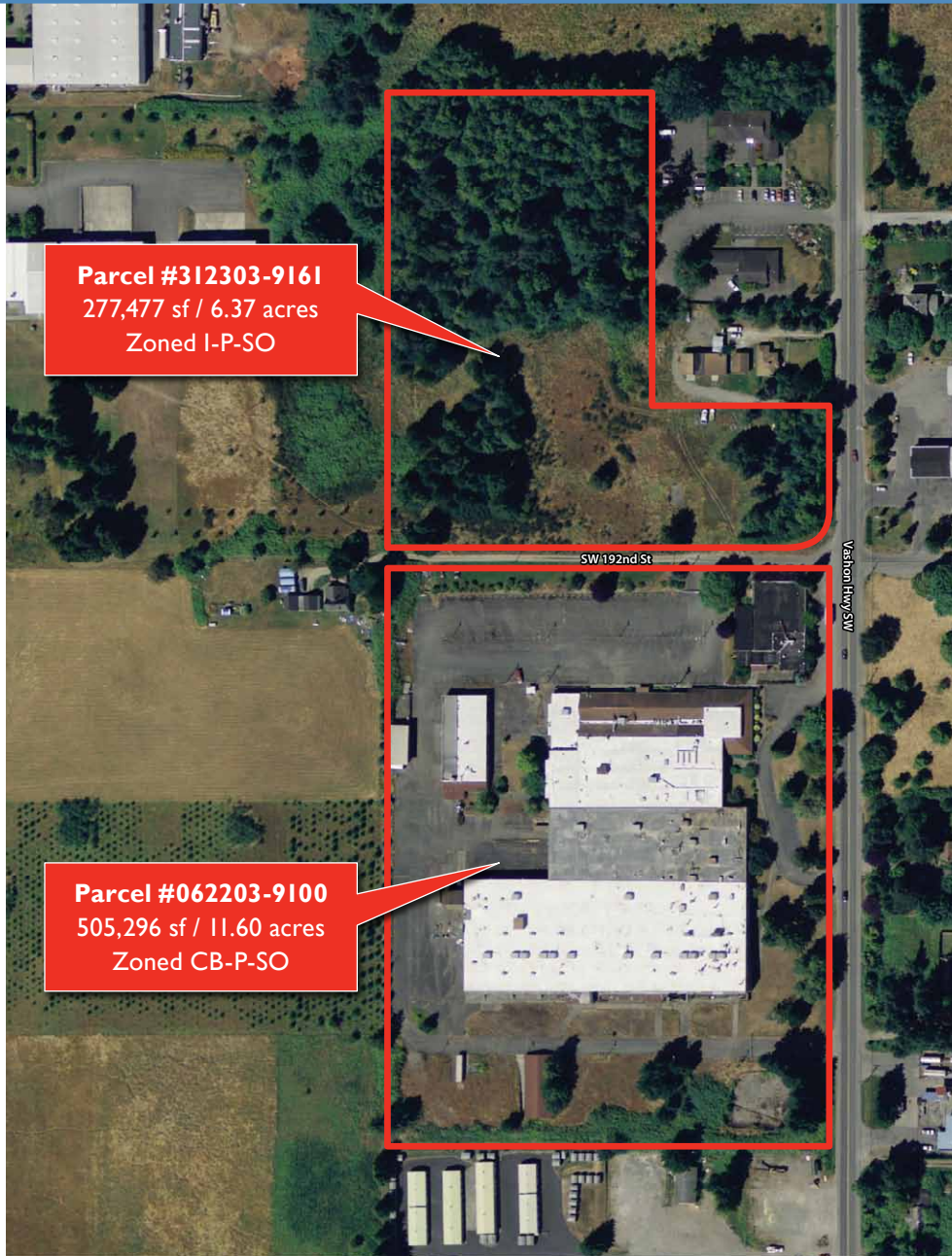
M. HARPUR DAVIDSON
Director
(206) 521 0273
harpur.davidson@comre.com

CUSHMAN & WAKEFIELD | COMMERCE
1420 Fifth Avenue, Suite 2600
Seattle, Washington 98101
(206) 682 0666
www.comre.com

FORMER K-2 CORPORATION FACILITY

19215 Vashon Highway SW, Vashon Island, WA 98070

± 18 ACRE SITE
FOR SALE



Parcel #312303-9161
277,477 sf / 6.37 acres
Zoned I-P-SO

Parcel #062203-9100
505,296 sf / 11.60 acres
Zoned CB-P-SO



DEMOGRAPHICS	3 MILES	5 MILES	15 MIN. DRIVE
2012 EST. POPULATION	5,866	14,541	9,858
2012 EST. DAYTIME POPULATION	2,156	3,053	2,773
NO. OF HOUSEHOLDS	2,515	6,143	4,237
AVG. HOUSEHOLD INCOME	\$95,575	\$99,126	98,523

For more information, please contact:

TONY KUSAK
Senior Director
(206) 521 0263
tony.kusak@comre.com

GARY DANKLEFSEN, CRE
Senior Director
(206) 521 0270
gary.danklefsen@comre.com

M. HARPUR DAVIDSON
Director
(206) 521 0273
harpur.davidson@comre.com

CUSHMAN & WAKEFIELD | COMMERCE
1420 Fifth Avenue, Suite 2600
Seattle, Washington 98101
(206) 682 0666
www.comre.com