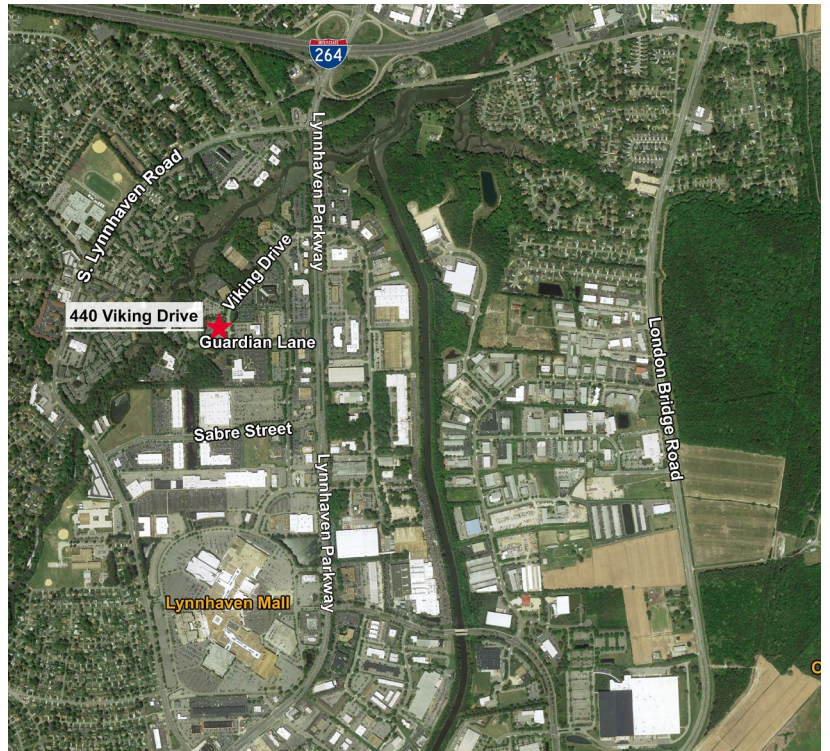




### Property Features

- Two-story, professional office space in the heart of Lynnhaven submarket
- Attractive ±20,341 SF multi-tenant office building with common area renovations underway
- Easy access to I-264
- Close proximity to numerous amenities including best in class retail, restaurants, hotels and entertainment
- Availability:
  - Suite 100 – 1,998 RSF
  - Suite 110 – 780 RSF



For more information, contact:

**JOSH FULTON**

Associate  
757 213 4162  
josh.fulton@thalhimer.com

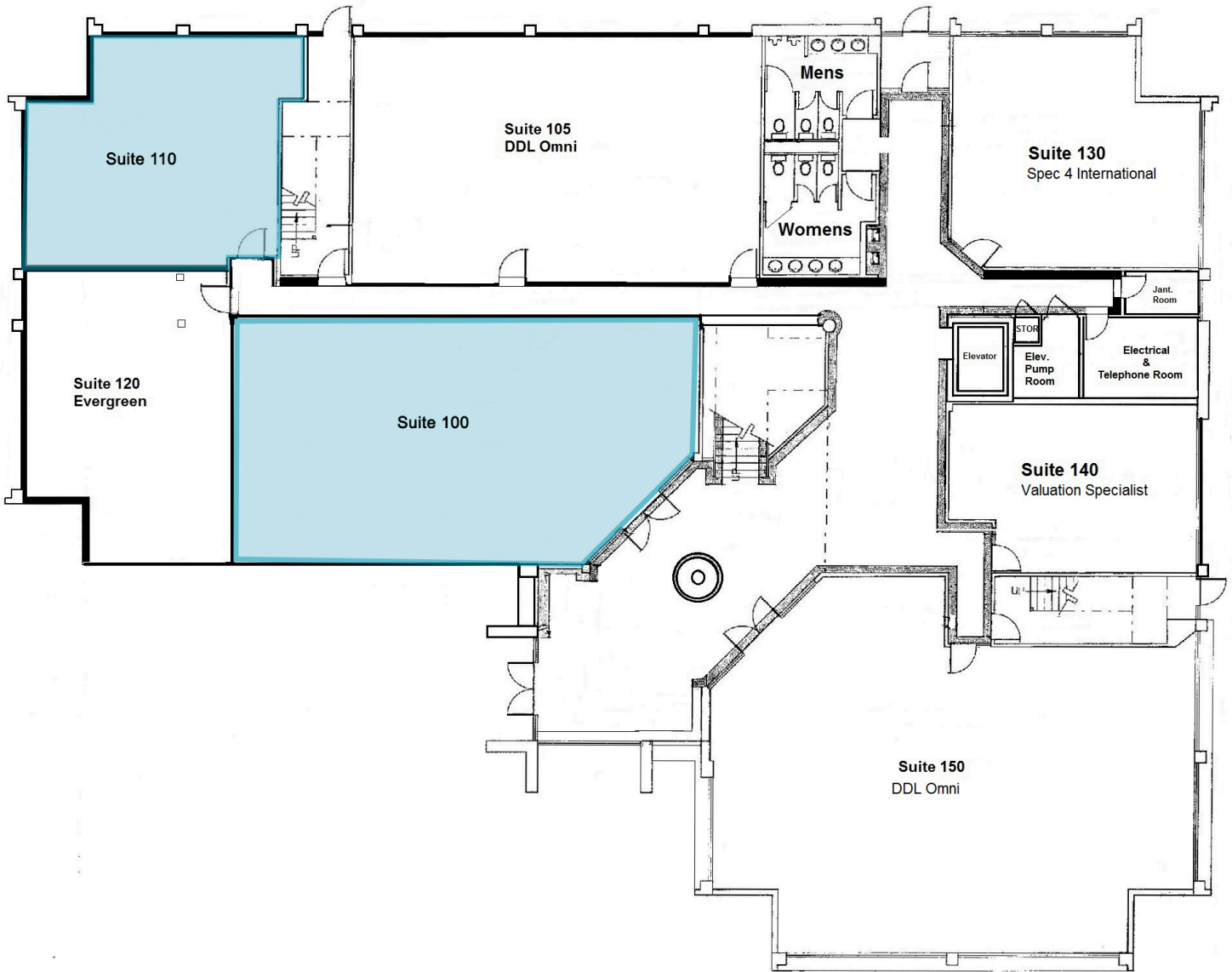
**ROB WRIGHT**

Senior Vice President  
757 499 2896  
rob.wright@thalhimer.com

The Town Center of Virginia Beach  
222 Central Park Ave., Suite 1500  
Virginia Beach, VA 23462  
www.thalhimer.com

**FIRST FLOOR**

Suite 100 – 1,998 RSF  
Suite 110 – 780 RSF



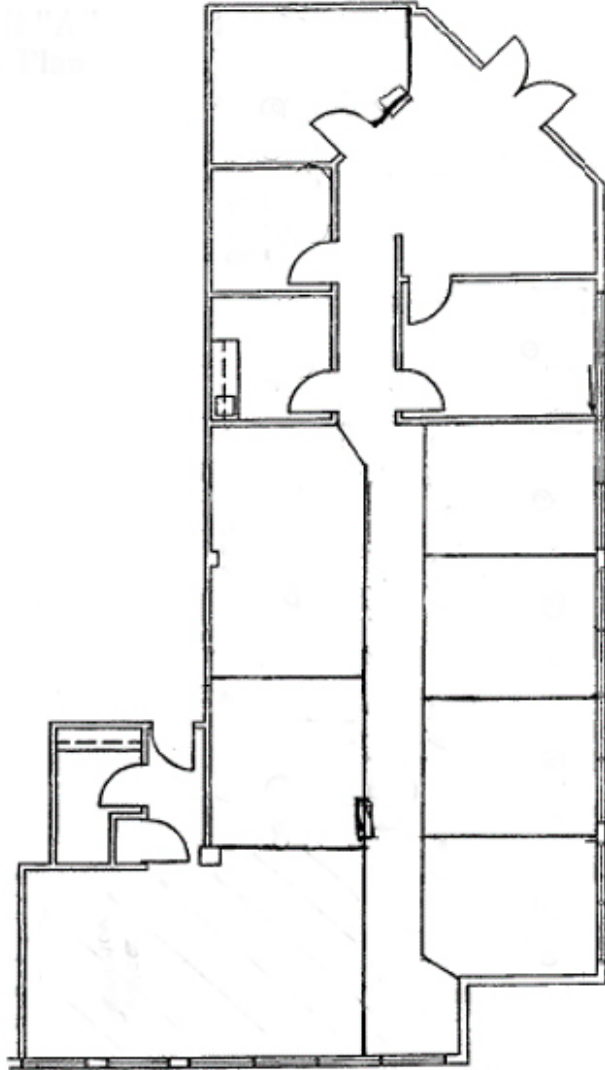
For more information, contact:

**JOSH FULTON**  
Associate  
757 213 4162  
josh.fulton@thalhimer.com

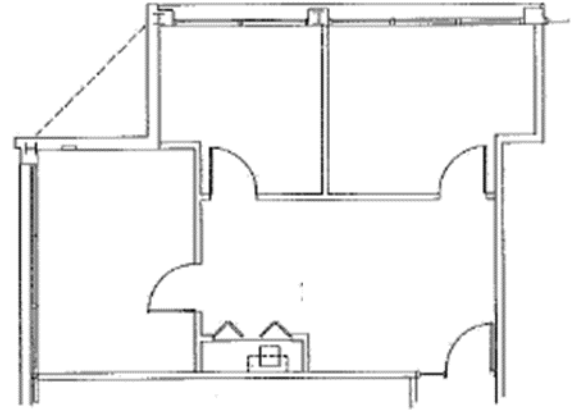
**ROB WRIGHT**  
Senior Vice President  
757 499 2896  
rob.wright@thalhimer.com

The Town Center of Virginia Beach  
222 Central Park Ave., Suite 1500  
Virginia Beach, VA 23462  
www.thalhimer.com

**FIRST FLOOR**  
Suite 100 – 1,998 RSF



**FIRST FLOOR**  
Suite 110 – 780 RSF



For more information, contact:

**JOSH FULTON**  
Associate  
757 213 4162  
[josh.fulton@thalhimer.com](mailto:josh.fulton@thalhimer.com)

**ROB WRIGHT**  
Senior Vice President  
757 499 2896  
[rob.wright@thalhimer.com](mailto:rob.wright@thalhimer.com)

The Town Center of Virginia Beach  
222 Central Park Ave., Suite 1500  
Virginia Beach, VA 23462  
[www.thalhimer.com](http://www.thalhimer.com)