



THE PLAZA AT GALE RANCH

BOLLINGER CANYON ROAD
AT DOUGHERTY ROAD
SAN RAMON,
CALIFORNIA



Restaurant Space Available For Lease



PROPERTY INFORMATION:

- Community Shopping Center Anchored By Safeway
- 3,578± SF Former Restaurant Space, \$3.50 PSF, Plus NNN (\$0.94)
- 1,436± SF First Flr. Office Space, \$3.00 PSF, Plus NNN
- Co-Tenants Include Peet's Coffee, Wells Fargo Bank, Ascona Pizza, Union Bank, San Ramon Medical Group, Fantastic Sams & Subway
- Surrounded By The Growing Communities Of Gale Ranch
- Close Proximity To Bishop Ranch and Blackhawk

ESTIMATED DEMOGRAPHICS:

	<u>1 MILE</u>	<u>3 MILES</u>	<u>5 MILES</u>
POPULATION:	12,350	89,441	164,590
AVG. HH INCOME:	\$145,961	\$172,073	\$166,662

FOR MORE INFORMATION CONTACT:

MEACHAM/OPPENHEIMER, INC.
CORFAC INTERNATIONAL
8 No. San Pedro St., Suite 300
San Jose, California 95110
Tel: 408.378.5900
Fax: 408.378.5903
www.moinc.net

Ryan Warner

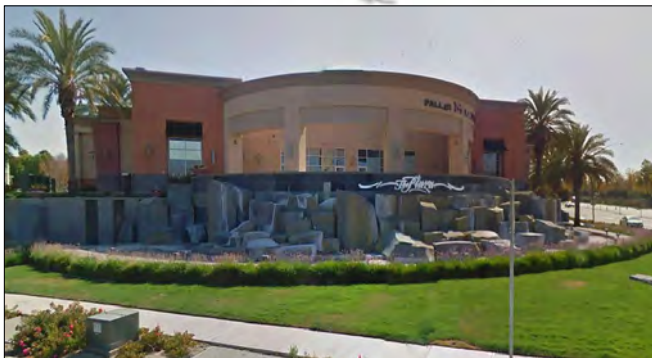
Lic. #01397580

rwarn@moinc.net

(408) 477-2505 Direct

(408) 378-5900

THE PLAZA AT GALE RANCH—SAN RAMON, CALIFORNIA



MEACHAM/OPPENHEIMER, INC.
CORFAC INTERNATIONAL
8 No. San Pedro St., Suite 300
San Jose, California 95110
Tel: 408.378.5900
www.moinc.net

Ryan Warner
Lic. #01397580
rwarn@moinc.net
(408) 477-2505
(408) 378-5900

THE PLAZA AT GALE RANCH—SAN RAMON, CALIFORNIA



MEACHAM/OPPENHEIMER, INC.
CORFAC INTERNATIONAL
8 No. San Pedro St., Suite 300
San Jose, California 95110
Tel: 408.378.5900
www.moinc.net

Ryan Warner
Lic. #01397580
rwarn@moinc.net
(408) 477-2505
(408) 378-5900

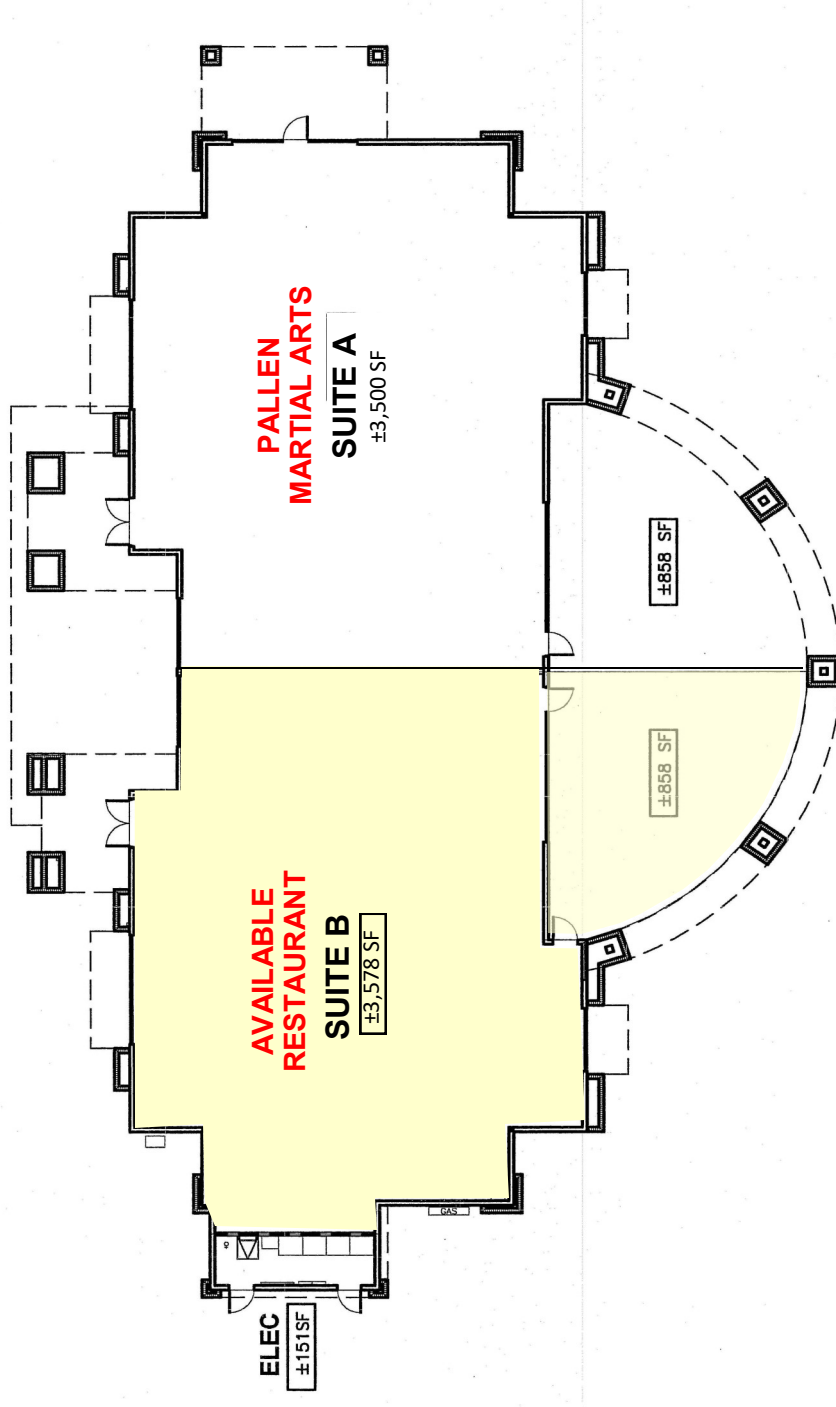
THE PLAZA AT GALE RANCH—SAN RAMON, CALIFORNIA



MEACHAM/OPPENHEIMER, INC.
CORFAC INTERNATIONAL
8 No. San Pedro St., Suite 300
San Jose, California 95110
Tel: 408.378.5900
www.moinc.net

Ryan Warner
Lic. #01397580
rwarner@moinc.net
(408) 477-2505
(408) 378-5900

THE PLAZA AT GALE RANCH—SAN RAMON, CALIFORNIA



11010 RETAIL
± 7,078 SF

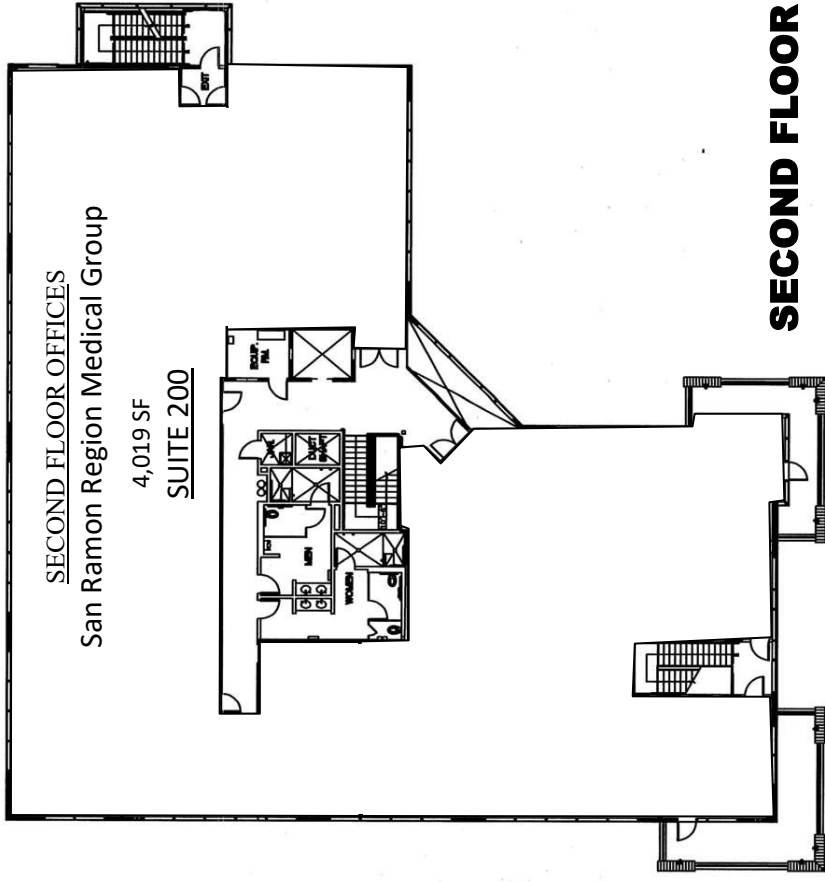
MEACHAM/OPPENHEIMER, INC.
CORFAC INTERNATIONAL
8 No. San Pedro St., Suite 300
San Jose, California 95110
Tel: 408.378.5900
www.moinc.net

Ryan Warner
Lic. #01397580
rwarn@moinc.net
(408) 477-2505
(408) 378-5900

THE PLAZA AT GALE RANCH—SAN RAMON, CALIFORNIA



FIRST FLOOR



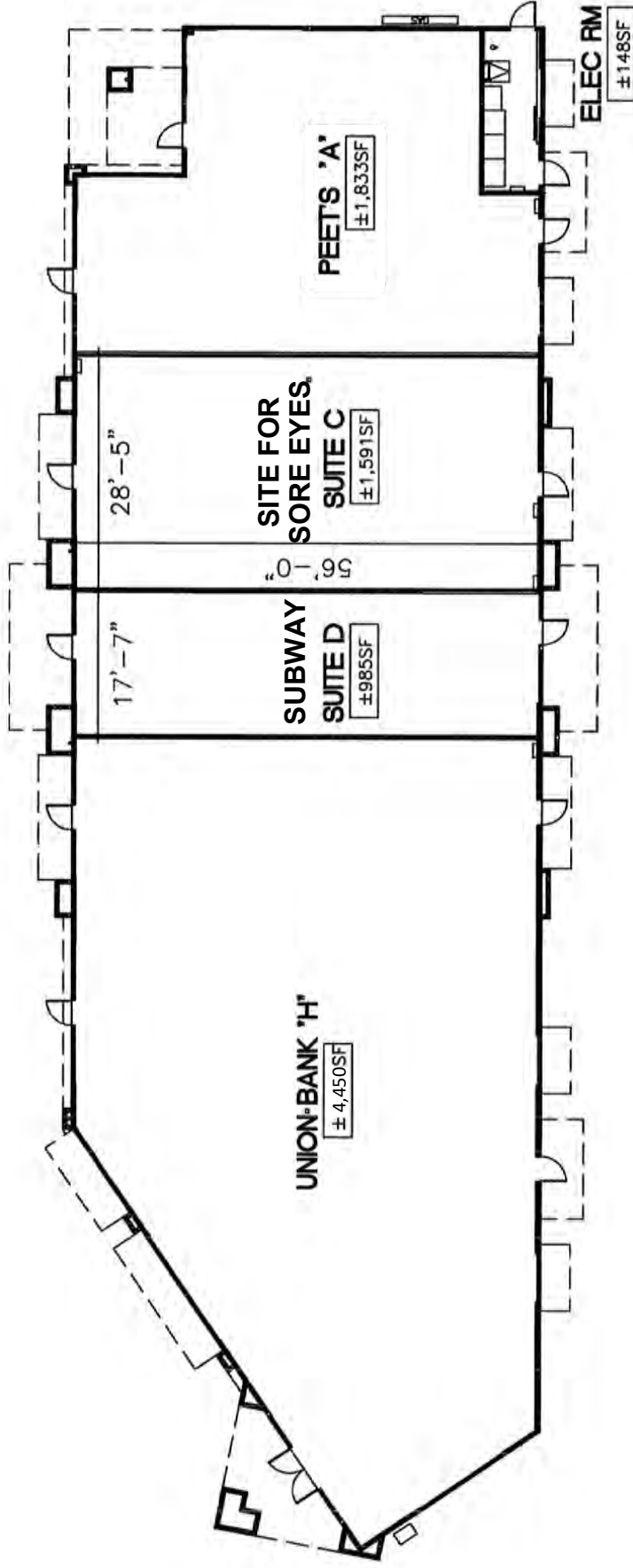
SECOND FLOOR

11030 OFFICE BUILDING
± 23,383 SF

MEACHAM/OPPENHEIMER, INC.
CORFAC INTERNATIONAL
8 No. San Pedro St., Suite 300
San Jose, California 95110
Tel: 408.378.5900
www.moinc.net

Ryan Warner
Lic. #01397580
rwarner@moinc.net
(408) 477-2505
(408) 378-5900

THE PLAZA AT GALE RANCH—SAN RAMON, CALIFORNIA

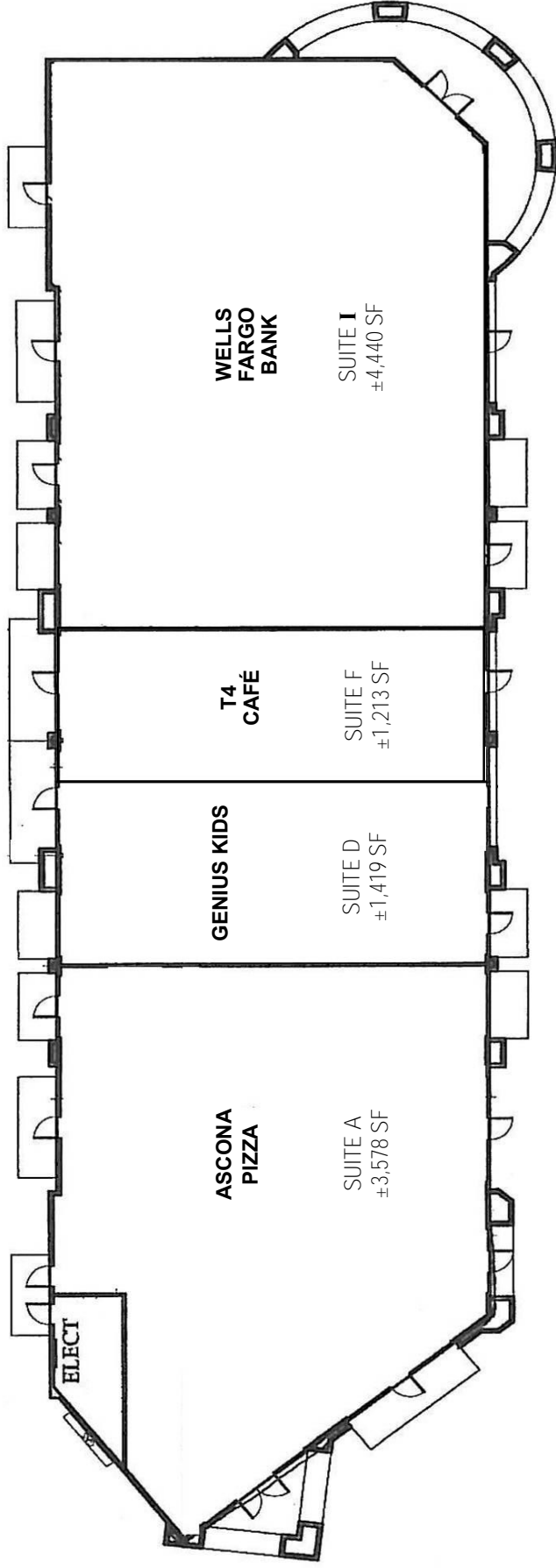


11000 RETAIL
± 8,864 SF

MEACHAM/OPPENHEIMER, INC.
CORFAC INTERNATIONAL
8 No. San Pedro St., Suite 300
San Jose, California 95110
Tel: 408.378.5900
www.moinc.net

Ryan Warner
Lic. #01397580
rwarn@moinc.net
(408) 477-2505
(408) 378-5900

THE PLAZA AT GALE RANCH—SAN RAMON, CALIFORNIA

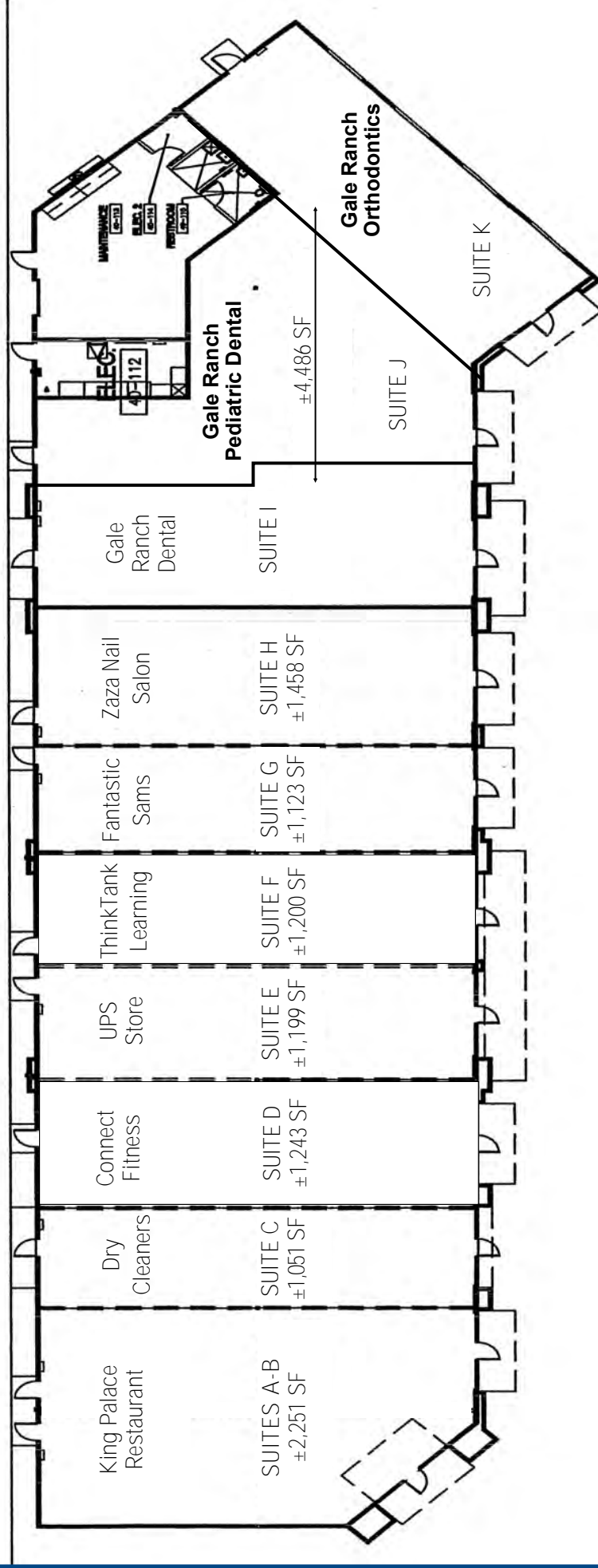


11020 RETAIL
± 10,834 SF

MEACHAM/OPPENHEIMER, INC.
CORFAC INTERNATIONAL
8 No. San Pedro St., Suite 300
San Jose, California 95110
Tel: 408.378.5900
www.moinc.net

Ryan Warner
Lic. #01397580
rwarners@moinc.net
(408) 477-2505
(408) 378-5900

THE PLAZA AT GALE RANCH—SAN RAMON, CALIFORNIA

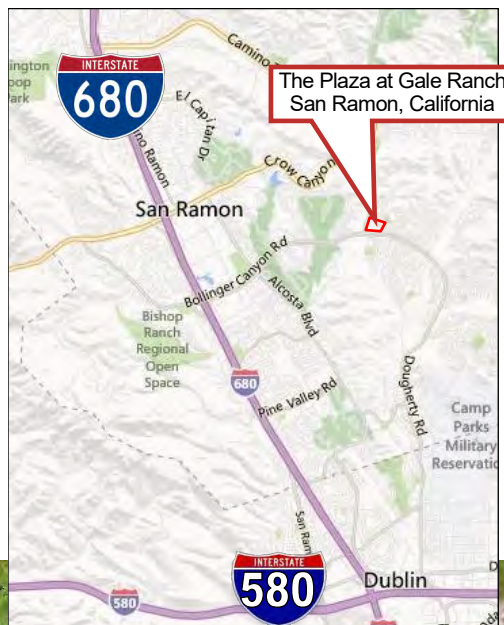


11040 RETAIL BUILDING ± 14,011 SF

MEACHAM/OPPENHEIMER, INC.
CORFAC INTERNATIONAL
 8 No. San Pedro St., Suite 300
 San Jose, California 95110
 Tel: 408.378.5900
www.moinc.net

Ryan Warner
 Lic. #01397580
rwarner@moinc.net
 (408) 477-2505
 (408) 378-5900

THE PLAZA AT GALE RANCH—SAN RAMON, CALIFORNIA



MEACHAM/OPPENHEIMER, INC.
CORFAC INTERNATIONAL
8 No. San Pedro St., Suite 300
San Jose, California 95110
Tel: 408.378.5900
www.moinc.net

Ryan Warner
Lic. #01397580
rwarn@moinc.net
(408) 477-2505
(408) 378-5900

THE PLAZA AT GALE RANCH—SAN RAMON, CALIFORNIA



MEACHAM/OPPENHEIMER, INC.
CORFAC INTERNATIONAL
 8 No. San Pedro St., Suite 300
 San Jose, California 95110
 Tel: 408.378.5900
 www.moinc.net

Ryan Warner
 Lic. #01397580
rwarn@moinc.net
(408) 477-2505
(408) 378-5900