



## BUILDING FEATURES

- ±294,323 SF
- 60' Speed Bays
- 52' x 54' Bays
- ESFR Sprinklers
- Foreign Trade Zone #84
- 32' Clear Height
- 185' Truck Courts
- Onsite Truck and Trailer Storage
- Abundant Parking (see site plan)
- 60 9' x 10' Overhead Doors
- 4 - 12' x 14' Ramp Doors
- **Lease Rate - Contact Broker**

## LOCATION

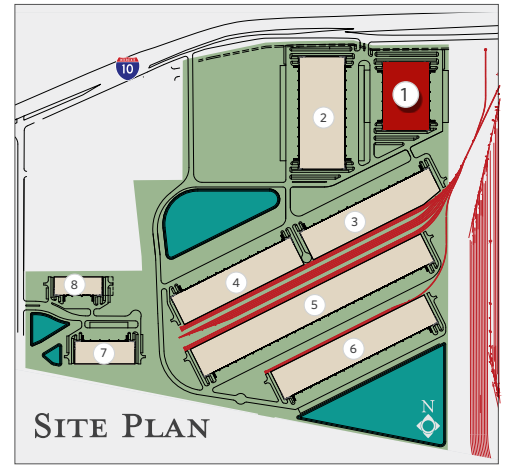


# PORT 10 LOGISTICS CENTER

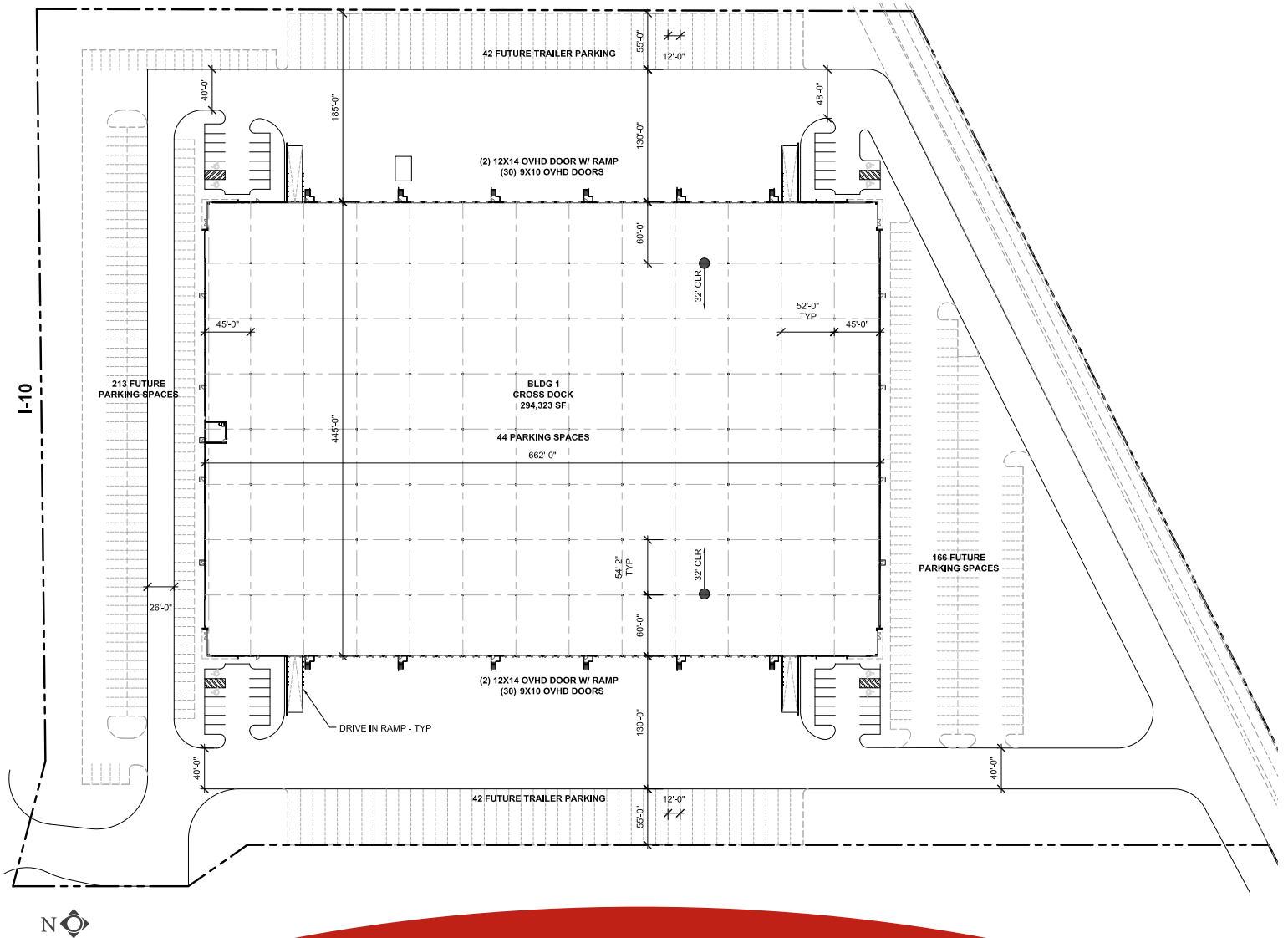
**BUILDING 1**  
SHELL COMPLETE



# PORT 10 LOGISTICS CENTER



## BUILDING 1



[www.Port10LogisticsCenter.com](http://www.Port10LogisticsCenter.com)



John M. Talhelm  
Senior Vice President  
+1 713 888 4058  
[john.talhelm@am.jll.com](mailto:john.talhelm@am.jll.com)

Kevin A. Erck, SIOR  
Vice President  
+1 713 888 4067  
[kevin.erck@am.jll.com](mailto:kevin.erck@am.jll.com)



The information contained herein is obtained from sources believed to be reliable; however, JLL makes no guarantees, warranties or representations as to the completeness or accuracy thereof. The presentation of this property is submitted subject to errors, omissions, change of price or conditions, and is subject to prior sale, lease or withdrawal without notice.