

1301 BOWEN

1301 S. Bowen Road, Arlington, Texas 76013

NOW LEASING



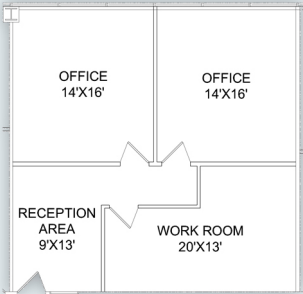
Building Highlights

- Located within ten minutes of I-30, I-20, 820 and Hwy 360
- Enhanced HVAC energy management system with direct digital controls
- Renovated lobbies and restrooms
- Four-story atrium
- Multiple 1,500 RSF floor plans for lease
- Abundant restaurant and retail options in the area
- 1st floor conference room facility

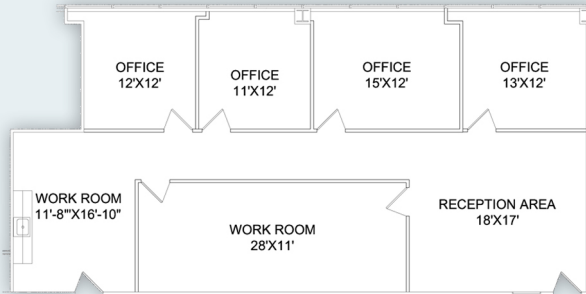


Contact Cole Moreano 214-995-1797
leasing@txreproperties.com





Suite 320 1,076 RSF



Suite 315 2,062 RSF



Cole Moreano 214-995-1797
cmoreano@txreproperties.com
Kolby Dickerson 214-534-1599
kdickerson@txreproperties.com
leasing@txreproperties.com
www.txreproperties.com

1301 S. Bowen Road, Arlington, TX 76013