

1833

South Coast Highway

available for lease

1,147 SQUARE FOOT RETAIL SPACE IN LAGUNA BEACH



Contact Exclusive Agents:

RYAN HARMAN
Senior Vice President
License ID# 01399616
(949) 790-3136
rharman@leeirvine.com

KEVIN BAYLESS
Vice President
License ID# 01788899
(949) 790-3142
kbayless@leeirvine.com

 **LEE &
ASSOCIATES**

COMMERCIAL REAL ESTATE SERVICES

COASTAL INVESTMENT GROUP

9838 Research Drive | Irvine, California 92618 | www.lee-associates.com

1833

South Coast Highway



For More Information, Please Contact:

RYAN HARMAN
 Senior Vice President
 License ID# 01399616
 (949) 790-3136
 rharman@leeirvine.com

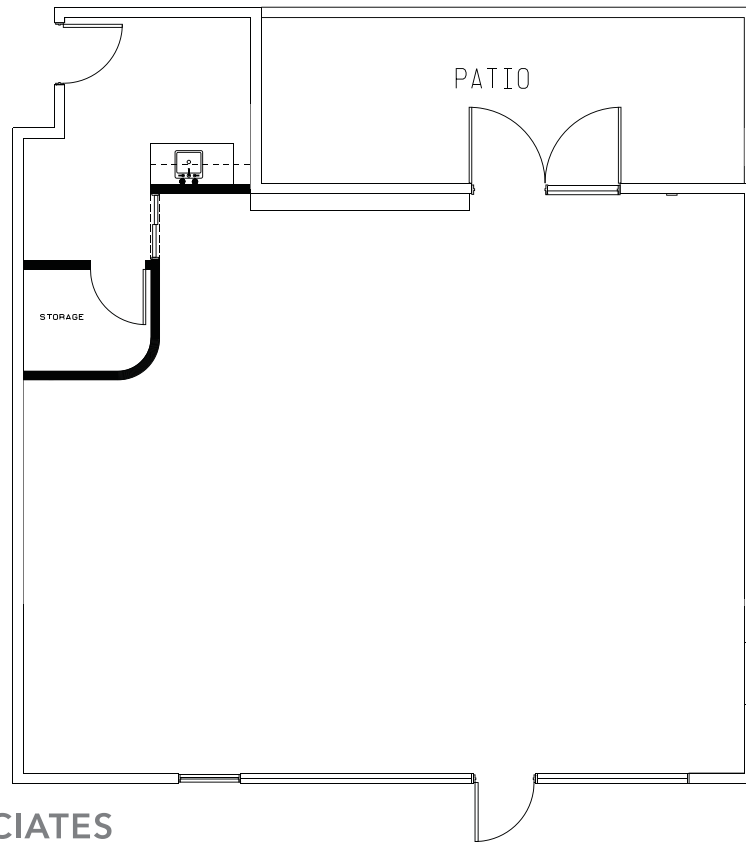
KEVIN BAYLESS
 Vice President
 License ID# 01788899
 (949) 790-3142
 kbayless@leeirvine.com

available for lease

1,147 SQUARE FOOT RETAIL SPACE IN LAGUNA BEACH

Property Features:

- 1,147 SF, modern architecture design
- PCH frontage / street level
- Open floor plan
- High-end improvements
- Currently a fitness studio
- Affluent local demographic
- Reserved parking
- Heavy walking traffic
- Elevator-served



LEE & ASSOCIATES
 COMMERCIAL REAL ESTATE SERVICES
 COASTAL INVESTMENT GROUP

No warranty or representation is made to the accuracy of the foregoing information. Terms of sale or lease and availability are subject to change or withdrawal without notice.