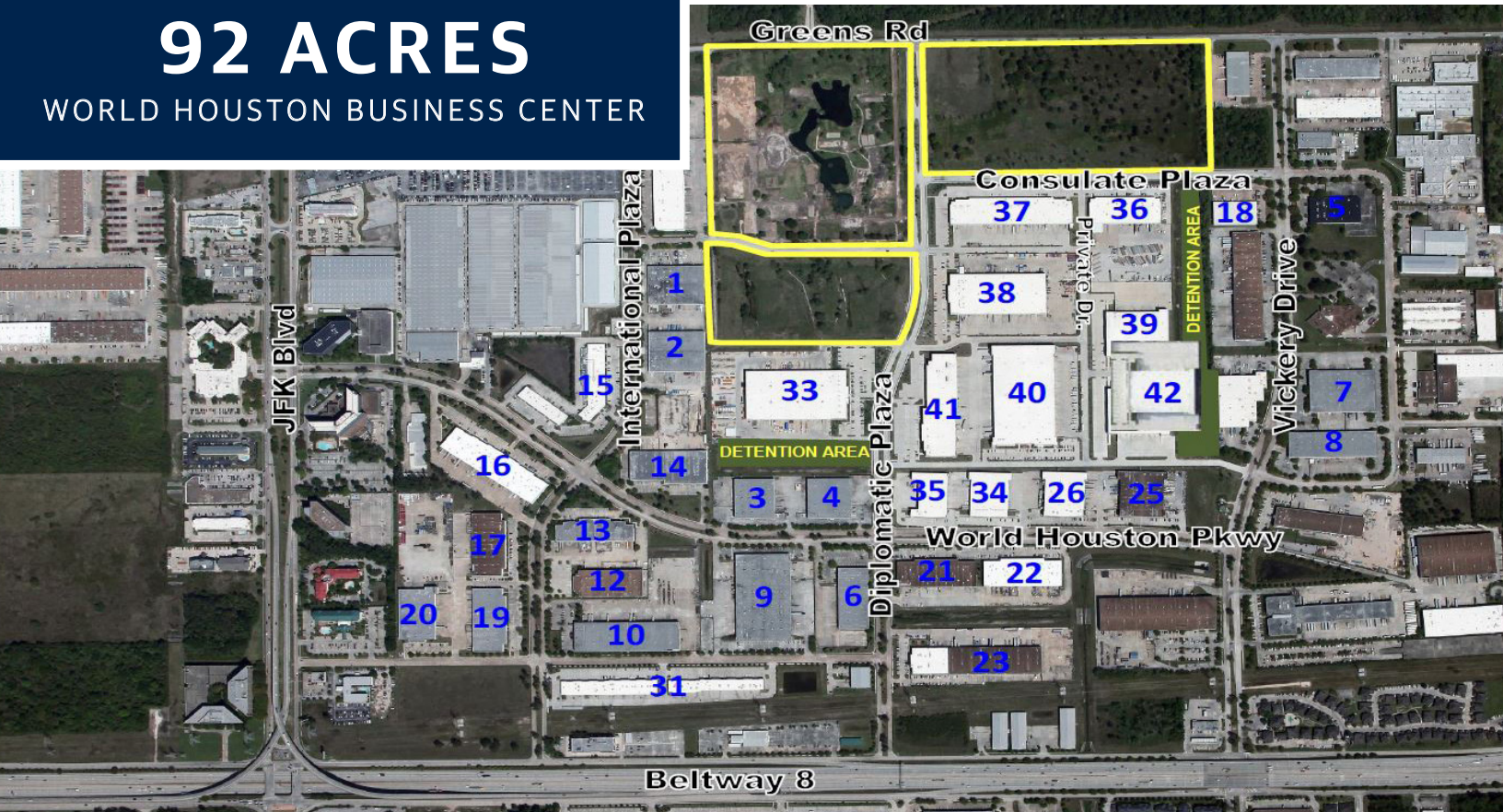


# BUILD TO SUIT

WWW.INSITEREALTY.COM

## 92 ACRES

WORLD HOUSTON BUSINESS CENTER



## PROPERTY FEATURES

- UP TO 550,000 SF IN A SINGLE BUILDING
- SITES ARE READY FOR DEVELOPMENT
- DEVELOPER: EASTGROUP PROPERTIES (NYSE: EGP)
- HOUSTON'S PREMIER INDUSTRIAL DEVELOPMENT
- PHENOMENAL ACCESS TO BELTWAY 8 AND BUSH IAH
- CONVENIENT ACCESS TO I-45, HWY 59 (I-69) AND HARDY TOLL ROAD
- MASTER PLANNED, DEED RESTRICTED, AND ARCHITECTURALLY CONTROLLED PARK
- FOUR TO SIX LAND BOULEVARDS WITH LANDSCAPED MEDIANS
- 42 BUILDINGS TOTALING OVER 3.5 MILLION SF



FOR MORE INFORMATION PLEASE CONTACT

RIVES NOLEN • [RNOLEN@INSITEREALTY.COM](mailto:RNOLEN@INSITEREALTY.COM) • 713.339.5316

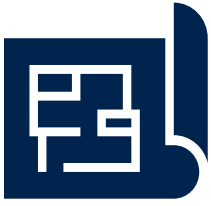
LOGAN GREER • [LGREER@INSITEREALTY.COM](mailto:LGREER@INSITEREALTY.COM) • 713.339.5363

DAYNE WUNDERLICH • [DWUNDERLICH@INSITEREALTY.COM](mailto:DWUNDERLICH@INSITEREALTY.COM) • 713.339.5329



A PROJECT OF  
**EASTGROUP**  
PROPERTIES

The information contained herein was obtained from sources believed reliable; however, InSite Realty Partners, L.P. makes no guarantees, warranties or representations as to the completeness or accuracy thereof. The presentation of this property is submitted subject to errors, omissions, change of price or conditions, prior sale or lease, or withdrawal without written notice.



# 92 ACRES IN WORLD HOUSTON

## BUILD TO SUITS UP TO 550,000 SF



**FOR MORE INFORMATION PLEASE CONTACT**

**RIVES NOLEN • [RNOLEN@INSITEREALTY.COM](mailto:RNOLEN@INSITEREALTY.COM) • 713.339.5316**

**LOGAN GREER • [LGREER@INSITEREALTY.COM](mailto:LGREER@INSITEREALTY.COM) • 713.339.5363**

**DAYNE WUNDERLICH • [DWUNDERLICH@INSITEREALTY.COM](mailto:DWUNDERLICH@INSITEREALTY.COM) • 713.339.5329**

The information contained herein was obtained from sources believed reliable; however, InSite Realty Partners, L.P. makes no guarantees, warranties or representations as to the completeness or accuracy thereof. The presentation of this property is submitted subject to errors, omissions, change of price or conditions, prior sale or lease, or withdrawal without written notice.

**INSITE**

A PROJECT OF  
**EASTGROUP**  
PROPERTIES