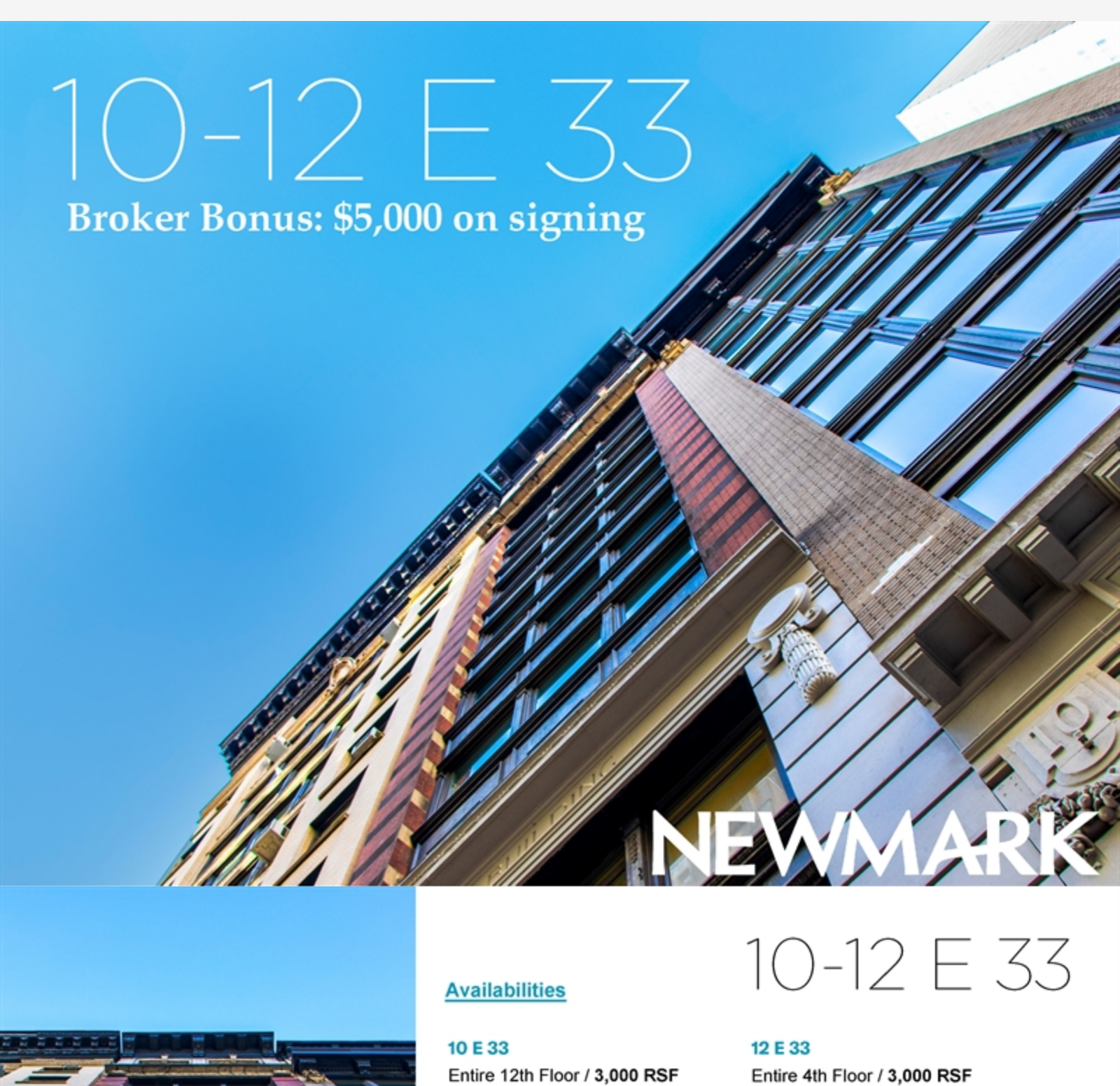


10-12 E 33

Broker Bonus: \$5,000 on signing



NEWMARK



10-12 E 33

Availabilities

10 E 33

Entire 12th Floor / 3,000 RSF

12 E 33

Entire 4th Floor / 3,000 RSF

Entire 8th Floor / 3,000 RSF

Entire 9th Floor / 3,000 RSF

TERMS

Negotiable

COMMENTS

- Single-tenant floors with direct elevator access
- Furnished plug & play loft space in iconic pre-war building
- Tenant-controlled self-contained HVAC system with Merv-13 HEPA filtration
- Hardwood floors, open ceilings, exposed brick
- Glass conference rooms and offices
- Open area for 15-20
- Brand new lobby with new elevators and original artwork
- Institutional ownership
- 100% commission paid on signing

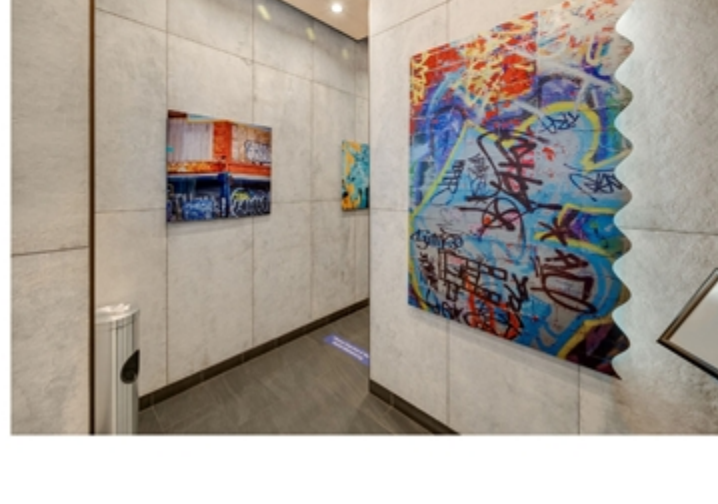
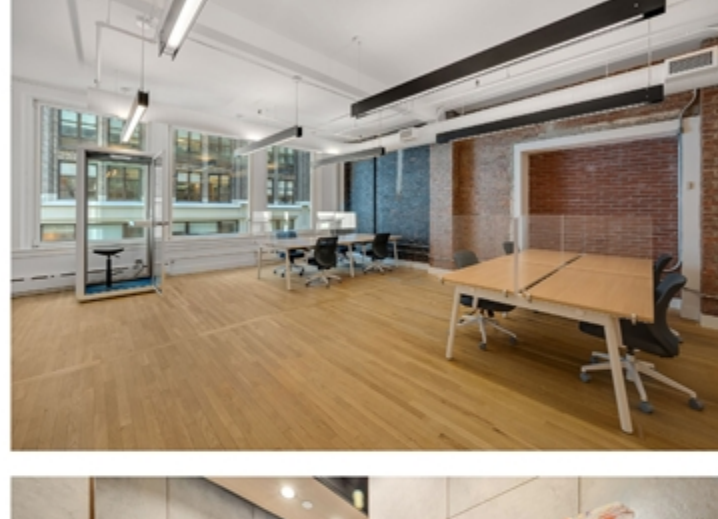
JD Cohen
212-850-5476
jd.cohen@nmrk.com

Ariel Harwood
212-372-2077
ariel.harwood@nmrk.com

NEWMARK

PHOTOS

10-12 E 33



PHOTOS

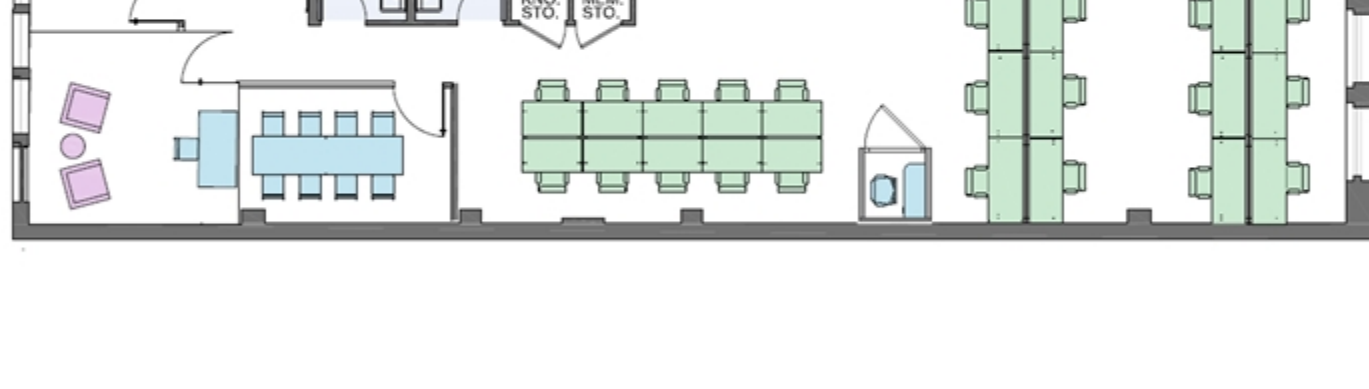
10-12 E 33



FLOOR PLAN

12 E 33

4TH FLOOR



JD Cohen
212-850-5476
jd.cohen@nmrk.com

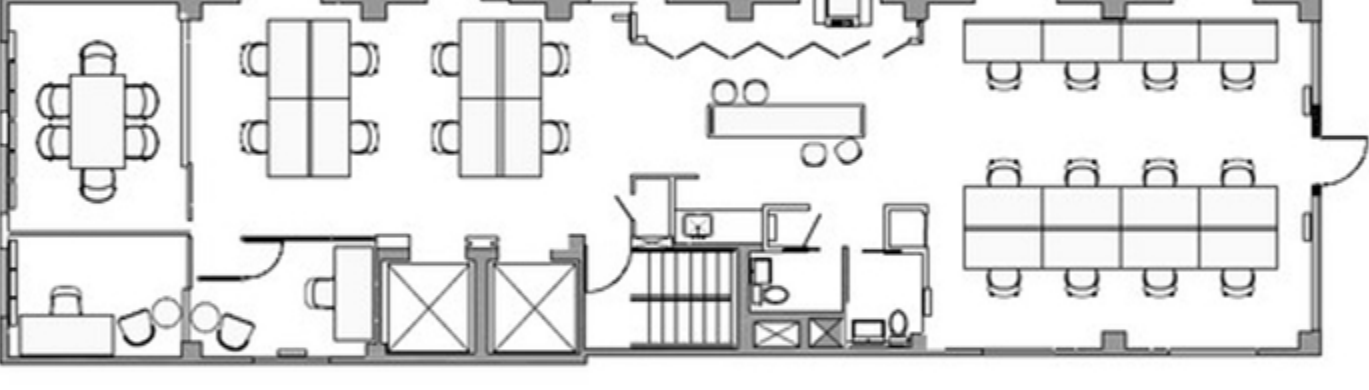
Ariel Harwood
212-372-2077
ariel.harwood@nmrk.com

NEWMARK

FLOOR PLAN

10 E 33

12TH FLOOR



JD Cohen
212-850-5476
jd.cohen@nmrk.com

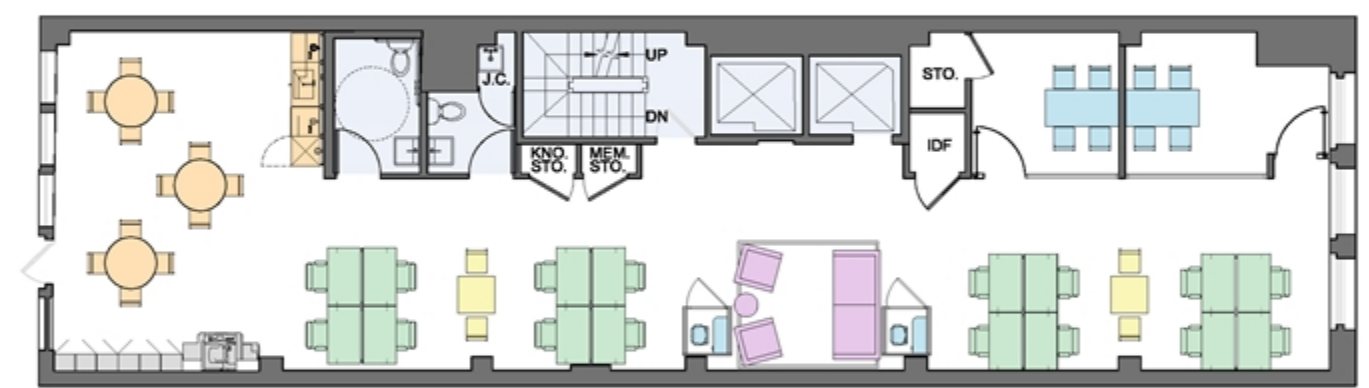
Ariel Harwood
212-372-2077
ariel.harwood@nmrk.com

NEWMARK

FLOOR PLAN

12 E 33

8TH FLOOR



JD Cohen
212-850-5476
jd.cohen@nmrk.com

Ariel Harwood
212-372-2077
ariel.harwood@nmrk.com

NEWMARK

FLOOR PLAN

12 E 33

9TH FLOOR



JD Cohen
212-850-5476
jd.cohen@nmrk.com

Ariel Harwood
212-372-2077
ariel.harwood@nmrk.com

NEWMARK

NEW ENTRY, LOBBY, ELEVATORS AND HEATING SYSTEM

10-12 E 33



10-12 E 33

NEWMARK

JD Cohen
212-850-5476
jd.cohen@nmrk.com

Ariel Harwood
212-372-2077
ariel.harwood@nmrk.com

[DOWNLOAD BROCHURE](#)

125 Park Avenue, New York, NY 10017 | 212-372-2000

The information contained herein has been obtained from sources deemed reliable but has not been verified and no guarantee, warranty or representation, either express or implied, is made with respect to such information. Terms of sale or lease and availability are subject to change or withdrawal without notice.

©2022 Newmark. All Rights Reserved.