

10330 ARGONNE WOODS DRIVE

Woodridge, Illinois

18,735 SF

Available for Lease



BUILDING SPECIFICATIONS:

Available Space: 18,735 SF

Building Size: 81,420 SF

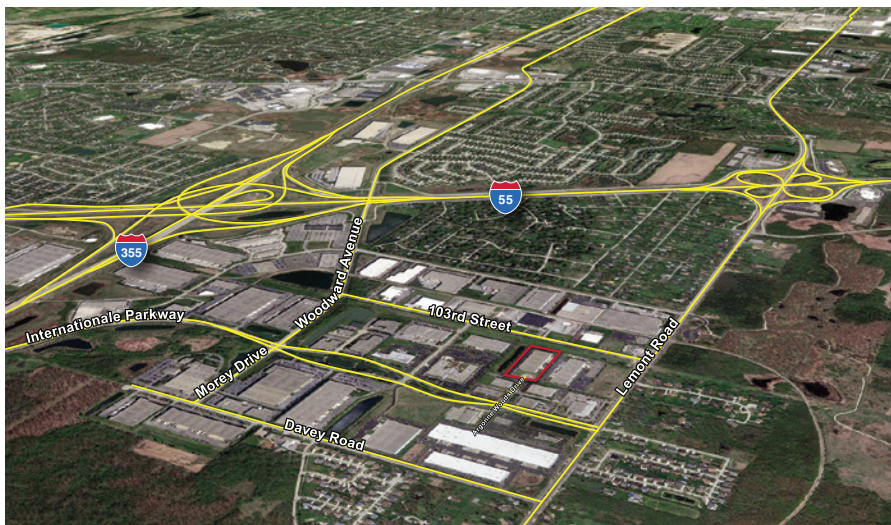
Office: ± 646 SF

Clear Height: 24'

Loading: Four (4) exterior docks

Typical Bay Size: 44' x 48'

Sprinkler: ESFR



- + Available Immediately
- + Immediate access to I-55/I-355 via Lemont Road full interchange
- + Low DuPage County taxes

Owned by



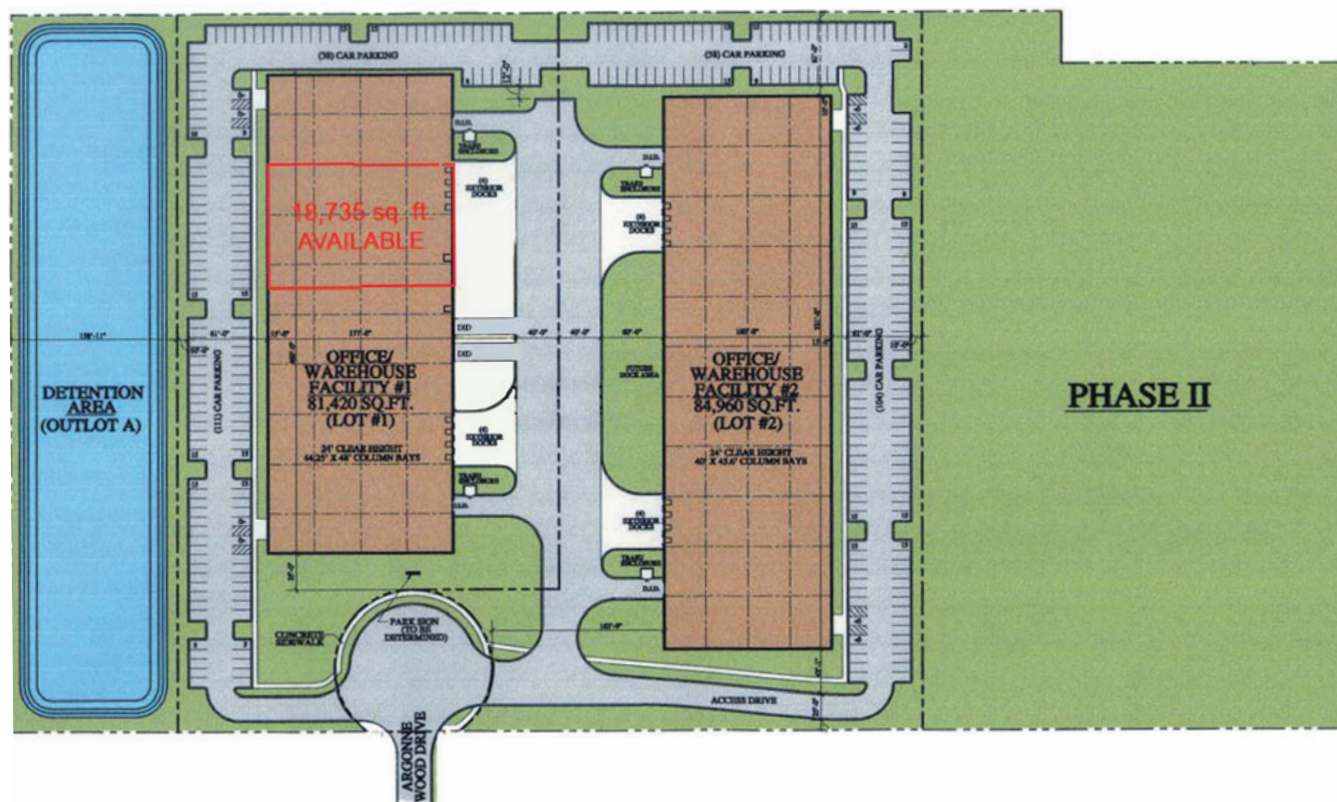
10330 ARGONNE WOODS DRIVE

Woodridge, Illinois

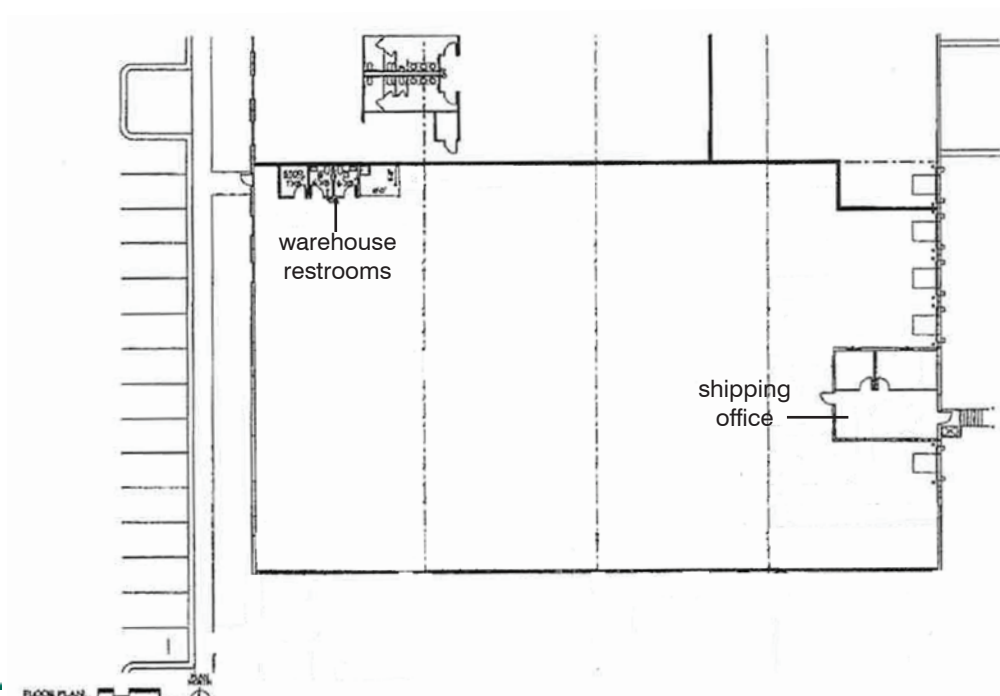
18,735 SF

Available for Lease

BUILDING LAYOUT



AVAILABLE SPACE



Owned by



LEE & ASSOCIATES
COMMERCIAL REAL ESTATE SERVICES

9450 W. BRYN MAWR AVENUE, SUITE 550
ROSEMONT, ILLINOIS 60018
MAIN | (773) 355-3000
WWW.LEE-ASSOCIATES.COM

FOR MORE INFORMATION:

JEFFREY A. GALANTE
Principal
(773) 355-3007 direct
jgalante@lee-associates.com

TERRY M. GRAPENTHIN
Principal
(773) 355-3042 direct
tgrape@lee-associates.com

No warranty or representation is made as to the accuracy of the foregoing information. Terms of sale or lease and availability are subject to change or withdrawal without notice.