

SALE

\$4,300,000

**Land -Agricultural (Not ...
4,362 SF**

11000 Okeechobee Road
Fort Pierce, FL 34945

Property Type: Land -Agricultural (Not Zoned)

Tax Year: 2017

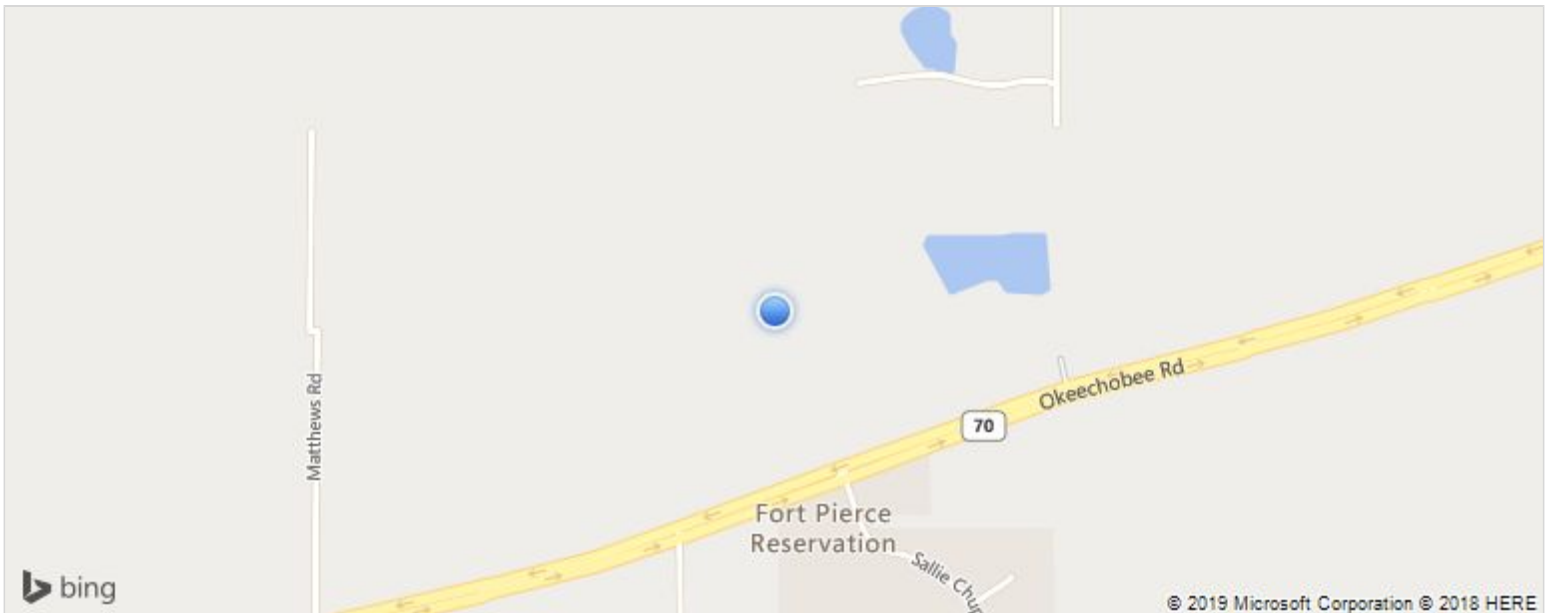
Listing ID: XJ5FS3

MLS ID: RX-10415020

Additional MLS: RX-10415020

Style: Other Style

Building Size: 4,362 SF



11000 Okeechobee Road Fort Pierce FL, 34945 United States

Online Profile <http://www.cbcworldwide.com/properties/profile/XJ5FS3-FortPierce-FL>

Property Description

Transitional 95.75 Acres, Zoned AG-2.5, Existing Land Use of Residential Estate, up to 1 Unit per Acre. The property is easily accessed with frontage of over 1,796 ft along State road 70 (Okeechobee Road), 1.5 miles west of the DR Horton Creekside Community. There is the potential in the future to seek Higher Zoning commensurate with the Surrounding Properties under the present RE Land Use.

Additional Features

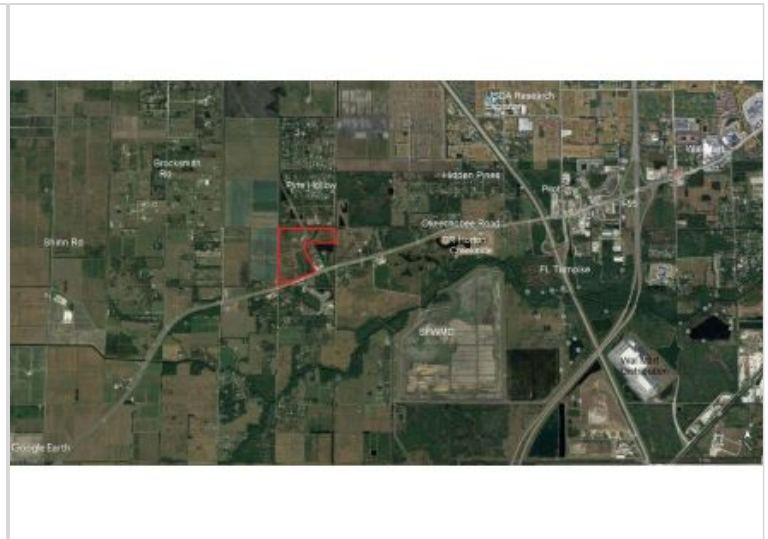
Lot Size: 95.75 AC
Taxes: \$2,272

Philip Strazzulla, LLC

philip.strazzulla@cbparadise.com

Direct 772-216-4975

Mobile 772-216-4975



<http://www.cbc.flcoldwellbanker.com/>
 772-460-2081

Paradise
 411 North US Highway 1
 Fort Pierce, FL 34950

© 2019 Coldwell Banker Real Estate LLC, dba Coldwell Banker Commercial Affiliates. All Rights Reserved. Coldwell Banker Real Estate LLC, dba Coldwell Banker Commercial Affiliates fully supports the principles of the Equal Opportunity Act. Each Office is Independently Owned and Operated. Coldwell Banker Commercial and the Coldwell Banker Commercial Logo are registered service marks owned by Coldwell Banker Real Estate LLC, dba Coldwell Banker Commercial Affiliates. Each sales representative and broker is responsible for complying with any consumer disclosure laws or regulations.

The information provided is deemed reliable, but it is not guaranteed to be accurate or complete, and it should not be relied upon as such. This listing information should be independently verified before any person enters into a transaction based upon it.