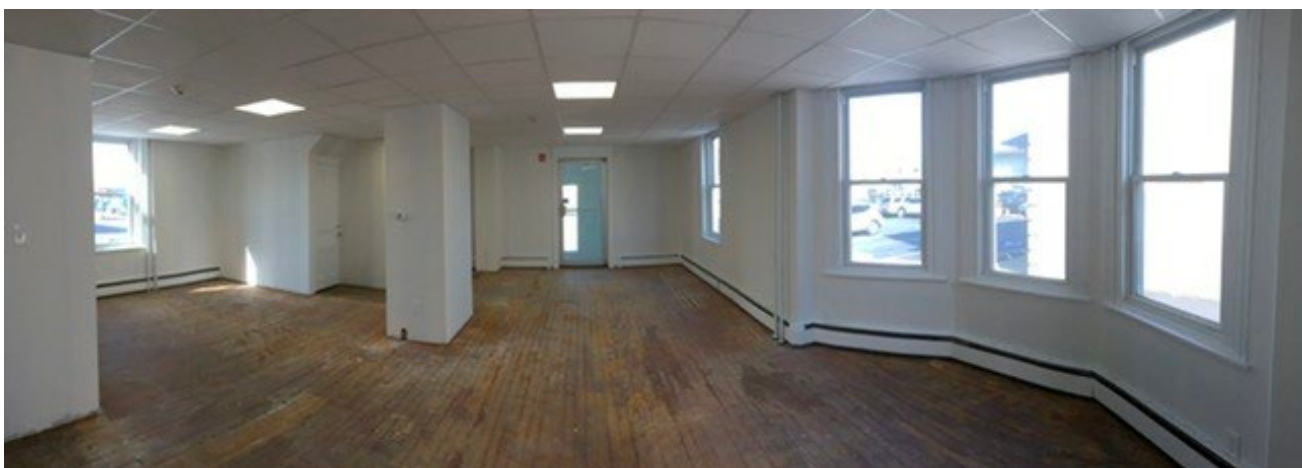
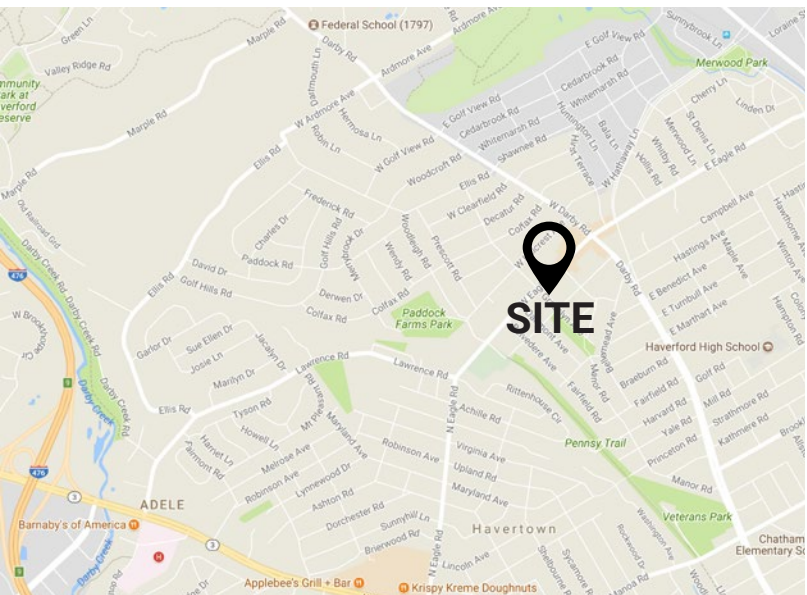
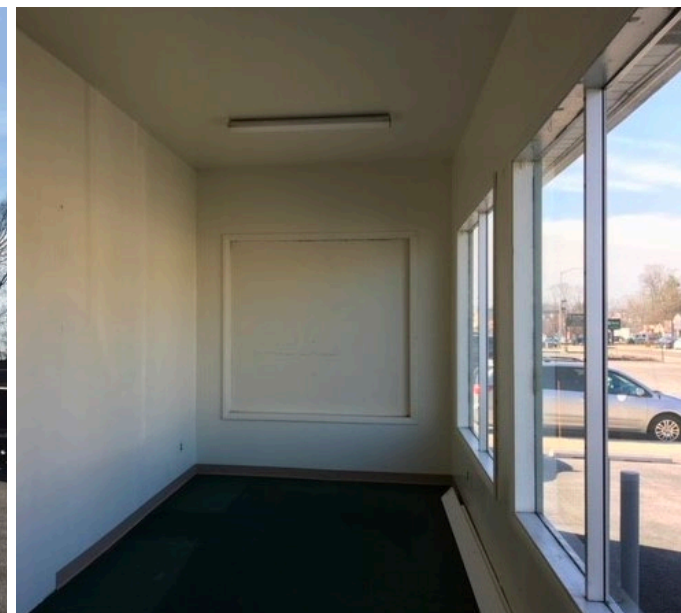


± 1,600 SF RETAIL / OFFICE SPACE AVAILABLE
61 W EAGLE ROAD, HAVERTOWN, PA 19083

FOR LEASE:
\$16 PSF
MODIFIED GROSS BASE

PROPERTY FEATURES

- ✓ ± 1,600 SF of Retail / Office Space along the heavily traveled Eagle Road in Havertown
- ✓ Enclosed front vestibule area followed by a large, open floor plan
- ✓ 1 bathroom and a stockroom section in the rear of the space
- ✓ Ample Parking
- ✓ Great signage along the front side of building

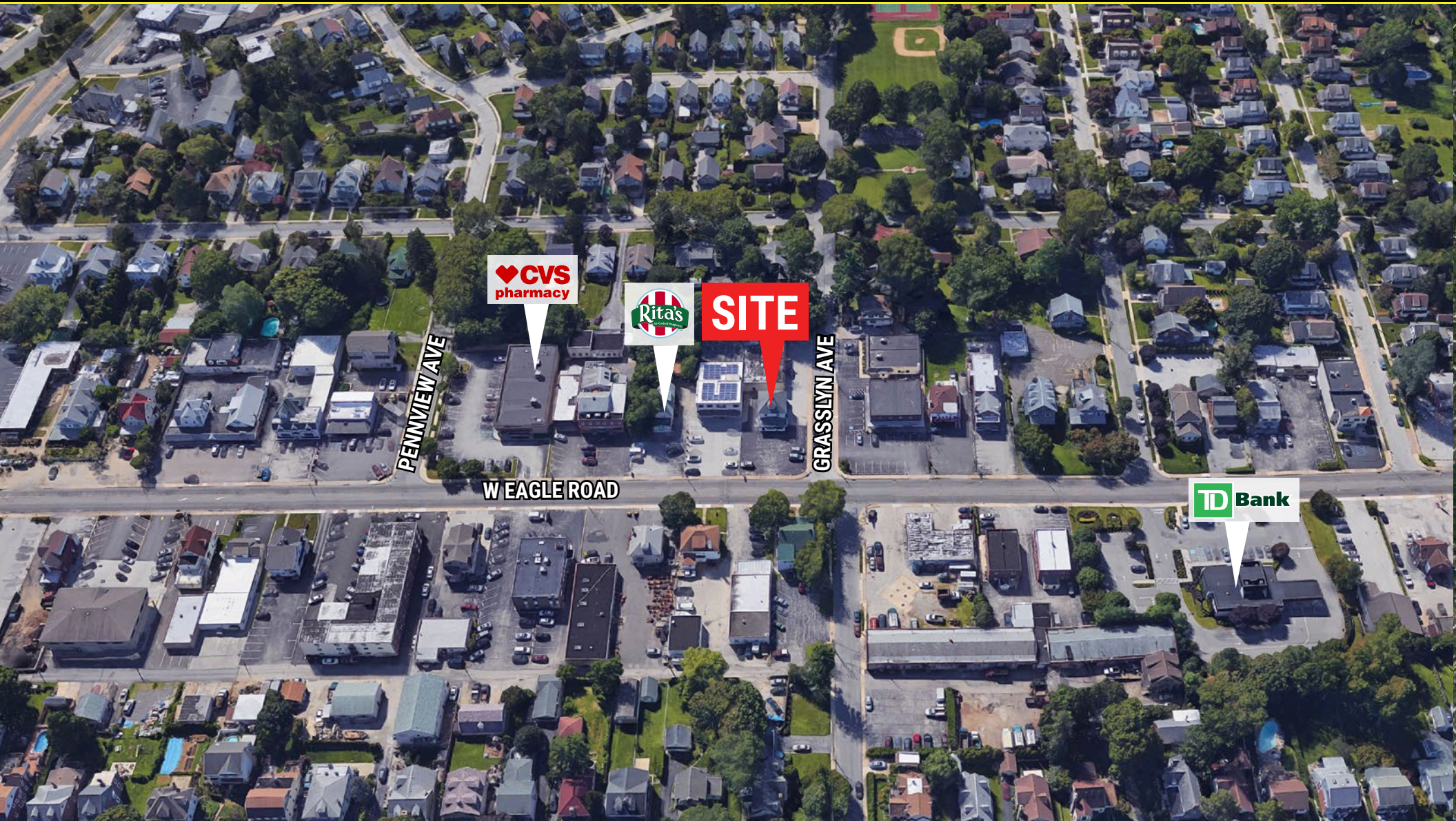


CONTACT US

RONALD CASEY
Phone: 610.359.1100
Cell: 610.764.5826
Email: rcasey@zmcre.com

1306 Wilmington Pike, Suite A-2
West Chester, PA 19382
610.359.1100
www.zmcre.com

HAVERTOWN SITE LOCATION AERIAL - 61 W EAGLE ROAD



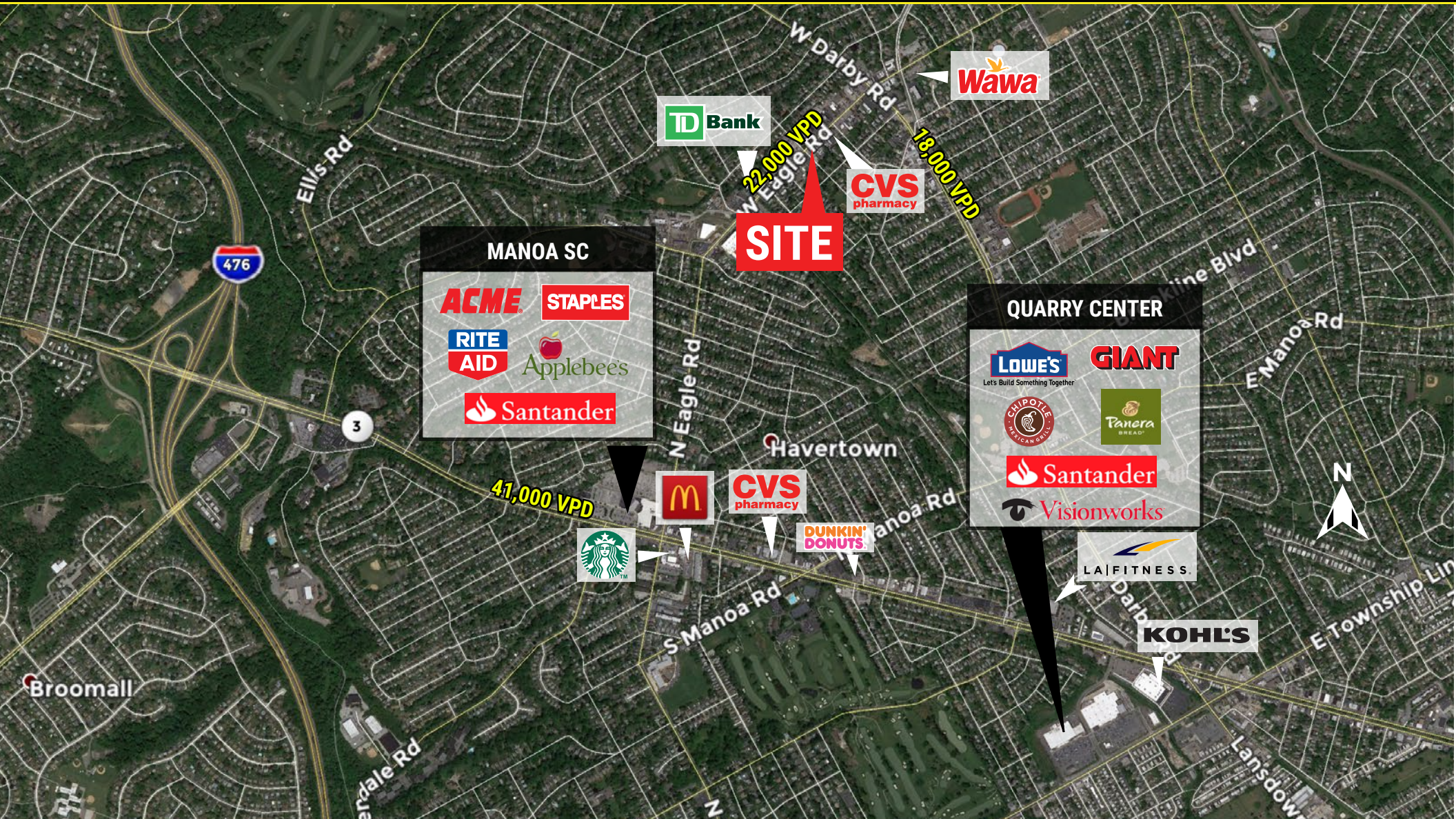

ZOMMICK MCMAHON
COMMERCIAL REAL ESTATE

CONTACT US

RONALD CASEY
Phone: 610.359.1100
Cell: 610.764.5826
Email: rcasey@zmcre.com

1306 Wilmington Pike, Suite A-2
West Chester, PA 19382
610.359.1100
www.zmcre.com

HAVERTOWN MARKET AERIAL - 61 W EAGLE ROAD



CONTACT US

ABOUT ZOMMICK McMAHON COMMERCIAL REAL ESTATE

Zommick McMahon Commercial Real Estate, Inc. has been a Metro Philadelphia Area staple since its inception in 1949. The Company was founded by Joseph Zommick, and continues today with Ryan McMahon and his highly experienced staff, whom are all results-oriented professionals.

SOME OF OUR SATISFIED CLIENTS:



CONTACT US

RONALD CASEY
Phone: 610.359.1100
Cell: 610.764.5826
Email: rcasey@zmcre.com

1306 Wilmington Pike, Suite A-2
West Chester, PA 19382
610.359.1100
www.zmcre.com