

# Cascade Plaza

903 E MAIN ST | AUBURN, WA

**SMALL OFFICE SUITES**

**FOR LEASE**



THE ANDOVER  
COMPANY, INC.

CORFAC INTERNATIONAL

ARNE SVENDSEN  
(206) 947-2885

[asvensen@andoverco.com](mailto:asvensen@andoverco.com)



**ARNE SVENDSEN**  
(206) 947-2885  
asvensen@andoverco.com

Cascade Plaza | 903 E Main Street, Auburn, WA 98002 | The Andover Company, Inc.

# PROPERTY HIGHLIGHTS



SMALL PROFESSIONAL OFFICE SUITE



FULL HVAC THROUGHOUT THE BUILDING



GREAT DOWNTOWN AUBURN LOCATION



ABUNDANT FREE PARKING 4:1,000 SF



ADJACENT TO DOWNTOWN REVITALIZATION



BUILDING AND STREET SIGNAGE AVAILABLE



QUICK ACCESS TO HWY - 18 AND HWY - 167



ELECTRICITY, HEATING, A/C, TRASH ALL INCLUDED IN RENT



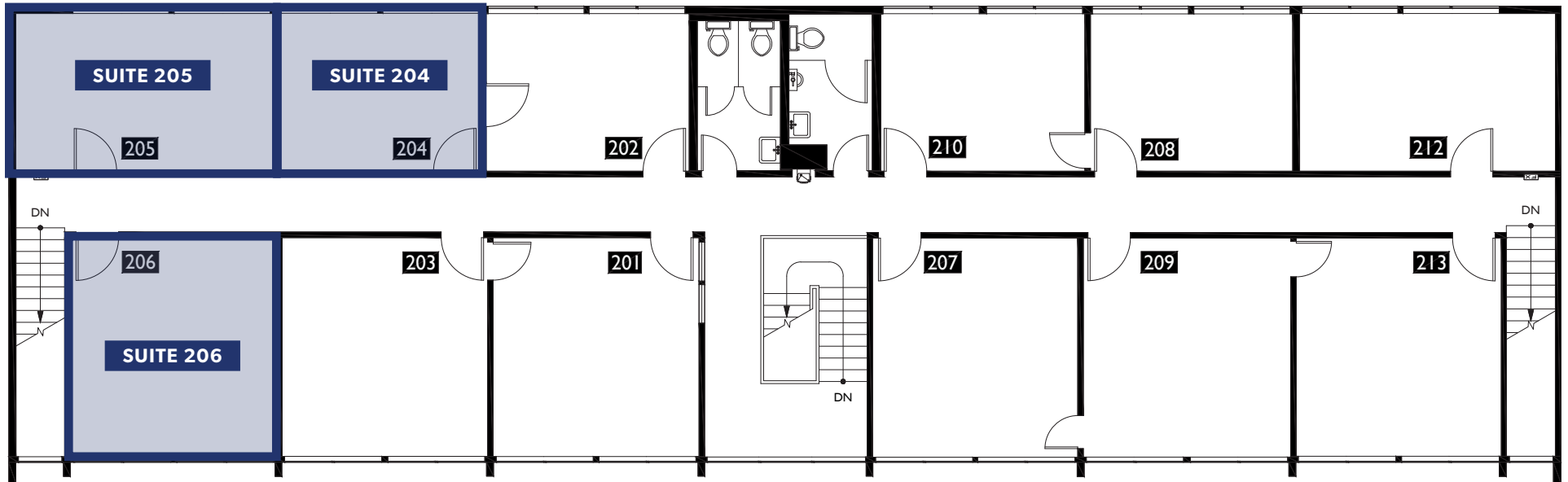
PROFESSIONALLY MANAGED

# AVAILABLE OFFICE SPACES

SUITE	RENTABLE SF	FULL SERVICE RENT	COMMENTS
206	321	\$508/MO	1 secure office, lots of windows! Quick access to Hwy-18 and Hwy-167, Close to downtown Auburn. Within walking distance to area amenities. Ample FREE parking.
205	288	\$468/MO	1 secure office, lots of windows! Quick access to Hwy-18 and Hwy-167, Close to downtown Auburn. Within walking distance to area amenities. Ample FREE parking.
204	230	\$378/MO	1 secure office, lots of windows! Quick access to Hwy-18 and Hwy-167, Close to downtown Auburn. Within walking distance to area amenities. Ample FREE parking.

**ARNE SVENDSEN**  
(206) 947-2885  
[asvensen@andoverco.com](mailto:asvensen@andoverco.com)

# FLOOR PLANS



**ARNE SVENDSEN**  
(206) 947-2885  
asvensen@andoverco.com

Cascade Plaza | 903 E Main Street, Auburn, WA 98002 | The Andover Company, Inc.





**ARNE SVENDSEN**  
(206) 947-2885  
asvensen@andoverco.com

Cascade Plaza | 903 E Main Street, Auburn, WA 98002 | The Andover Company, Inc.



**ARNE SVENDSEN**  
 (206) 947-2885  
 asvensen@andoverco.com

Cascade Plaza | 903 E Main Street, Auburn, WA 98002 | The Andover Company, Inc.

*The information contained herein has been obtained from reliable sources, but is not guaranteed. A prospective buyer/tenant should verify each item relating to this property and all information contained herein.*