

rcre.com

bradleyco.com

# 10100 & 10150 LANTERN RD

FISHERS, IN 46037

LEASE

OFFICE



## DELAWARE CROSSING I & II // FISHERS CLASS A OFFICE SUITES



### LEASE RATE

\$21.50/SF/FS

### AVAILABLE SF

2,889 - 2,970 SF

- + Have your office close to home, restaurants and shopping
- + Timeless neoclassic architecture. Lots of windows
- + Convenient and abundant parking
- + Easy access to I-69 and I-465
- + On-site ownership/management

[PaulDickTeam.com](http://PaulDickTeam.com)

[in](#) [twitter](#) [f](#) [ig](#) [v](#) #growIndiana

**PAUL DICK, CCIM**  
Senior Vice President  
317.698.8055  
pdick@bradleyco.com

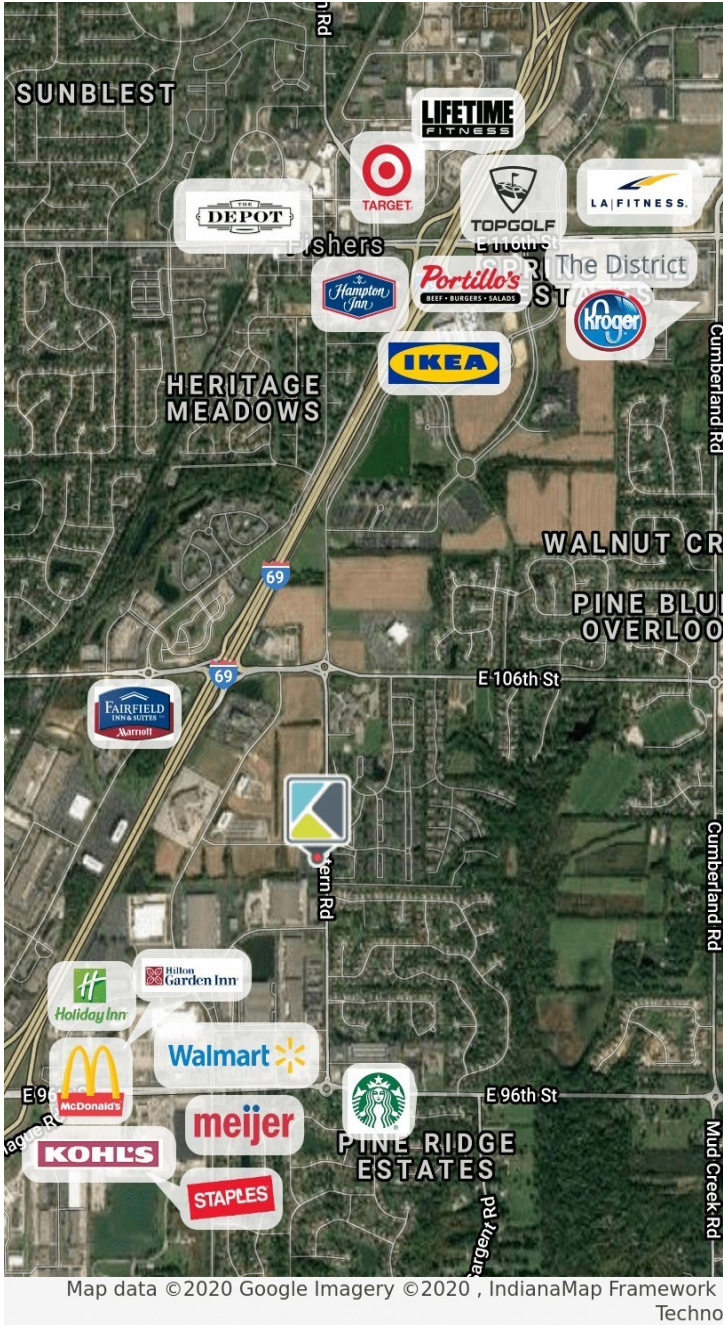
**KEVIN DICK**  
Principal  
317.213.6692  
kdick@bradleyco.com

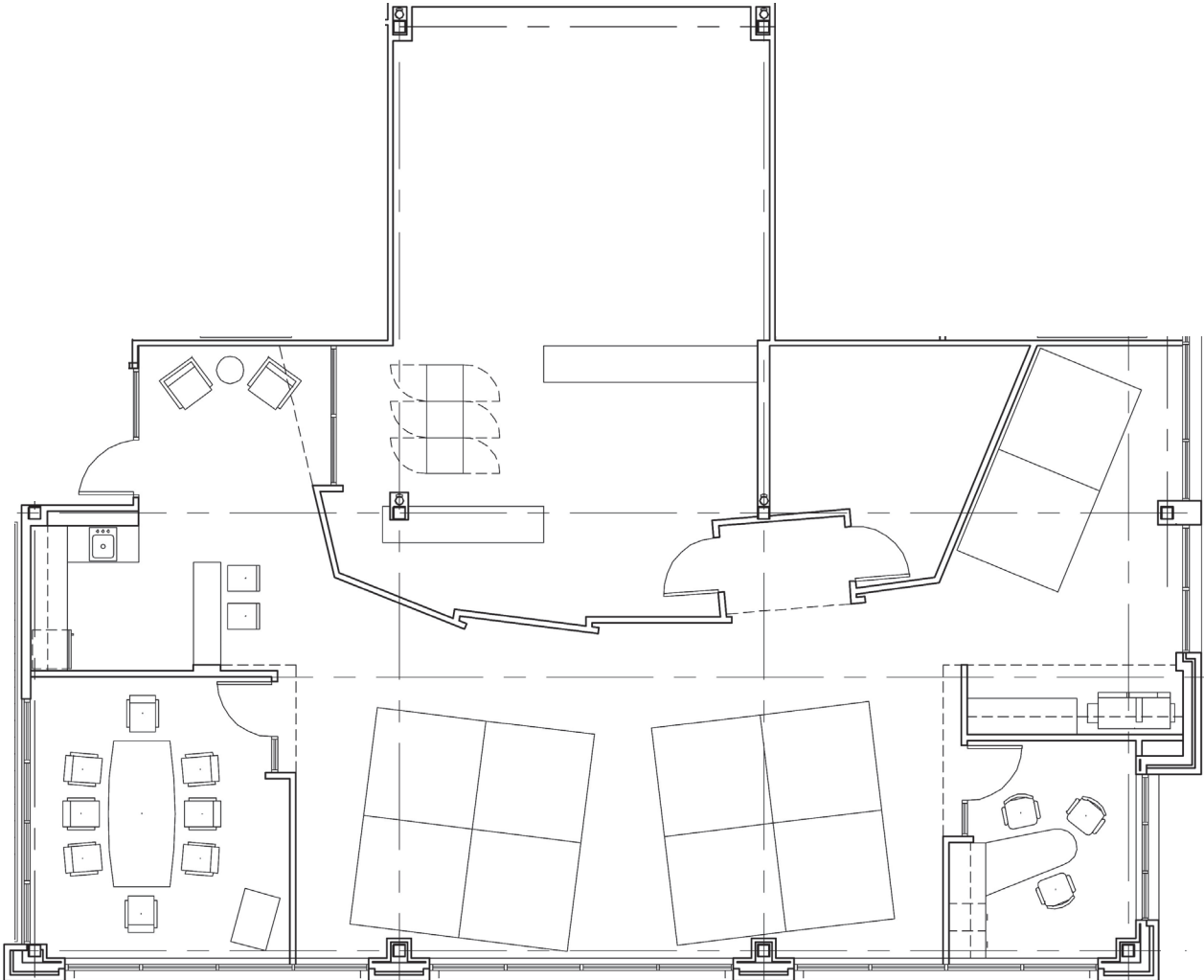




# 10100 & 10150 LANTERN RD

FISHERS, IN 46037

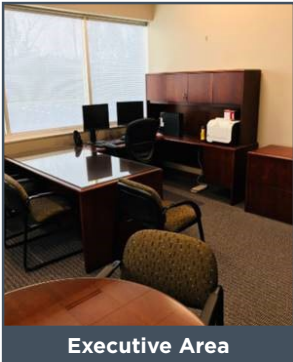




**Suite 275 // 2,889 RSF**







Executive Area



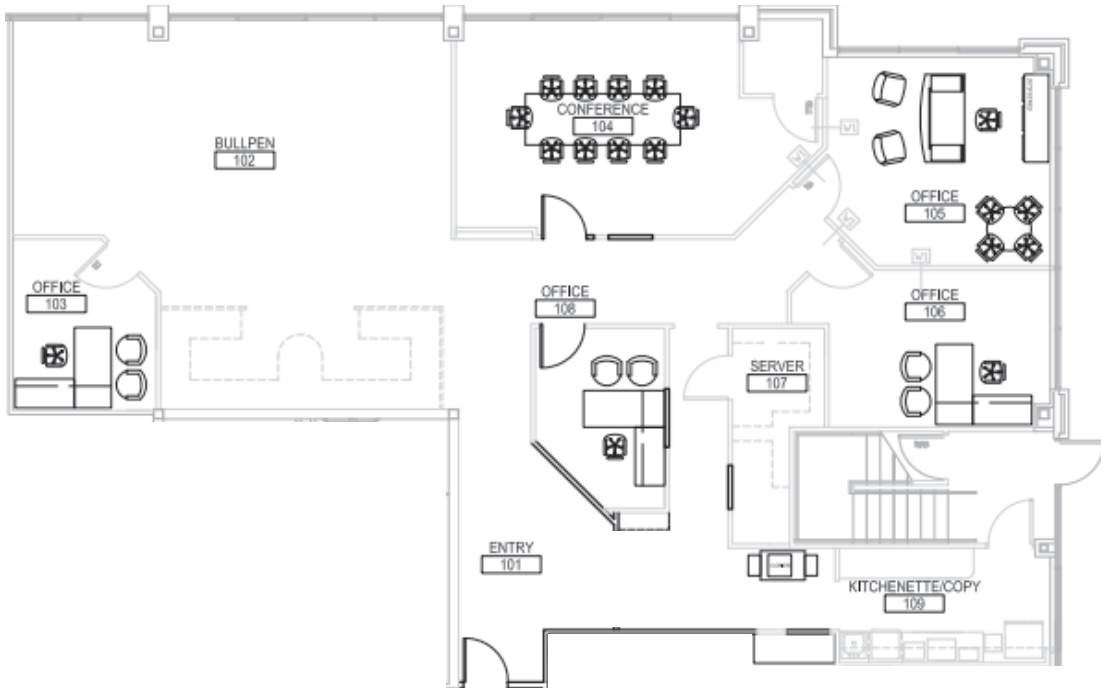
Conference Room



Cubicles



Kitchen





# 10100 & 10150 LANTERN RD

FISHERS, IN 46037

## ABOUT FISHERS, IN



Fishers is one of the fastest growing communities in America. With a population of 92,000, compared to 38,000 in 2000, growth is forecasted to continue at 2% annually for the next 10 years. The town has affordable homes, good healthcare and a diverse business sector. A growing economy, urban amenities and a wealth of recreational opportunities, including 14 parks and 85 miles of trails and greenways, are just a few of the reasons Fishers has seen a steady stream of relocating families. And, although Fishers is a mere 20 miles from downtown Indianapolis, Fishers boasts its own bevy of urban amenities.

### RECENT AWARDS & RECOGNITIONS

- 2019 - #3 Best Places to Live (*Money* magazine)
- 2019 - #2 Safest City in Indiana (*SafeWise*)
- 2019 - Rising Tech City (*TechPoint Mira Awards*)
- 2019 - #16 Best Suburb in America (*Niche.com*)
- 2018 - Green Community of the Year (*AIM*)



Nickle Plate District Amphitheater



Fishers District



The Switch



Fishers Farmers Market