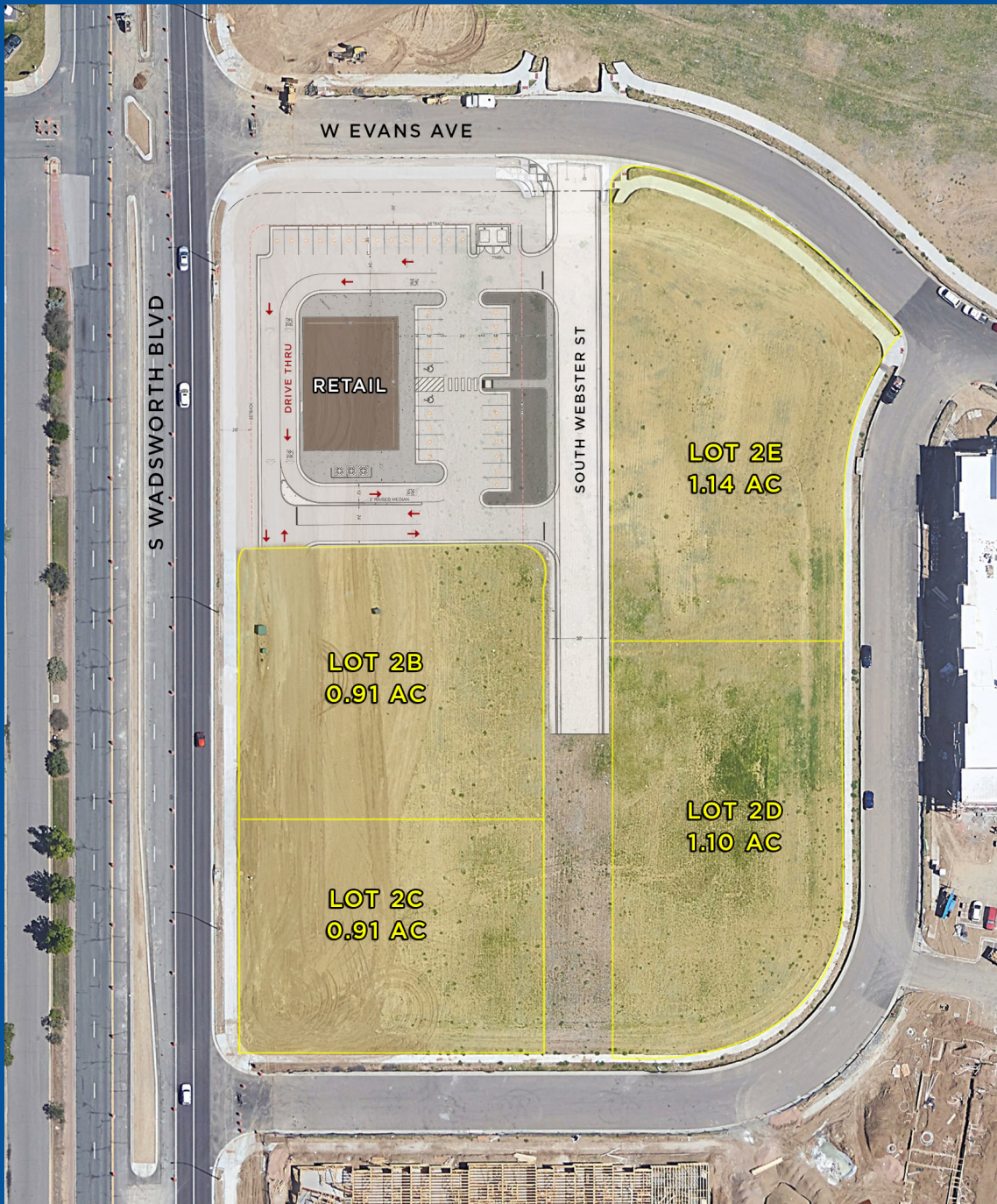


GREEN GABLES INLINE RETAIL

SEC Evans Ave & Wadsworth Blvd



PROPERTY OVERVIEW:

- 5,000 SF - 6,000 SF inline retail space available
- End-cap drive-thru available
- Wadsworth Blvd frontage
- Adjacent patio
- 768 new residences within walking distance
- Unincorporated Jefferson County

Scott Crosbie

303-881-2211

scrosbie@creginc.com

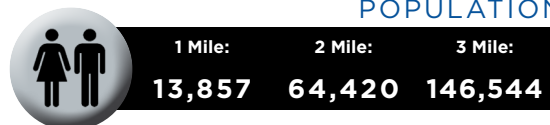
Forrest Hunt

303-597-6500

fhunt@creginc.com

DEMOGRAPHICS

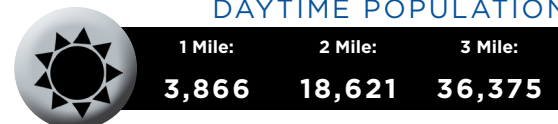
POPULATION



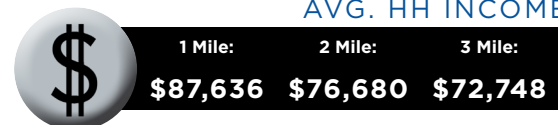
HOUSEHOLDS



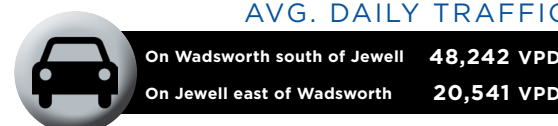
DAYTIME POPULATION



AVG. HH INCOME



AVG. DAILY TRAFFIC



CROSBIE
REAL ESTATE
GROUP

GREEN GABLES INLINE RETAIL

SEC Evans Ave & Wadsworth Blvd



Scott Crosbie: 303-881-2211 scrosbie@creginc.com

Forrest Hunt: 303-597-6500 fhunt@creginc.com

The information contained in this brochure was compiled from reliable sources, however Crosbie Real Estate Group, LLC does not warrant nor guarantee the accuracy of the representations herein. Crosbie Real Estate Group, LLC and its broker associates, as listed, are representing the Landlord/Seller of this property. Different brokerage relationships exist.

