



245 WEST 29TH STREET, New York, NY 10001



99,588.00 SF

Up to 8,264 SF Available

Office building with street-level retail
24 hour access, concrete floors and
easy access to Bus Lines, Metro/Subway
Built: 1929 Architect: Julius Eckmann

Tenants

QUICK RESPONSE SERVICE, INC.
METARHYTHM, INC.
RON WENDT DESIGN, LTD.
PAUL GELSOBELLO, an individual
BUCK MOORHEAD ARCHITECT

For more information call

1- 212- 249- 1550

KOEPEL ROSEN

40 East 69th Street

New York, NY 10021

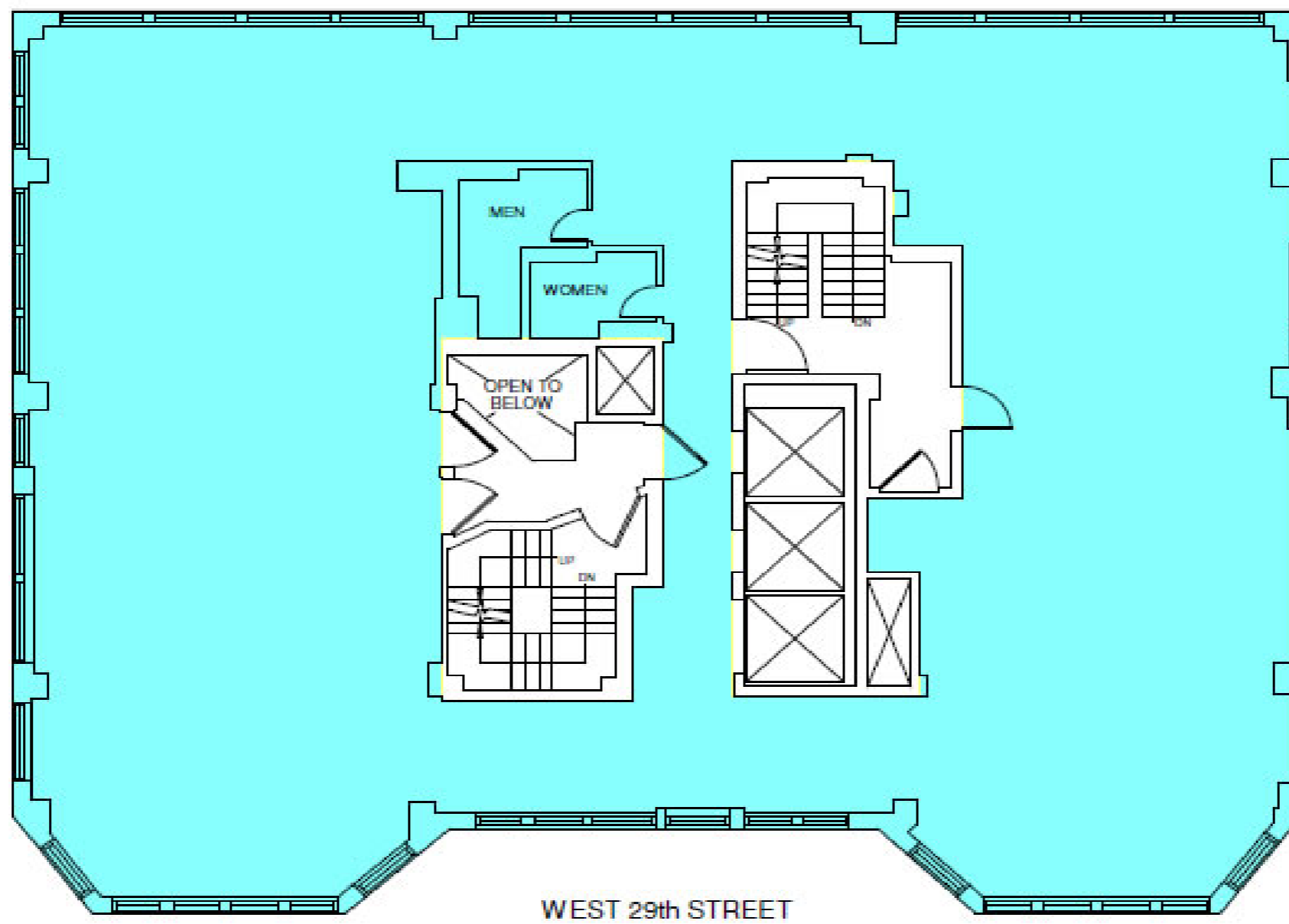
dkoeppel@koeppelrosen.com

245 WEST 29TH STREET, New York, NY 10001

245 West 29th Street



Typical Floor Plan



 Koeppel Rosen LLC

40 East 69th Street
New York, NY 10021
212-249-1550
www.koeppe Rosen.com

Note: All dimensions and conditions are approximate and for information only.

Scale: NTS
Date: February 18, 2016



 L I N K
SYSTEMS

For more information call
1-212-249-1550
KOEPEL ROSEN
40 East 69th Street
New York, NY 10021
dkoeppe@koeppe Rosen.com