



# WASHINGTON SQUARE PAVILION

4856-80 W. NORTH AVE., CHICAGO, IL 60639

**2,200 SF FREE STANDING BUILDING W/ DRIVE-THRU & GROUND LEASE!**



**FOR RENT | RETAIL**

**COME JOIN THE NEWLY REDEVELOPED WASHINGTON SQUARE PAVILION! NEAR GRAND/CICERO METRA TRAIN STATION AND HIGH TRAFFIC NORTH & CICERO INTERSECTION. ACROSS THE STREET FROM MAJOR NATIONAL RETAILERS: FOOD 4 LESS, WALMART, WALGREENS, MENARDS, ROSS, & MORE!**

**SPACE AVAILABLE | 1,245 - 7,700 SF**

**ANNUAL NET RENT | CALL TO INQUIRE**

**POPULATION | 476,000+ WITHIN 3 MILES**

**AVERAGE HH INCOME | \$60,000+ WITHIN 3 MILES**

**TRAFFIC | 24,000+ VEHICLES PER DAY**

\*Available Space Only



RETAIL  
NEARBY



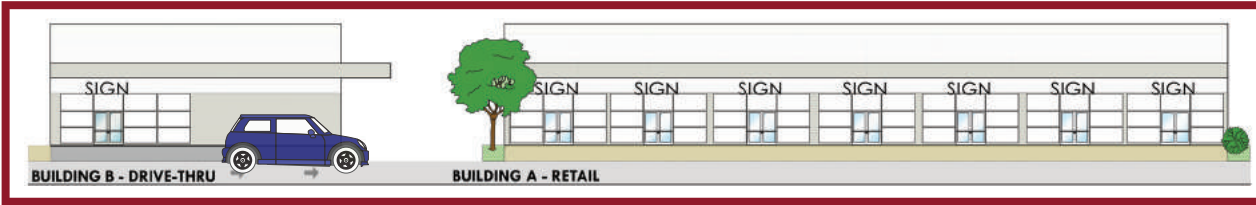
CONTACT

**TERRI COX | 312-337-1001 xt. 2028 | [tcox@matanky.com](mailto:tcox@matanky.com)**

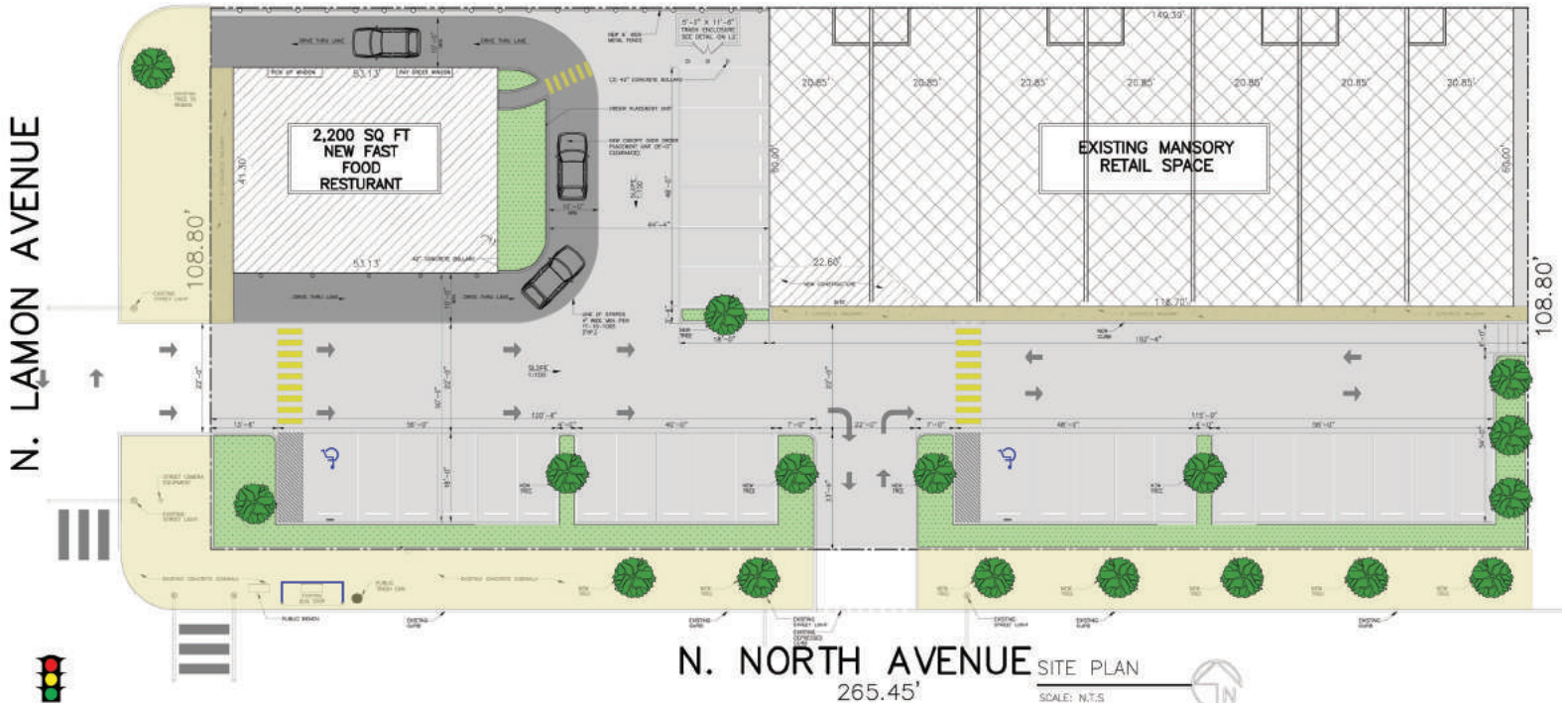
# WASHINGTON SQUARE PAVILION

4856-80 W. NORTH AVE., CHICAGO, IL 60639

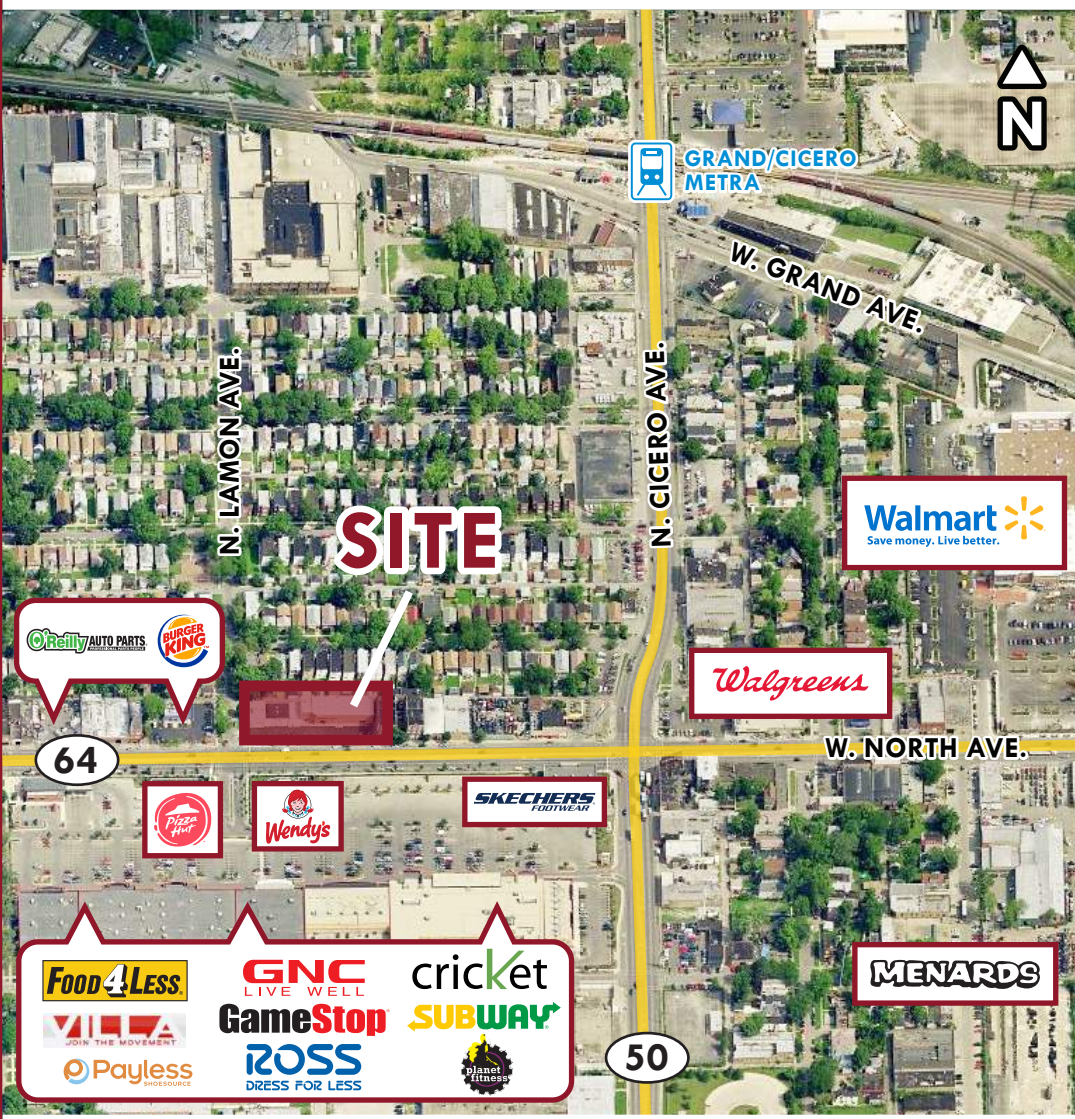
STREET VIEW



SITE PLAN



AERIAL



MAP



312-337-1001



TERRI COX

JOIN US ON:



MATANKY REALTY GROUP

WWW.MATANKY.COM