

For Lease

DEMOLITION
IS COMPLETE!

701 12th Street, Carlstadt/Wood-Ridge, NJ
± 64,390 SF New Construction

Available Q4, 2019

Prime Last Mile Meadowlands Location



Available For Lease

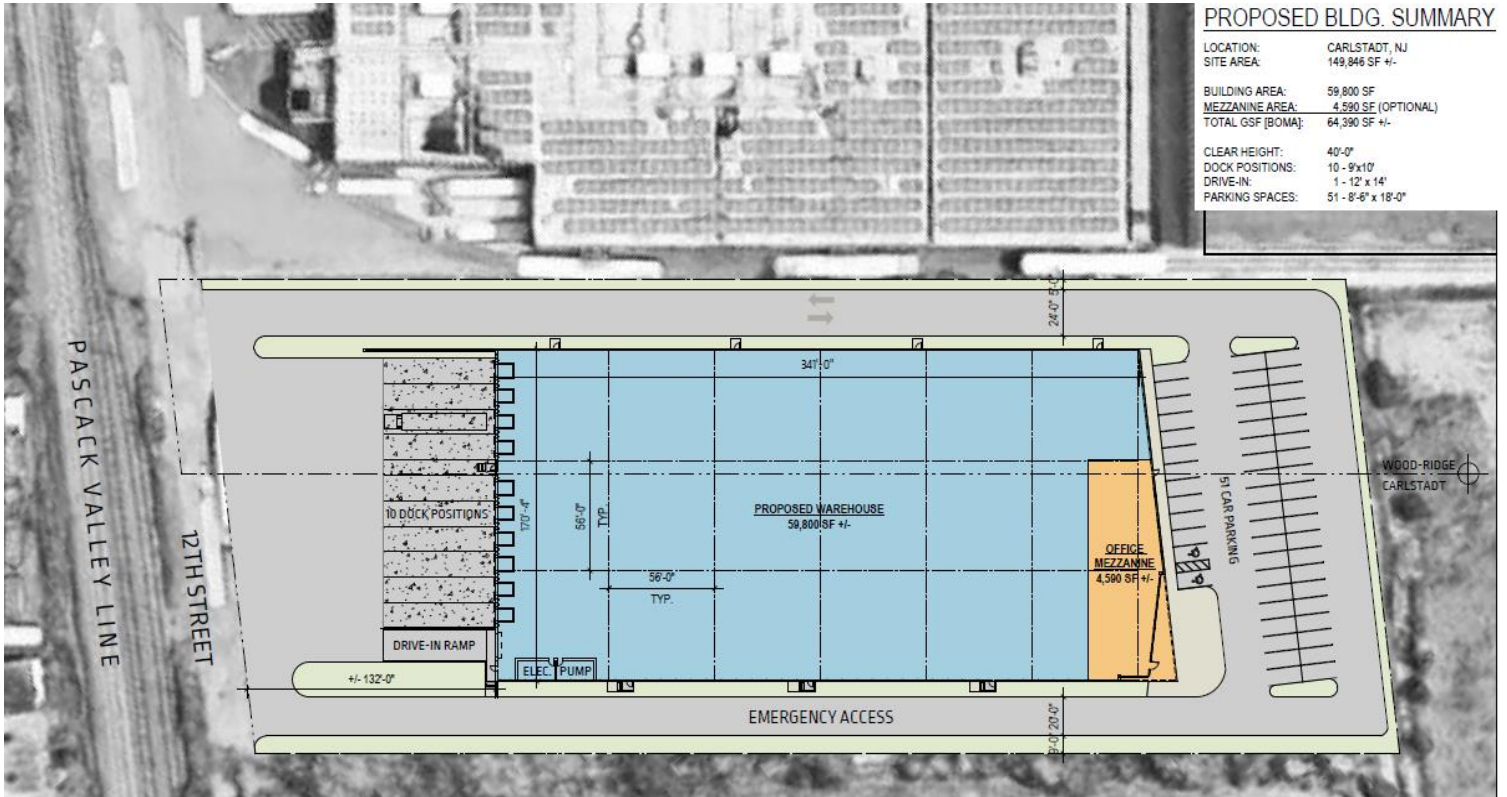
Carlstadt/Wood-Ridge, NJ

Specifications

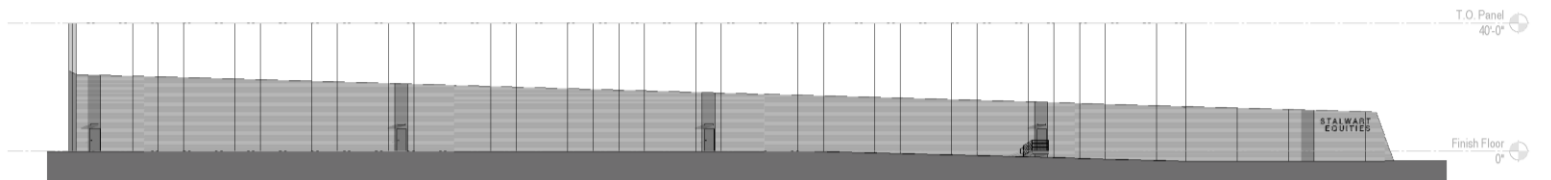
Total Size:	± 64,390 SF
Building Footprint:	± 59,800SF
Mezzanine (future):	± 4,590 SF
Building Dimensions:	170' 4" x 361' 2"
Acres:	3.43
Ceiling Height:	40' clear
Loading:	10 docks, 1 drive-in
Dock Equipment:	40,000 lb. capacity mechanical pit levelers with bumpers, dock seals and z-guards
Column Spacing:	56' x 60'
Floor Slab:	7" thick, 4,000 PSI & FF 45/ FL35
Sprinkler:	ESFR
Power:	2,000 amp, 480/277, 3 phase
Car Parking:	51 spaces
Availability:	Q4, 2019



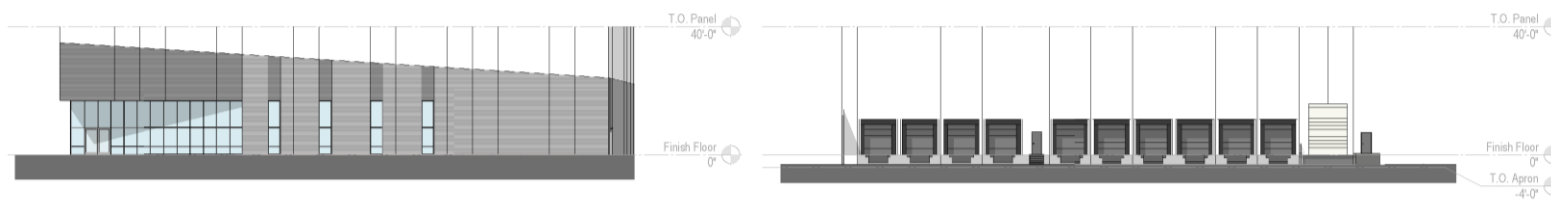
Concept Plan



Elevation Renderings



NORTH ELEVATION



EAST ELEVATION

WEST ELEVATION

