

9048 E Bahia Drive

Scottsdale, AZ



FOR LEASE

Flex Building with $\pm 3,347$ SF Office For Lease

Michelle Gardner
602.513.5126
mgardner@kiddermathews.com

kiddermathews.com

km Kidder
Mathews

9048 E Bahia Drive

Scottsdale, AZ

Availabilities

SUITE 200/205

3,347 SF available

100% office

\$18.00 full service

Private entrance, reception, 4-5 private offices with open area for workstations, and break area

1st and 2nd floor restrooms

Window lighting on the second floor

4:1000 parking available



Michelle Gardner

602.513.5126

mgardner@kiddermathews.com

kiddermathews.com



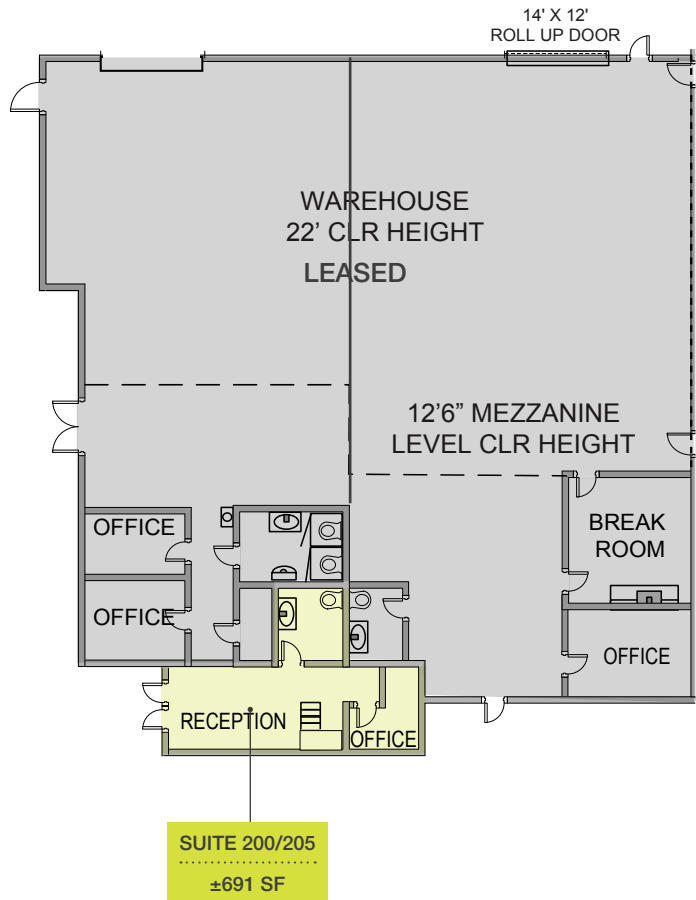
This information supplied herein is from sources we deem reliable. It is provided without any representation, warranty or guarantee, expressed or implied as to its accuracy. Prospective Buyer or Tenant should conduct an independent investigation and verification of all matters deemed to be material, including, but not limited to, statements of income and expenses. Consult your attorney, accountant, or other professional advisor.

9048 E Bahia Drive

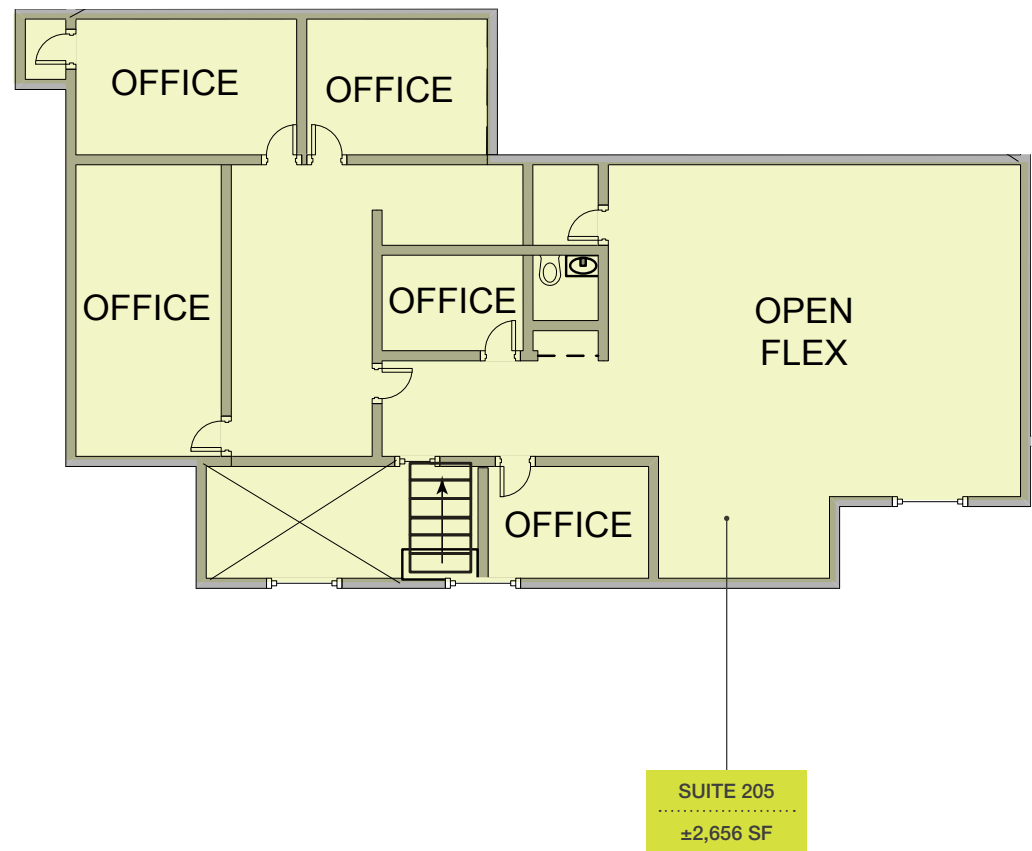
Scottsdale, AZ

Floor Plans

FIRST FLOOR - LEASED



SECOND FLOOR



Michelle Gardner

602.513.5126

mgardner@kiddermathews.com

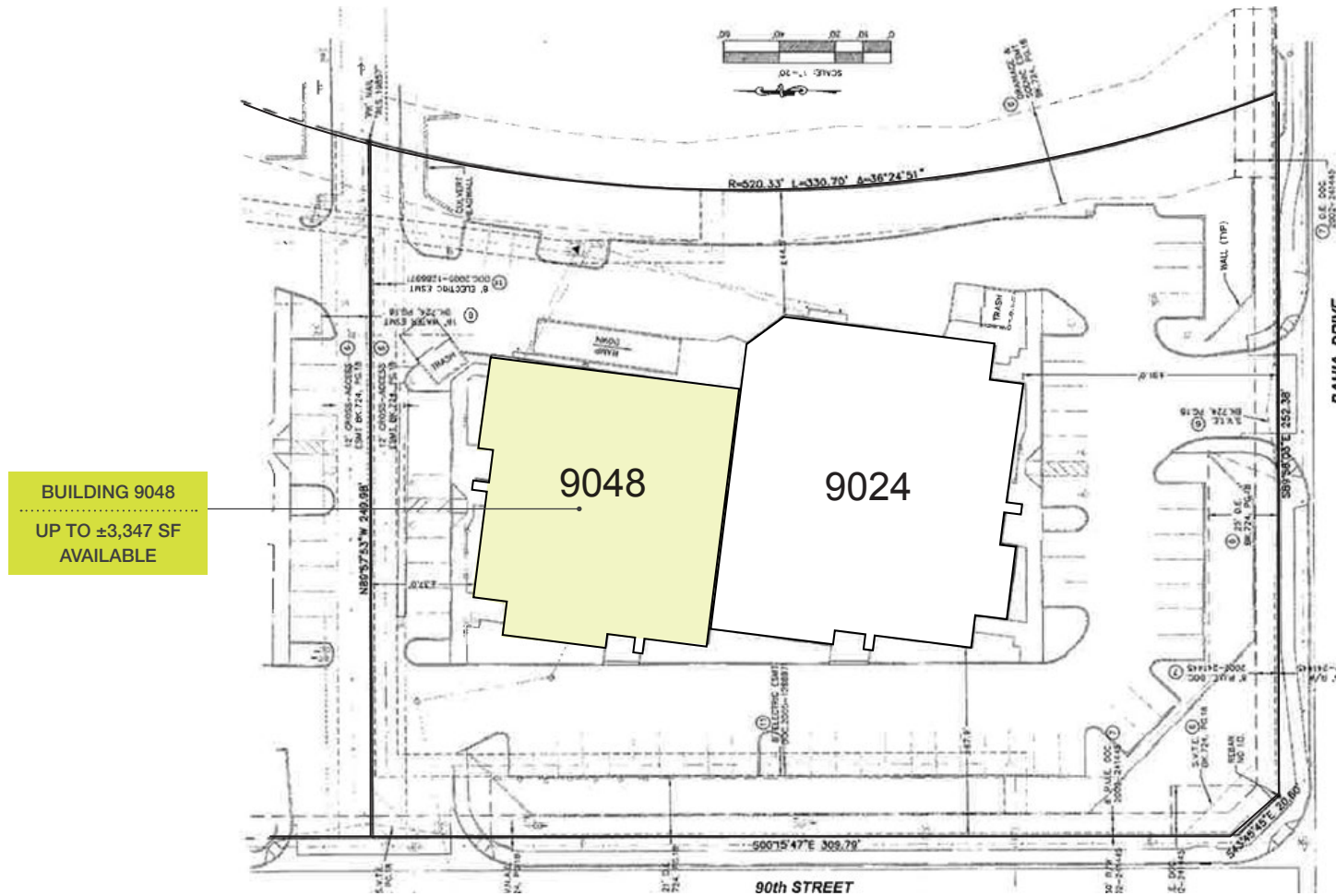
kiddermathews.com



9048 E Bahia Drive

Scottsdale, AZ

Site Plan



Michelle Gardner

602.513.5126

mgardner@kiddermathews.com

kiddermathews.com



This information supplied herein is from sources we deem reliable. It is provided without any representation, warranty or guarantee, expressed or implied as to its accuracy. Prospective Buyer or Tenant should conduct an independent investigation and verification of all matters deemed to be material, including, but not limited to, statements of income and expenses. Consult your attorney, accountant, or other professional advisor.