

FOR LEASE

1849 W MAPLE ROAD
TROY, MI 48084



HI-TECH R&D CORPORATE HQ | UP TO 61,306 SF

PROPERTY FEATURES:

- Ideal corporate HQ available within Troy's Automotion Alley
- 61,306 SF with ability to expand 20,000 SF
- Situated on 6.01 acres zoned MR Overlay (multiple uses) for maximum flexibility
- Prominent building signage along Maple Rd
- 312 parking spaces with the ability to add additional
- One (1) grade level door/ one (1) truckwell
- Close proximity to area hotels, restaurants and shopping centers
- Easy access to I-75 at Crooks Road and 14 Mile Rd



FOR MORE INFORMATION PLEASE CONTACT:

JORDAN FRIEDMAN
jordan.friedman@freg.com

ROBERT GAGNIUK
robert.gagniuk@freg.com

248.324.2000

eCODE 137

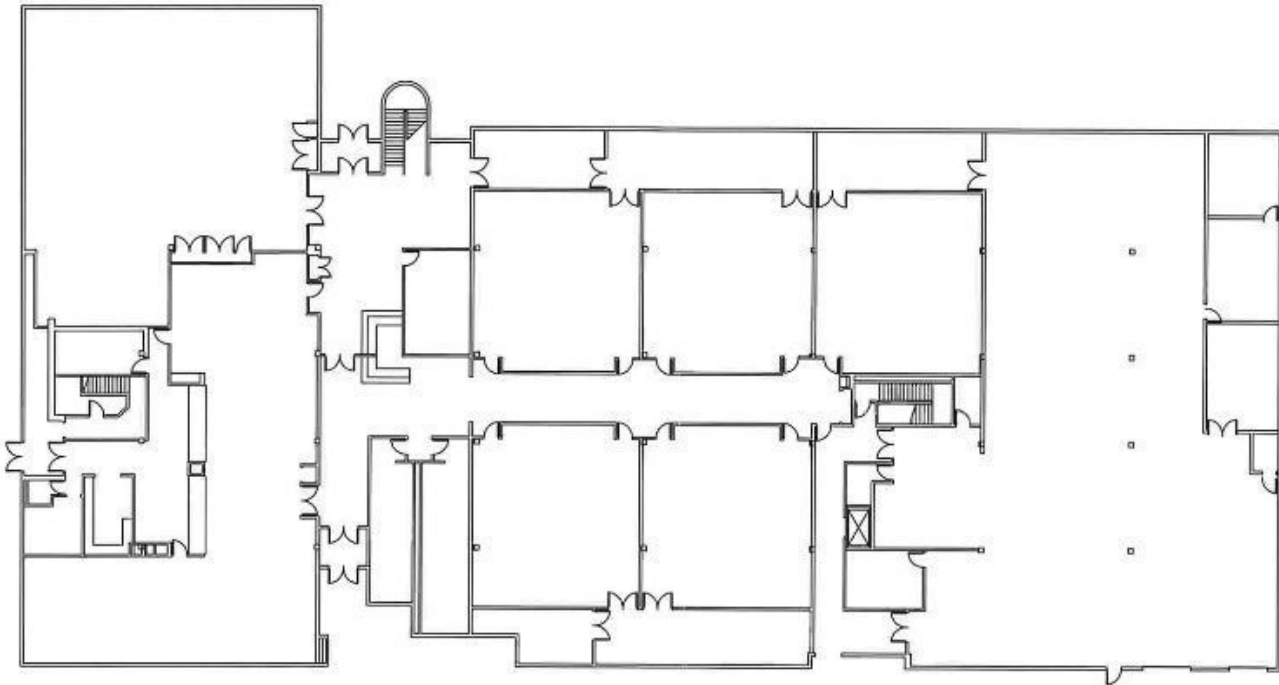
The information provided herein along with any attachment(s) was obtained from sources believed to be reliable, however, Friedman Real Estate makes no guarantees, warranties, or representations as to the completeness or accuracy of such information and legal counsel is advised. All information provided is subject to verification and no liability for reliance on such information or errors or omissions is assumed. The presentation of this property is submitted subject to errors, omissions, change of price or conditions, prior sale or lease, or withdrawal without notice. Copyright © 2018 Friedman Real Estate. All rights reserved.

FOR LEASE

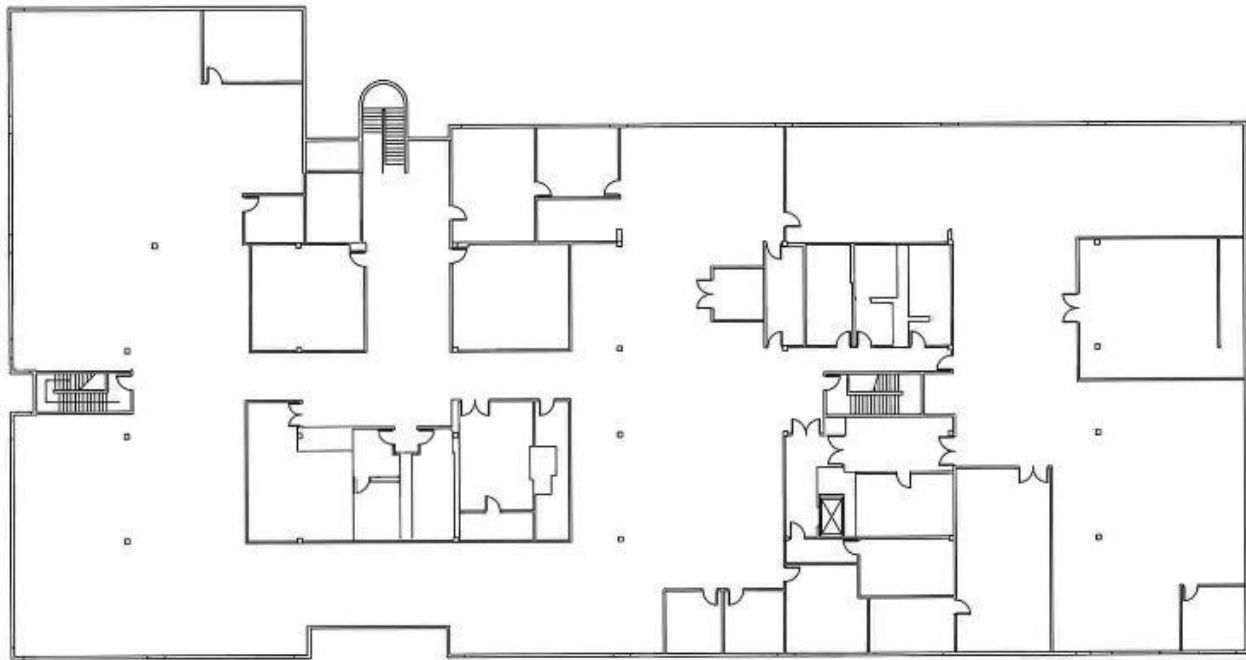
1849 W MAPLE ROAD
TROY, MI 48084



FLOORPLATE- 1st Floor- +/- 31,000 SF



FLOORPLATE- 2nd Floor- +/- 31,000 SF



FOR MORE INFORMATION PLEASE CONTACT:

JORDAN FRIEDMAN jordan.friedman@freg.com

ROBERT GAGNIUK robert.gagniuk@freg.com

248.324.2000

eCODE 137

FOR LEASE

1849 W MAPLE ROAD
TROY, MI 48084



Ability to expand an additional +/- 20,000 SF



SITE LOCATION
1/10/2018

FOR MORE INFORMATION PLEASE CONTACT:

JORDAN FRIEDMAN jordan.friedman@freg.com

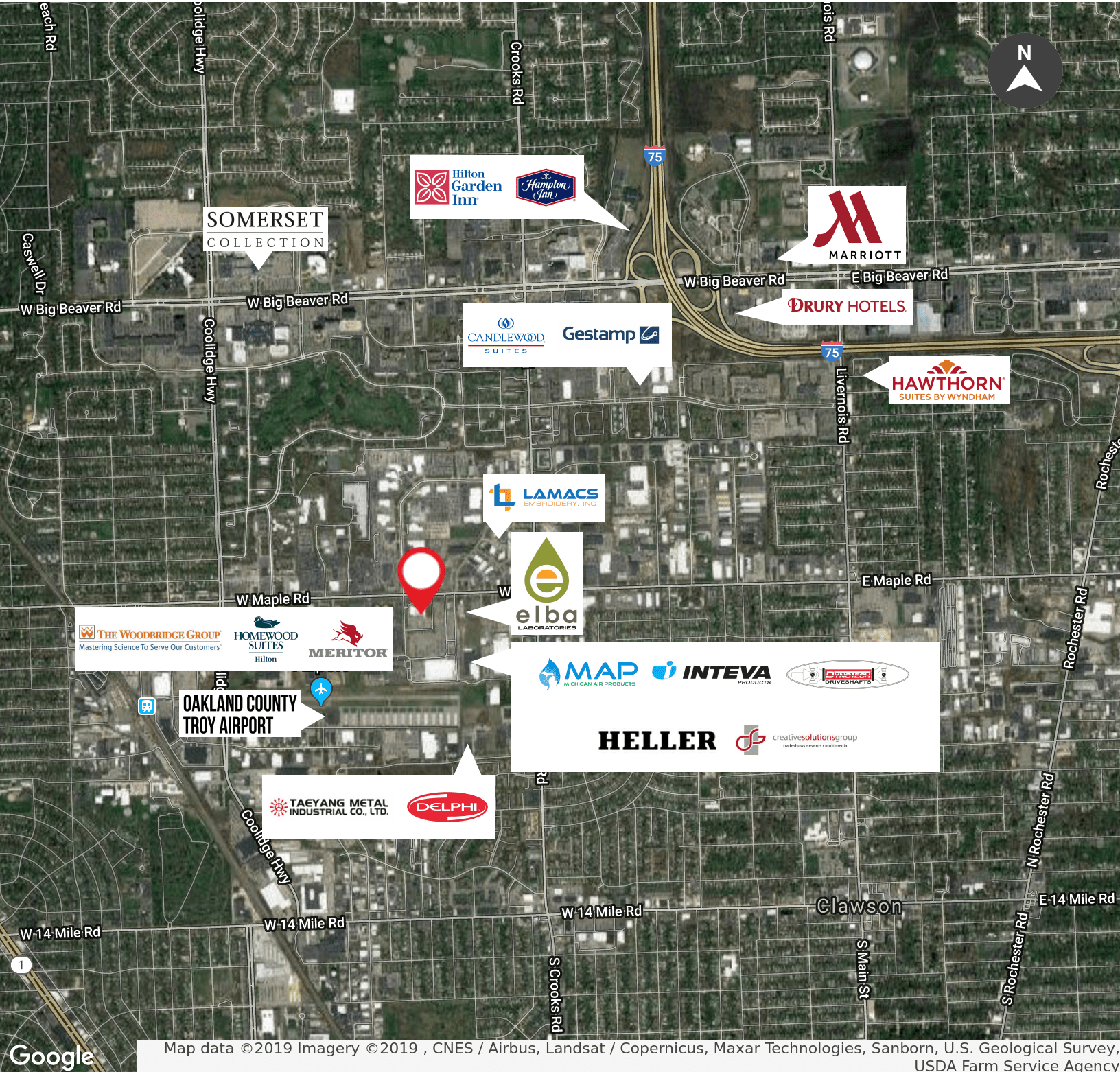
ROBERT GAGNIUK robert.gagniuk@freg.com

248.324.2000

eCODE 137

FOR LEASE

1849 W MAPLE ROAD
TROY, MI 48084



Map data ©2019 Imagery ©2019 , CNES / Airbus, Landsat / Copernicus, Maxar Technologies, Sanborn, U.S. Geological Survey, USDA Farm Service Agency

FOR MORE INFORMATION PLEASE CONTACT:

JORDAN FRIEDMAN jordan.friedman@freg.com

ROBERT GAGNIUK robert.gagniuk@freg.com

248.324.2000

eCODE 137