



# CONVENIENCE STORE

901 S. 13 Highway, Lexington, Missouri

FOR  
SALE



## SALE PRICE: \$150,000 | 3,000 SF BUILDING

### DEMOGRAPHICS

	1 mile	3 miles	5 miles
Estimated Population	1,314	5,040	5,415
Avg. Household Income	\$59,605	\$72,403	\$72,764

- Phillips 66
- Operating convenience store
- New ice machine
- Large building
- Added donuts
- Full line cigarette



CLICK HERE TO VIEW MORE LISTING INFORMATION

For More Information Contact:

RICK KOCHUYT | 816.412.7327 | [rkochuyt@blockandco.com](mailto:rkochuyt@blockandco.com)

Exclusive Agent





# CONVENIENCE STORE

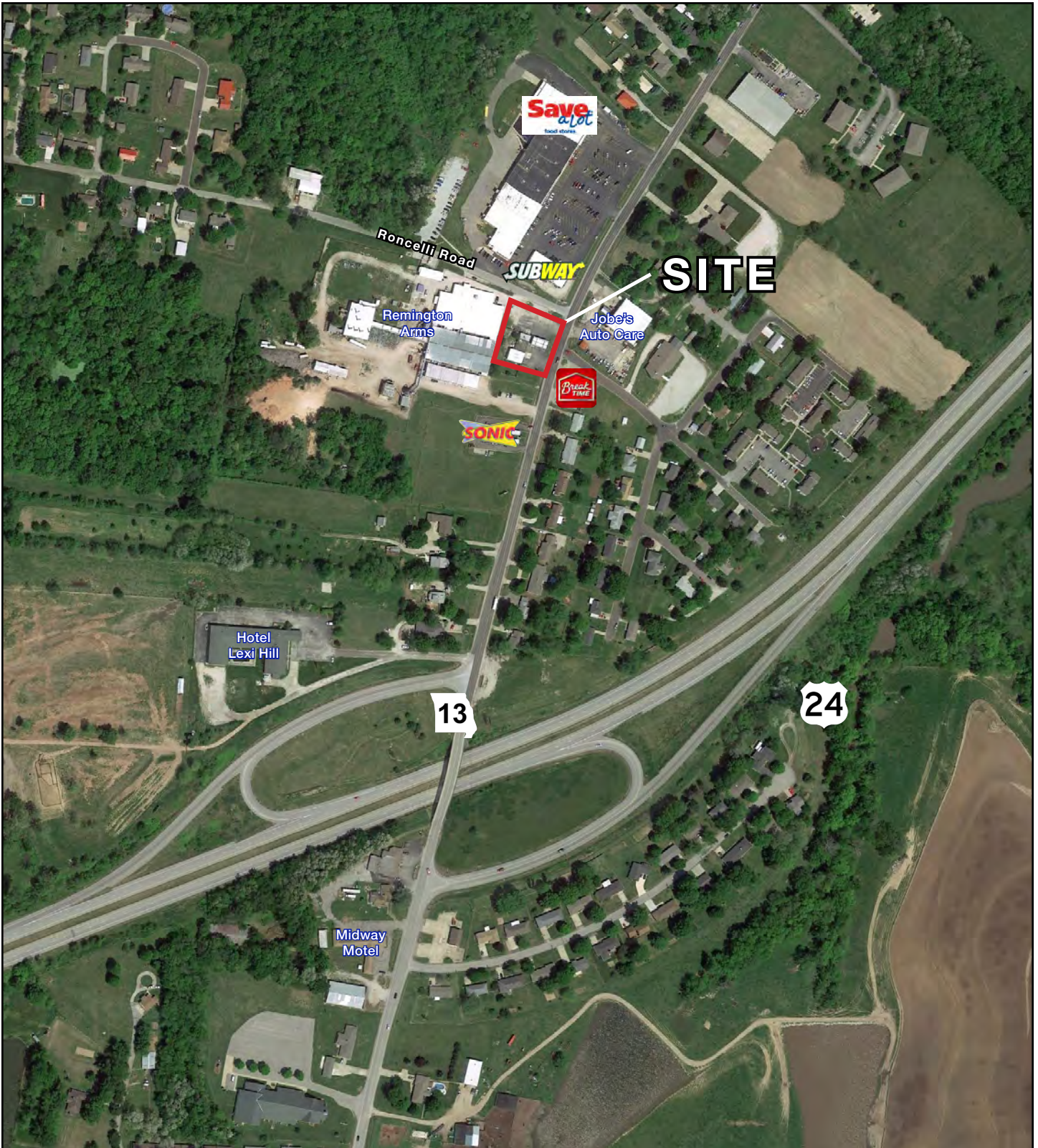
901 S. 13 Highway, Lexington, Missouri

FOR SALE

## PHOTOS



**AERIAL**

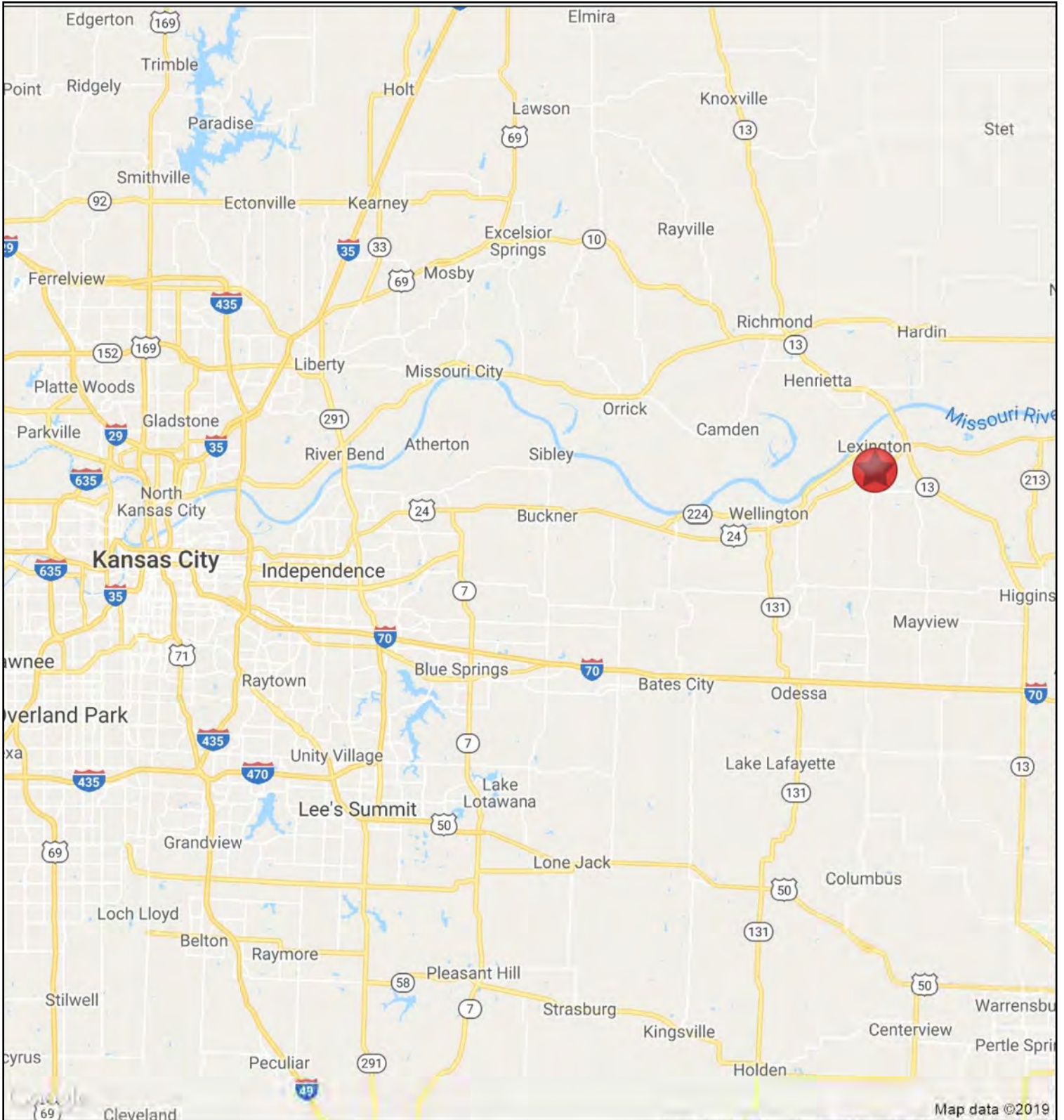


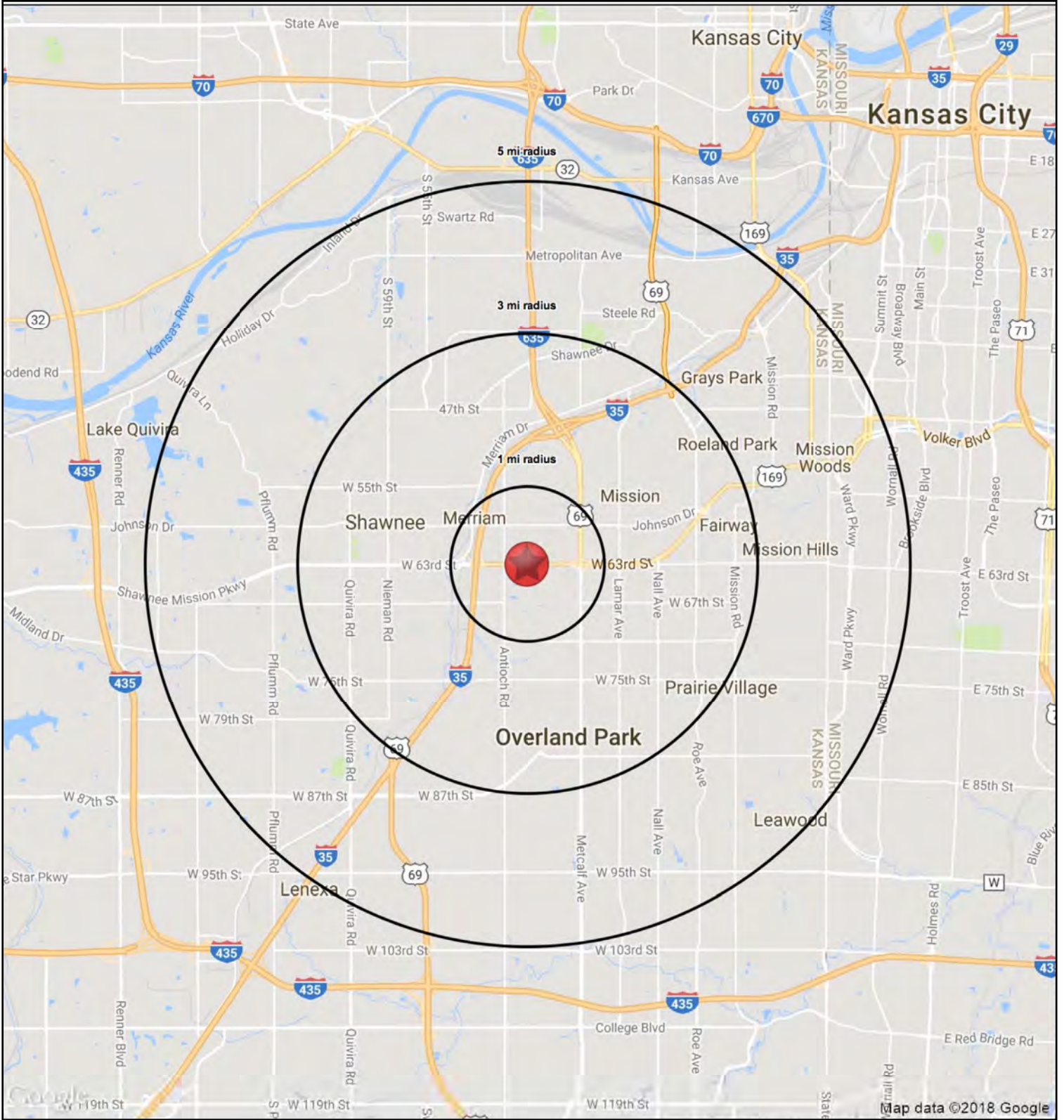


# CONVENIENCE STORE

901 S. 13 Highway, Lexington, Missouri

FOR SALE







# CONVENIENCE STORE

901 S. 13 Highway, Lexington, Missouri

**FOR SALE**

RS1

901 S. 13 Highway		1 mi radius	3 mi radius	5 mi radius
Lexington, MO 64067				
<b>POPULATION</b>	2019 Estimated Population	1,314	5,040	5,415
	2024 Projected Population	1,338	5,128	5,515
	2010 Census Population	1,395	5,325	5,702
	2000 Census Population	1,468	5,406	5,781
	Projected Annual Growth 2019 to 2024	0.4%	0.4%	0.4%
	Historical Annual Growth 2000 to 2019	-0.6%	-0.4%	-0.3%
	2019 Median Age	39.0	40.4	40.6
<b>HOUSEHOLDS</b>	2019 Estimated Households	572	2,128	2,273
	2024 Projected Households	579	2,153	2,302
	2010 Census Households	567	2,101	2,237
	2000 Census Households	608	2,165	2,302
	Projected Annual Growth 2019 to 2024	0.2%	0.2%	0.3%
	Historical Annual Growth 2000 to 2019	-0.3%	-	-
<b>RACE AND ETHNICITY</b>	2019 Estimated White	87.0%	87.6%	87.7%
	2019 Estimated Black or African American	5.2%	5.6%	5.5%
	2019 Estimated Asian or Pacific Islander	1.5%	1.6%	1.6%
	2019 Estimated American Indian or Native Alaskan	0.3%	0.4%	0.4%
	2019 Estimated Other Races	5.9%	4.8%	4.8%
	2019 Estimated Hispanic	5.8%	4.4%	4.4%
<b>INCOME</b>	2019 Estimated Average Household Income	\$59,605	\$72,403	\$72,764
	2019 Estimated Median Household Income	\$41,583	\$51,149	\$51,367
	2019 Estimated Per Capita Income	\$26,412	\$30,987	\$30,988
<b>EDUCATION (AGE 25+)</b>	2019 Estimated Elementary (Grade Level 0 to 8)	3.0%	4.1%	4.1%
	2019 Estimated Some High School (Grade Level 9 to 11)	11.7%	9.8%	9.7%
	2019 Estimated High School Graduate	42.3%	38.2%	38.4%
	2019 Estimated Some College	21.4%	22.7%	23.0%
	2019 Estimated Associates Degree Only	6.0%	6.9%	6.9%
	2019 Estimated Bachelors Degree Only	13.7%	12.2%	12.1%
	2019 Estimated Graduate Degree	1.9%	6.0%	6.0%
<b>BUSINESS</b>	2019 Estimated Total Businesses	109	257	267
	2019 Estimated Total Employees	793	1,776	1,846
	2019 Estimated Employee Population per Business	7.3	6.9	6.9
	2019 Estimated Residential Population per Business	12.1	19.6	20.2

