

CAMBRIDGE SQUARE

EXCLUSIVE LISTING | 2 COMMERCIAL PADS AVAILABLE | SALT LAKE CITY, UTAH



LOCATION The property is located at 3737 South 900 East, Salt Lake City, Utah

SIZE ±0.38 acres

PRICE

8,000 sq ft pad \$199,000

9,000 sq ft pad \$235,000

PARCELS 16321800080000, 16321800090000

ZONING C-2 Commercial

COMMENTS

- Can build 8,000 sq.ft. building on each pad
- Parking & Landscape is common area

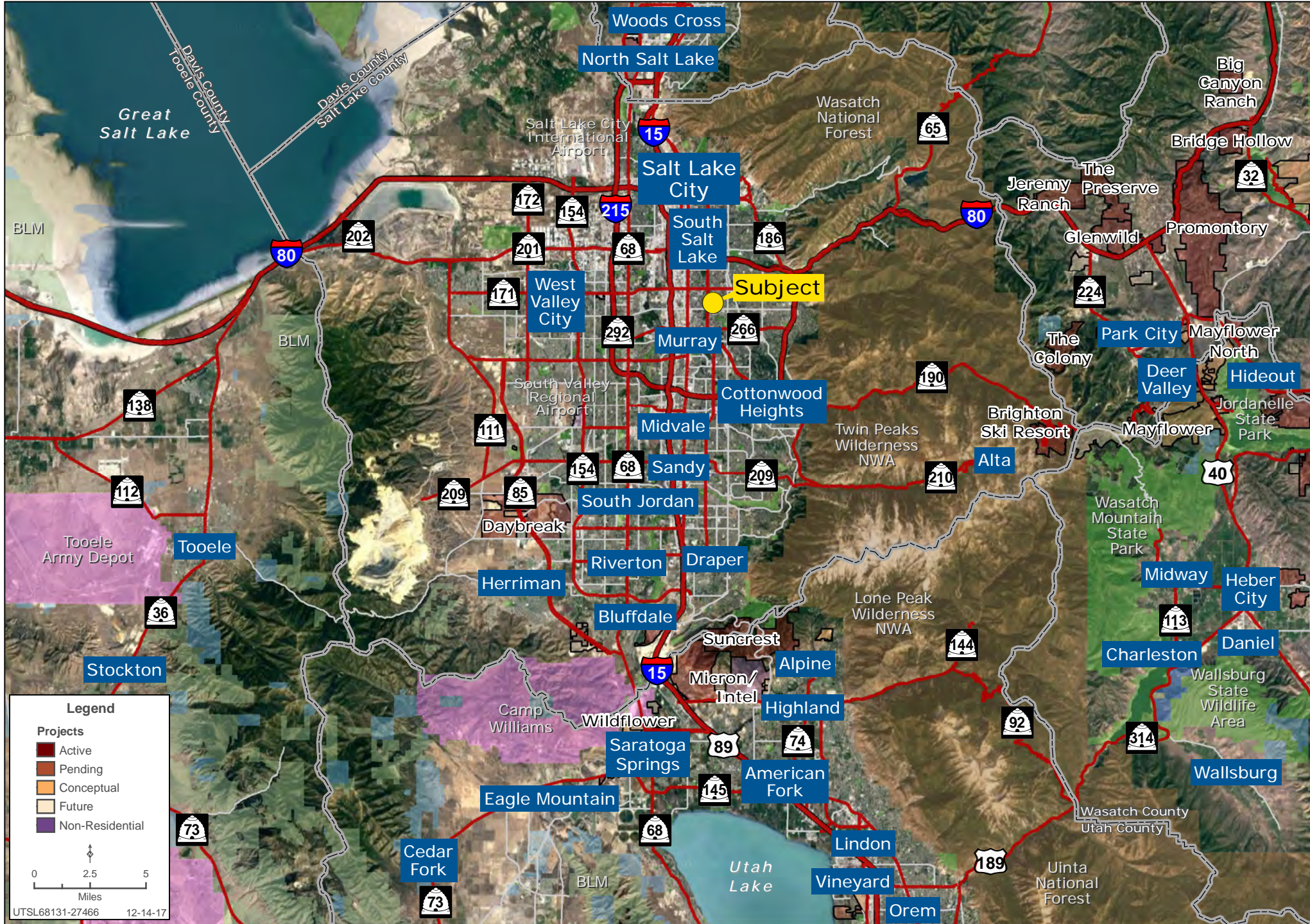
Zachary Hartman | zhartman@landadvisors.com

6443 North Business Park Loop Road, Suite 12, Park City, Utah 84098 ph. 801.573.9181 | www.landadvisors.com

The information contained herein is from sources deemed reliable. We have no reason to doubt its accuracy but do not guarantee it. It is the responsibility of the person reviewing this information to independently verify it. This package is subject to change, prior sale or complete withdrawal. UTSL68131-3.16.18

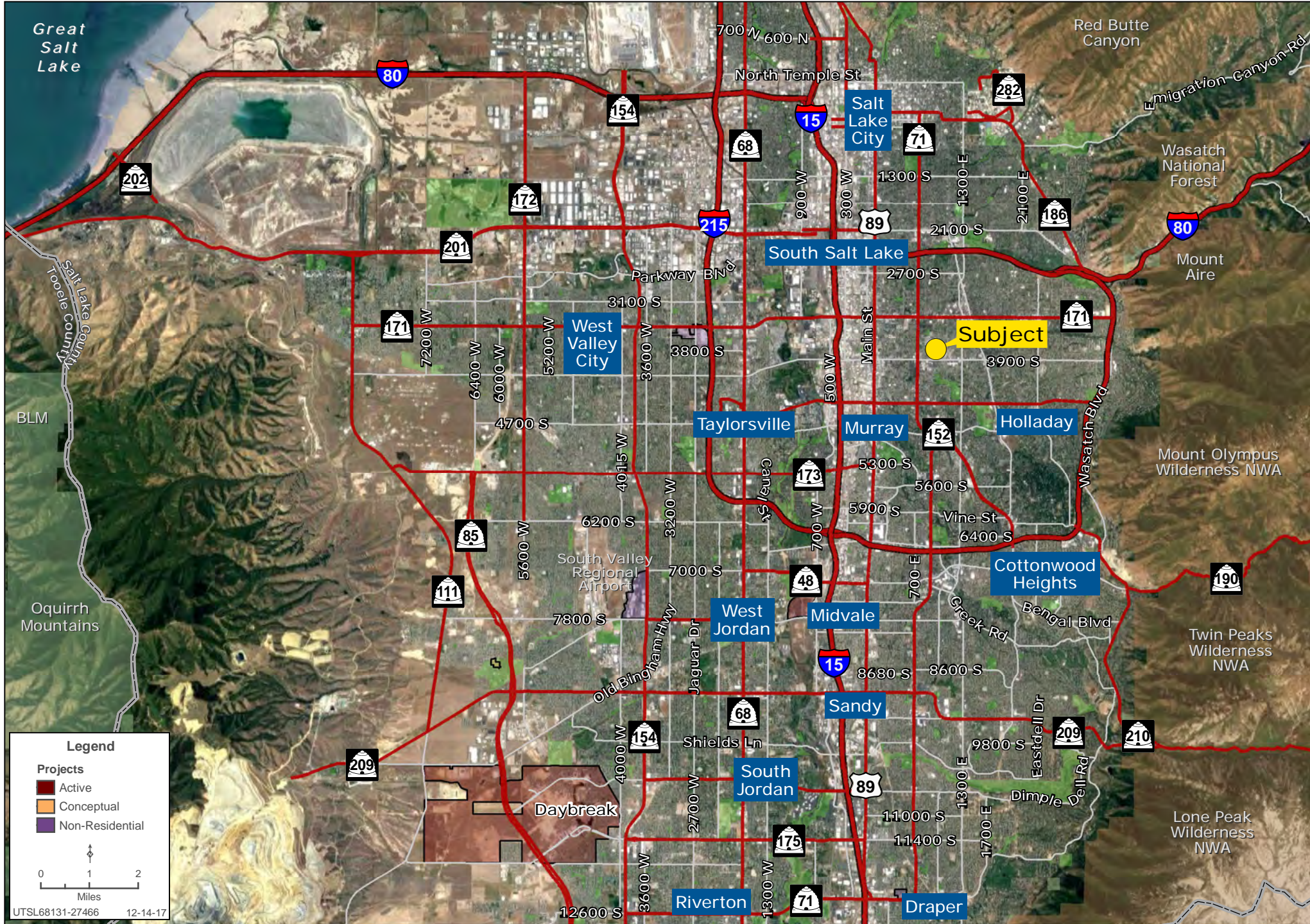
CAMBRIDGE SQUARE 900 E SLC REGIONAL MAP

Zachary Hartman | 801.573.9181 | www.landadvisors.com



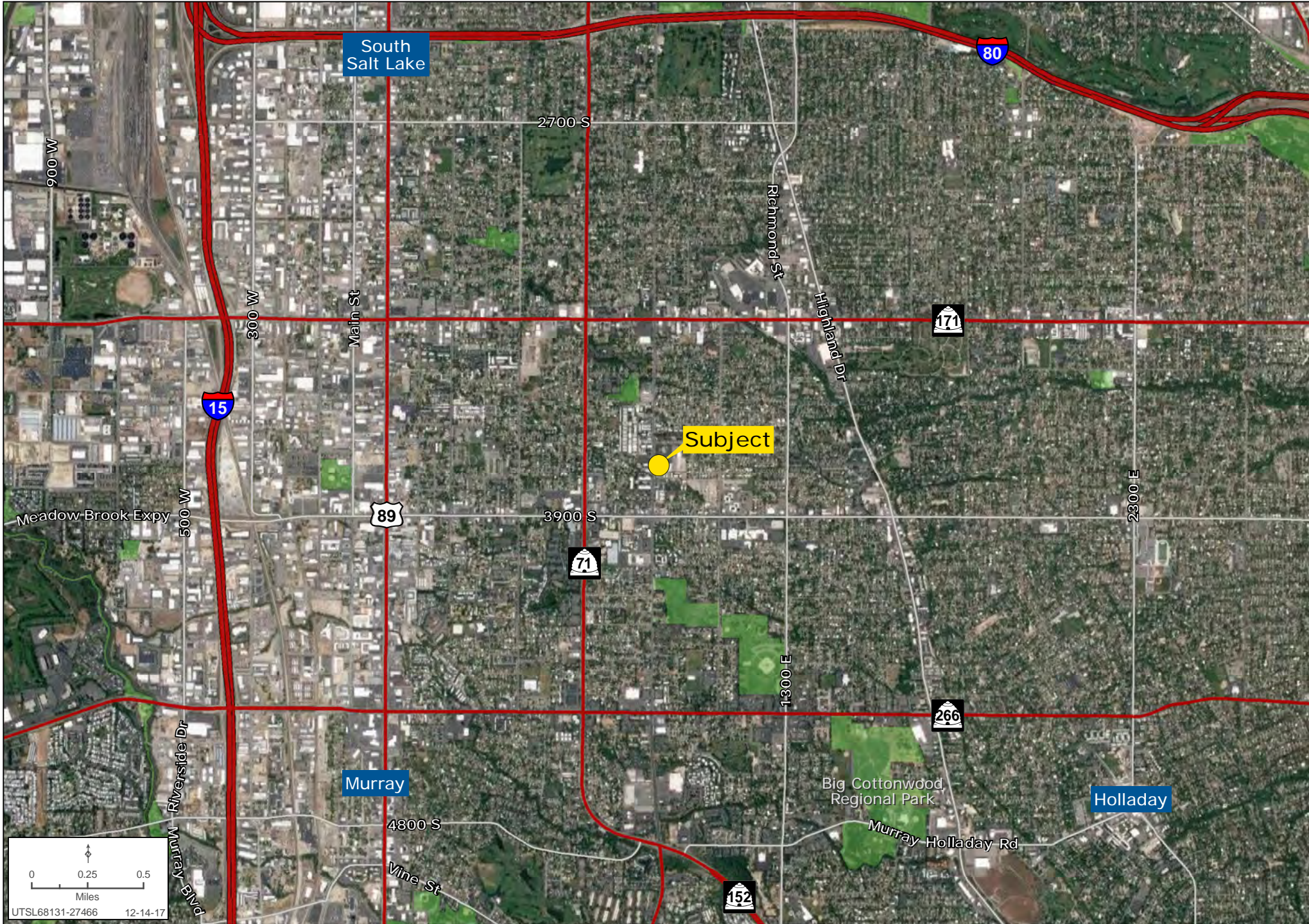
CAMBRIDGE SQUARE 900 E SLC SURROUNDING DEVELOPMENT MAP

Zachary Hartman | 801.573.9181 | www.landadvisors.com



CAMBRIDGE SQUARE 900 E SLC SURROUNDING AREA MAP

Zachary Hartman | 801.573.9181 | www.landadvisors.com



CAMBRIDGE SQUARE 900 E SLC PROPERTY DETAIL MAP

Zachary Hartman | 801.573.9181 | www.landadvisors.com

