

FOR LEASE

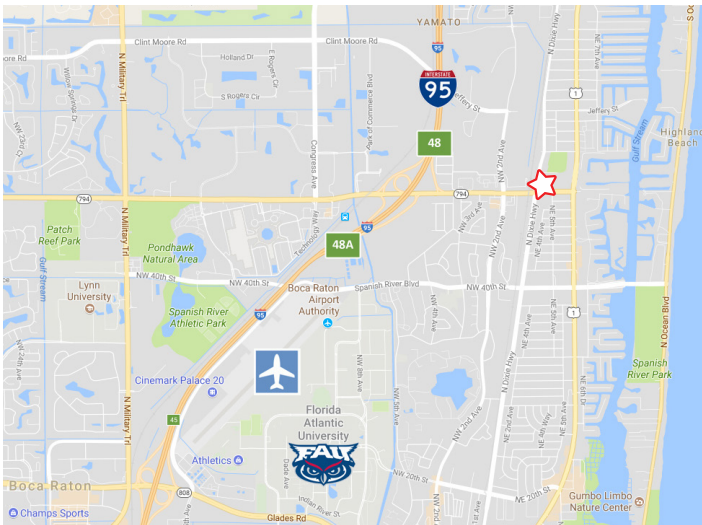
301 EAST YAMATO ROAD
BOCA RATON, FLORIDA 33431



CLASS-A OFFICE SPACE AVAILABLE



FNBCCPLAZA.COM



- NEW OWNERS
- COMPLETE ATRIUM & LOBBY RENOVATIONS UNDERWAY
- 24/7 SECURITY
- ON-SITE BANKING, RESTAURANT AND CAFE
- NEGOTIABLE TENANT IMPROVEMENTS
- LARGE EFFICIENT FLOOR PLATES
- FREE COVERED / GARAGE PARKING
- LANDMARK LOCATION AT YAMATO AND DIXIE HIGHWAY
- LESS THAN ONE MILE EAST OF I-95 AND JUST WEST OF AMENITY-RICH, US HIGHWAY 1



MORNING CALM
ADVISORS

FOR MORE INFORMATION

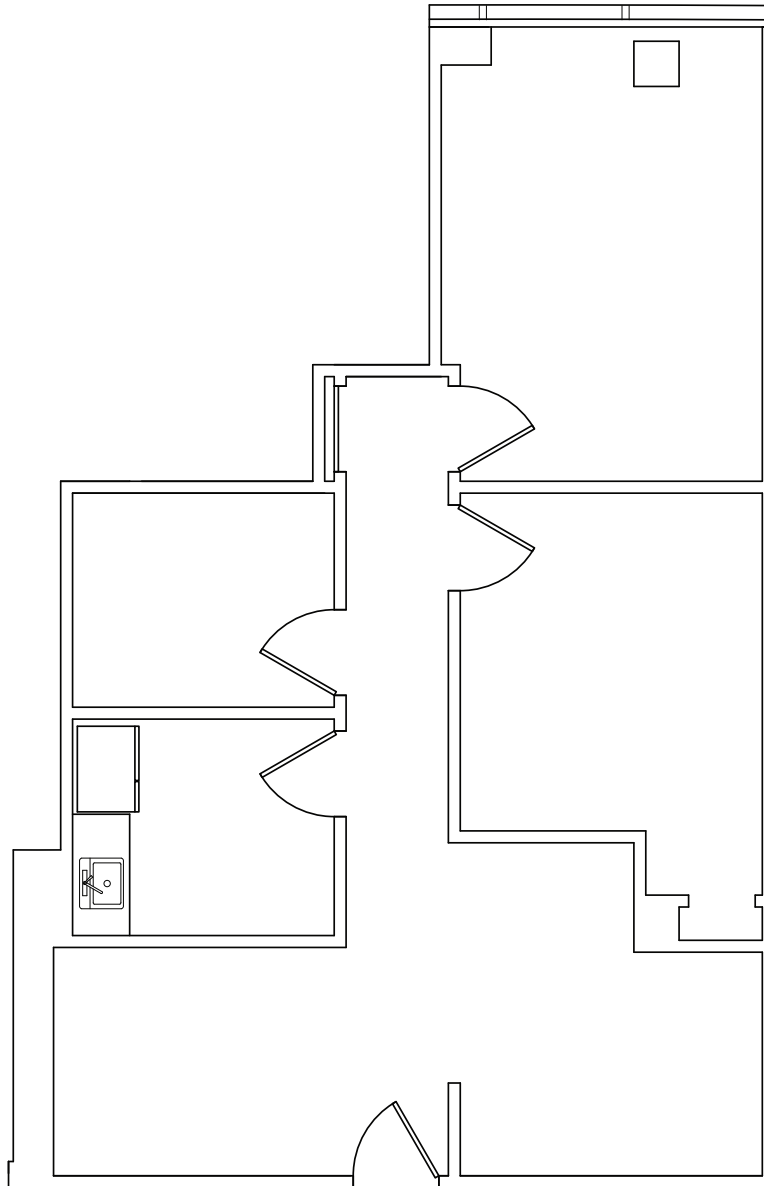
JONATHAN DAVISON, CCIM | DIRECTOR

CELL: (561) 718.7044 | [JDAVISON@MORNING-CALM.COM](mailto:jdavison@morning-calm.com)

MORNING-CALM.COM | 561.383.2400 | 301 YAMATO ROAD, SUITE 4160, BOCA RATON, FL 33431

FNBCC PLAZA @ 301 YAMATO

SUITE 3191 | 965 SQ.FT.



MORNING CALM
ADVISORS

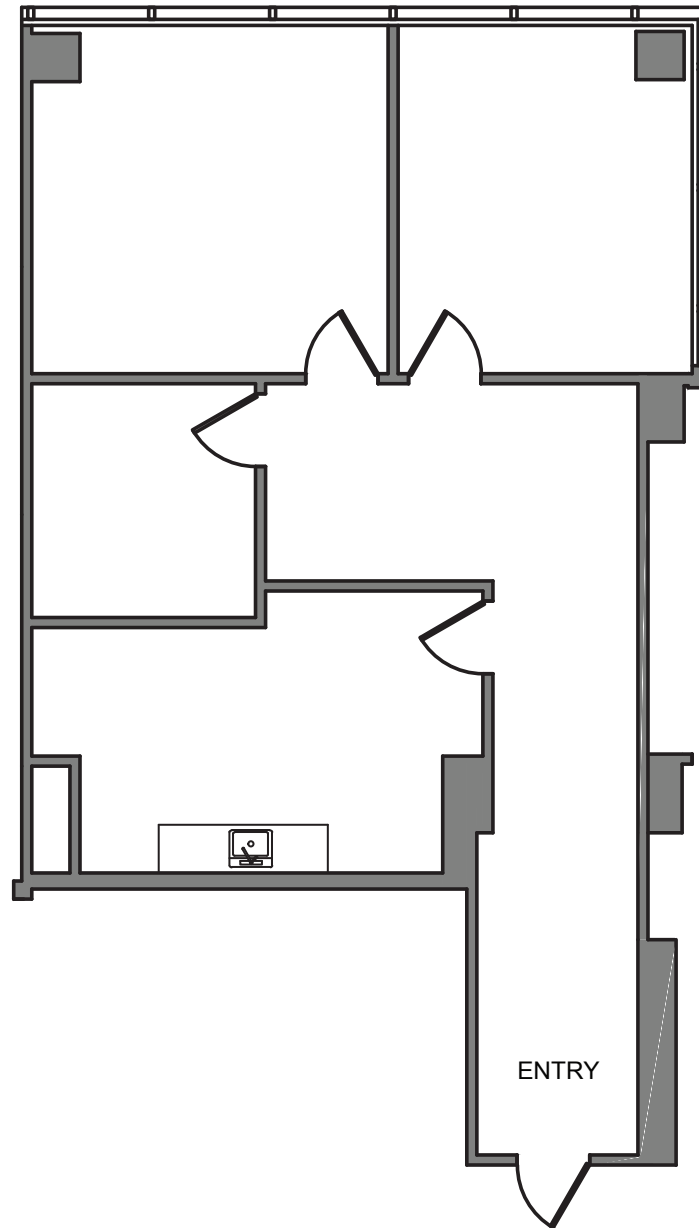
FOR MORE INFORMATION

JONATHAN DAVISON, CCIM | DIRECTOR

CELL: (561) 718.7044 | [JDAVISON@MORNING-CALM.COM](mailto:jdavison@morning-calm.com)

FNBCC PLAZA @ 301 YAMATO

SUITE 1120 | 1,178 SQ.FT.



MORNING CALM
ADVISORS

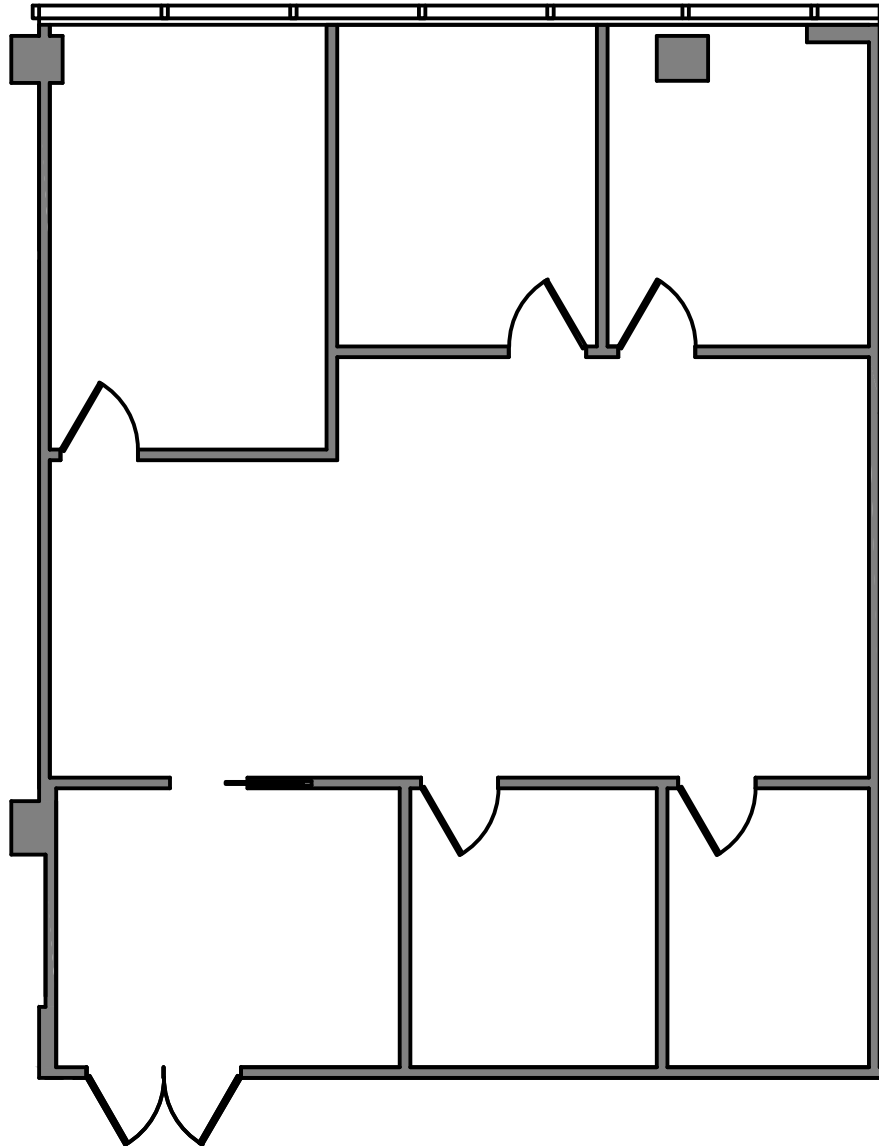
FOR MORE INFORMATION

JONATHAN DAVISON, CCIM | DIRECTOR

CELL: (561) 718.7044 | [JDAVISON@MORNING-CALM.COM](mailto:jdavison@morning-calm.com)

FNBCC PLAZA @ 301 YAMATO

SUITE 4120 | 1,577 SQ.FT.



MORNING CALM
ADVISORS

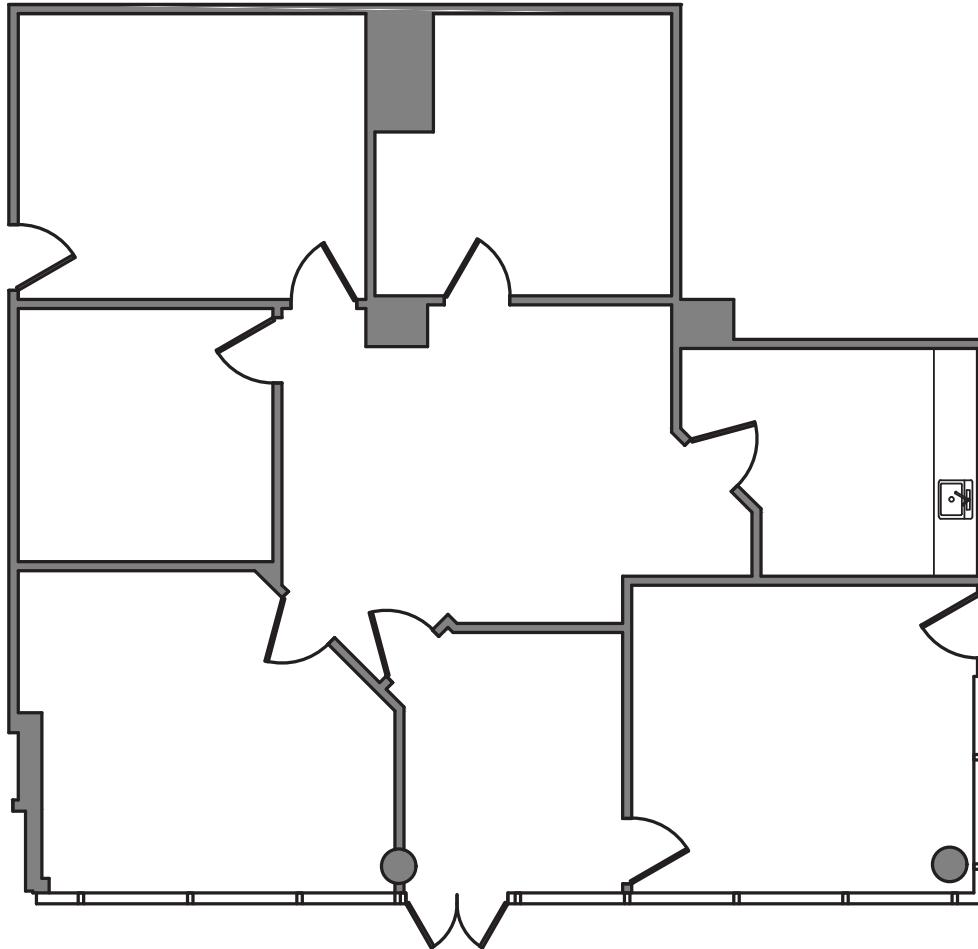
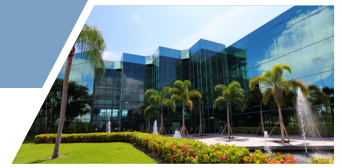
FOR MORE INFORMATION

JONATHAN DAVISON, CCIM | DIRECTOR

CELL: (561) 718.7044 | [JDAVISON@MORNING-CALM.COM](mailto:jdavison@morning-calm.com)

FNBCC PLAZA @ 301 YAMATO

SUITE 2110 | 1,839 SQ.FT.



MORNING CALM
ADVISORS

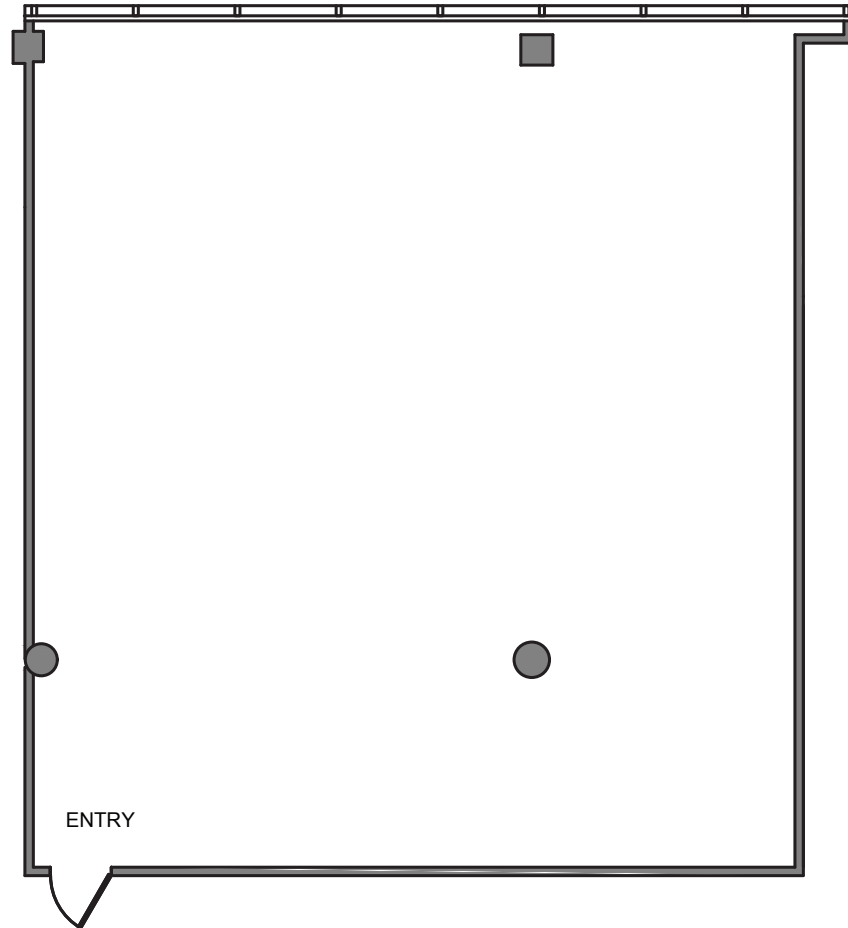
FOR MORE INFORMATION

JONATHAN DAVISON, CCIM | DIRECTOR

CELL: (561) 718.7044 | [JDAVISON@MORNING-CALM.COM](mailto:jdavison@morning-calm.com)

FNBCC PLAZA @ 301 YAMATO

SUITE 3125 | 1,915 SQ.FT.



MORNING CALM
ADVISORS

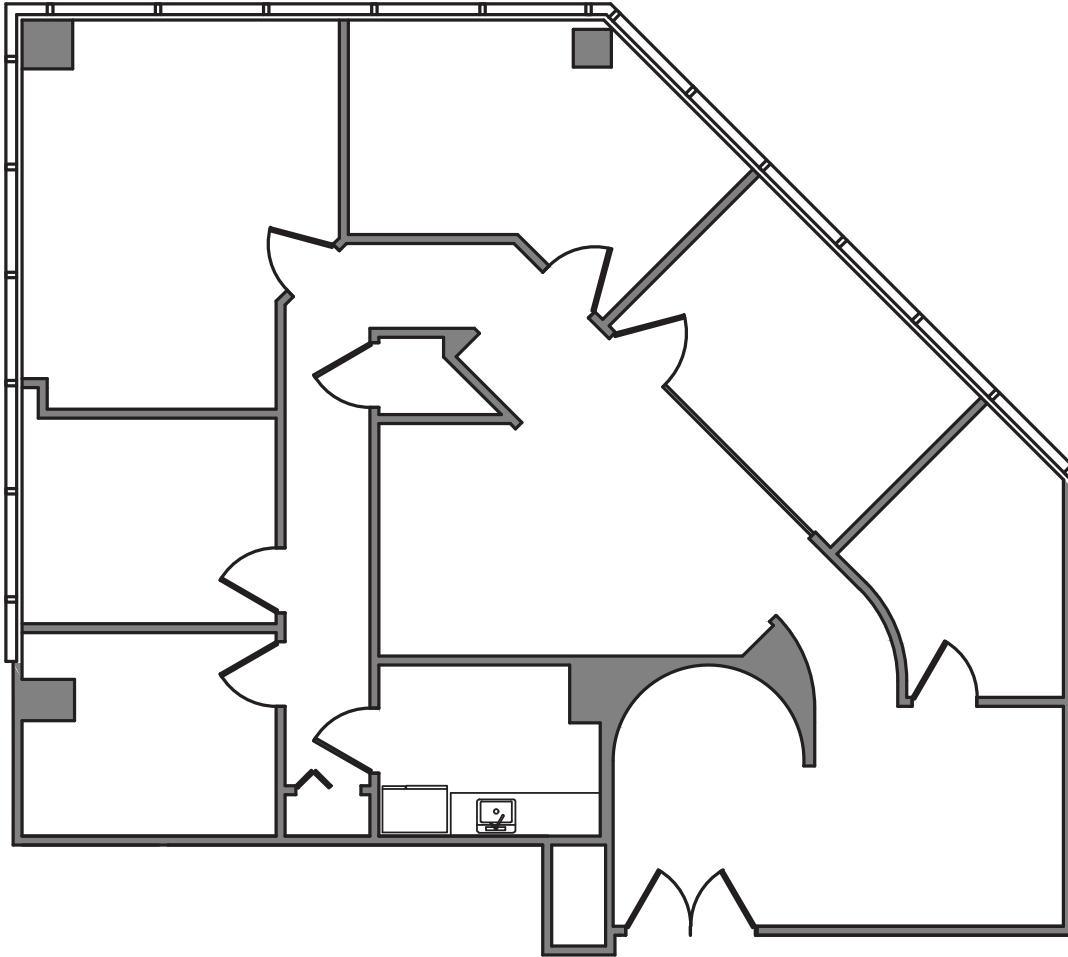
FOR MORE INFORMATION

JONATHAN DAVISON, CCIM | DIRECTOR

CELL: (561) 718.7044 | [JDAVISON@MORNING-CALM.COM](mailto:jdavison@morning-calm.com)

FNBCC PLAZA @ 301 YAMATO

SUITE 2121 | 2,083 SQ.FT.



MORNING CALM
ADVISORS

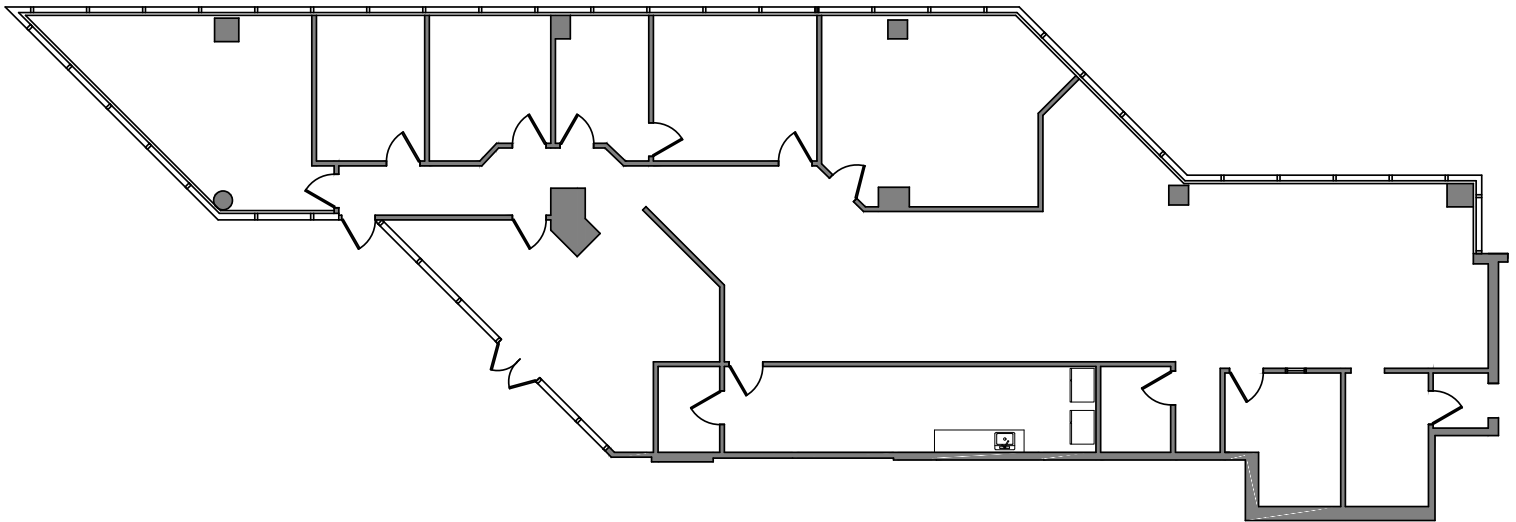
FOR MORE INFORMATION

JONATHAN DAVISON, CCIM | DIRECTOR

CELL: (561) 718.7044 | [JDAVISON@MORNING-CALM.COM](mailto:jdavison@morning-calm.com)

FNBCC PLAZA @ 301 YAMATO

SUITE 1199 | 4,407 SQ.FT.



MORNING CALM
ADVISORS

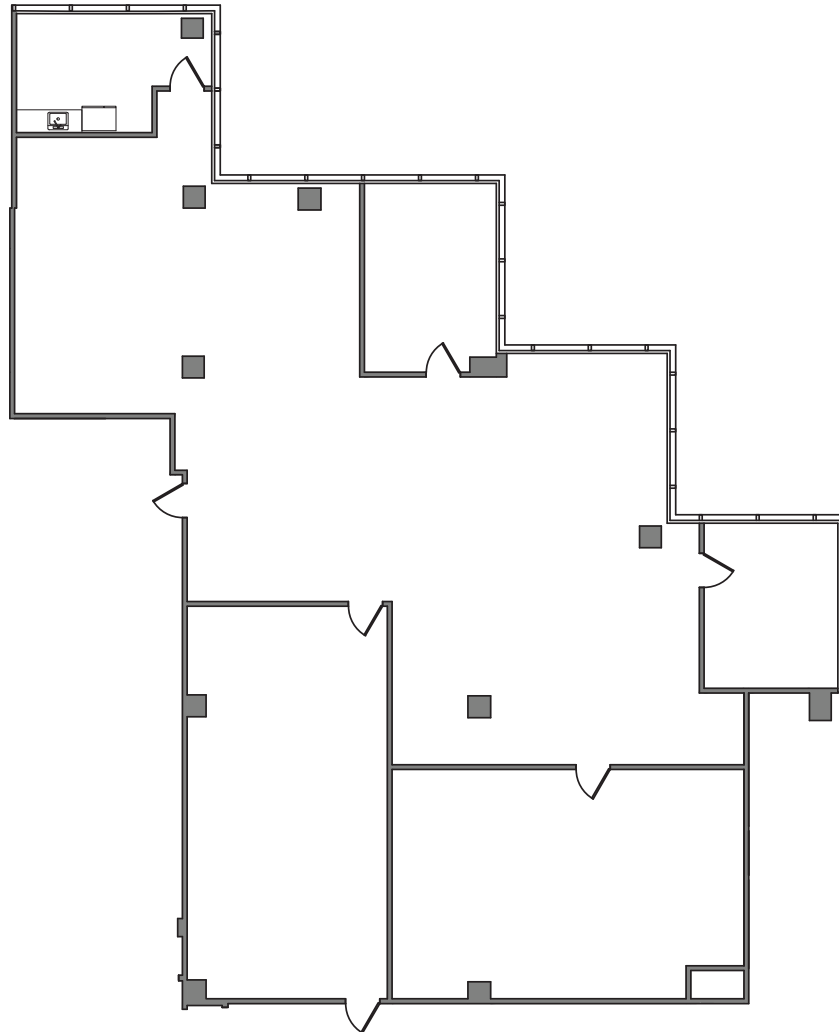
FOR MORE INFORMATION

JONATHAN DAVISON, CCIM | DIRECTOR

CELL: (561) 718.7044 | [JDAVISON@MORNING-CALM.COM](mailto:jdavison@morning-calm.com)

FNBCC PLAZA @ 301 YAMATO

SUITE 2120 | 4,623 SQ.FT.



MORNING CALM
ADVISORS

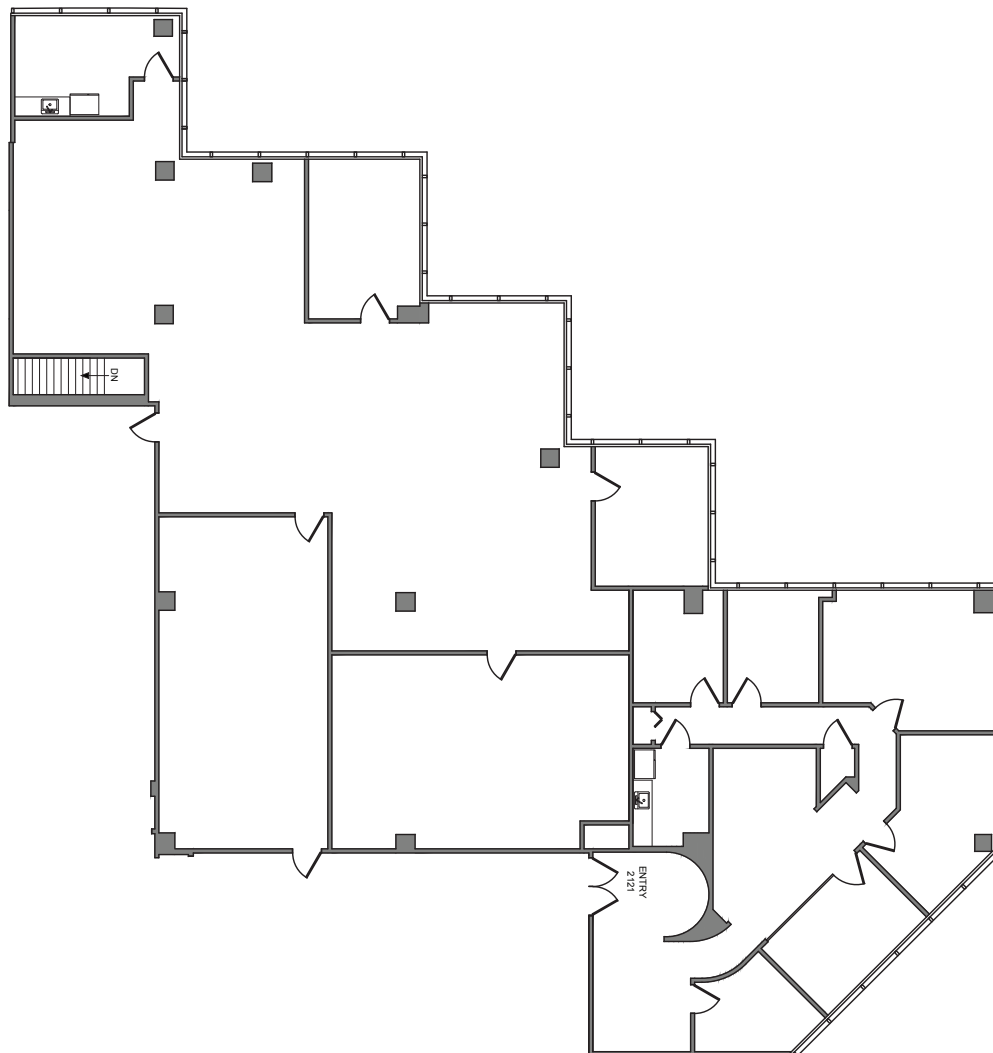
FOR MORE INFORMATION

JONATHAN DAVISON, CCIM | DIRECTOR

CELL: (561) 718.7044 | [JDAVISON@MORNING-CALM.COM](mailto:jdavison@morning-calm.com)

FNBCC PLAZA @ 301 YAMATO

SUITE 2120 - 2121 | 6,706 SQ.FT.



MORNING CALM
ADVISORS

FOR MORE INFORMATION

JONATHAN DAVISON, CCIM | DIRECTOR

CELL: (561) 718.7044 | [JDAVISON@MORNING-CALM.COM](mailto:jdavison@morning-calm.com)

FNBCC PLAZA @ 301 YAMATO

SUITE 3200 | 25,502 SQ.FT.



MORNING CALM
ADVISORS

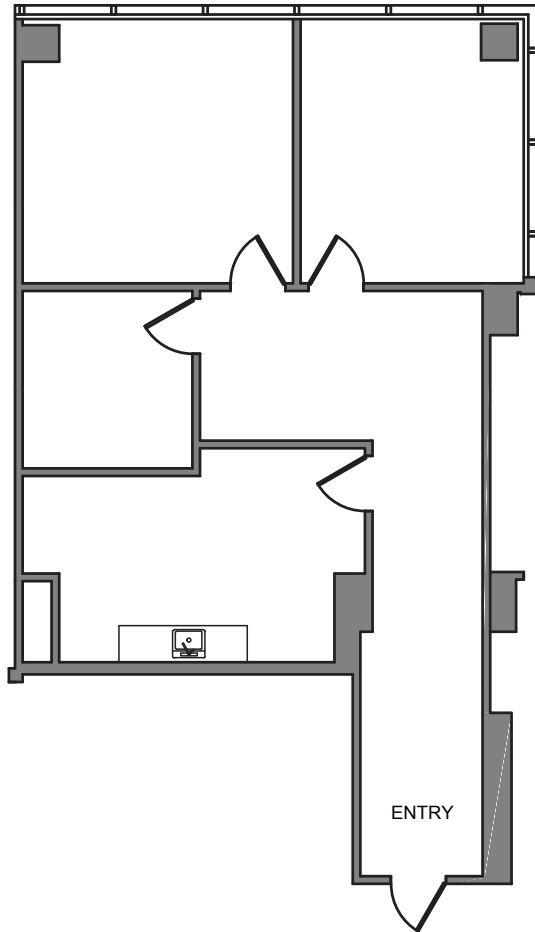
FOR MORE INFORMATION

JONATHAN DAVISON, CCIM | DIRECTOR

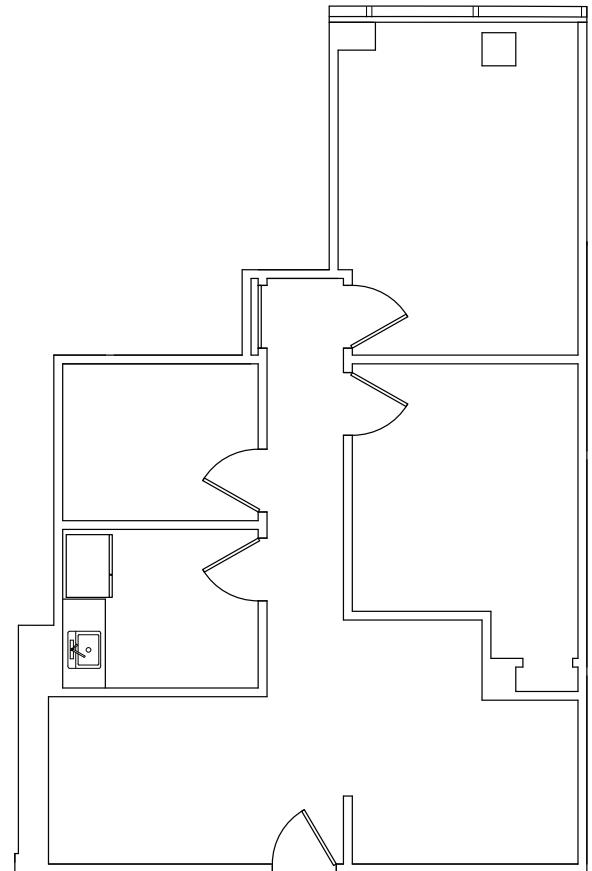
CELL: (561) 718.7044 | [JDAVISON@MORNING-CALM.COM](mailto:jdavison@morning-calm.com)

FNBCC PLAZA @ 301 YAMATO

SMALL SUITES AVAILABLE FOR IMMEDIATE OCCUPANCY



SUITE 3194
1,178 SF
\$3,288/MO



SUITE 3191
965 SF
\$2,693/MO



MORNING CALM
ADVISORS

FOR MORE INFORMATION

JONATHAN DAVISON, CCIM | DIRECTOR

CELL: (561) 718.7044 | [JDAVISON@MORNING-CALM.COM](mailto:jdavison@morning-calm.com)