

322 W. LINCOLN AVENUE
ROYAL OAK, MICHIGAN

OFFICE FOR LEASE
5,738 - 11,476 Square Feet Available



**SIGNATURE
ASSOCIATES**
KNOW SIGNATURE | KNOW RESULTS



PROPERTY FEATURES

- 5,738 - 11,476 square feet available
- Fantastic opportunity in downtown Royal Oak
- Stand-alone building with signage available
- Zoned CBD
- (19) on-site parking spaces and (25) parking spaces across the street
- Lease Rate: \$20.25/sq. ft. G+U+J
- \$13.50/sq. ft. NNN lease rate can be available



For more information, please contact:

DAVE GREEN
(248) 948 4184
dgreen@signatureassociates.com

DAVE MILLER
(248) 948 4183
dmiller@signatureassociates.com

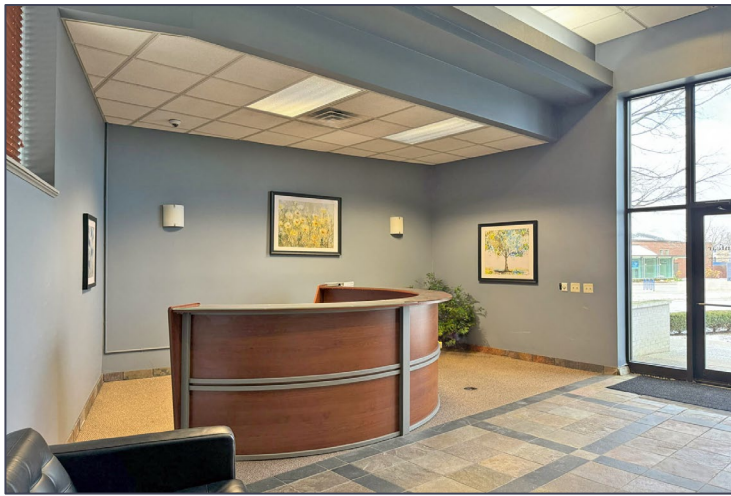
SIGNATURE ASSOCIATES
One Towne Square, Suite 1200
Southfield, MI 48076
www.signatureassociates.com

322 W. Lincoln Avenue – Royal Oak, Michigan

Office For Lease

5,738 - 11,476
Square Feet
AVAILABLE

Interior Photos



For more information, please contact:

DAVE GREEN
(248) 948 4184
dgreen@signatureassociates.com

DAVE MILLER
(248) 948 4183
dmiller@signatureassociates.com

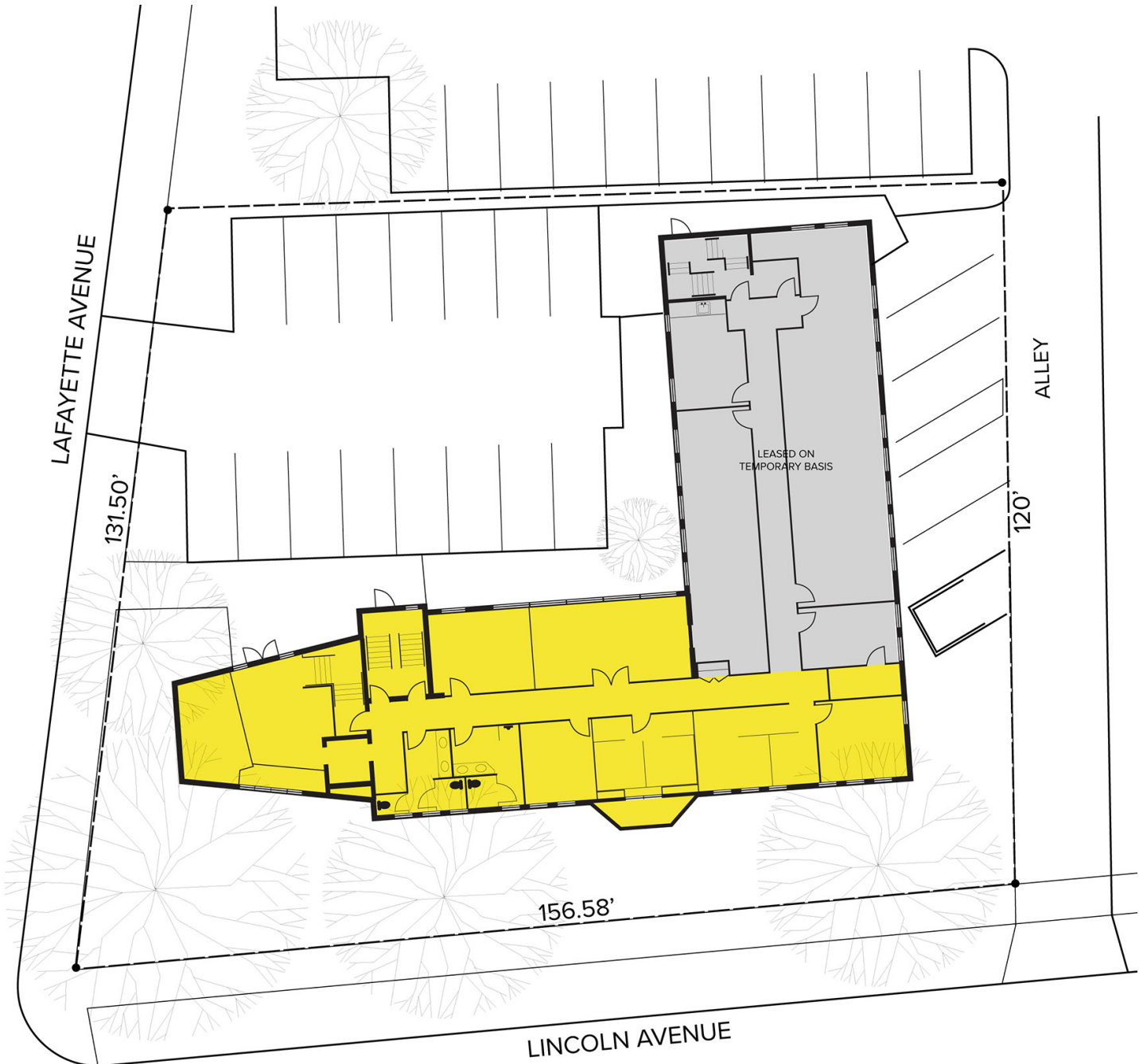
SIGNATURE ASSOCIATES
One Towne Square, Suite 1200
Southfield, MI 48076
www.signatureassociates.com

322 W. Lincoln Avenue – Royal Oak, Michigan

Office For Lease

5,738 - 11,476
Square Feet
AVAILABLE

Floor Plan – First Floor



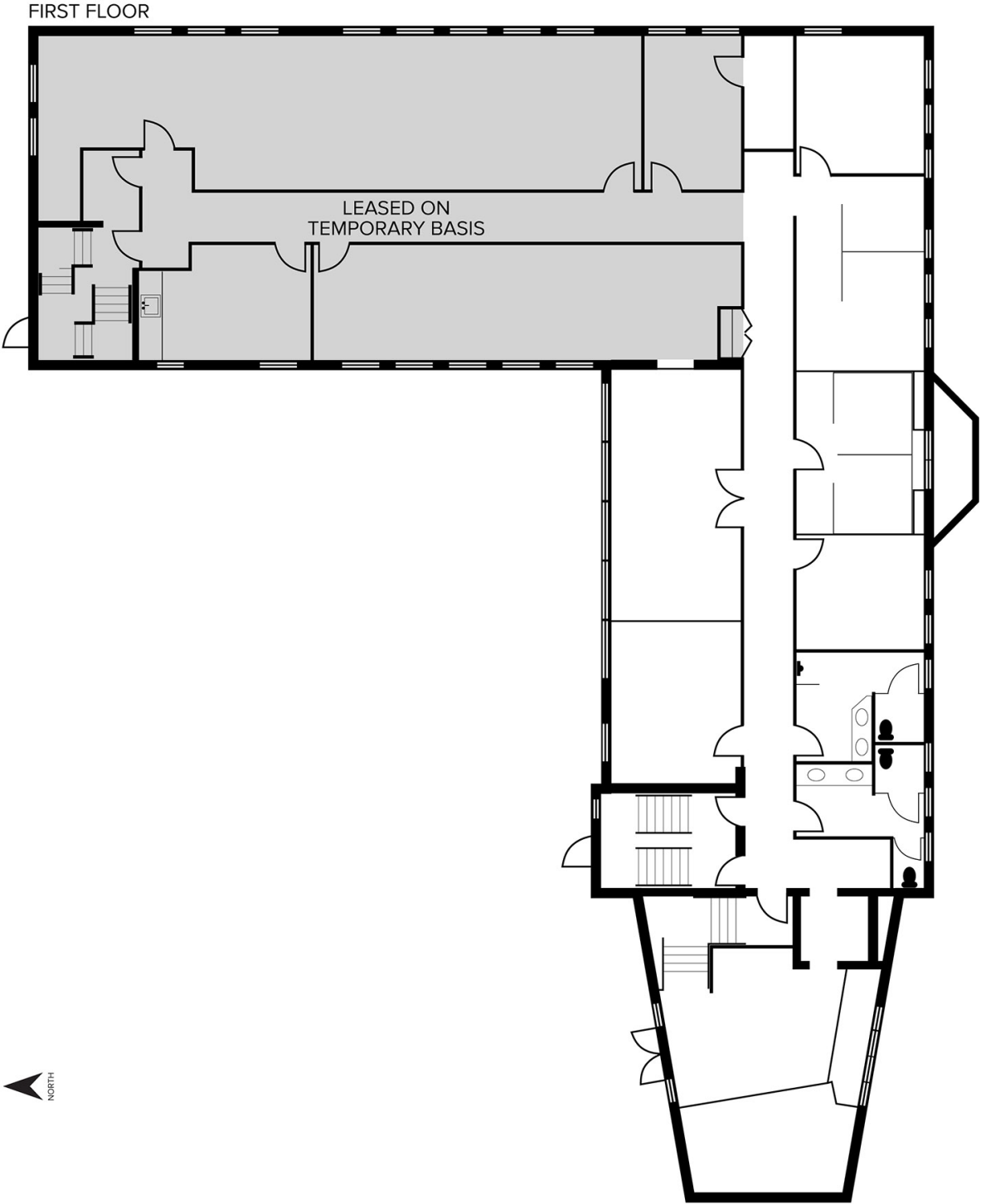
For more information, please contact:

DAVE GREEN
(248) 948 4184
dgreen@signatureassociates.com

DAVE MILLER
(248) 948 4183
dmiller@signatureassociates.com

SIGNATURE ASSOCIATES
One Towne Square, Suite 1200
Southfield, MI 48076
www.signatureassociates.com

Floor Plan – First Floor



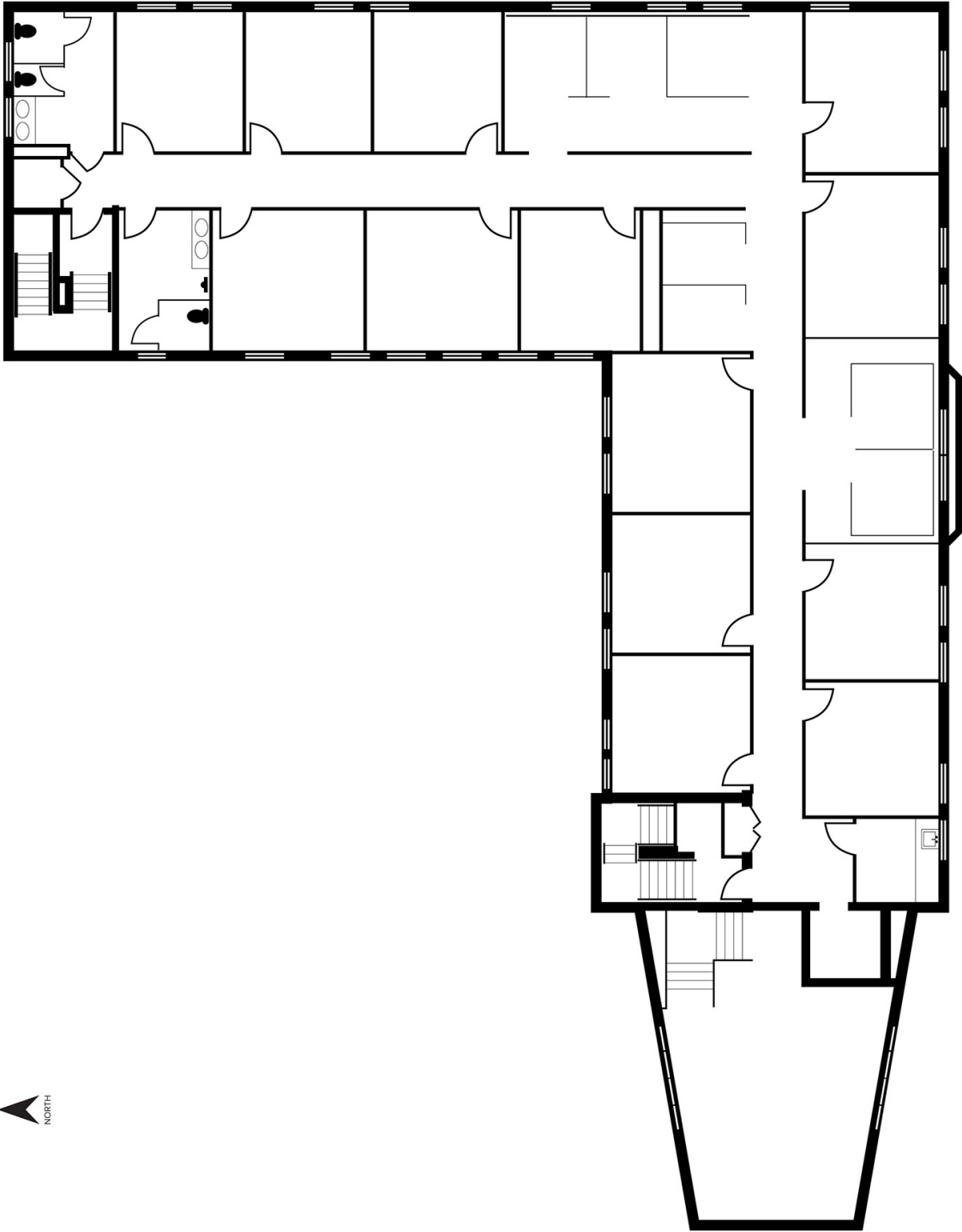
For more information, please contact:

DAVE GREEN
(248) 948 4184
dgreen@signatureassociates.com

DAVE MILLER
(248) 948 4183
dmiller@signatureassociates.com

SIGNATURE ASSOCIATES
One Towne Square, Suite 1200
Southfield, MI 48076
www.signatureassociates.com

Floor Plan – Second Floor



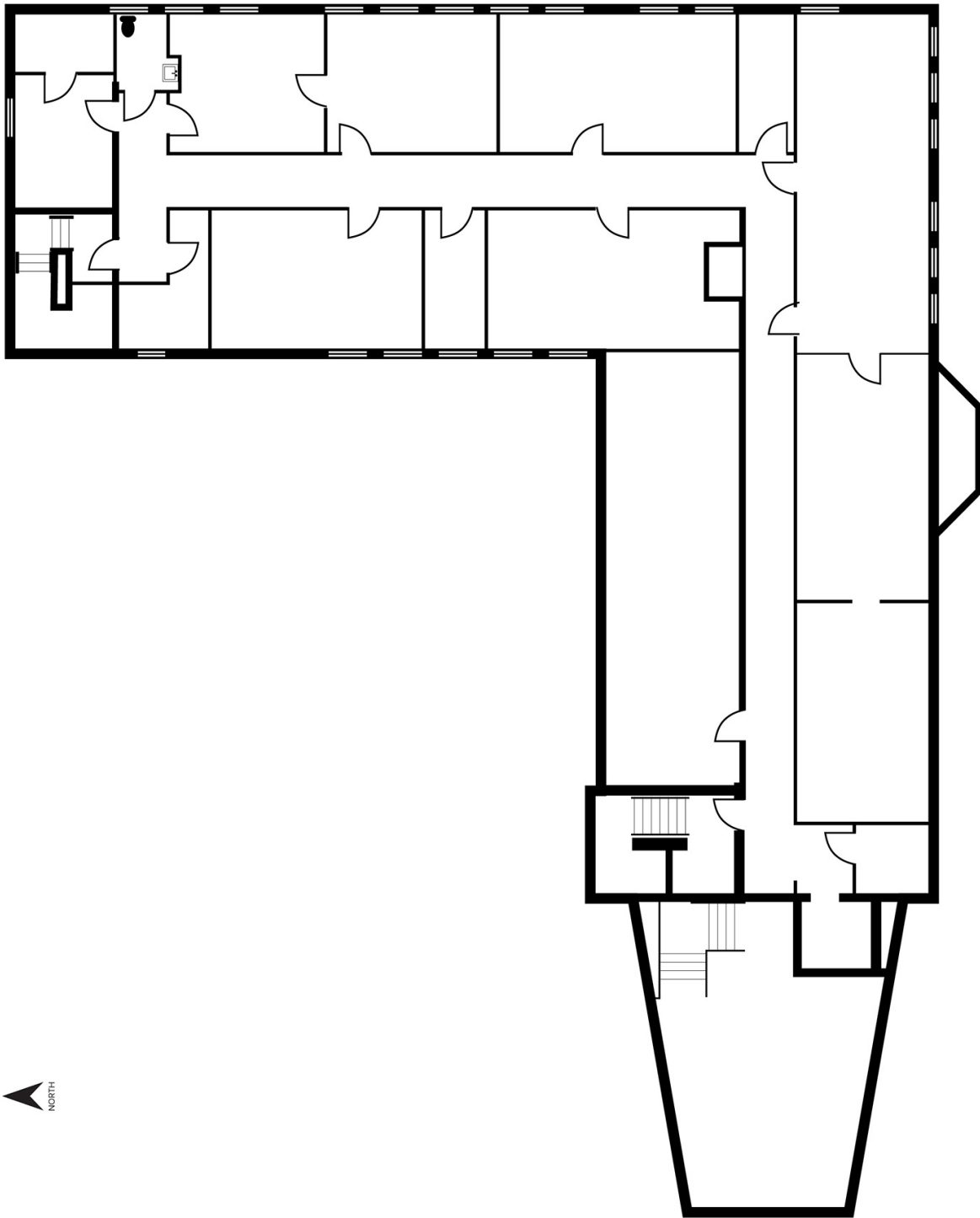
For more information, please contact:

DAVE GREEN
(248) 948 4184
dgreen@signatureassociates.com

DAVE MILLER
(248) 948 4183
dmiller@signatureassociates.com

SIGNATURE ASSOCIATES
One Towne Square, Suite 1200
Southfield, MI 48076
www.signatureassociates.com

Floor Plan – Basement



For more information, please contact:

DAVE GREEN
(248) 948 4184
dgreen@signatureassociates.com

DAVE MILLER
(248) 948 4183
dmiller@signatureassociates.com

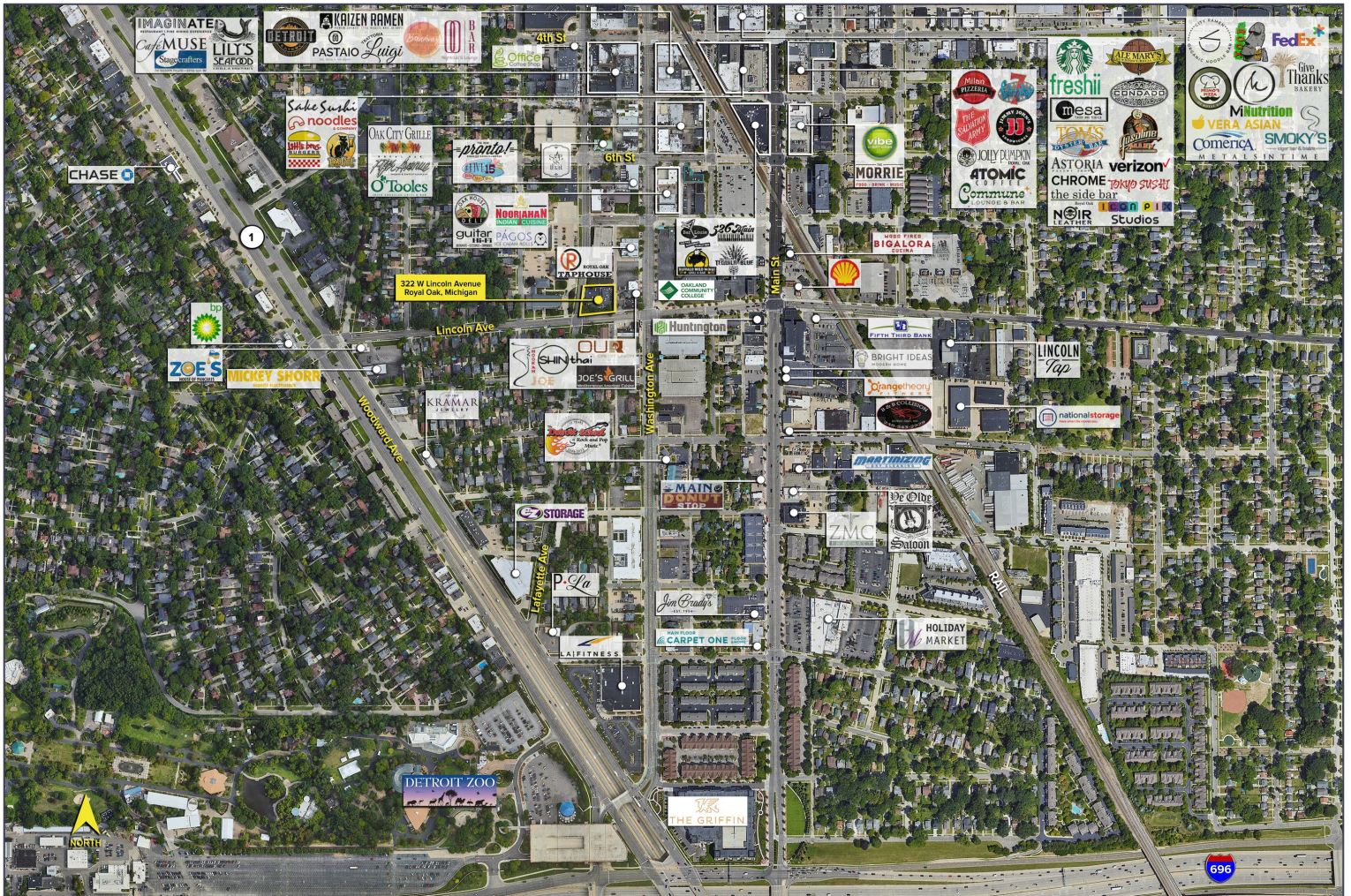
SIGNATURE ASSOCIATES
One Towne Square, Suite 1200
Southfield, MI 48076
www.signatureassociates.com

322 W. Lincoln Avenue – Royal Oak, Michigan

Office For Lease

5,738 - 11,476
Square Feet
AVAILABLE

Aerial



For more information, please contact:

DAVE GREEN
(248) 948 4184
dgreen@signatureassociates.com

DAVE MILLER
(248) 948 4183
dmiller@signatureassociates.com

SIGNATURE ASSOCIATES
One Towne Square, Suite 1200
Southfield, MI 48076
www.signatureassociates.com