

The logo consists of the letters 'INS' in a white, serif font, centered within a black square that has a green border. The background of the entire advertisement is a photograph of a multi-story brick office building with large glass windows, set against a clear blue sky. Some trees with yellowing leaves are visible in the foreground on the left side.

INS

---

# ISAAC NEWTON SQUARE

---

1925 & 1943  
RESTON, VA 20190


FOR LEASE

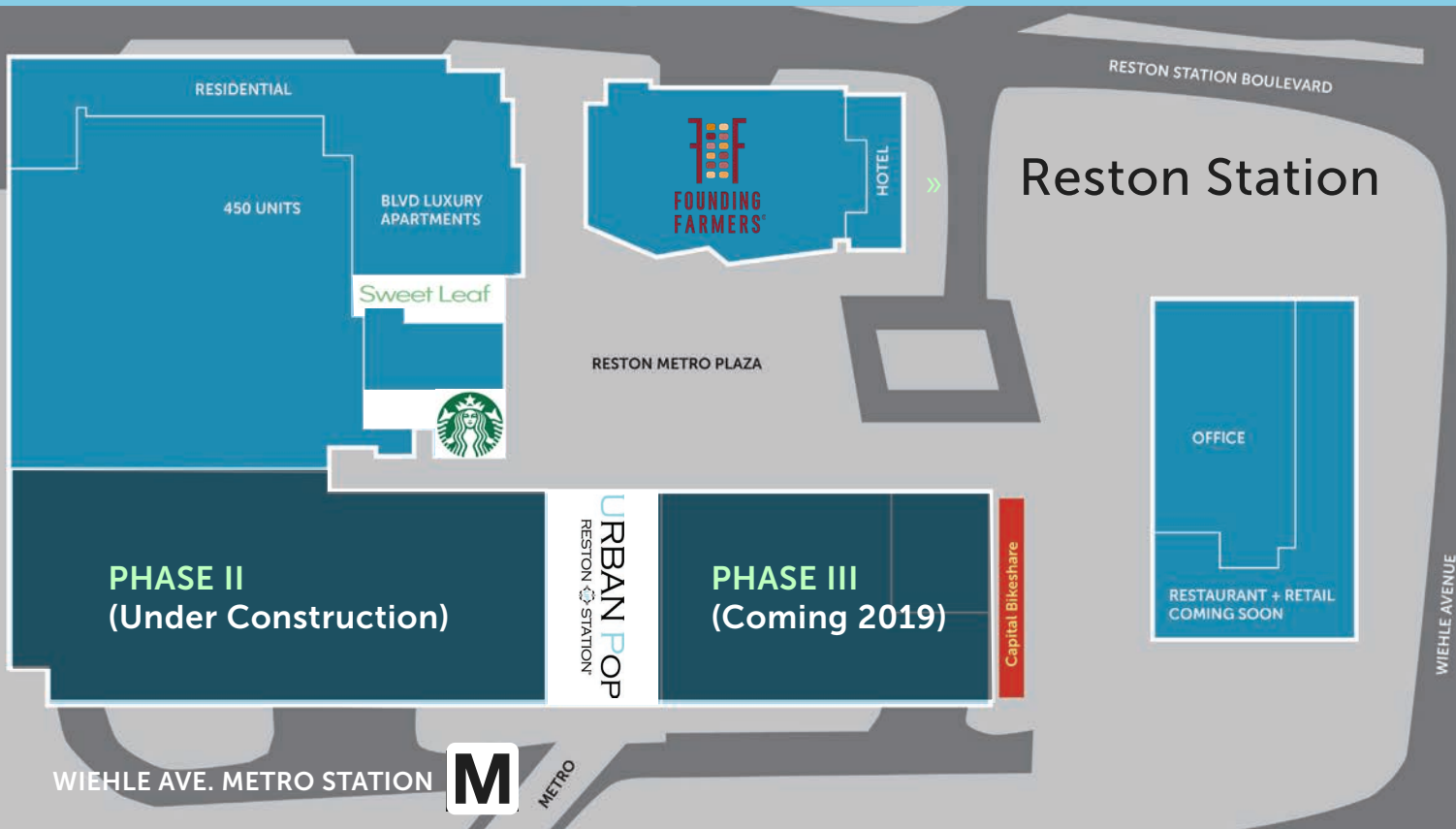
---

48,582 SF











 TRANSWESTERN®

# HIGHLIGHTS

- » Immediate access to **Dulles Toll Road**
- » 5 min. walk to **Reston Station**
- » 7 min. walk to **Wiehle Ave. Metro Station** 
- » On-site property management, deli, bank, fitness facility and day care services
- » Parking ratio of **3.9 : 1,000 SF**



# NEARBY AMENITIES

1. 
2. 
3. 
4. 
5. 
6. 
7. 
8. 
9. 
10. 



1925

1943

1

2

3

4

5

6

7-10



7 MINUTE  
WALK TO  
METRO



WIEHLE AVE. METRO STATION

DULLES TOLL RD

267

SUNSET HILLS RD

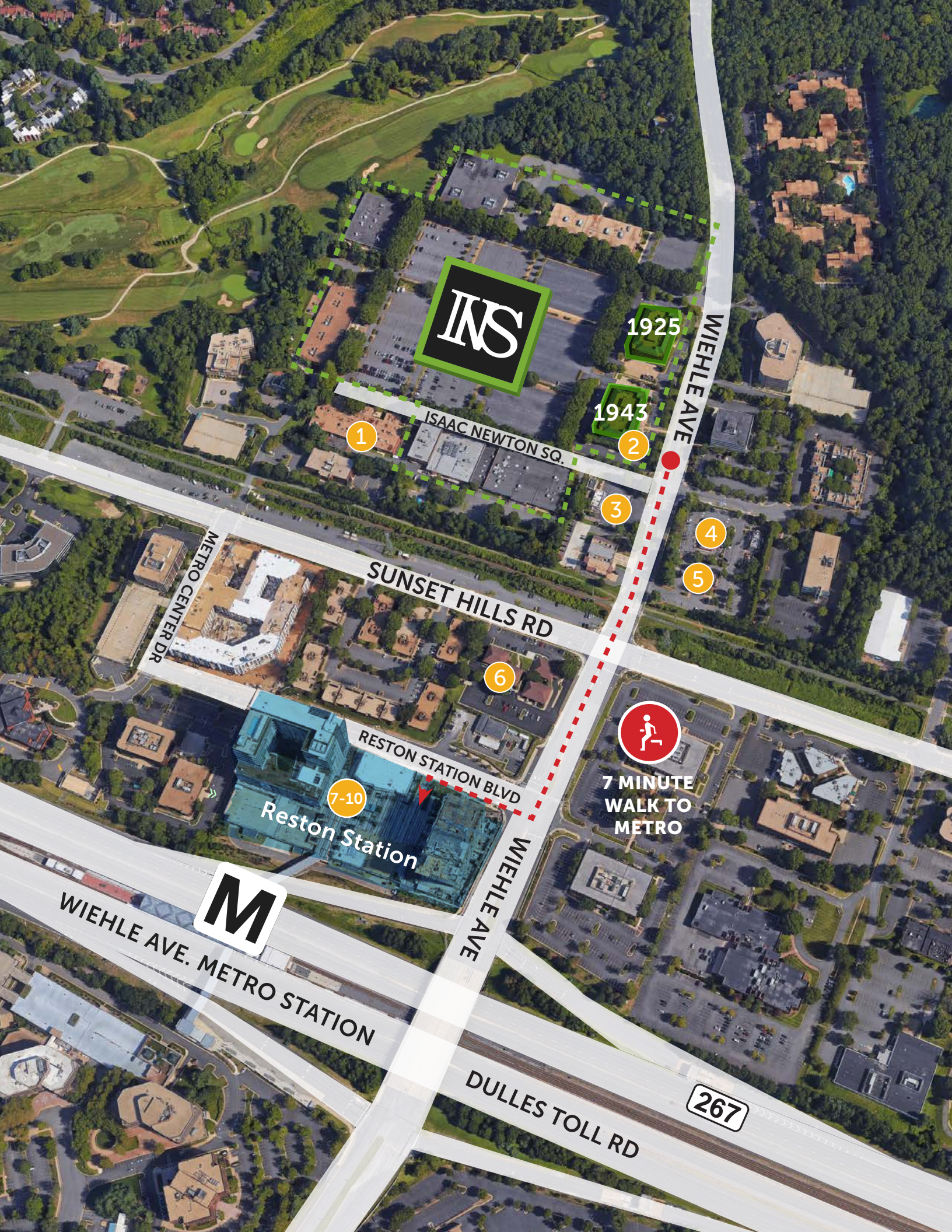
RESTON STATION BLVD

Reston Station

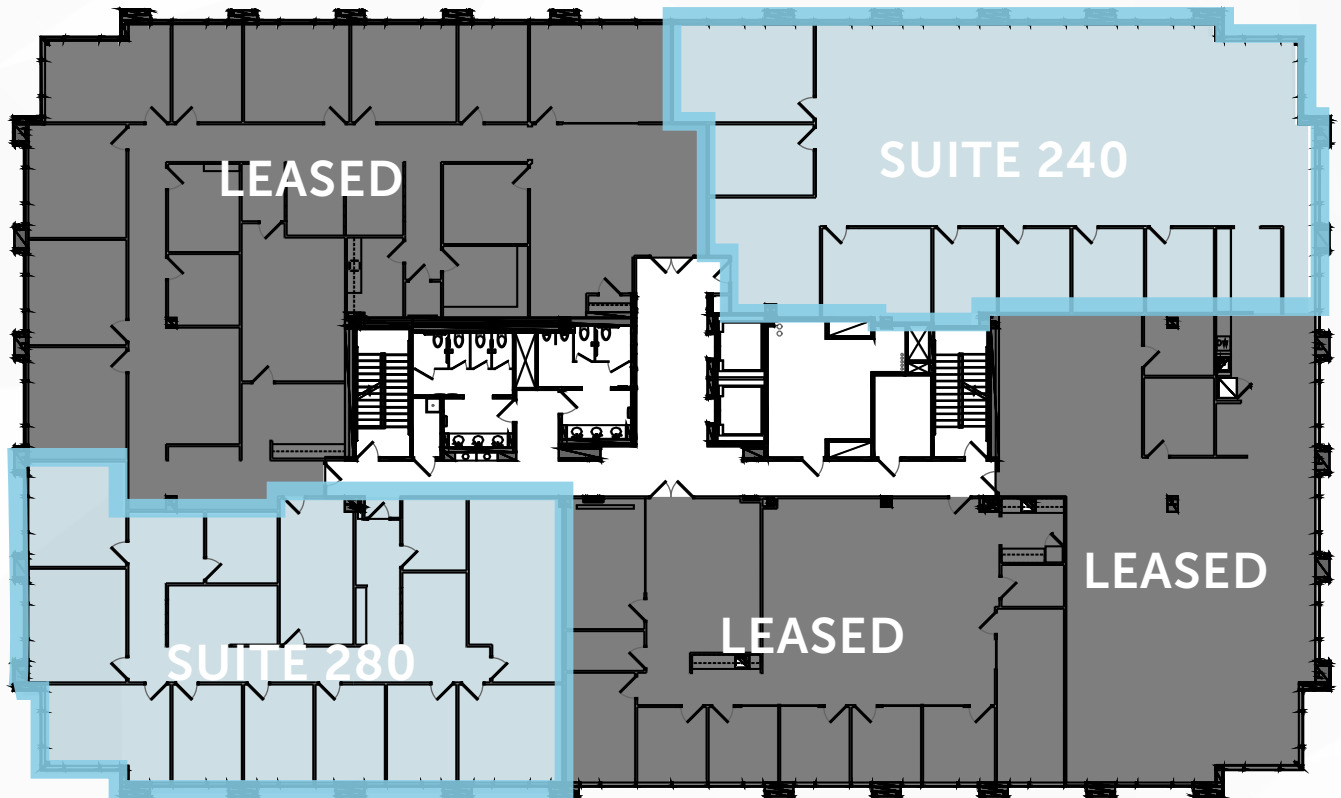
ISAAC NEWTON SQ.

WIEHLE AVE

METRO CENTER DR



# AVAILABILITIES



1925 Isaac Newton Square

SUITE	SF	Date Available
240	4,157 RSF	Immediately
280	3,500 RSF	Immediately



# AVAILABILITIES

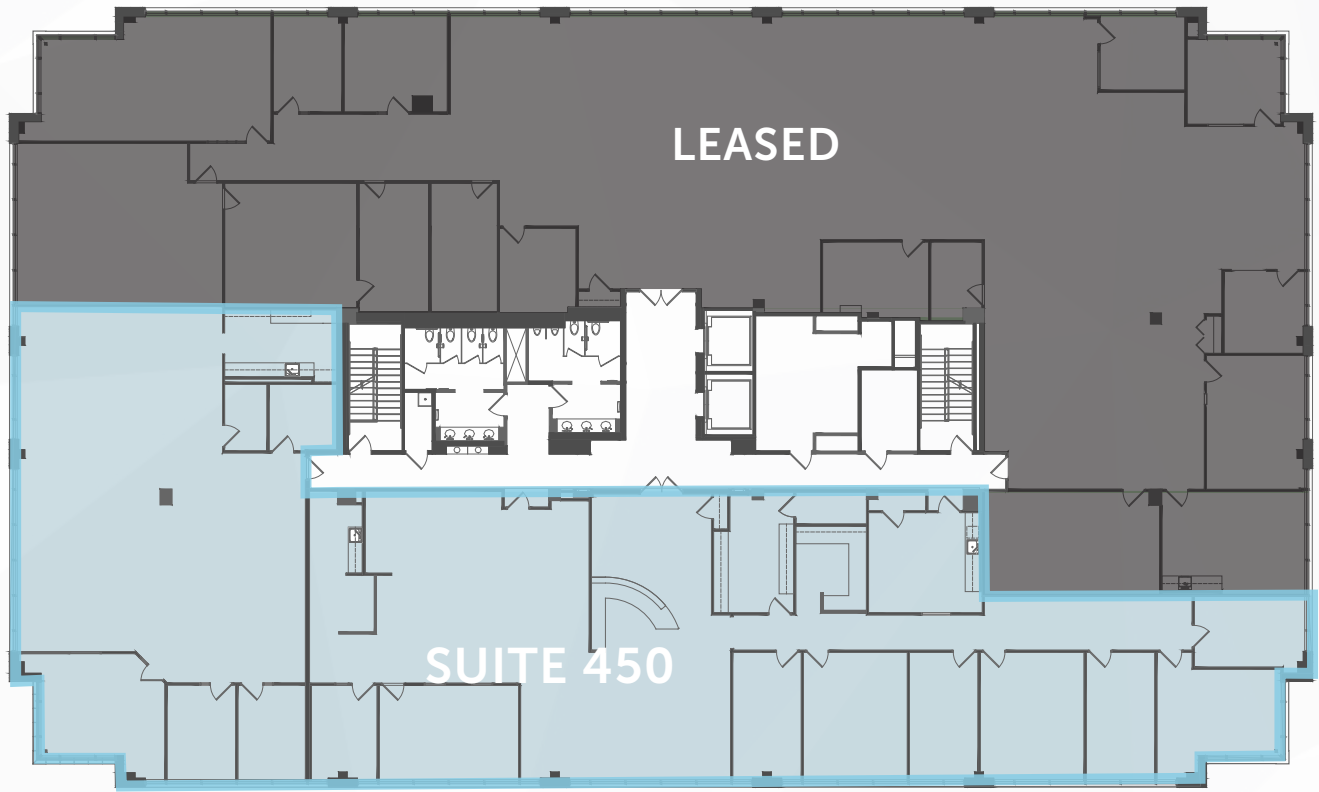


1925 Isaac Newton Square

<b>SUITE</b>	<b>SF</b>	<b>Date Available</b>
300 (Entire 3rd Floor)	19,644 RSF	Immediately



# AVAILABILITIES



1925 Isaac Newton Square

<b>SUITE</b>	<b>SF</b>	<b>Date Available</b>
450	9,509 RSF	Immediately



# AVAILABILITIES



1943 Isaac Newton Square

<b>SUITE</b>	<b>SF</b>	<b>Date Available</b>
240	6,039 RSF	September 2020
260	5,543 RSF	September 2020





---

# ISAAC NEWTON SQUARE

---

**1925 & 1943**  
RESTON, VA 20190

**FOR LEASING INFORMATION CONTACT:**

**CAULLEY DERINGER**

703.749.9415  
caulley.deringer@transwestern.com

**STEVE CLOUD**

703.749.9455  
stephen.cloud@transwestern.com

**ANDREW HASSETT**

703.749.9467  
andrew.hassett@transwestern.com



---

7900 Tysons One Place, Suite 600  
McLean, VA 22102  
703.821.0040  
www.transwestern.com