

54500 GRAND RIVER AVE.
LYON TWP., MICHIGAN

VACANT LAND FOR SALE
30.74 Acres Available



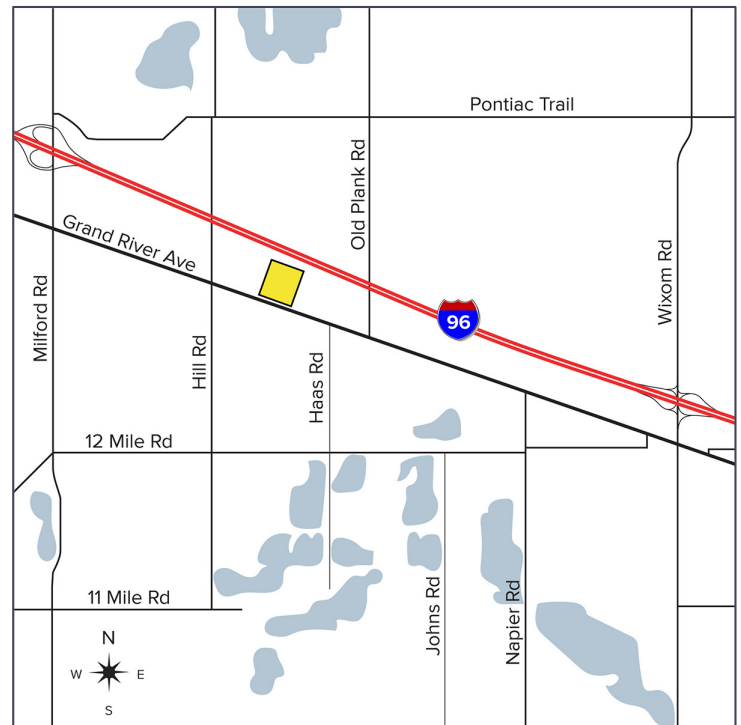
**SIGNATURE
ASSOCIATES**
KNOW SIGNATURE | KNOW RESULTS

EXCITING DEVELOPMENT OPPORTUNITY



PROPERTY FEATURES

- 30.74 acres available
- Zoned Light Industrial
- Can subdivide
- One of the last large tracks in Western Oakland County
- 100% usable
- I-96 and Grand River Frontage
- Can build up to 950,000 square feet
- Sale Price: \$6,762,800 (\$220,000/acre)



For more information, please contact:

JIM MONTGOMERY
(248) 359 0614
jmontgomery@signatureassociates.com

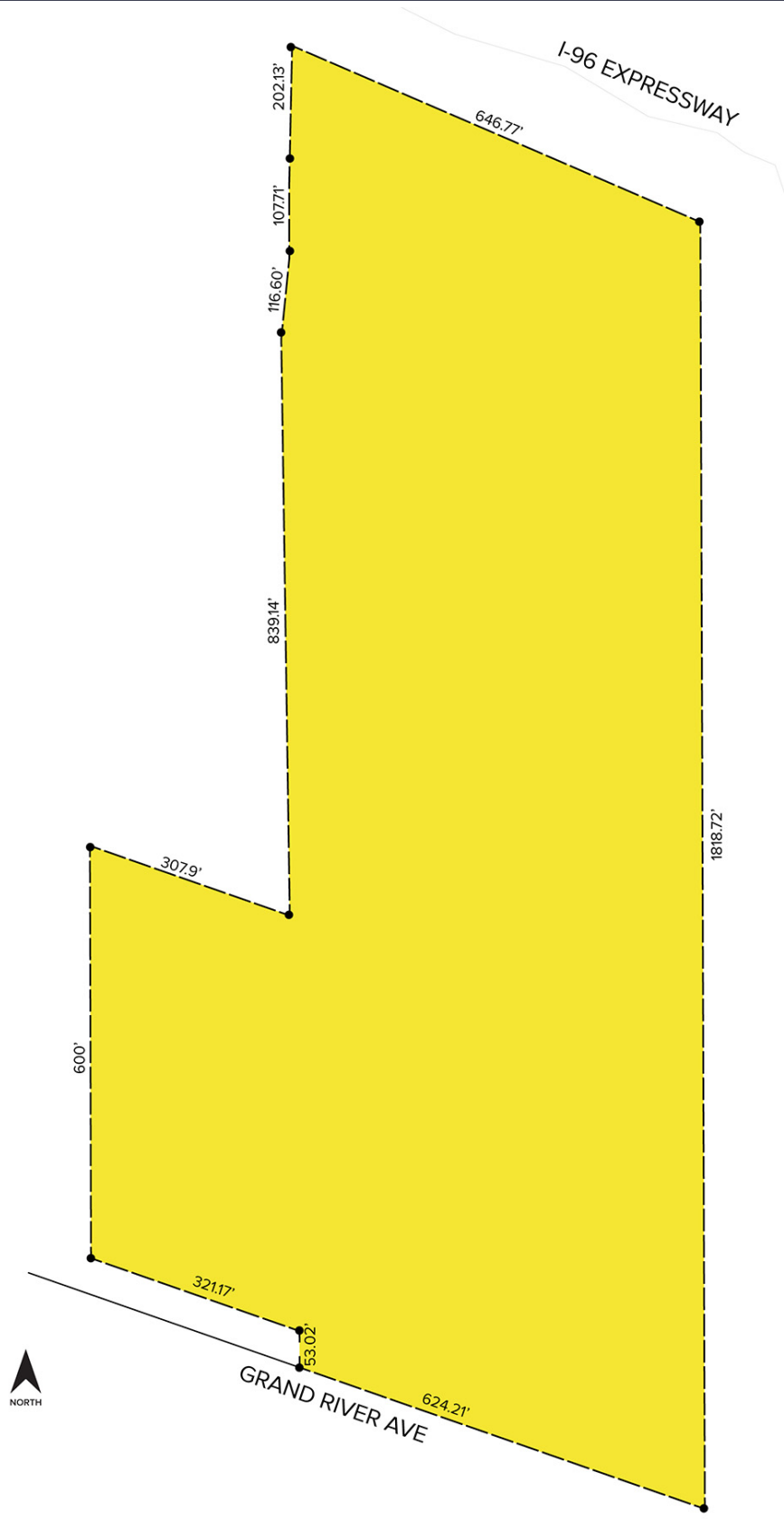
SIGNATURE ASSOCIATES
One Towne Square, Suite 1200
Southfield, MI 48076
www.signatureassociates.com

54500 Grand River Ave. – Lyon Twp., Michigan

Land For Sale

30.74
Acres
AVAILABLE

Site Plan



For more information, please contact:

JIM MONTGOMERY
(248) 359 0614
jmontgomery@signatureassociates.com

SIGNATURE ASSOCIATES
One Towne Square, Suite 1200
Southfield, MI 48076
www.signatureassociates.com