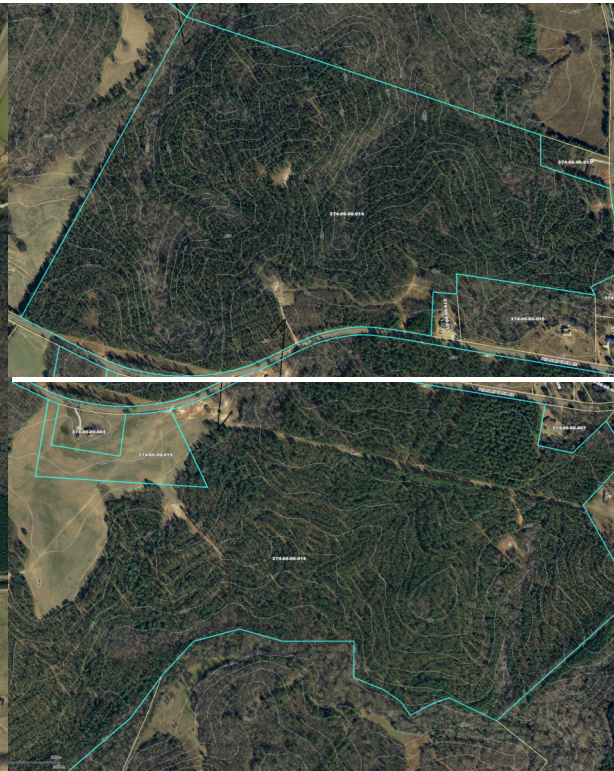


339± Acres of Forested Land

Pearlie Farm Road | Woodruff, SC 29388

For Sale
\$10,000/per acre



This land is 9 minutes from I-385 and 30 minutes from GSP Airport. The property has utilities and can be developed for subdivision, industrial, hunting, or camping.

- 30 years of forest growth
- Pearlie Farm road splits acreage
- Laurens County
- Tax Map#: [374-00-00-014](#), [374-00-00-015](#)
- 4,273 ft. road frontage
- Gently Sloping Topography
- No land zoning required
- Laurens Electric Cooperative/ Piedmont Rural Tel Co.
- Laurens County Water
- 9 Minutes to I-385/ 11 Minutes to Fountain Inn



Ernest Crosby

Commercial Real Estate Sales
ECrosby@JoynerCommercial.com
864-245-2293
www.JoynerCommercial.com



**BERKSHIRE
HATHAWAY**
HomeServices

C. Dan Joyner, REALTORS®

COMMERCIAL DIVISION

24 Vardry Street, Ste. 401 Greenville, SC 29601

©2019 BHH Affiliates, LLC. Real Estate Brokerage Services are offered through the network member franchisees of BHH Affiliates, LLC. Most franchisees are independently owned and operated. Berkshire Hathaway HomeServices and the Berkshire Hathaway HomeServices symbol are registered service marks of HomeServices of America, Inc.® Information not verified or guaranteed. If your property is currently listed with a Broker, this is not intended as a solicitation.