

FOR LEASE OR SALE

THE MERIT BUILDING

615 SOUTH 9TH STREET

Tacoma, Washington



BUILDING DETAILS

- + ±27,000 RSF
- + 3 stories, ±9,000 SF floor plates
- + 124 total parking stalls (4.6/1,000)
 - 48 stalls on the upper level
 - 76 covered, secure stalls below building
 - Rate is negotiable
 - Free visitor parking
- + New roof, HVAC system, electrical service to each floor, thermal insulation, restroom finishes and fixtures
- + Building signage available on South 9th and G Streets
- + High-speed fiber internet



SUITE INFORMATION

- + 2nd and 3rd floors available for lease, ±2,500 - 18,000 RSF
- + Lease rate: \$22-\$24 PSF, Full-Service
- + Shell space, ready for Tenant Improvements
- + Storage space available
- + Secure, digital entry system



SALE OVERVIEW

- + Sale price: \$6,295,000
- + Gross building size: ±28,050 SF
- + Lot size: ±27,000 SF

www.cbre.us/tacoma

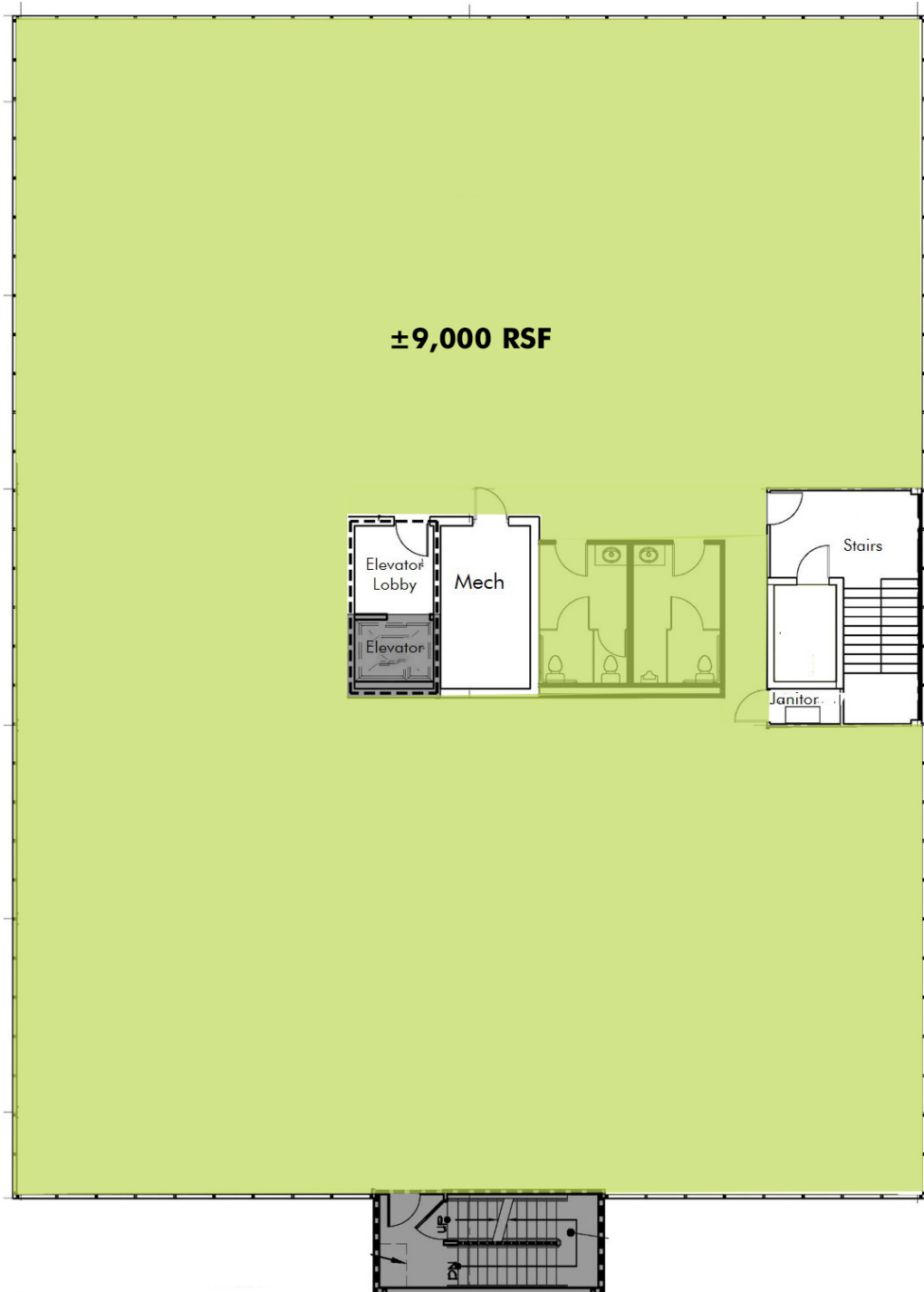
CBRE

FOR LEASE OR SALE
THE MERIT BUILDING

615 S 9TH ST
Tacoma, WA



2ND & 3RD FLOOR PLANS

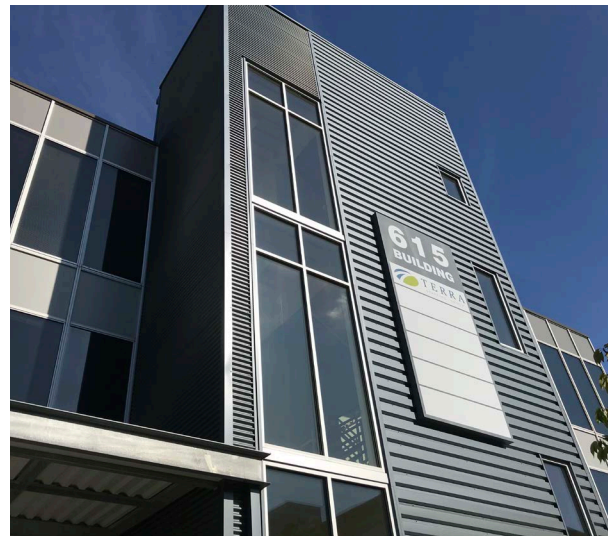


FOR LEASE OR SALE
THE MERIT BUILDING

615 S 9TH ST
Tacoma, WA



BUILDING PHOTOS

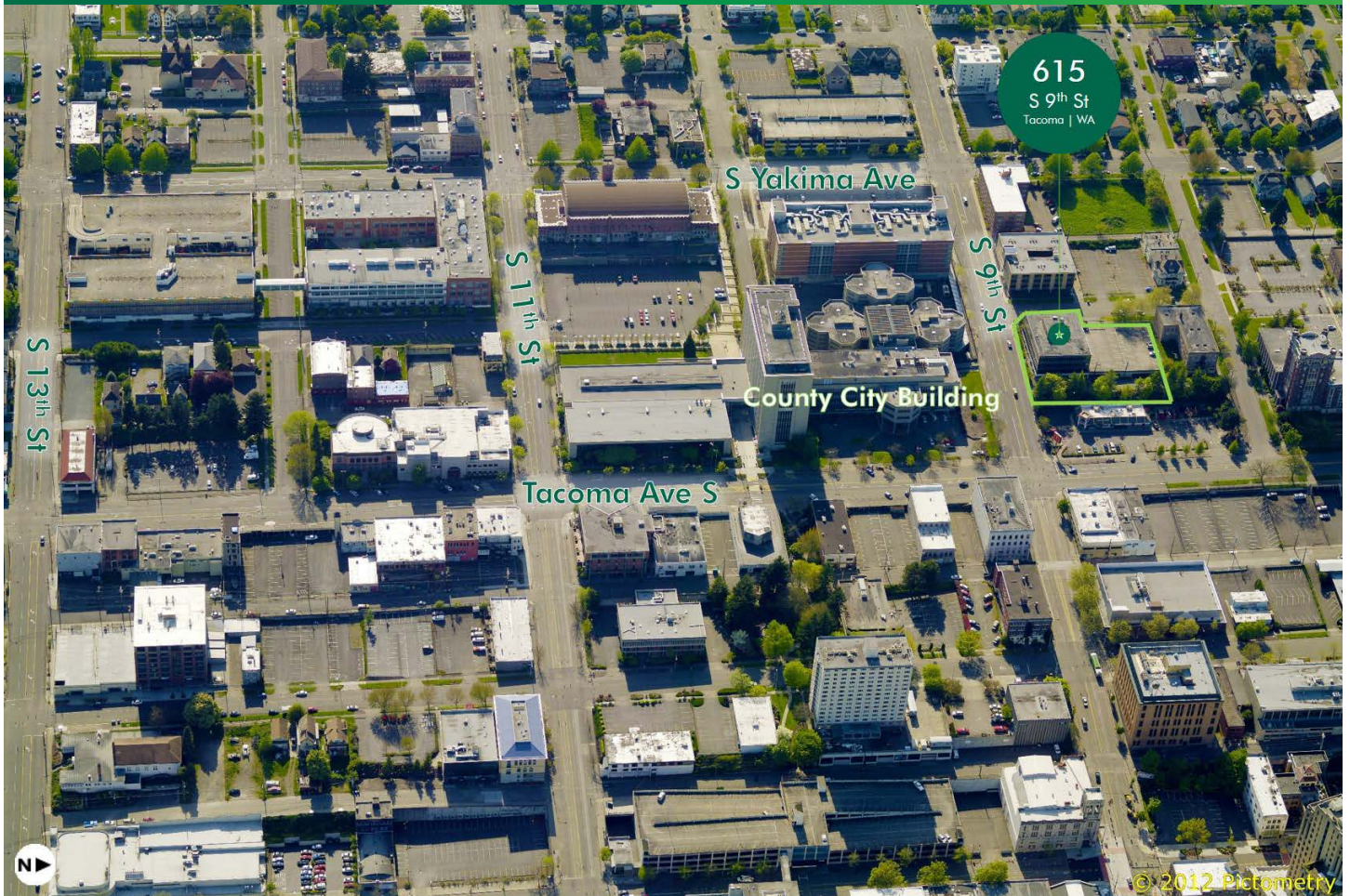


www.cbre.us/tacoma

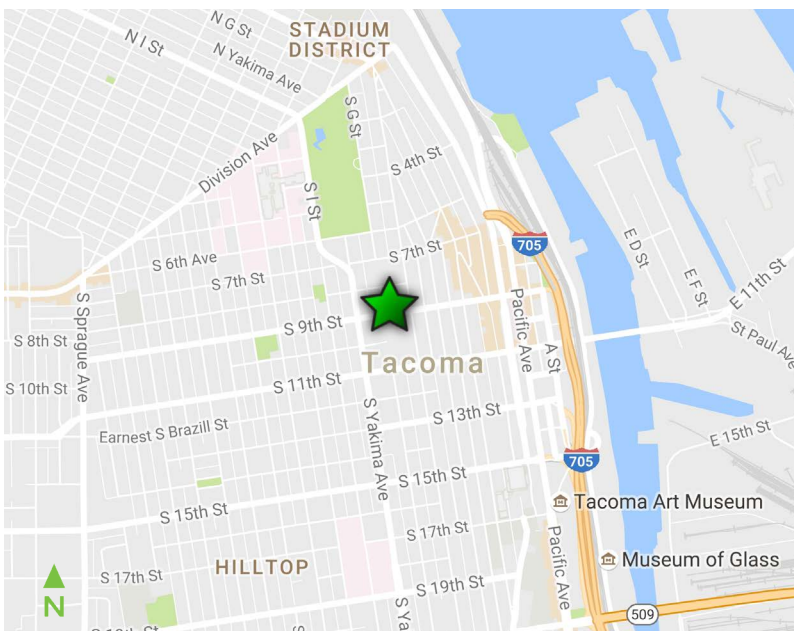
CBRE

FOR LEASE OR SALE THE MERIT BUILDING

615 S 9TH ST
Tacoma, WA



© 2012 Pictometry



CONTACT US

JOHN BAUDER

First Vice President
+1 253 596 0047
john.bauder@cbre.com

HARRISON LAIRD

Vice President
+1 253 596 0030
harrison.laird@cbre.com

CBRE, INC.

1201 Pacific Avenue
Suite 1502
Tacoma, WA 98402

© 2018 CBRE, Inc. All rights reserved. This information has been obtained from sources believed reliable, but has not been verified for accuracy or completeness. You should conduct a careful, independent investigation of the property and verify all information. Any reliance on this information is solely at your own risk. Photos herein are the property of their respective owners. Use of these images without the express written consent of the owner is prohibited. rb 09.12.19

www.cbre.us/tacoma

CBRE