



# For Lease

## Office and warehouse space

### Space options available:

**Suite B** ± 5,132 sf (± 299 sf warehouse; ± 4,833 sf office)

**Suite H** ± 12,874 sf (± 10,180 sf warehouse; ± 2,694 sf office)

### Warehouse clear height 18'

**Suite H** Loading doors - 4 on grade (1 has a lift)

**Suite B** Loading doors - 2 on grade

**Available** 3Q 2019

### Rental Rate

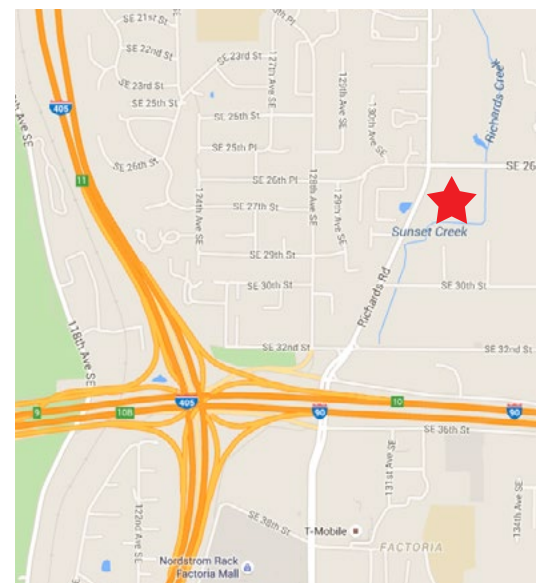
\$1.50/sf office

\$0.95/sf warehouse

\$0.34/sf NNN (estimated 2019)

## Kamber Park

13221 SE 26th St | Bellevue, WA



**Mark Flippo**  
+1 425 974 4007  
mark.flippo@am.jll.com

**Brent Jackson**  
+1 425 974 4015  
brent.jackson@am.jll.com

Jones Lang LaSalle Brokerage, Inc

# Kamber Park

13221 SE 26th St | Bellevue, WA

## Suite B\*

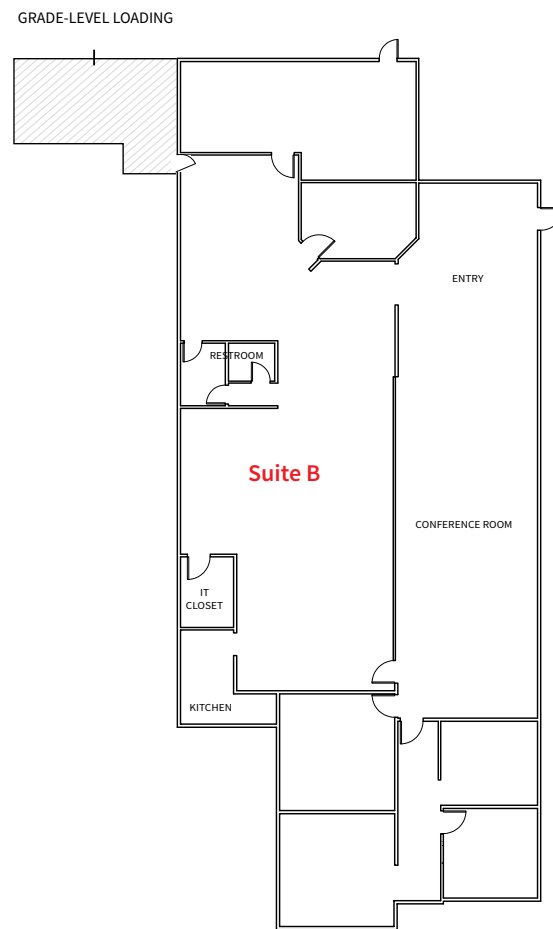
± 5,132 sf

4,833 sf office

299 sf warehouse

2 grade-level loading doors

15 parking stalls



→ N

\*Plans are not to scale or guaranteed 100% accurate

# Kamber Park

13221 SE 26th St | Bellevue, WA

## Suite H\*

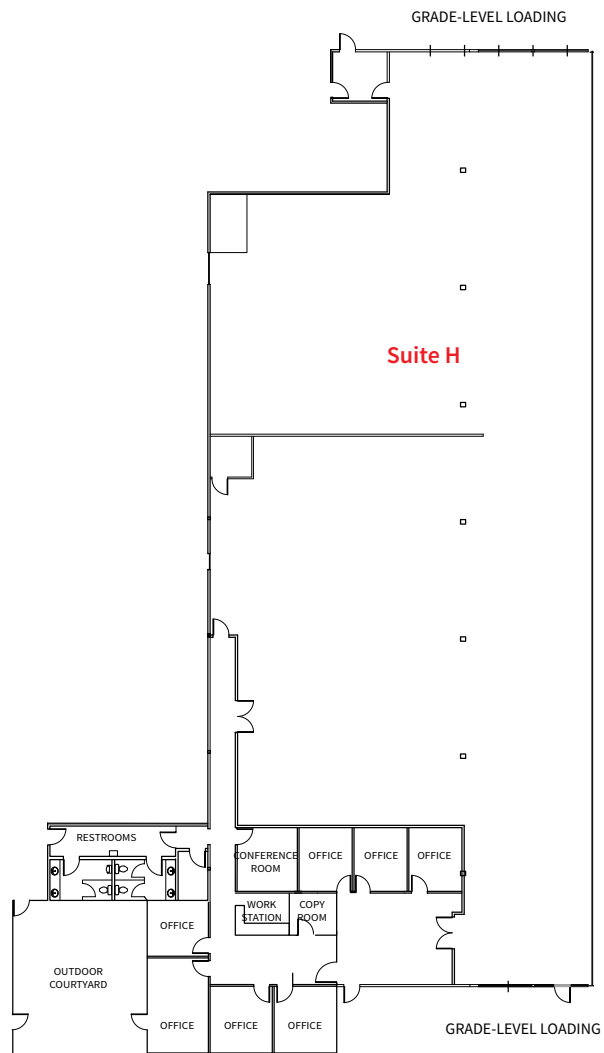
± 12,874 sf

2,694 sf office

10,180 sf warehouse

4 grade-level loading doors

15 parking stalls

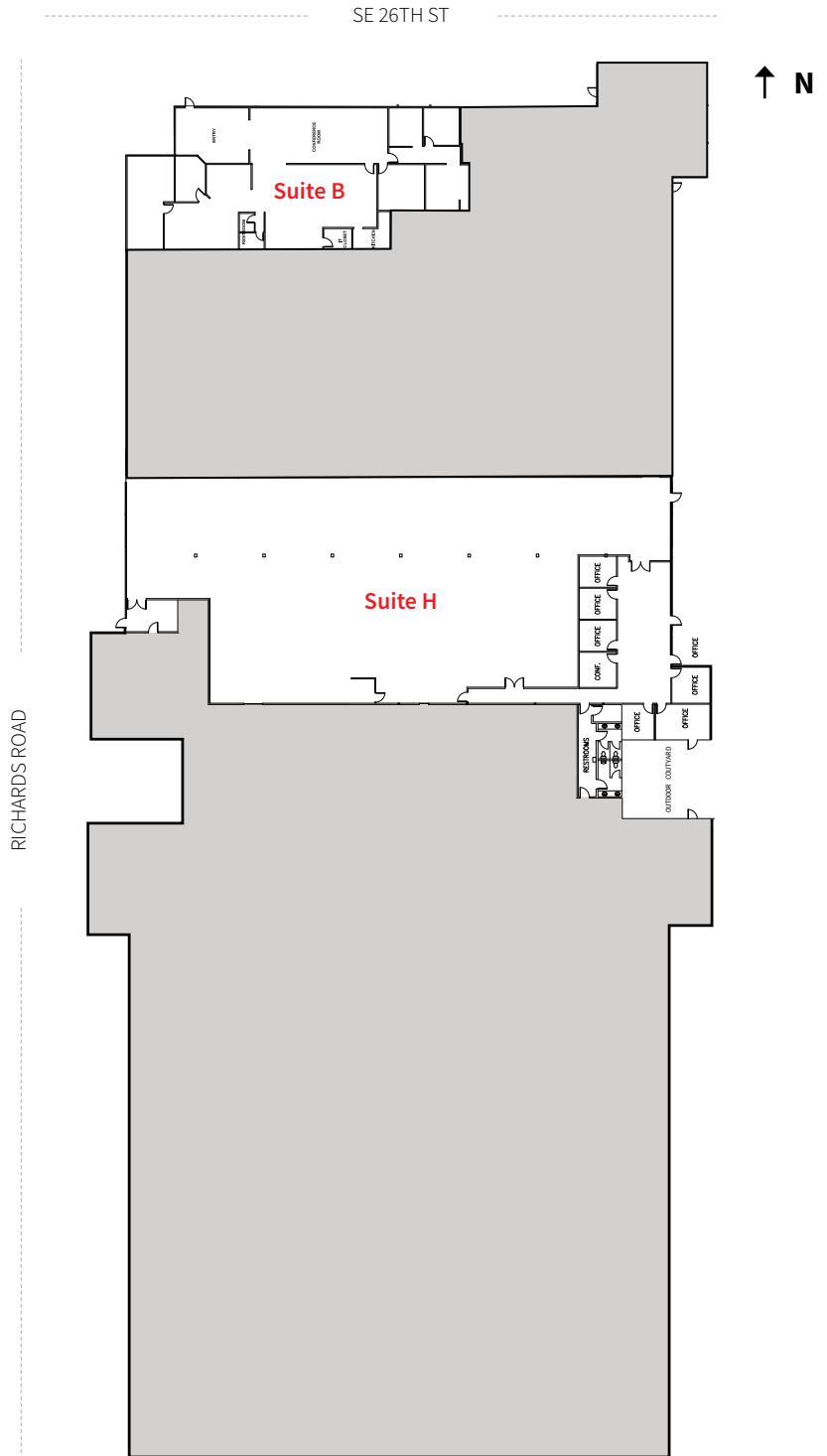


\*Plans are not to scale or guaranteed 100% accurate

# Kamber Park

13221 SE 26th St | Bellevue, WA

## Site plan\*



\*Plans are not to scale or guaranteed 100% accurate