

# 33-37 SOUTH 16TH STREET (16TH & RANSTEAD STS.)

PHILADELPHIA, PA

±2,740 - 9,510 SF AVAILABLE



**\*PROPOSED RENOVATION**



## property highlights.

- Rare full building opportunity at the center of it all – retail, office, and residential
- Situated one property off of 16th & Chestnut Sts. – Philadelphia’s highest pedestrian trafficked corner
- 50’ of frontage along 16th St, directly across the street from The Shops at Liberty Place’s main entrance
- 1st Floor (2,740 SF), 2nd Floor (3,295 SF), or Lower Level (3,475 SF) available together or separate



## stats.

2017 DEMOGRAPHICS*	.25 MILE	.5 MILE	1 MILE
EST. POPULATION	4,736	25,745	84,198
EST. HOUSEHOLDS	2,677	16,599	48,441
EST. AVG. HH INCOME	\$101,404	\$101,540	\$103,558

\*ESRI 2017



**METRO**<sup>®</sup>  
COMMERCIAL  
REAL ESTATE, INC.

MetroCommercial.com | PHILADELPHIA, PA | PLYMOUTH MEETING, PA | MOUNT LAUREL, NJ | NAPLES, FL | MIAMI, FL

## get in touch.

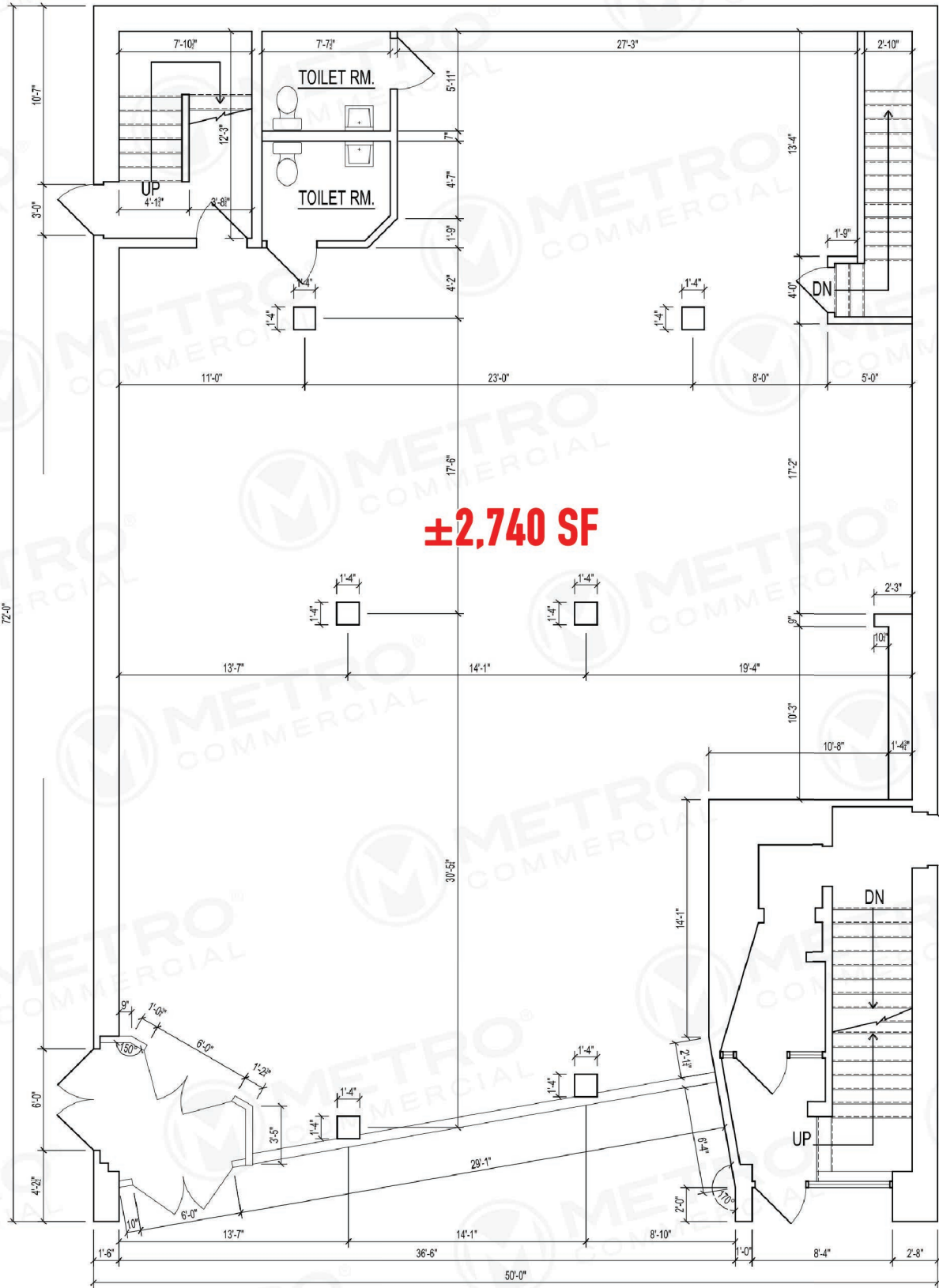
### SCOTT BENSON

office 215.893.0300  
direct 215.282.0158  
sbenson@metrocommercial.com

### MICHAEL GORMAN

office 215.893.0300  
direct 215.282.0152  
mgorman@metrocommercial.com

Ranstead Street



**±2,740 SF**

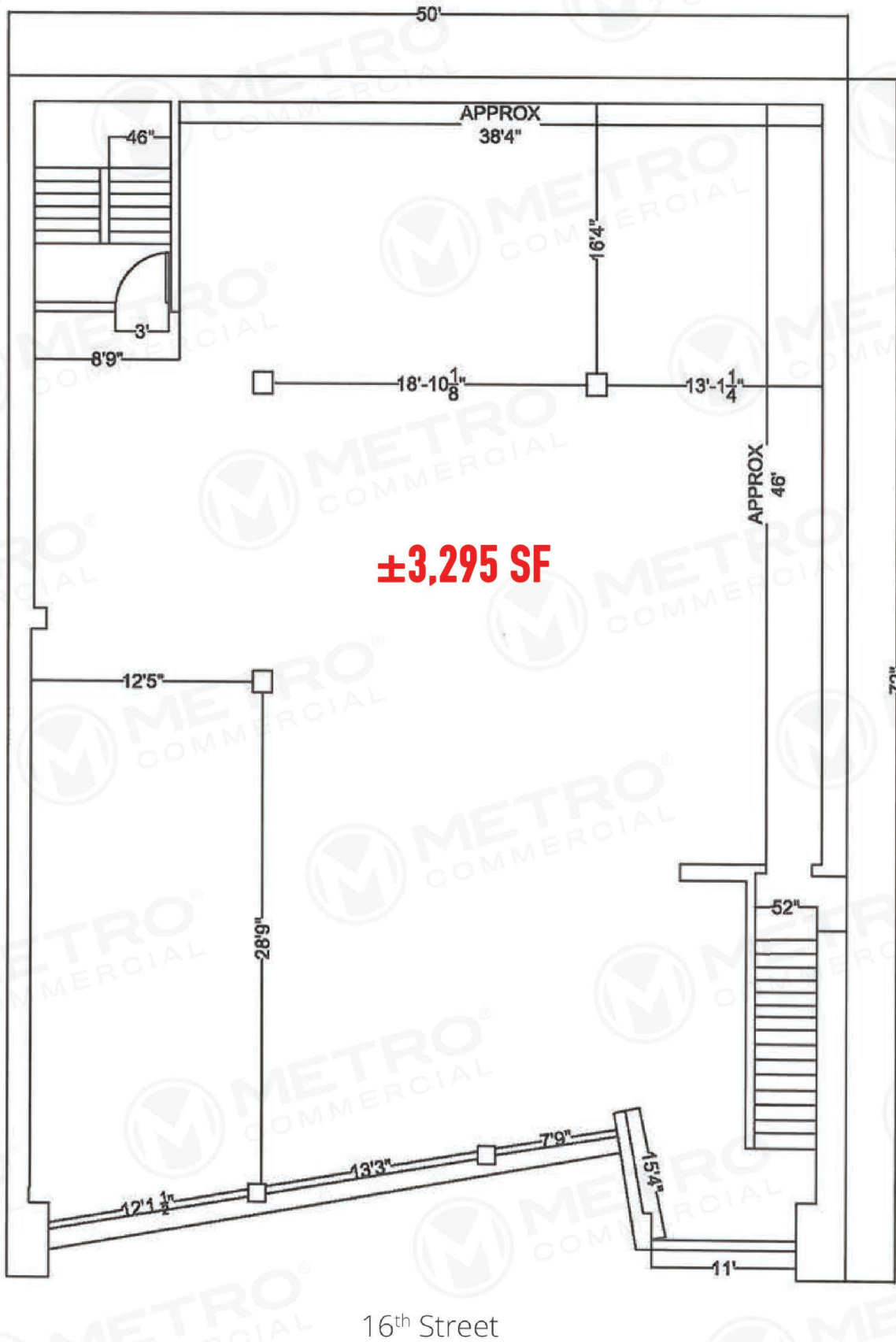
16<sup>th</sup> Street

The information and images contained herein are from sources deemed reliable. However, Metro Commercial Real Estate, Inc. makes no representation whatsoever as to their accuracy or authenticity. Images shown may be modified for illustrative purposes. Images may be out-of-date and not current. 2.19.18

**33-37 SOUTH 16TH STREET - 1ST FLOOR  
PHILADELPHIA, PA**



Ranstead Street

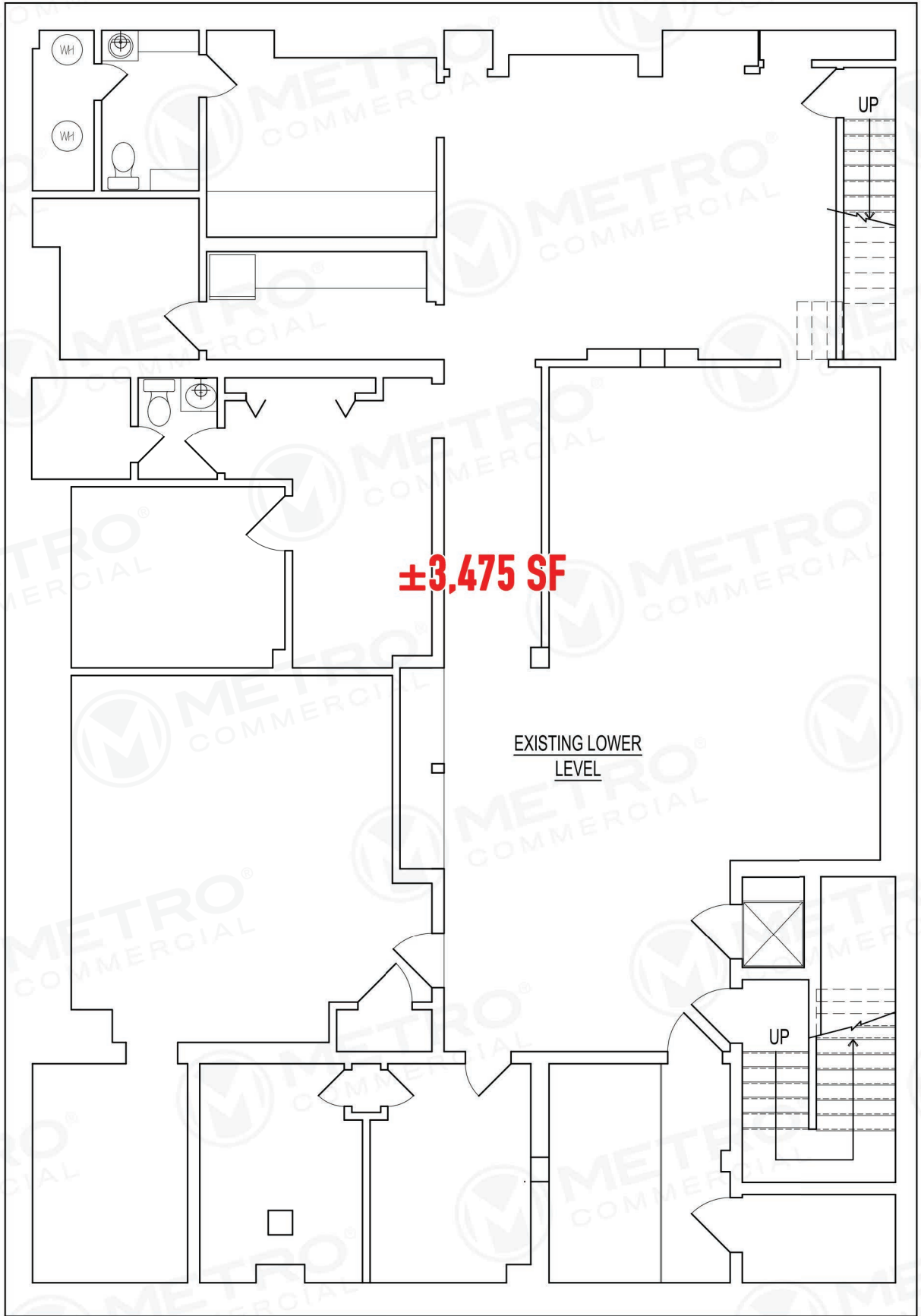


The information and images contained herein are from sources deemed reliable. However, Metro Commercial Real Estate, Inc. makes no representation whatsoever as to their accuracy or authenticity. Images shown may be modified for illustrative purposes. Images may be out-of-date and not current. 2.19.18

# 33-37 SOUTH 16TH STREET - 2ND FLOOR PHILADELPHIA, PA







The information and images contained herein are from sources deemed reliable. However, Metro Commercial Real Estate, Inc. makes no representation whatsoever as to their accuracy or authenticity. Images shown may be modified for illustrative purposes. Images may be out-of-date and not current. 2.19.18

# 33-37 SOUTH 16TH STREET - LOWER LEVEL PHILADELPHIA, PA







**EXISTING CONDITIONS**



**RENDERING LOOKING SOUTHEAST**

The information and images contained herein are from sources deemed reliable. However, Metro Commercial Real Estate, Inc. makes no representation whatsoever as to their accuracy or authenticity. Images shown may be modified for illustrative purposes. Images may be out-of-date and not current. 2.19.18

# 33-37 SOUTH 16TH STREET - PROPOSED STOREFRONT PHILADELPHIA, PA





