

COMMERCIAL LOT AVAILABLE FOR SALE

26090 NORTH THORNTON ROAD, THORNTON, CA



SIZE: 0.57± Acres (26,136± SF)
APN: 001-150-48
ZONING: C-G (Commercial General, San Joaquin County)

FEATURES:

- CG zoning allows for a wide variety of commercial uses
- Immediate access to Interstate 5
- 193± feet of frontage along Thornton Road
- Lot is 126± feet deep
- Level topography



SALE PRICE: \$261,360 (\$10.44/SF)

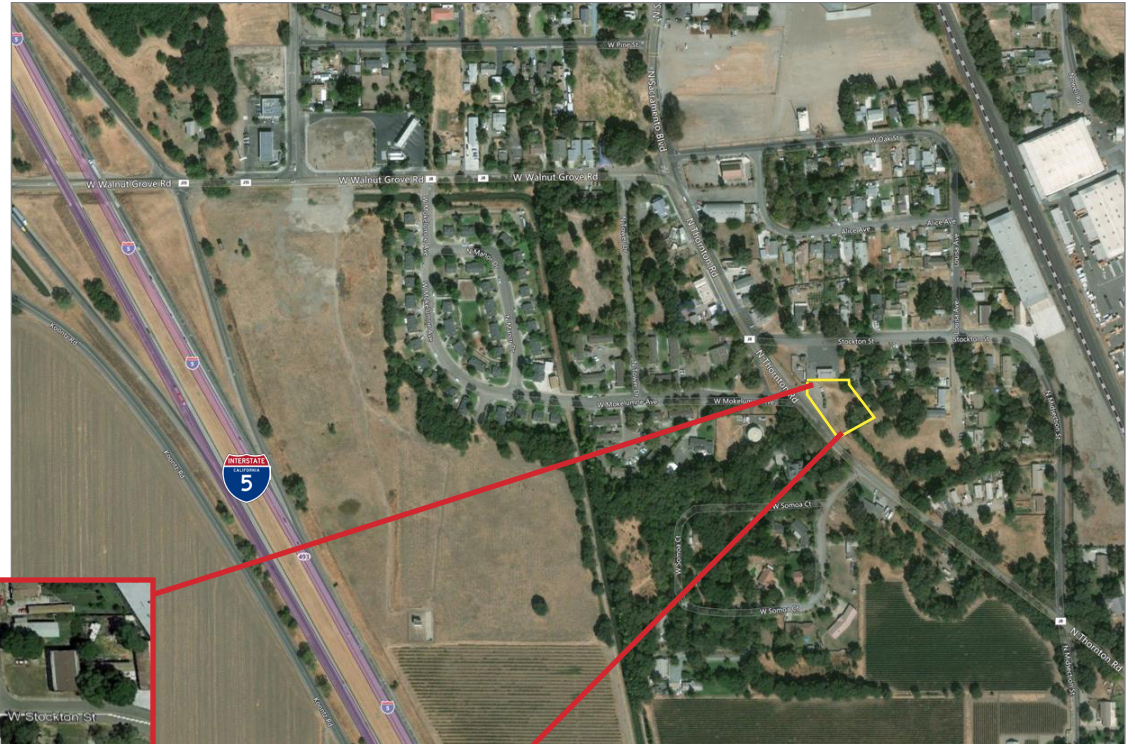
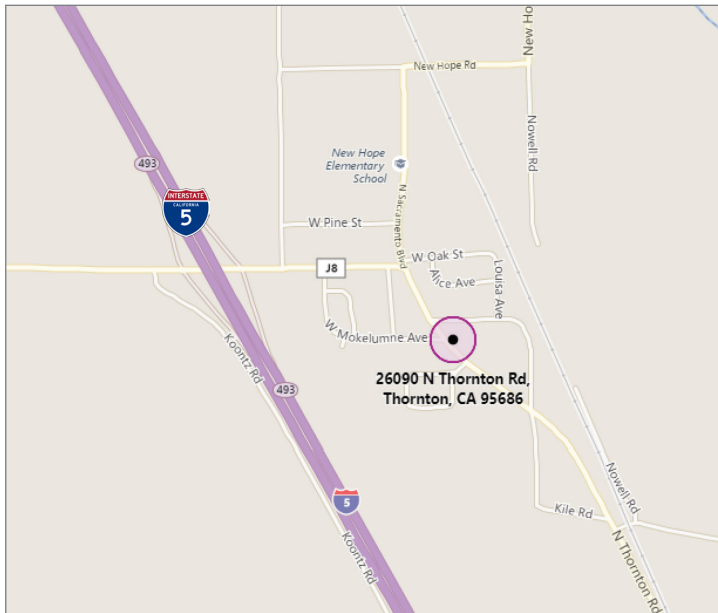
Jim Martin, SIOR
BRE #01214270
jmartin@lee-associates.com
D 209.983.4088
C 925.352.6948

Guy Grace
BRE #02045756
ggrace@lee-associates.com
D 209.982.4444
C 925.360.8610

All information furnished regarding property for sale, rental or financing is from sources deemed reliable, but no warranty or representation is made to the accuracy thereof and same is submitted to errors, omissions, change of price, rental or other conditions prior to sale, lease or financing or withdrawal without notice. No liability of any kind is to be imposed on the broker herein.

COMMERCIAL LOT AVAILABLE FOR SALE

26090 NORTH THORNTON ROAD, THORNTON, CA



Jim Martin, SIOR
BRE #01214270
jmartin@lee-associates.com
D 209.983.4088
C 925.352.6948

Guy Grace
BRE #02045756
ggrace@lee-associates.com
D 209.982.4444
C 925.360.8610

All information furnished regarding property for sale, rental or financing is from sources deemed reliable, but no warranty or representation is made to the accuracy thereof and same is submitted to errors, omissions, change of price, rental or other conditions prior to sale, lease or financing or withdrawal without notice. No liability of any kind is to be imposed on the broker herein.