



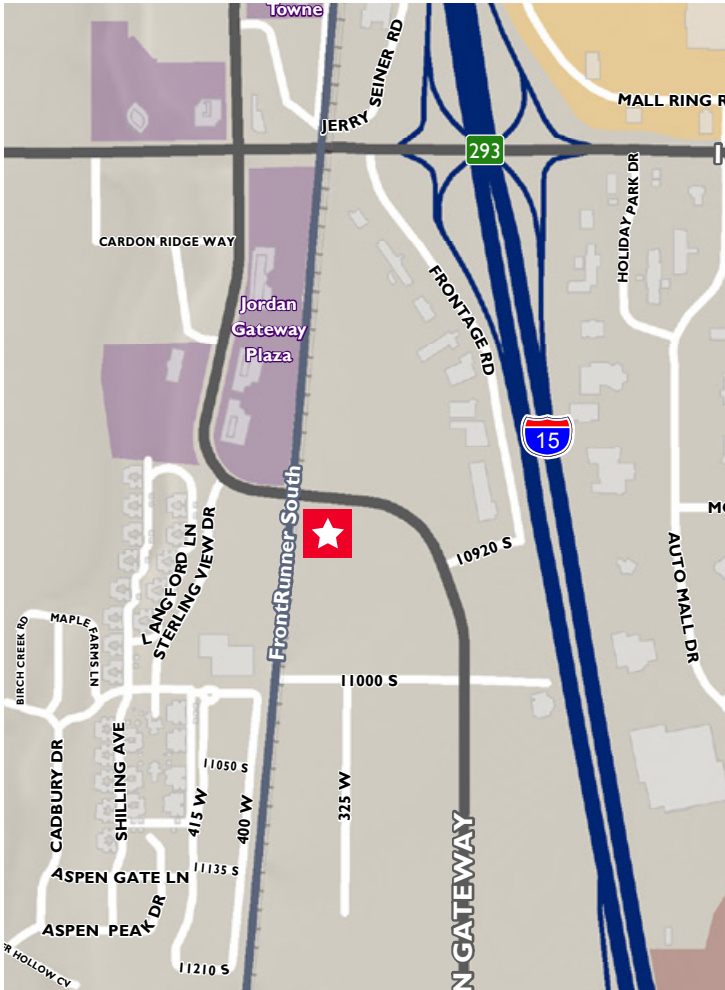
CUSHMAN & WAKEFIELD
Commerce

FOR SALE

10902 S Jordan Gateway
South Jordan, Utah 84095

Property Highlights

- Size: 1.58 Acres
- Sales Price: \$895,000
- Zoning: Commercial
- Adjacent to FrontRunner
- Easy access to 10600 South & 11400 South exits on I-15
- Filled and graded lot
- Ready for immediate development



Peter Hanlon
Director
+1 801 303 5455
phanlon@comre.com

170 South Main Street Suite 1600
Salt Lake City, UT 84101
Main +1 801 322 2000
Fax +1 801 322 2040
comre.com

Independently Owned and Operated / A Member of the Cushman & Wakefield Alliance

Cushman & Wakefield Copyright 2015. No warranty or representation, express or implied, is made to the accuracy or completeness of the information contained herein, and same is submitted subject to errors, omissions, change of price, rental or other conditions, withdrawal without notice, and to any special listing conditions imposed by the property owner(s). As applicable, we make no representation as to the condition of the property (or properties) in question.
(path: G:\1 - Projects\Hanlon, Peter\1 - Flyers\10902sJordanGateway)

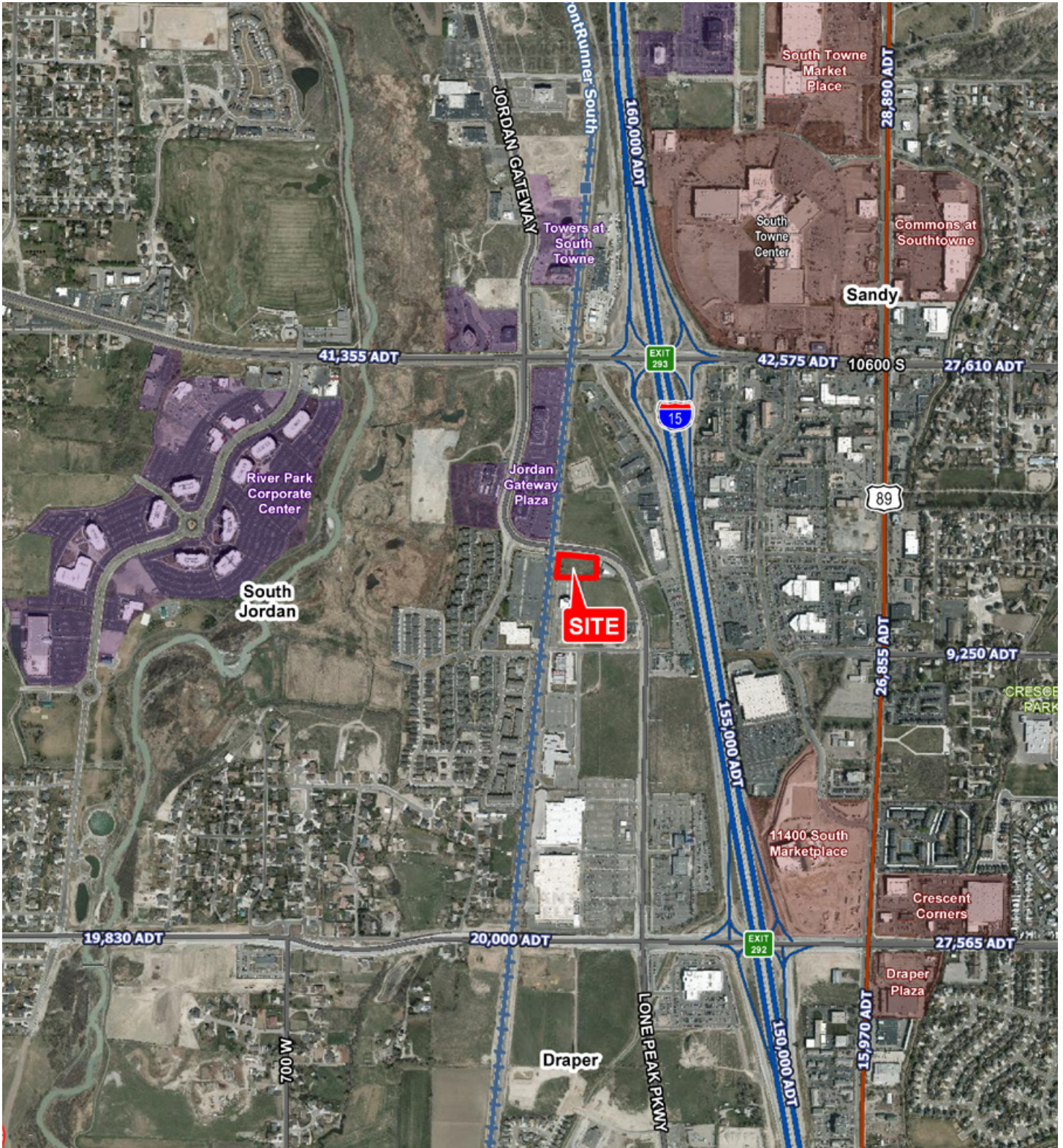


**CUSHMAN &
WAKEFIELD**
Commerce

FOR SALE

10902 S Jordan Gateway

South Jordan, Utah 84095



Independently Owned and Operated / A Member of the Cushman & Wakefield Alliance

Cushman & Wakefield Copyright 2015. No warranty or representation, express or implied, is made to the accuracy or completeness of the information contained herein, and same is submitted subject to errors, omissions, change of price, rental or other conditions, withdrawal without notice, and to any special listing conditions imposed by the property owner(s). As applicable, we make no representation as to the condition of the property (or properties) in question.

(path: G:\1 - Projects\Hanlon, Peter\1 - Flyers\10902sJordanGateway)