



FOR LEASE

# Creekview Building

3350 MONTE VILLA PARKWAY, BOTHELL, WA 98021



Full-floor opportunity located in Bothell's high-tech corridor

**JEFF CHANEY**  
425.450.1127  
[jeff.chaney@kidder.com](mailto:jeff.chaney@kidder.com)

**QUINN KOMEN**  
425.450.1141  
[quinn.komen@kidder.com](mailto:quinn.komen@kidder.com)

**Kidder  
Mathews**

This information supplied herein is from sources we deem reliable. It is provided without any representation, warranty, or guarantee, expressed or implied as to its accuracy. Prospective Buyer or Tenant should conduct an independent investigation and verification of all matters deemed to be material, including, but not limited to, statements of income and expenses. Consult your attorney, accountant, or other professional advisor.

**KIDDER.COM**



FOR LEASE

# Creekview Building

3350 MONTE VILLA PARKWAY, BOTHELL, WA 98021



## 23,000 SF

FIRST FLOOR AVAILABILITY

Located in Bothell's high-tech corridor

Building signage available

Abundant free parking

Asking rate  
\$18.00/SF, NNN

**JEFF CHANEY**

Senior Vice President

425.450.1127

[jeff.chaney@kidder.com](mailto:jeff.chaney@kidder.com)

**QUINN KOMEN**

Associate

425.450.1141

[quinn.komen@kidder.com](mailto:quinn.komen@kidder.com)

KIDDER.COM

This information supplied herein is from sources we deem reliable. It is provided without any representation, warranty, or guarantee, expressed or implied as to its accuracy. Prospective Buyer or Tenant should conduct an independent investigation and verification of all matters deemed to be material, including, but not limited to, statements of income and expenses. Consult your attorney, accountant, or other professional advisor.

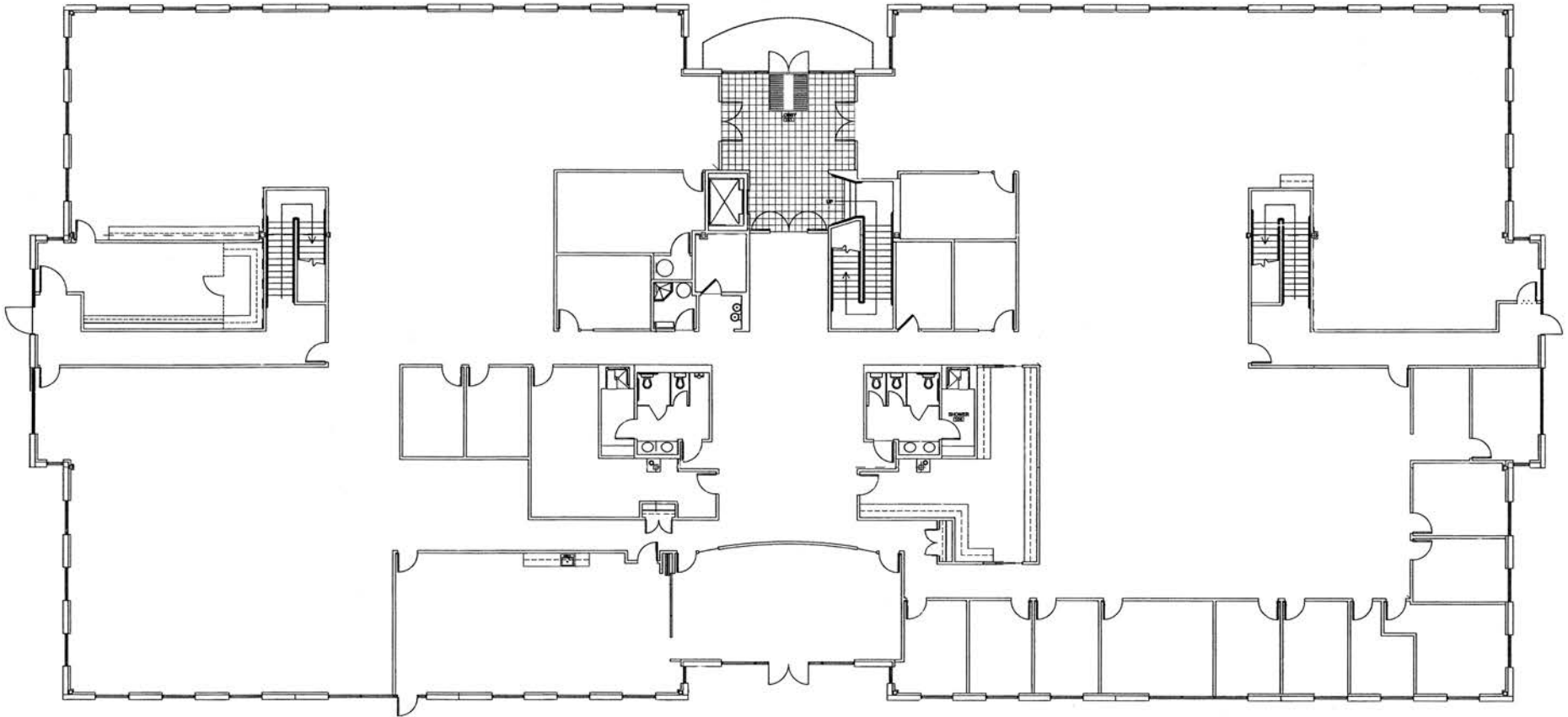
**km** Kidder Mathews

FOR LEASE

# Creekview Building

3350 MONTE VILLA PARKWAY, BOTHELL, WA 98021

## Suite 100



KIDDER.COM

This information supplied herein is from sources we deem reliable. It is provided without any representation, warranty, or guarantee, expressed or implied as to its accuracy. Prospective Buyer or Tenant should conduct an independent investigation and verification of all matters deemed to be material, including, but not limited to, statements of income and expenses. Consult your attorney, accountant, or other professional advisor.

**km** Kidder  
Mathews