

DRESS BARN PLAZA

572 MAIN AVENUE | NORWALK, CT 06851

AVAILABLE 9,800 SF

ANCHORED BY

verizon

PROPERTY INFORMATION

- GLA 12,700 sf
- 60 Parking Spaces
- Traffic: 32,000 vehicles per day
- Adjacent to Walmart shopping center, and TJ Maxx shopping center

SPACE DETAILS

- Former Dress Barn Available 9,800sf
- Join Verizon

AREA DEMOGRAPHICS

2019 DEMOGRAPHICS	3 MILE	5 MILE	7 MILE
POPULATION	54,363	138,849	197,060
MEDIAN HH INC	\$124,830	\$123,730	\$137,365
AVERAGE HH INC	\$173,058	\$186,953	\$215,042



www.chartweb.com

FOR MORE INFORMATION CONTACT:

DAN ZELSON | 203.227.2922 | dan@chartweb.com




DRESS BARN PLAZA

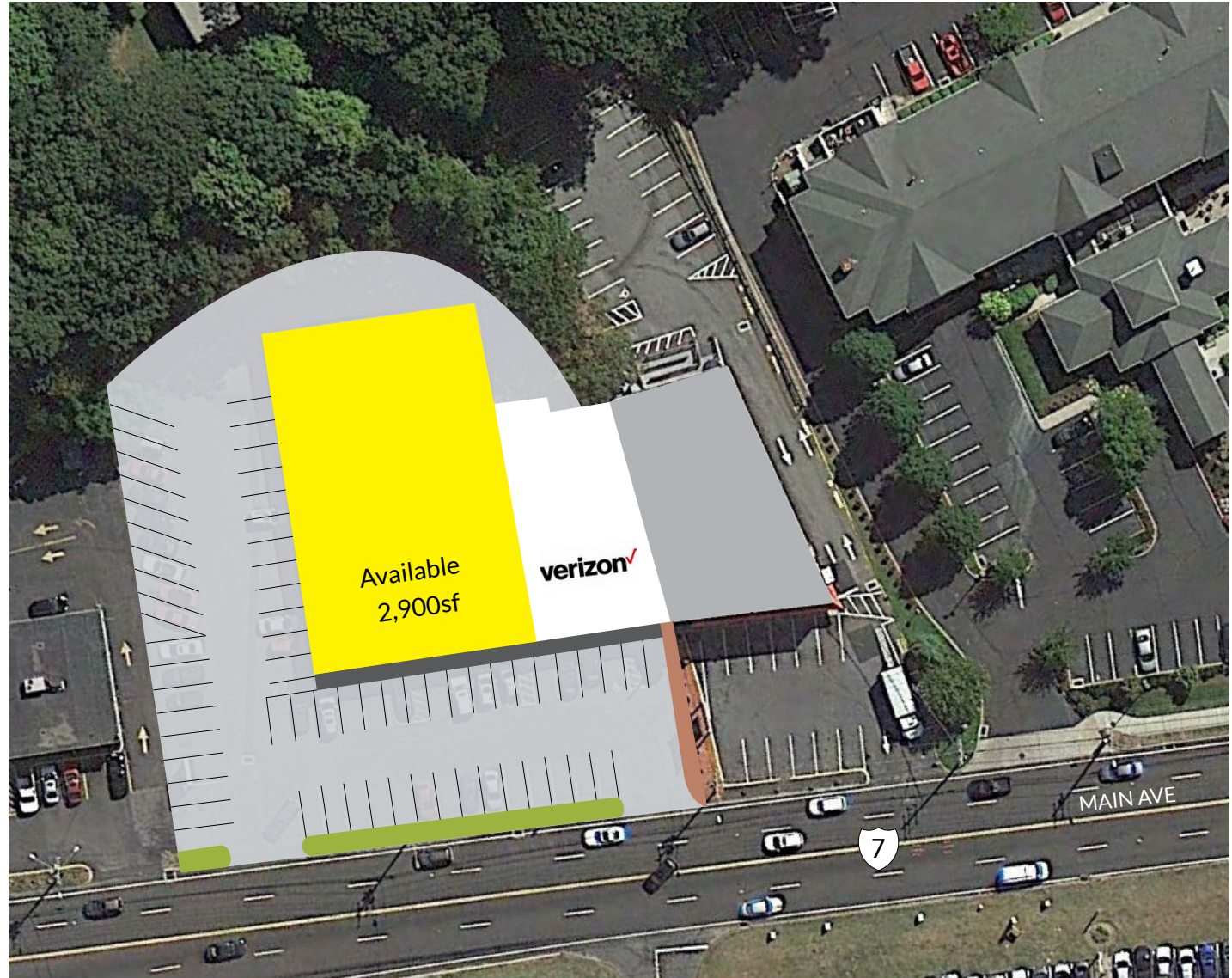
572 MAIN AVENUE | NORWALK, CT 06851

TENANTS / AVAILABILITY

#	TENANT	Sq. Ft.
01	Available	9,800
02	Verizon	2,900

GLA 12,700sf

-  Available
-  Lease Out
-  Occupied

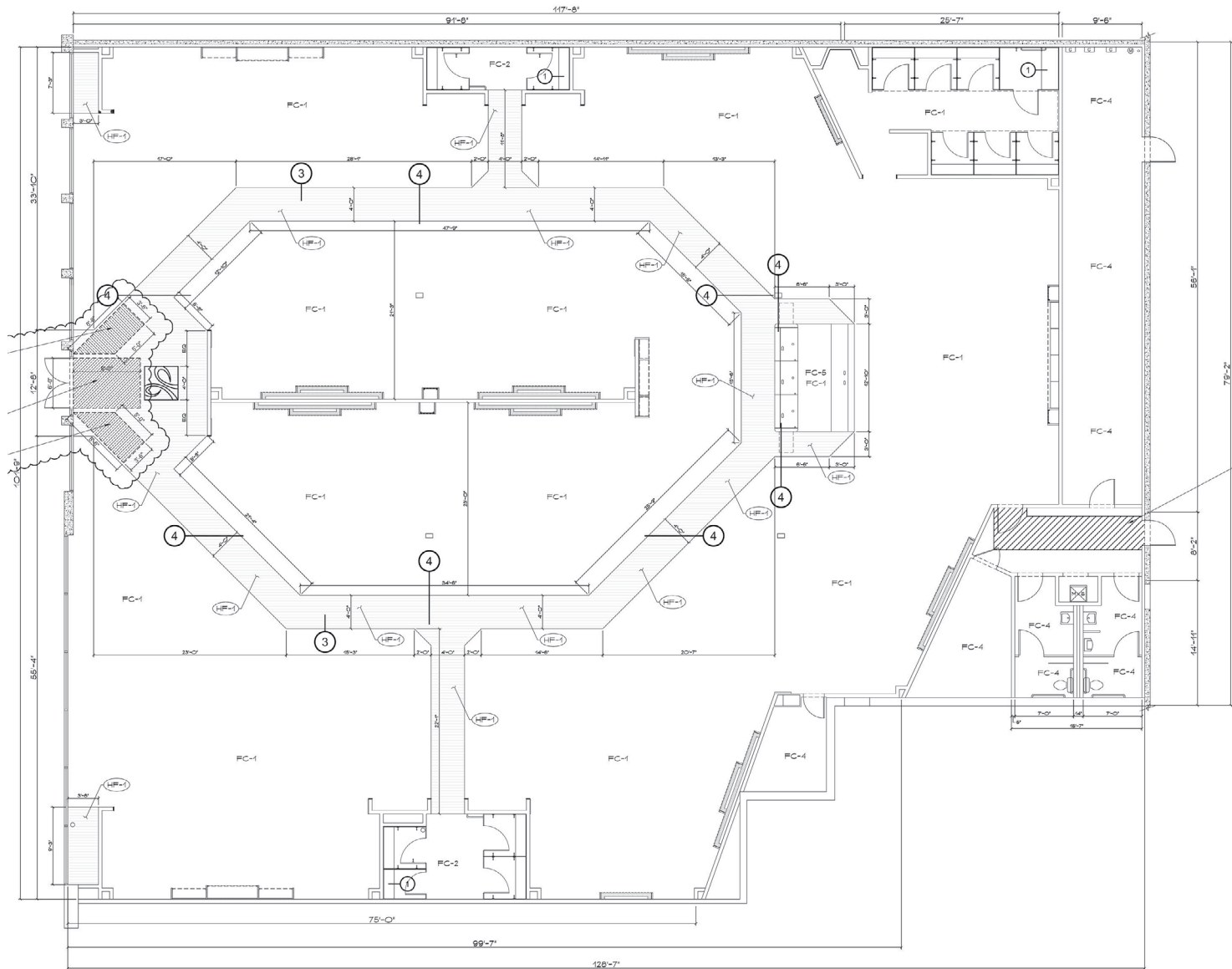


CHARTER REALTY & DEVELOPMENT

Information contained in this document has been reviewed and approved by Charter Realty and Development; however, errors sometimes occur. Charter disclaims any warranty of any kind, expressed or implied, as to any matter whatsoever relating to this service. In no event shall Charter be liable for any indirect, special, incidental or consequential damages arising out of any use of or reliance on any content or materials contained herein.

DRESS BARN PLAZA

572 MAIN AVENUE | NORWALK, CT 06851

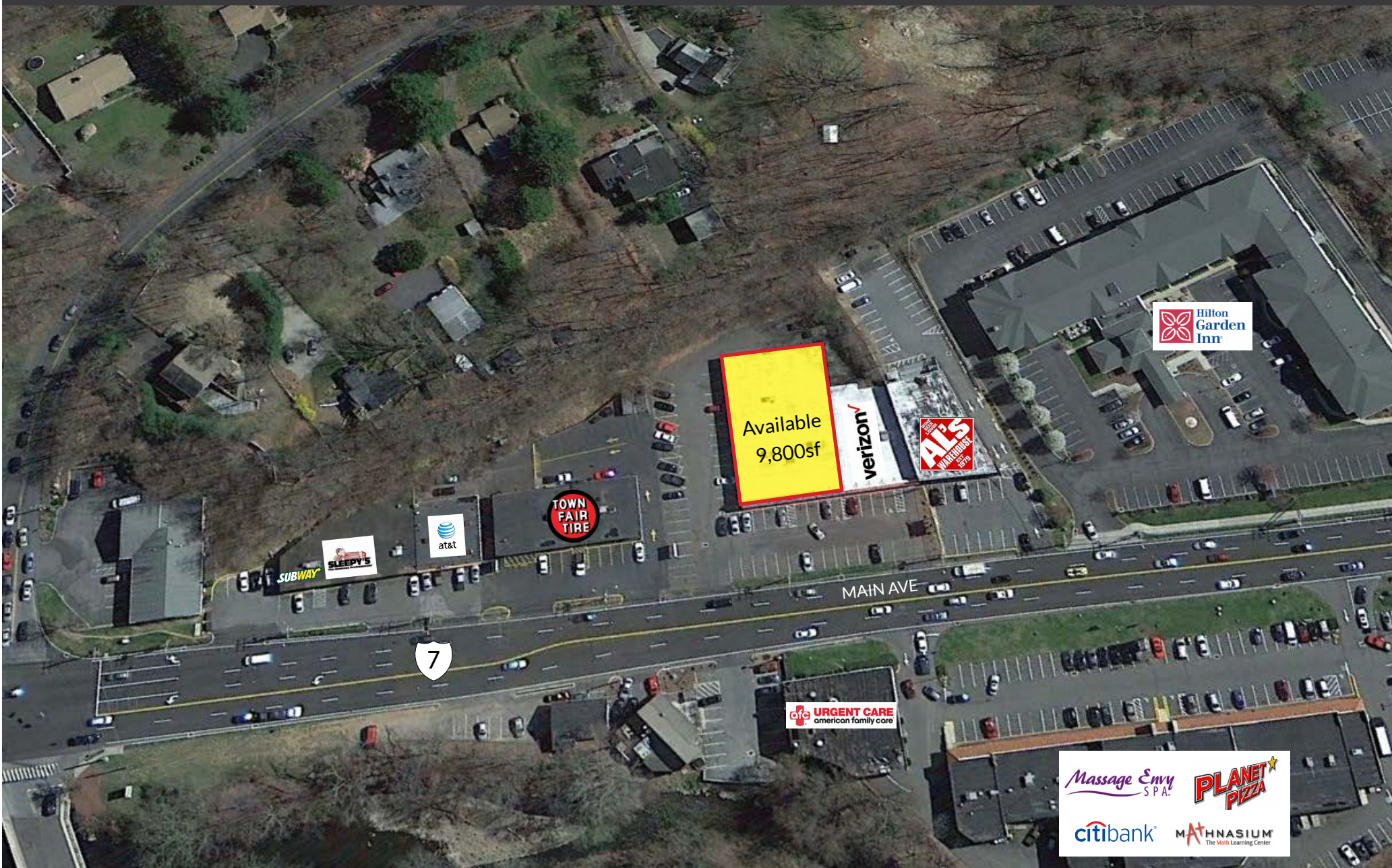


CHARTER REALTY & DEVELOPMENT

Information contained in this document has been reviewed and approved by Charter Realty and Development; however, errors sometimes occur. Charter disclaims any warranty of any kind, expressed or implied, as to any matter whatsoever relating to this service. In no event shall Charter be liable for any indirect, special, incidental or consequential damages arising out of any use of or reliance on any content or materials contained herein.

DRESS BARN PLAZA

572 MAIN AVENUE | NORWALK, CT 06851



CHARTER REALTY & DEVELOPMENT

Information contained in this document has been reviewed and approved by Charter Realty and Development; however, errors sometimes occur. Charter disclaims any warranty of any kind, expressed or implied, as to any matter whatsoever relating to this service. In no event shall Charter be liable for any indirect, special, incidental or consequential damages arising out of any use of or reliance on any content or materials contained herein.

DRESS BARN PLAZA

572 MAIN AVENUE | NORWALK, CT 06851

