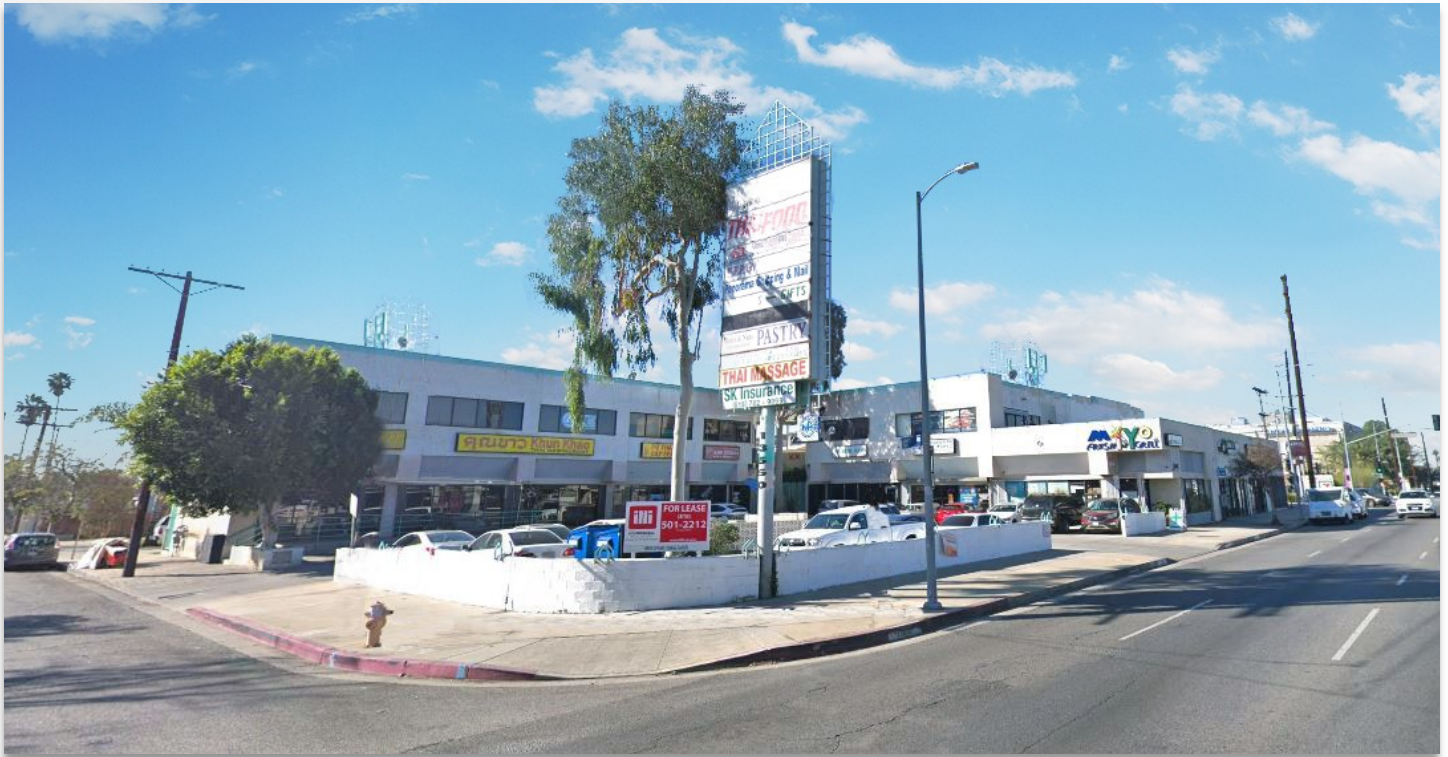


Kaiser Permanente Adjacent Shopping Center With Retail and Office

13550 Roscoe Boulevard, Panorama City, CA 91402

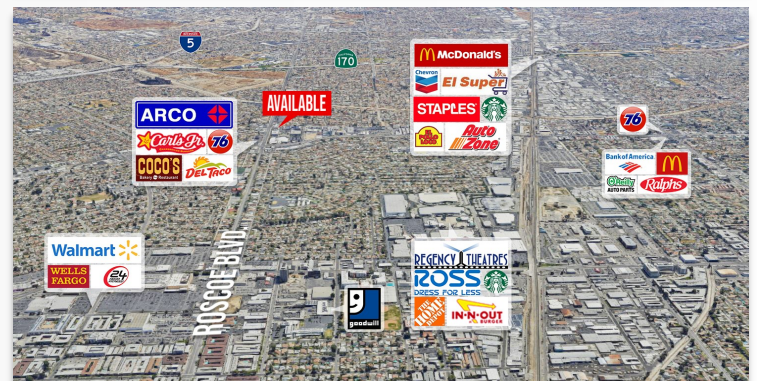
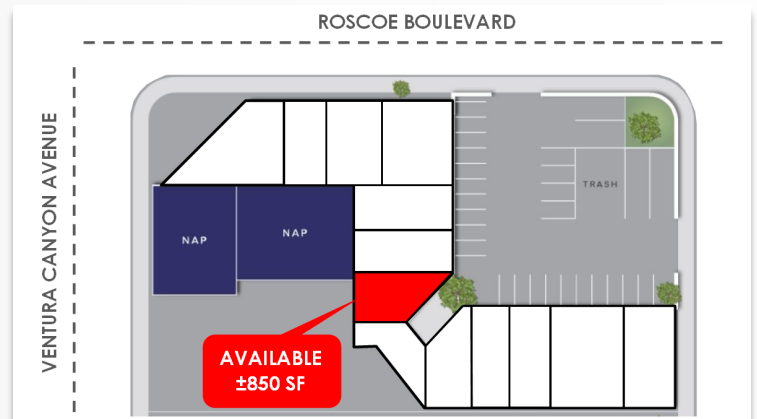


PROPERTY DESCRIPTION

- Approximately 850 SF available
- Established and verified tenant mix
- Pylon Signage available
- Busy retail area

LOCATION DESCRIPTION

- Directly across from Kaiser Permanente's medical center
- Situated on over 50-acres
- Employing over 4,000 staff members
- Located in the heart of Panorama City



EXCLUSIVE AGENTS: (818) 501-2212

Todd Nathanson x101
todd@illicre.com
DRE #00923779

Greg Offsay x104
greg@illicre.com
DRE #01837719

Armen Tchapanian x324
armen@illicre.com
DRE #02041876

17547 Ventura Blvd., Ste. 304 · Encino CA 91316 · 818.501.2212/Phone · 818.501.2202/Fax · www.illicre.com · BRE #01834124

This information has been secured from sources we believe to be reliable, but we make no representations or warranties, expressed or implied, as to the accuracy of the information. References to square footage are approximate. References to neighboring retailers are subject to change, and may not be adjacent to the vacancy being marketed either prior to, during, or after leases are signed. Lessee must verify the information and bears all risk for any inaccuracies.

