



POWER MARKETPLACE BUSINESS PARK

East of NEC Power & Germann Rd Queen Creek, AZ 85242

Industrial Lots For Sale | Sale Price: \$5.95 PSF

- Lot 4 ±48,816 SF \$290,455
- Lot 5 ±48,426 SF \$288,134
- Lot 6 ±48,036 SF \$285,814

Zoned I-1, Queen Creek
Thriving Power Ranch Area Surrounded by Developed Retail

Jim Stockwell
D: 480.621.3286
M: 602.818.5010
jstockwell@cpiaz.com



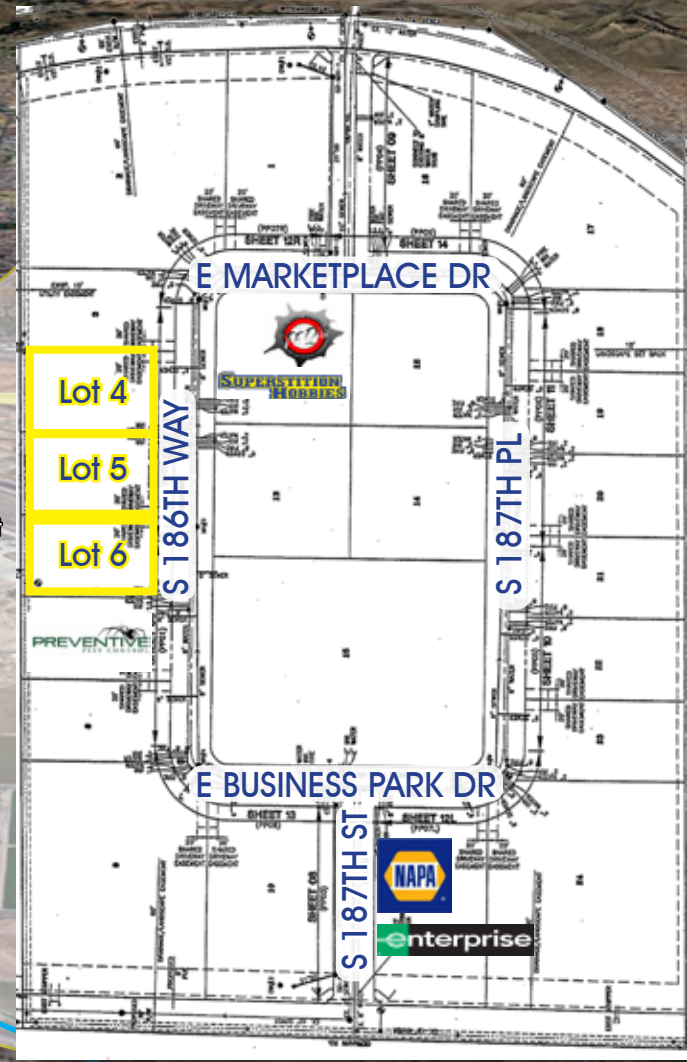
COMMERCIAL PROPERTIES INC.
Locally Owned. Globally Connected.

TEMPE: 2323 W. University Drive, Tempe, AZ 85281 | 480.966.2301
SCOTTSDALE: 8777 N. Gainey Center Dr., Suite 245, Scottsdale, AZ 85258 | www.cpiplaz.com

The information contained herein has been obtained from various sources. We have no reason to doubt its accuracy; however, J & J Commercial Properties, Inc. has not verified such information and makes no guarantee, warranty or representation about such information. The prospective buyer or lessee should independently verify all dimensions, specifications, floor plans, and all information prior to the lease or purchase of the property. All offerings are subject to price change, prior sale, lease, or withdrawal from the market without prior notice. Effective 10/10/18

POWER MARKETPLACE BUSINESS PARK

East of NEC Power & Germann Rd Queen Creek, AZ 85242



Industrial Lots For Sale
Sale Price: \$5.95 PSF

Jim Stockwell
D: 480.621.3286
M: 602.818.5010
jstockwell@cpiaz.com



COMMERCIAL PROPERTIES INC.

Locally Owned. Globally Connected. 

TEMPE: 2323 W. University Drive, Tempe, AZ 85281 | 480.966.2301
SCOTTSDALE: 8777 N. Gainey Center Dr., Suite 245, Scottsdale, AZ 85258 | www.cpi.com

The information contained herein has been obtained from various sources. We have no reason to doubt its accuracy; however, J & J Commercial Properties, Inc. has not verified such information and makes no guarantee, warranty or representation about such information. The prospective buyer or lessee should independently verify all dimensions, specifications, floor plans, and all information prior to the lease or purchase of the property. All offerings are subject to price change, prior sale, lease, or withdrawal from the market without prior notice. Effective 10/10/18