



FROLICS PLAZA SHOPPING CENTER

RETAIL SPACE FOR LEASE | I-29 & NW Barry Rd (SWC)
7101 - 7121 NW Barry Road, Kansas City, Missouri



Lease Rate: \$24/SF NNN | End Cap & In-Line Space

DEMOGRAPHICS

	1 mile	3 miles	5 miles
Estimated Population	10,108	49,848	96,007
Avg. Household Income	\$75,172	\$96,733	\$90,356

- 1,300 SF end cap space and 3,250 SF in-line space - FOR LEASE
- Directly across from Zona Rosa's entrance at I-29 & Barry Road
- Intersection carries over 85,000 cars per day
- Next to high volume QuikTrip
- Excellent visibility and signage to Barry Road



CLICK HERE TO VIEW MORE LISTING INFORMATION

For More Information Contact:

JODY MINDER | 816.916.4039 | jminder@blockandco.com

GREG ROBERTS | 816.412.7384 | groberts@blockandco.com

Exclusive Agents



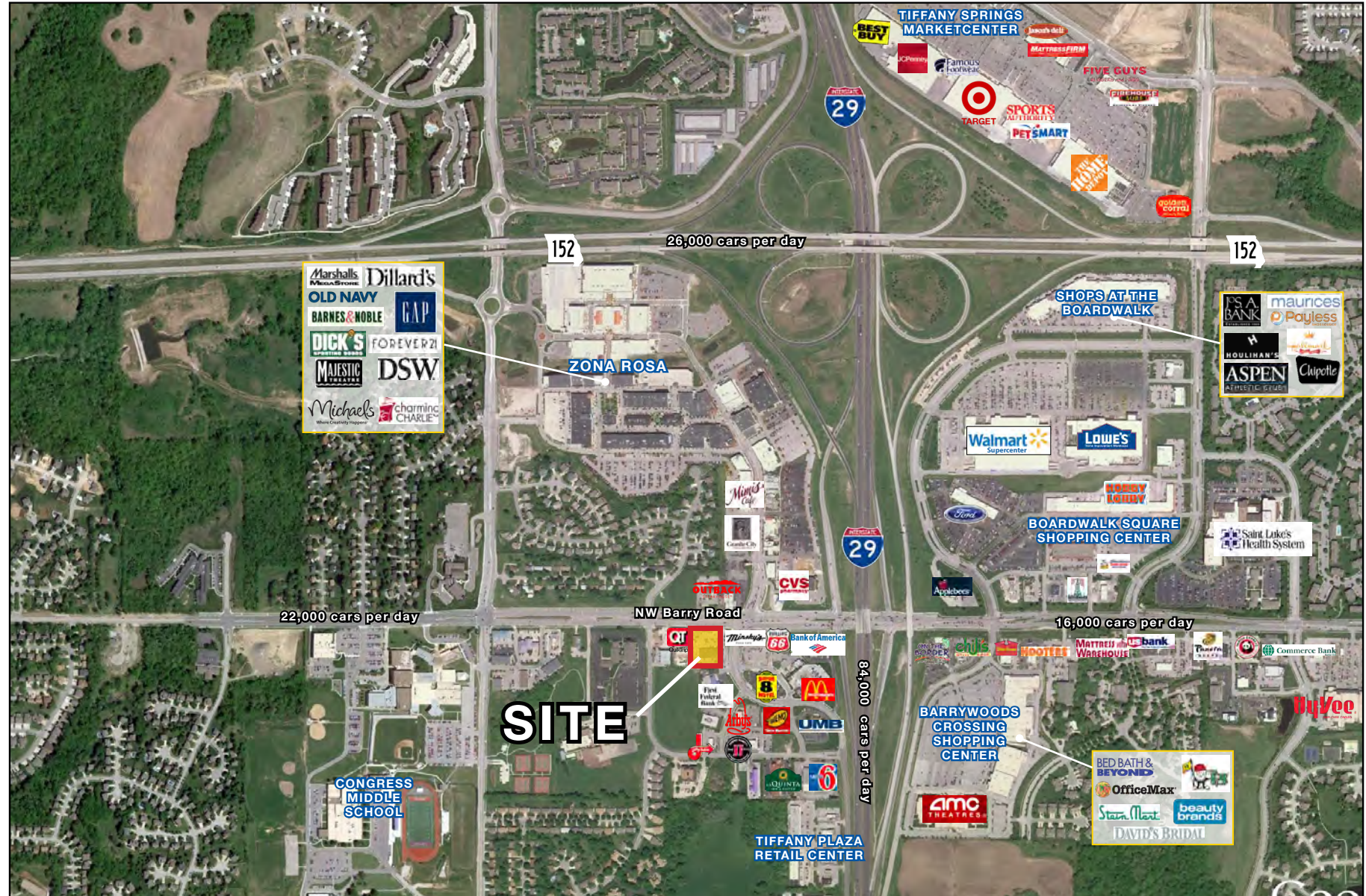


FROLICS PLAZA SHOPPING CENTER

RETAIL SPACE FOR LEASE | I-29 & NW Barry Rd (SWC)
7101 - 7121 NW Barry Road, Kansas City, Missouri

1,300 SF END CAP
3,250 SF IN-LINE
SPACE FOR LEASE

AERIAL



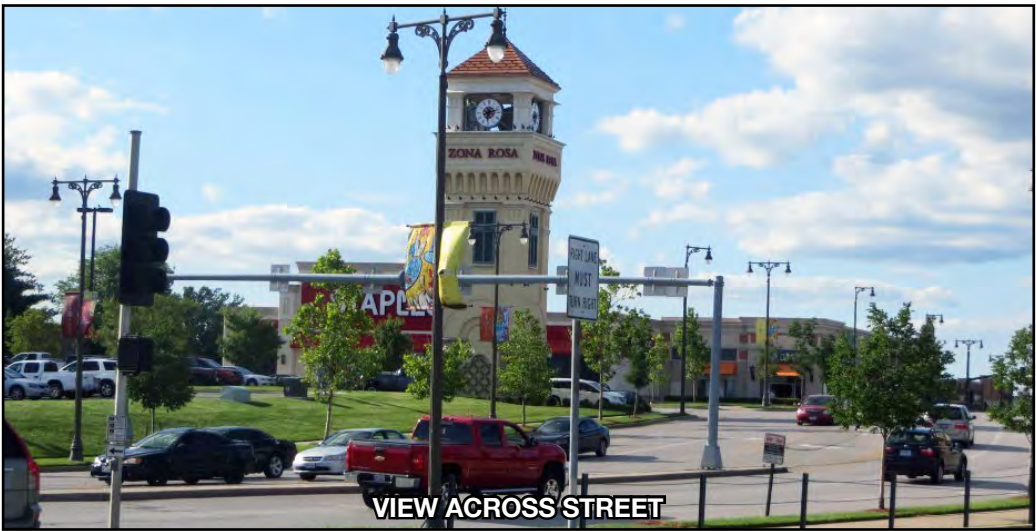


FROLICS PLAZA SHOPPING CENTER

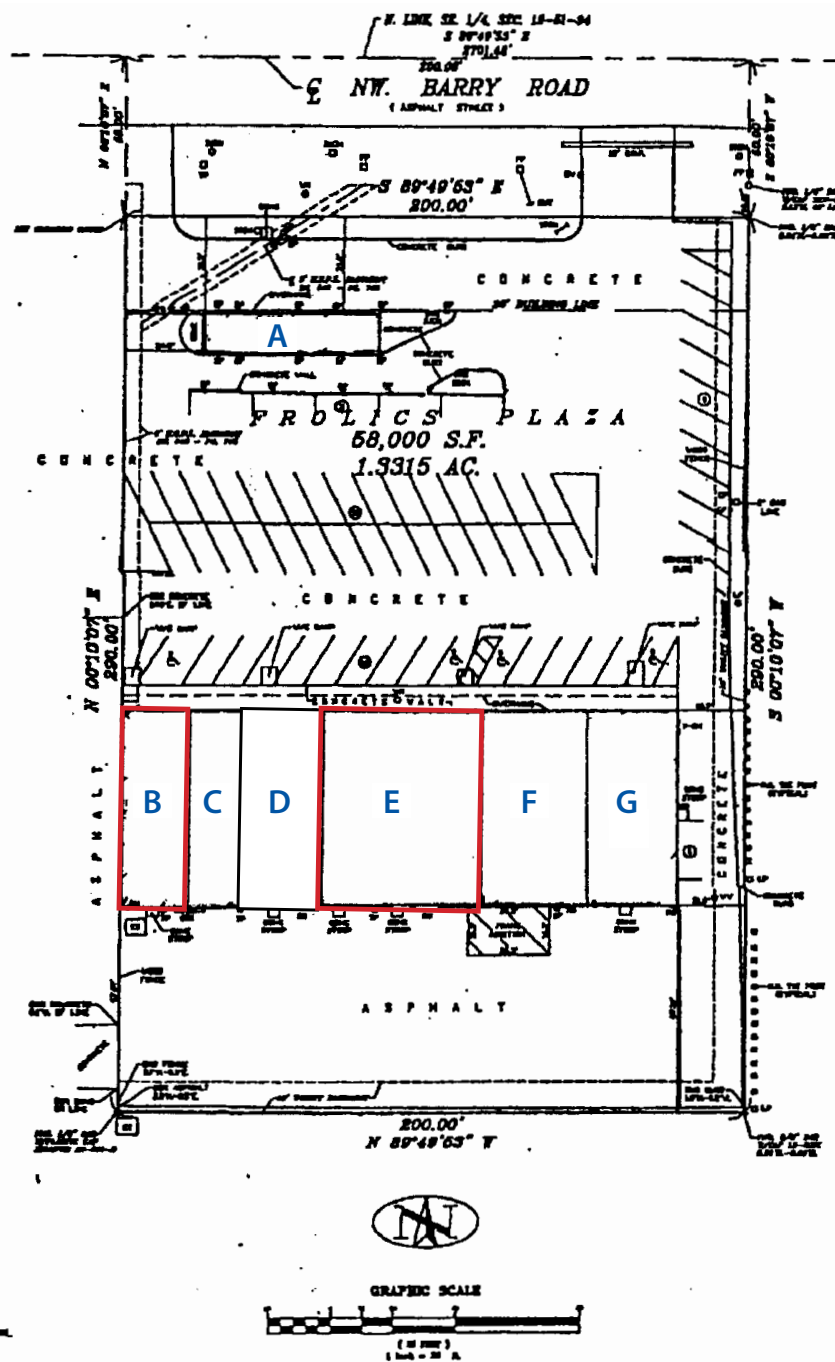
RETAIL SPACE FOR LEASE | I-29 & NW Barry Rd (SWC)
7101 - 7121 NW Barry Road, Kansas City, Missouri

1,300 SF END CAP
3,250 SF IN-LINE
SPACE FOR LEASE

ADDITIONAL PROPERTY PHOTOS



SITE PLAN



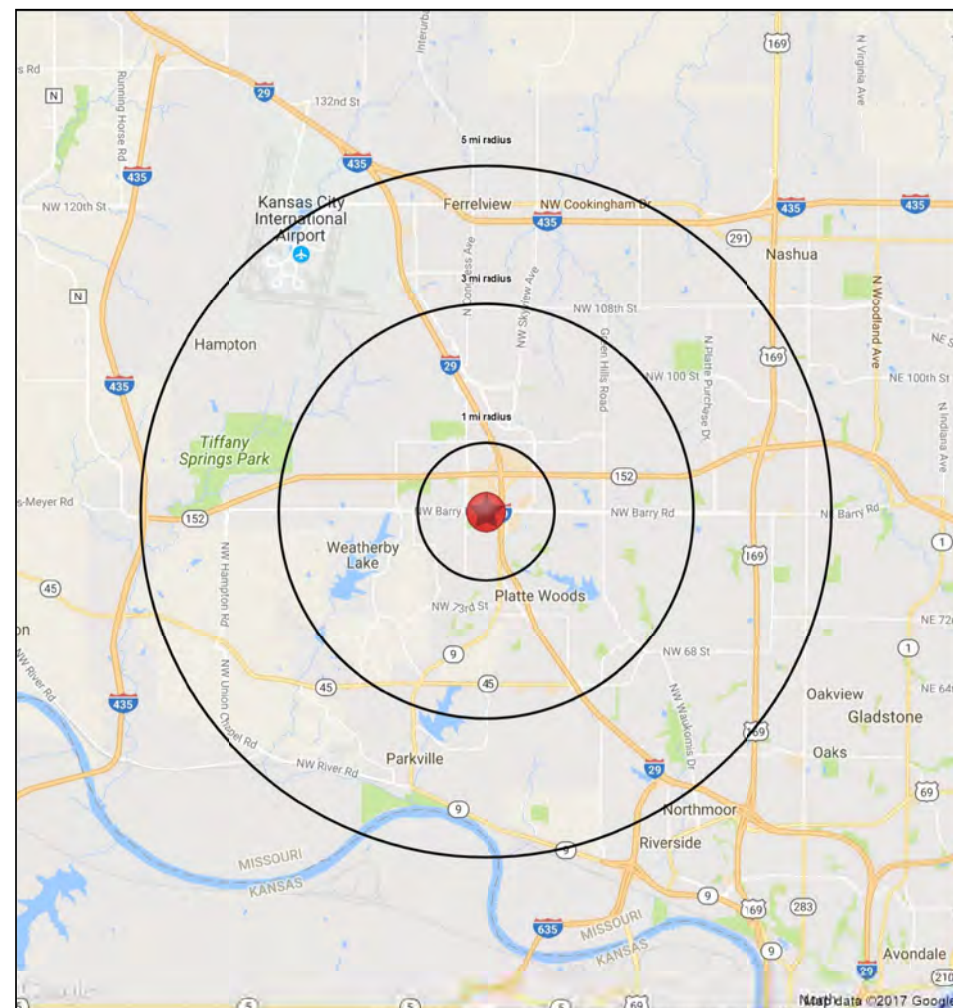
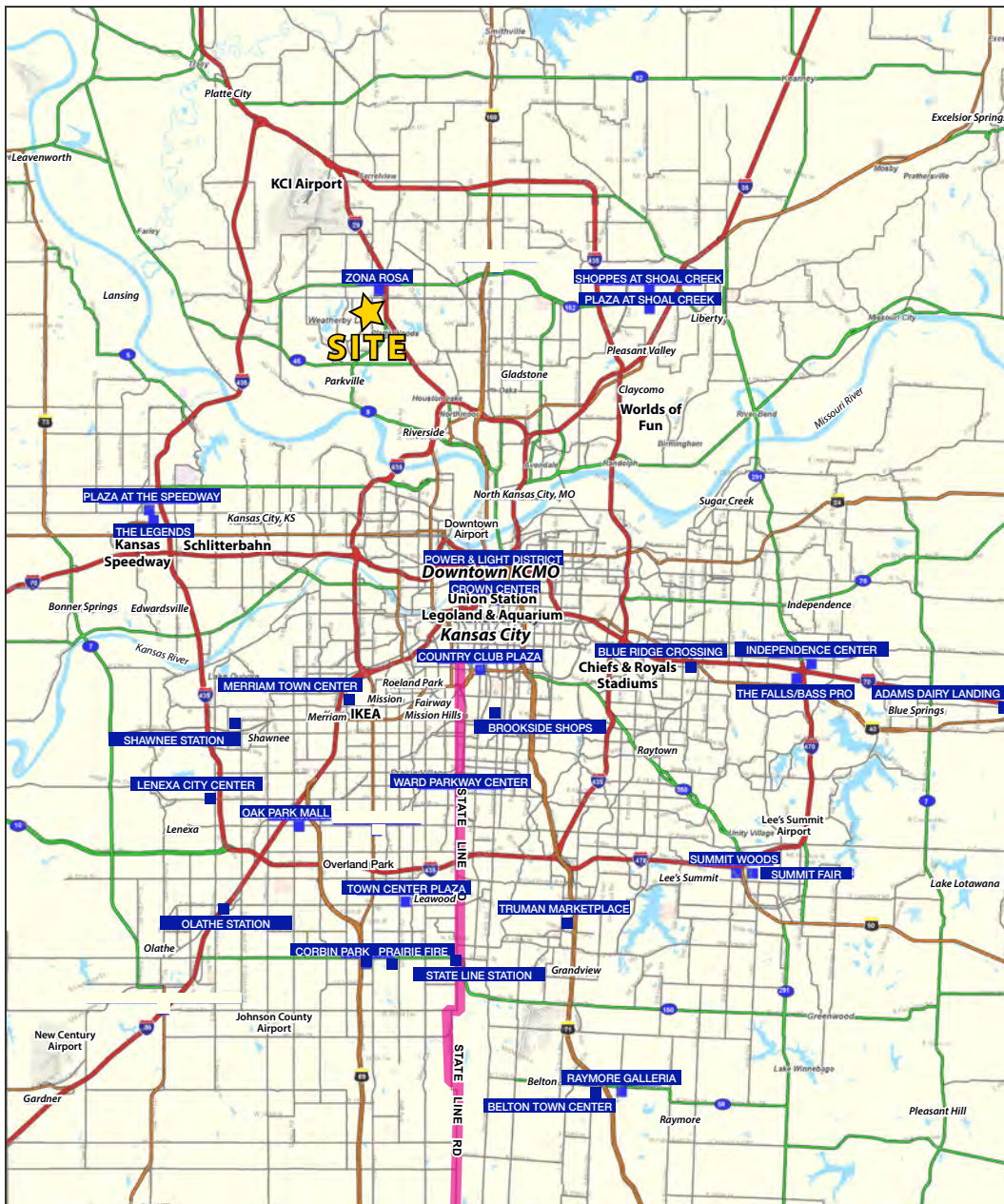
SPACE	TENANT	ADDRESS	SQ
FT			
A	Smoothie King	7121 NW Barry Rd	1,160
B	AVAILABLE	7115 NW Barry Rd	1,300
C	ISMOKE	7113 NW Barry Rd	1,075
D	Moti Mahal Indian Restaurant	7111 NW Barry Rd	1,525
E	AVAILABLE	7107 NW Barry Rd	3,250
F	IXTAPA Mexican Cuisine	7103 NW Barry Rd	1,950
G	Rainbow Chinese Restaurant	7101 NW Barry Rd	2,600



FROLICS PLAZA SHOPPING CENTER

RETAIL SPACE FOR LEASE | I-29 & NW Barry Rd (SWC)
7101 - 7121 NW Barry Road, Kansas City, Missouri

1,300 SF END CAP
3,250 SF IN-LINE
SPACE FOR LEASE





FROLICS PLAZA SHOPPING CENTER

RETAIL SPACE FOR LEASE | I-29 & NW Barry Rd (SWC)
7101 - 7121 NW Barry Road, Kansas City, Missouri

7101 - 7121 NW Barry Road

Kansas City, MO 64153

1 mi radius 3 mi radius 5 mi radius

		1 mi radius	3 mi radius	5 mi radius
POPULATION	2019 Estimated Population	10,108	49,848	96,007
	2024 Projected Population	11,366	56,053	106,999
	2010 Census Population	9,400	43,573	84,411
	2000 Census Population	7,894	35,513	70,957
	Projected Annual Growth 2019 to 2024	2.5%	2.5%	2.3%
	Historical Annual Growth 2000 to 2019	1.5%	2.1%	1.9%
	2019 Median Age	34.9	38.2	37.0
HOUSEHOLDS	2019 Estimated Households	4,660	20,987	39,650
	2024 Projected Households	4,936	22,237	41,889
	2010 Census Households	4,299	18,304	34,704
	2000 Census Households	3,419	14,584	28,722
	Projected Annual Growth 2019 to 2024	1.2%	1.2%	1.1%
	Historical Annual Growth 2000 to 2019	1.9%	2.3%	2.0%
RACE AND ETHNICITY	2019 Estimated White	74.7%	81.7%	80.5%
	2019 Estimated Black or African American	12.5%	8.9%	9.7%
	2019 Estimated Asian or Pacific Islander	5.6%	4.1%	3.9%
	2019 Estimated American Indian or Native Alaskan	0.6%	0.5%	0.5%
	2019 Estimated Other Races	6.7%	4.8%	5.4%
	2019 Estimated Hispanic	9.9%	7.4%	7.6%
INCOME	2019 Estimated Average Household Income	\$75,172	\$96,733	\$90,356
	2019 Estimated Median Household Income	\$68,798	\$80,839	\$77,450
	2019 Estimated Per Capita Income	\$34,654	\$40,742	\$37,353
EDUCATION (AGE 25+)	2019 Estimated Elementary (Grade Level 0 to 8)	2.4%	1.4%	1.7%
	2019 Estimated Some High School (Grade Level 9 to 11)	2.1%	2.5%	4.0%
	2019 Estimated High School Graduate	19.4%	18.5%	21.3%
	2019 Estimated Some College	25.9%	23.2%	23.2%
	2019 Estimated Associates Degree Only	9.8%	9.1%	8.8%
	2019 Estimated Bachelors Degree Only	24.7%	27.9%	25.6%
	2019 Estimated Graduate Degree	15.8%	17.5%	15.4%
BUSINESS	2019 Estimated Total Businesses	701	1,751	3,299
	2019 Estimated Total Employees	7,945	19,508	37,558
	2019 Estimated Employee Population per Business	11.3	11.1	11.4
	2019 Estimated Residential Population per Business	14.4	28.5	29.1

