

# Downtown Menlo Park Office Sublease

855 Oak Grove Avenue, Suite 107, Menlo Park



## ±1,523 Square Feet Available

We are pleased to offer the following space:



- ◆ Available Now
- ◆ Two Private Offices/Meeting Rooms, Open Office Area, and a Kitchen
- ◆ Work Surfaces for 12 - 15 Employees
- ◆ Walking Distance to Caltrain and Numerous Amenities
- ◆ Perfect Start-Up Space
- ◆ Excellent Natural Light
- ◆ Ground Floor Space
- ◆ LED 12/31/18
- ◆ Asking \$4.95 FS

**Anne Ralston** Senior Managing Director 408.982.8466 [aralston@ngkf.com](mailto:aralston@ngkf.com) CA RE License #00957374

**John McKenna** Senior Managing Director 650.688.8548 [jmckenna@ngkf.com](mailto:jmckenna@ngkf.com) CA RE License #01276576

**Newmark  
Knight Frank**

2804 Mission College Boulevard., Suite 120, Santa Clara, CA 95054 [www.ngkf.com](http://www.ngkf.com)

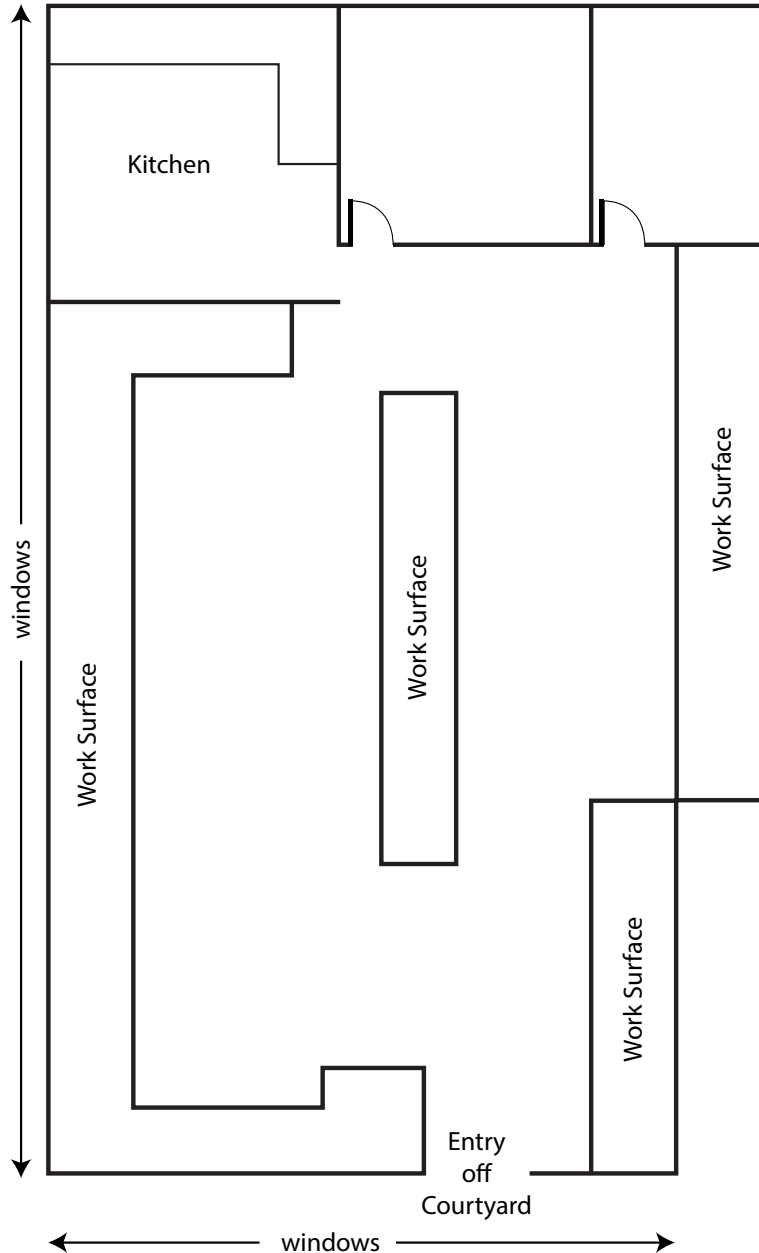
# Downtown Menlo Park Office Sublease

855 Oak Grove Avenue, Suite 107, Menlo Park



## Premises Floor Plan\*

\* Most but Not All Equipment is Still in Place



**Anne Ralston** Senior Managing Director 408.982.8466 [aralston@ngkf.com](mailto:aralston@ngkf.com) CA RE License #00957374

**John McKenna** Senior Managing Director 650.688.8548 [jmckenna@ngkf.com](mailto:jmckenna@ngkf.com) CA RE License #01276576

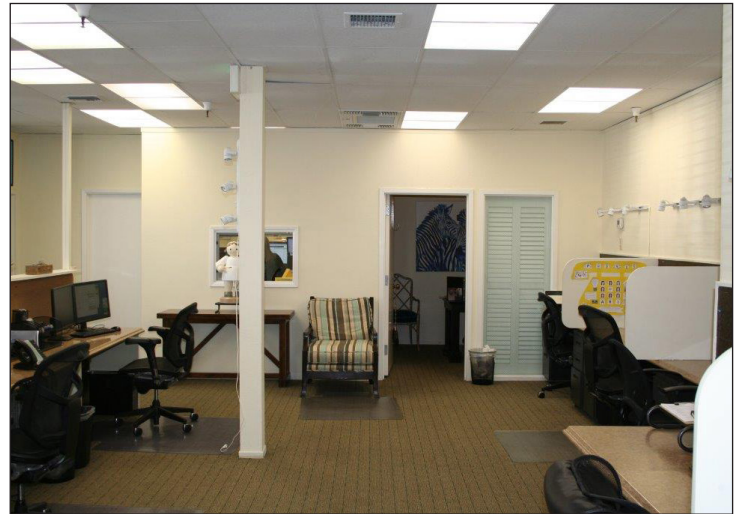
**Newmark  
Knight Frank**

2804 Mission College Boulevard., Suite 120, Santa Clara, CA 95054 [www.ngkf.com](http://www.ngkf.com)



# Downtown Menlo Park Office Sublease

855 Oak Grove Avenue, Suite 107, Menlo Park



**Anne Ralston** Senior Managing Director 408.982.8466 [aralston@ngkf.com](mailto:aralston@ngkf.com) CA RE License #00957374

**John McKenna** Senior Managing Director 650.688.8548 [jmckenna@ngkf.com](mailto:jmckenna@ngkf.com) CA RE License #01276576

**Newmark  
Knight Frank**

2804 Mission College Boulevard., Suite 120, Santa Clara, CA 95054 [www.ngkf.com](http://www.ngkf.com)