



RIVER PARK OFFICE BUILDING

1199 SHORELINE DRIVE, BOISE, ID 83704

OFFICE

FOR LEASE



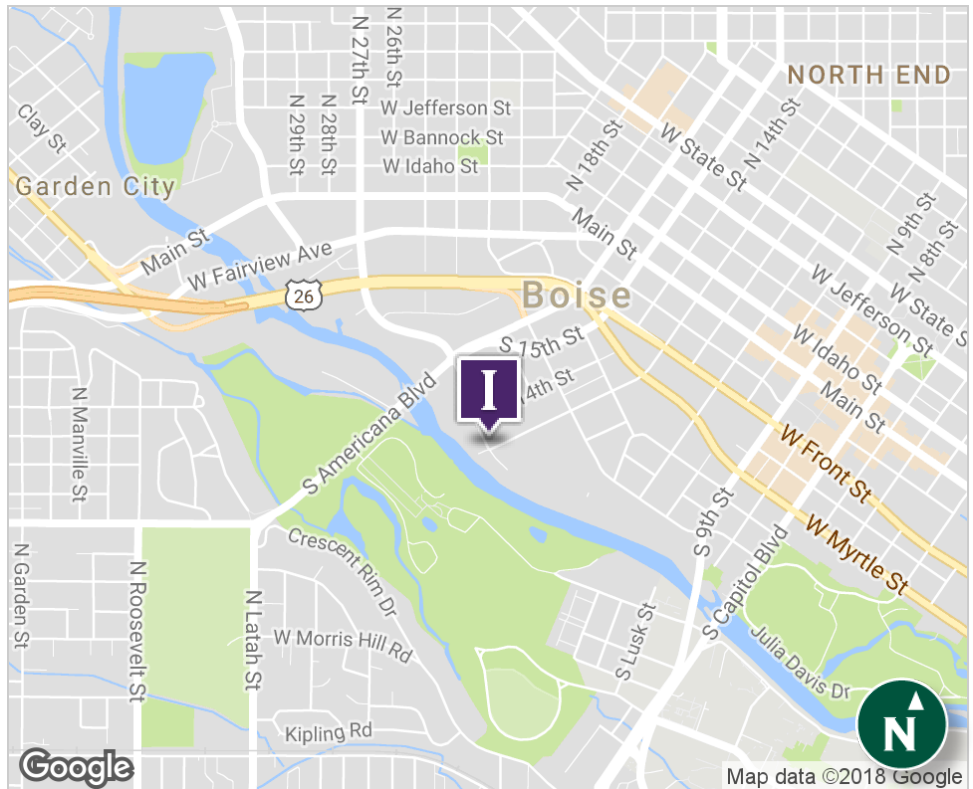
PROPERTY HIGHLIGHTS

- Available Immediately
- Class A
- 3-5 years preferred term
- Located on the Boise Greenbelt
- Views of Boise Mountains and overlooks Boise River
- Existing medical Suite w/its own restroom and procedure room.
- Also set up for professional office

PROPERTY INFORMATION:

Available SF: **1,703 - 2,525 SF**
 Lease Rate: **\$19.50 SF/yr**
 Lease Type: **Full Service**
 Lot Size: **0.95 Acres**
 Building Size: **24,483 SF**
 Building Class: **A**
 Zoning: **R-ODD**

SPACE	SIZE (SF)	LEASE RATE
250	1,703 SF	\$19.50 SF/YR
310	2,525 SF	\$19.50 SF/YR



380 E. Parkcenter Boulevard
 Suite 290
 Boise, ID 83706
www.icrellc.com
 (208) 429.8603 / office / (208) 429-8604 fax

Jim Hosac
 jim@icrellc.com
 o / 208.922.6681
 c / 208.850.8470

Guy Livingston, SIOR
 guy@icrellc.com
 o / 208.286.2262
 c / 208.830.4420

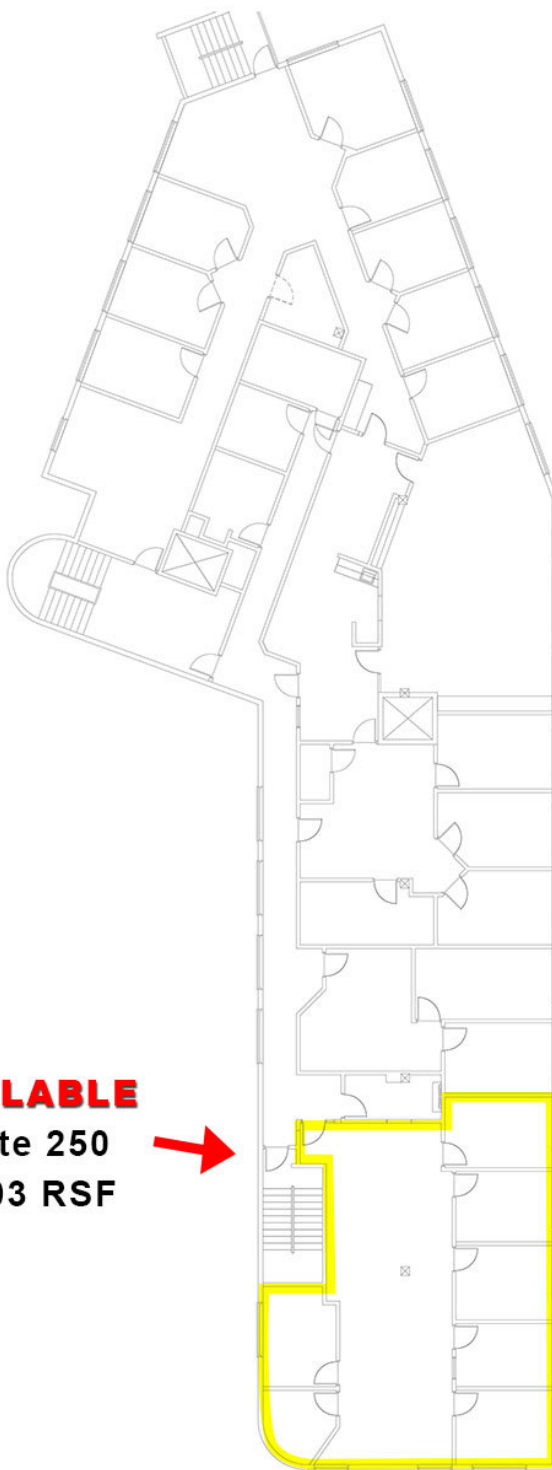
LISTING AGENTS:



RIVER PARK OFFICE BUILDING

1199 SHORELINE DRIVE, BOISE, ID 83704

SECOND FLOOR



AVAILABLE

Suite 250

1,703 RSF



OFFICE



INTERMOUNTAIN
COMMERCIAL REAL ESTATE

380 E. Parkcenter Boulevard

Suite 290

Boise, ID 83706

www.icrellc.com

(208) 429.8603 / office / (208) 429-8604 fax

Jim Hosac
jim@icrellc.com
o / 208.922.6681
c / 208.850.8470

Guy Levingston, SIOR
guy@icrellc.com
o / 208.286.2262
c / 208.830.4420

LISTING AGENTS:



RIVER PARK OFFICE BUILDING

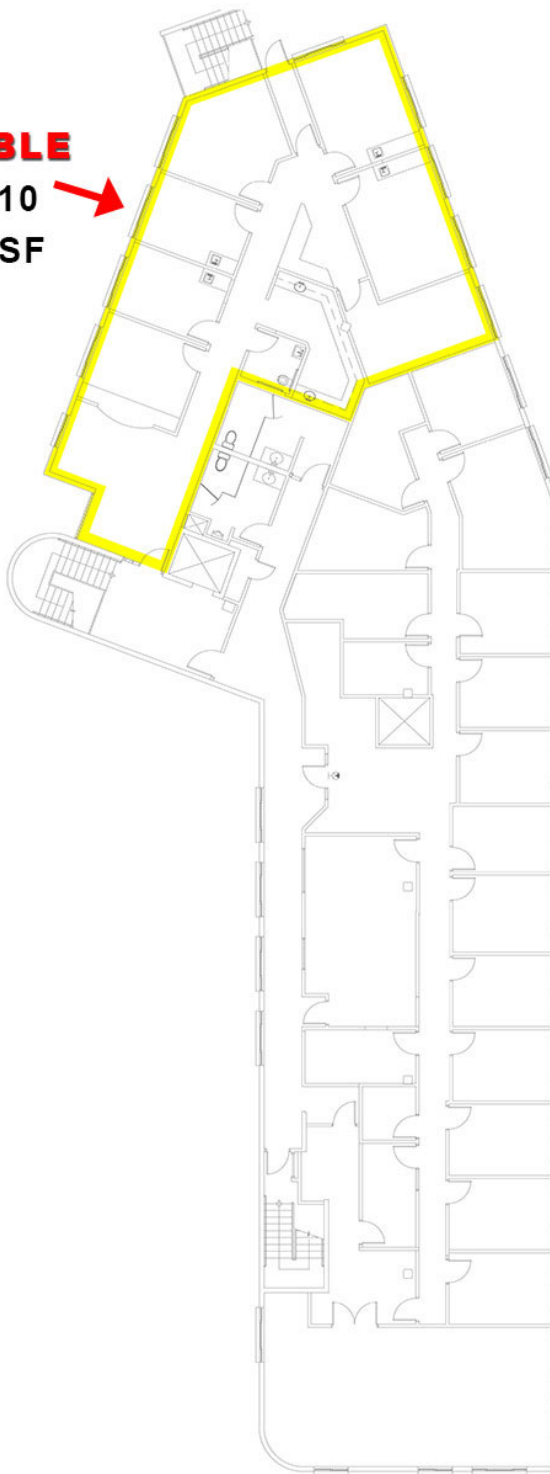
1199 SHORELINE DRIVE, BOISE, ID 83704

THIRD FLOOR

AVAILABLE

Suite 310

2,525 RSF



OFFICE



INTERMOUNTAIN
COMMERCIAL REAL ESTATE

380 E. Parkcenter Boulevard

Suite 290

Boise, ID 83706

www.icrellc.com

(208) 429.8603 / office / (208) 429-8604 fax

Jim Hosac
jim@icrellc.com
o / 208.922.6681
c / 208.850.8470

Guy Levingston, SIOR
guy@icrellc.com
o / 208.286.2262
c / 208.830.4420

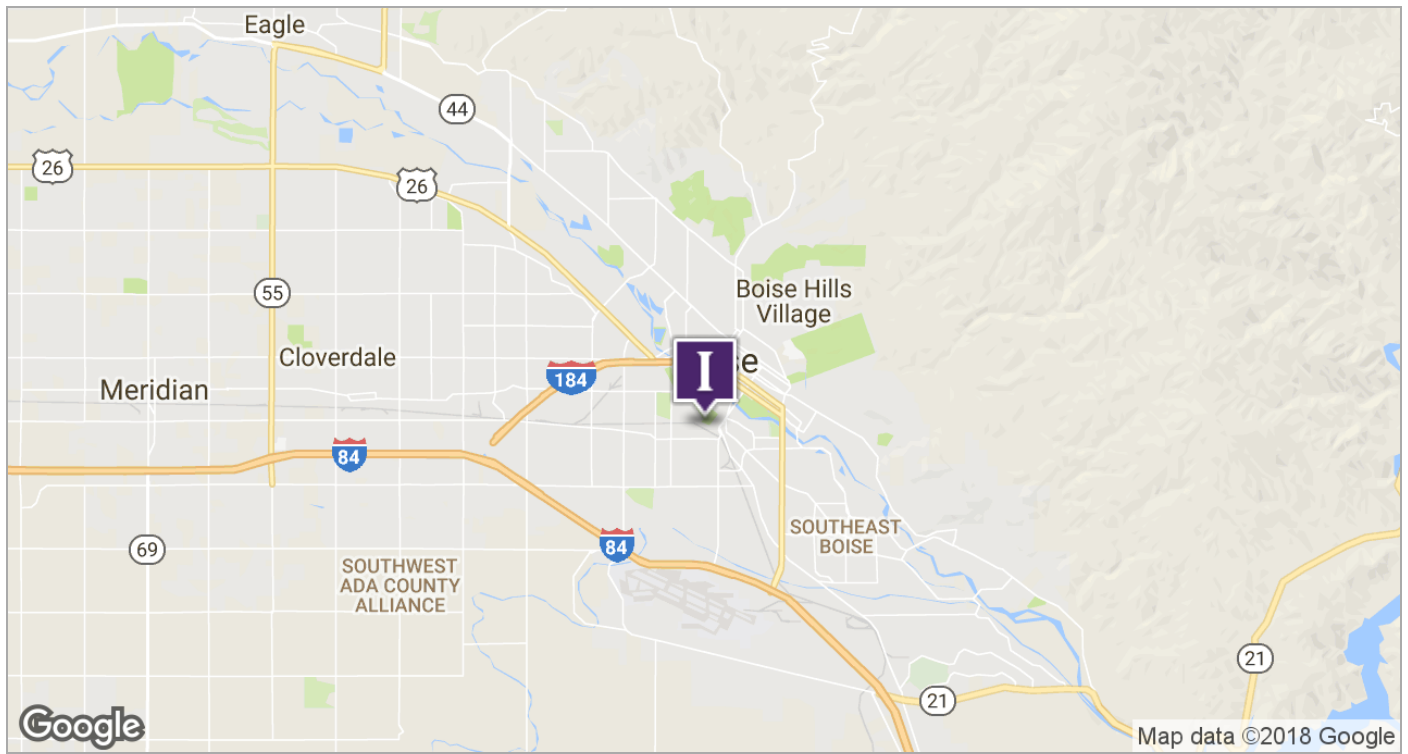
LISTING AGENTS:



RIVER PARK OFFICE BUILDING

1199 SHORELINE DRIVE, BOISE, ID 83704

LOCATION MAPS



OFFICE



INTERMOUNTAIN
COMMERCIAL REAL ESTATE

380 E. Parkcenter Boulevard
Suite 290
Boise, ID 83706

www.icrellc.com

(208) 429.8603 / office / (208) 429-8604 fax

Jim Hosac
jim@icrellc.com
o / 208.922.6681
c / 208.850.8470

Guy Levingston, SIOR
guy@icrellc.com
o / 208.286.2262
c / 208.830.4420

LISTING AGENTS: