

1112 WEST WYOMISSING BLVD

WEST LAWN, PA

±2.68 ACRES FOR SALE OR LEASE

JOIN

weis **weis**
GAS N' GO

ANYTIME
FITNESS

SUPERCUTS



property highlights.

- Access from ±62,000 SF Weis
- Convenient access and great visibility off of Route 222 & Route 724
- Pylon visibility from Route 222 & Route 724
- Owned and Managed by: **weis**



stats.

2018 DEMOGRAPHICS*	1 MILE	3 MILES	5 MILES
EST. POPULATION	13,088	72,581	173,236
EST. HOUSEHOLDS	5,374	29,430	63,416
EST. AVG. HH INCOME	\$85,179	\$87,977	\$68,753

ROUTE 724 (REVERE BOULEVARD) TRAFFIC COUNT: 22,739 VPD *ESRI 2018
ROUTE 222 TRAFFIC COUNT: 18,000 VPD



METRO[®]
COMMERCIAL
REAL ESTATE, INC.

MetroCommercial.com | PHILADELPHIA, PA | PLYMOUTH MEETING, PA | MOUNT LAUREL, NJ | NAPLES, FL

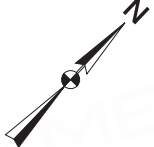
get in touch.

PAT GALLAGHER

office 610.825.5222
direct 610.260.2676

pgallagher@metrocommercial.com

222 18,000 VPD



PYLON

weis

weis
GAS N' GO

WEIS EXPANSION AREA
SALON CENTRIC
NAIL SALON
SUPERCUTS
ANYTIME FITNESS

REVERE BOULEVARD 22,739 VPD

WEST WYOMISSING BLVD 4,375 VPD

724

PYLON

AVAILABLE

SITE

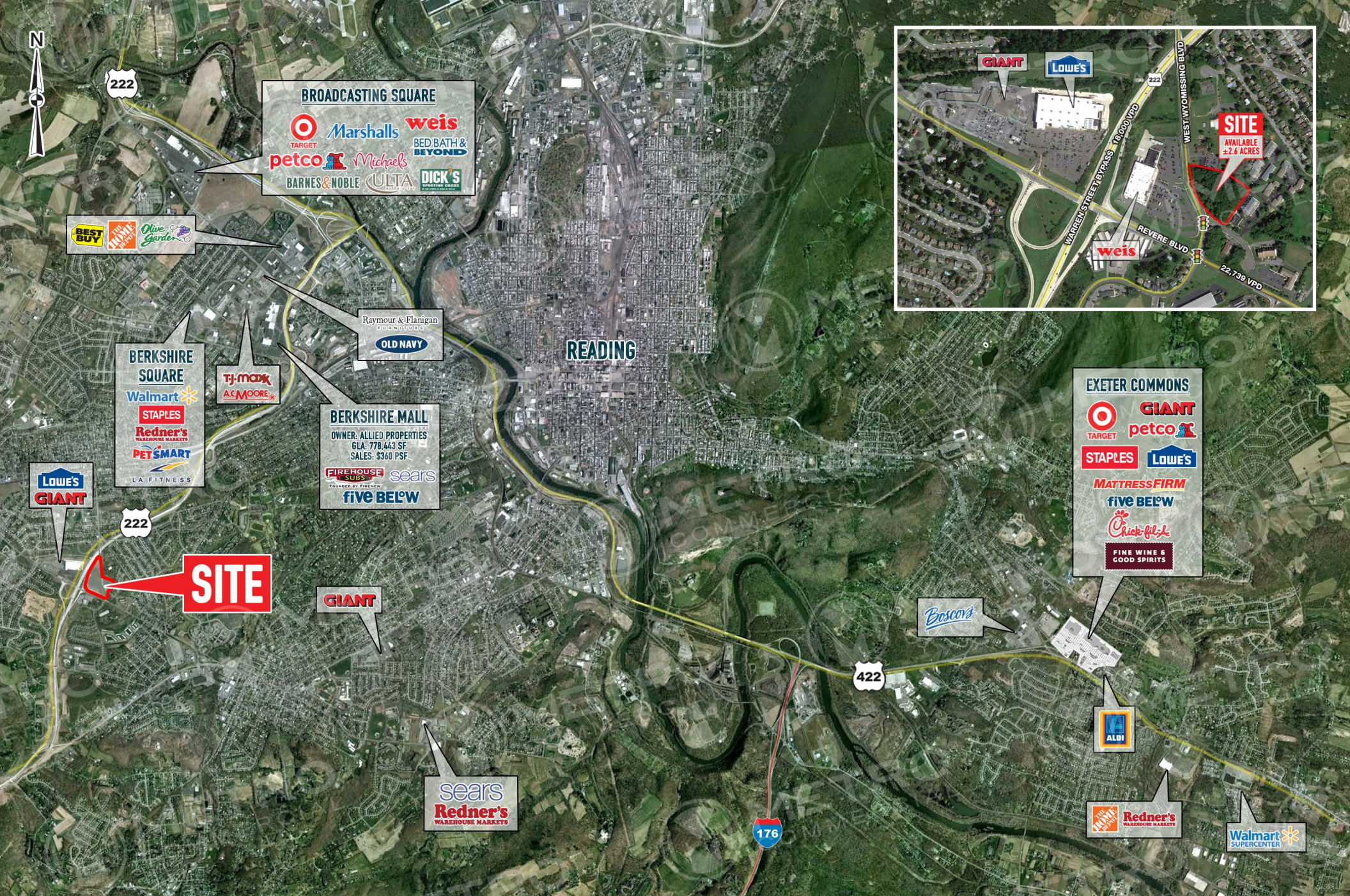
**AVAILABLE
±2.68 ACRES
FOR SALE OR LEASE**



The information and images contained herein are from sources deemed reliable. However, Metro Commercial Real Estate, Inc. makes no representation whatsoever as to their accuracy or authenticity. Images shown may be modified for illustrative purposes. Images may be out-of-date and not current. 7.19.17

**1112 WEST WYOMISSING BLVD
WEST LAWN, PA**





The information and images contained herein are from sources deemed reliable. However, Metro Commercial Real Estate, Inc. makes no representation whatsoever as to their accuracy or authenticity. Images shown may be modified for illustrative purposes. Images may be out-of-date and not current. 7.19.17

1112 WEST WYOMISSING BLVD
WEST LAWN, PA

