

# Mayfair Plaza

NE Hwy 99 & NE Evans St, McMinnville, OR 97128

View  
Online:



Mayfair Plaza has recently been beautifully renovated and expanded with a brand new multi tenant retail building, updated façade to the pre-existing building and contemporary landscaping. The center is anchored by Grocery Outlet and has excellent building signage and vehicle access. The vacant space is an endcap along Hwy 99 with visible signage and street front windows.



**Available:**

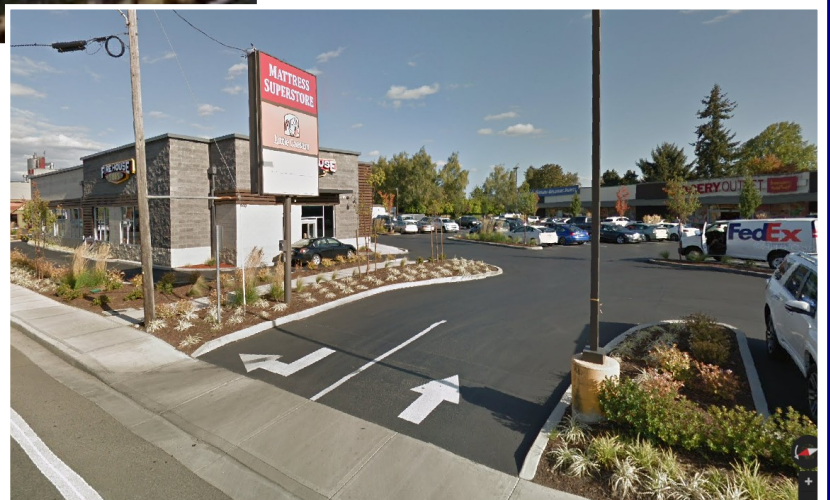
**1,175 SF**

**\$36.00 SF/Year, NNN**

**\$4.95 NNN**

**Demographics**

	1 Mile	3 Mile	5 Mile
<b>Population:</b>	11,498	35,301	43,761
<b>Average HH Income:</b>	\$70,905	\$71,970	\$73,321

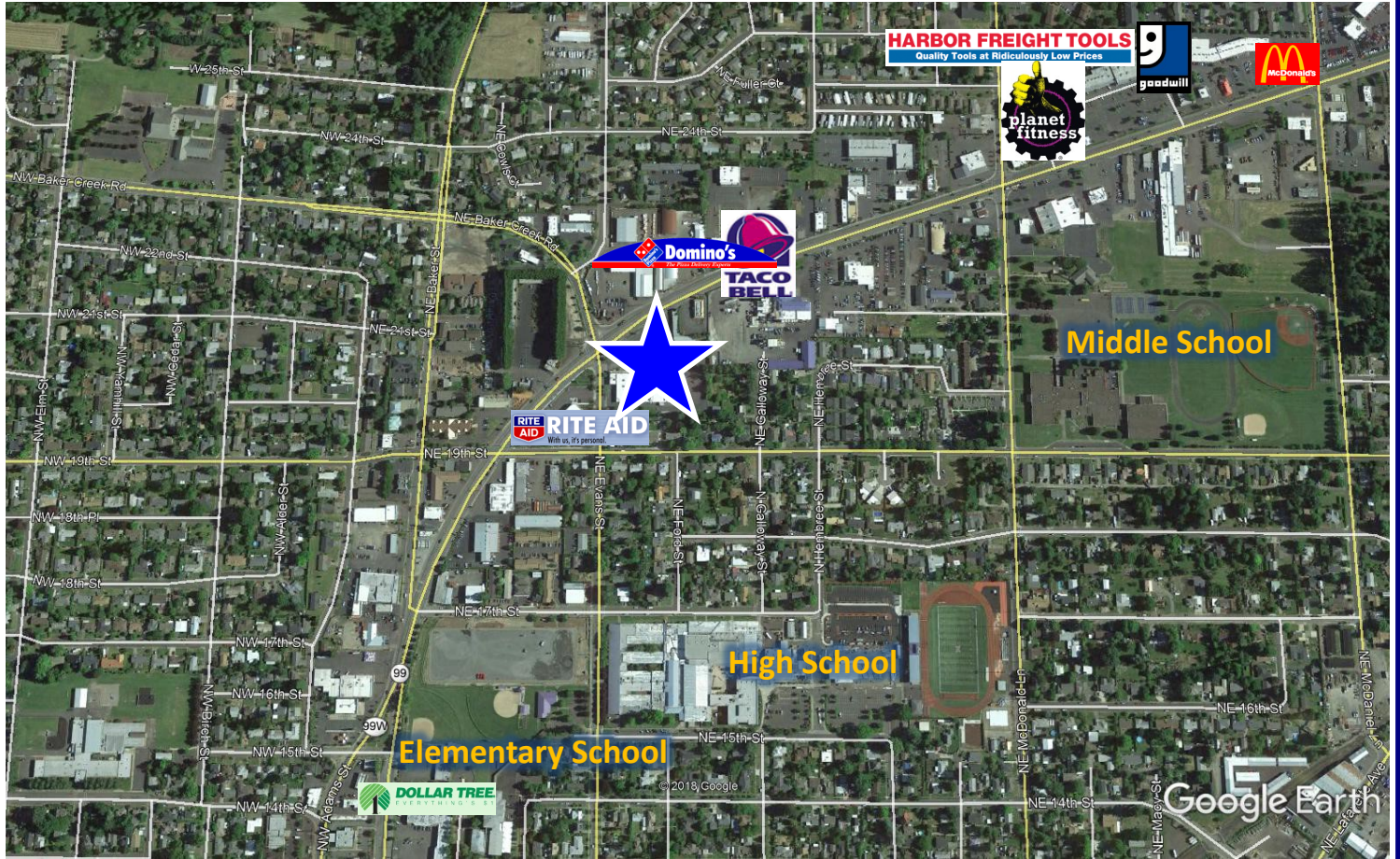


503.675.0900 | Paul Miller | 503.616.2943 D | Email: paul@barnardcommercial.com  
www.barnardcommercial.com | Mail: 6650 SW Redwood Lane Suite 330, Portland OR 97224

Results Driven Retail Solutions<sup>SM</sup>

Barnard Commercial  
Real Estate

# Mayfair Plaza



503.675.0900 | Paul Miller | 503.616.2943 D | Email: paul@barnardcommercial.com  
www.barnardcommercial.com | Mail: 6650 SW Redwood Lane Suite 330, Portland OR 97224

All information contained herein was obtained from sources deemed reliable. No guarantee is made with respect to accuracy. Specifications subject to change without notice.