



# For Lease

## Interchange Corporate Center

Available immediately:

- First floor: 6,814 s.f.
- Third floor: 6,947 s.f.
- Class A office space
- Fitness Center in the building
- Two story atrium lobby with stone, steel and wood finishes
- State of the art energy management system
- Basement storage/humidity controlled space
- Conveniently located to all major highways, public transportation, newly renovated Plymouth Meeting Mall, shops and restaurants

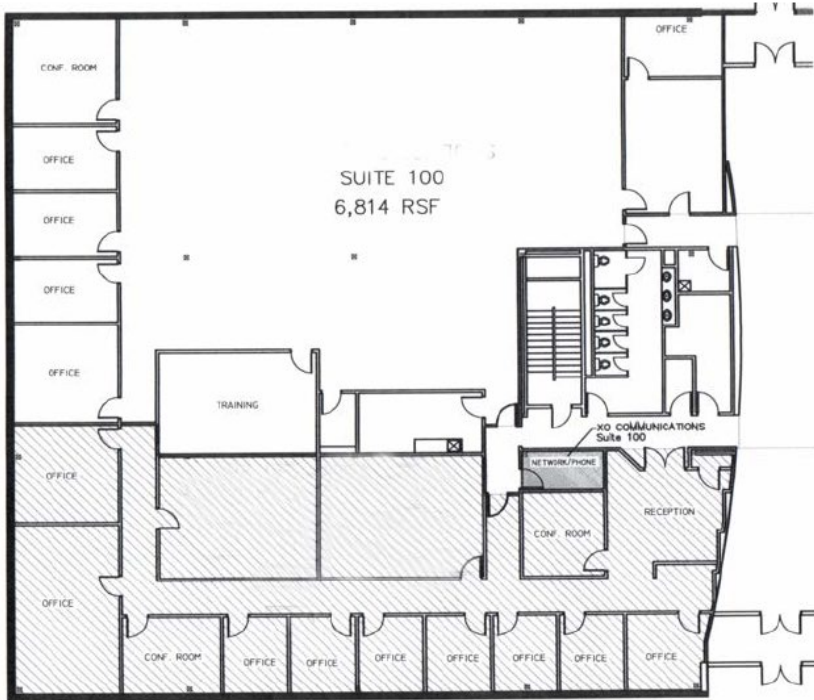
450 Plymouth Road  
Plymouth Meeting, PA

**John Perkins**  
Executive Vice President  
+1 610 249 2263  
john.perkins@am.jll.com

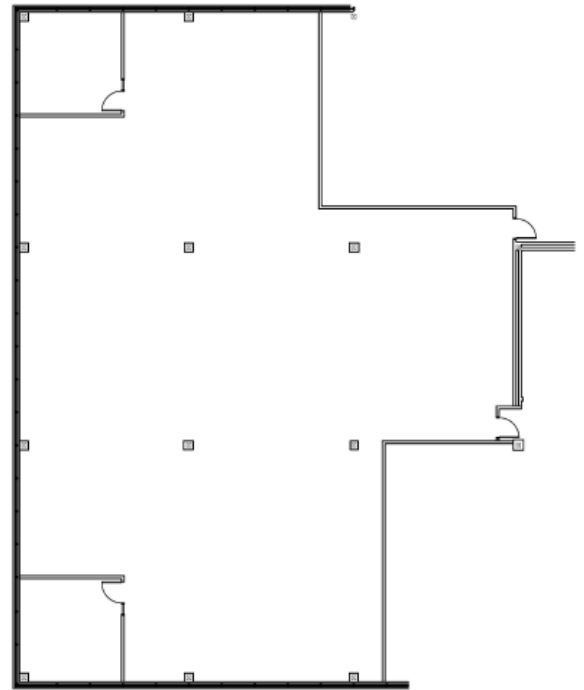
**JLL | Jones Lang LaSalle**  
1235 Westlakes Drive  
Suite 210  
Berwyn, PA 19312  
+1 610 249 2255  
[www.jll.com/philadelphia](http://www.jll.com/philadelphia)



First Floor  
6,814 s.f.



Third Floor  
6,947 s.f.



## 450 Plymouth Road Plymouth Meeting, PA

Contact information:  
John Perkins  
Executive Vice President  
[john.perkins@am.jll.com](mailto:john.perkins@am.jll.com)  
+1 610 249 2263