

13815 RIDGEDALE

13815 RIDGEDALE DRIVE | MINNETONKA, MN



FOR SALE OR LEASE



SPACE AVAILABLE

5,000 SF

PARCEL SIZE:

0.73 ACRES

SALE PRICE:

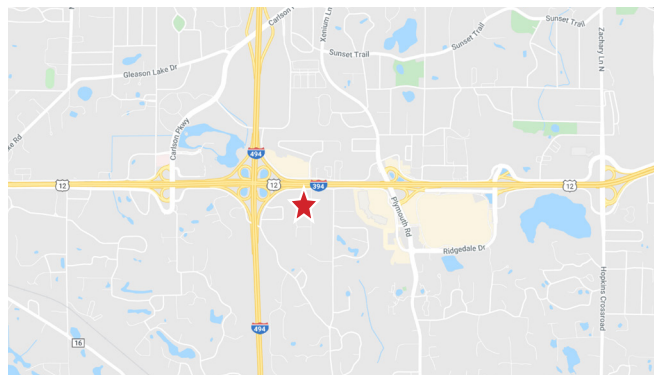
\$850,000

LEASE RATE:

\$15.00 PSF GROSS
+ UTILITIES

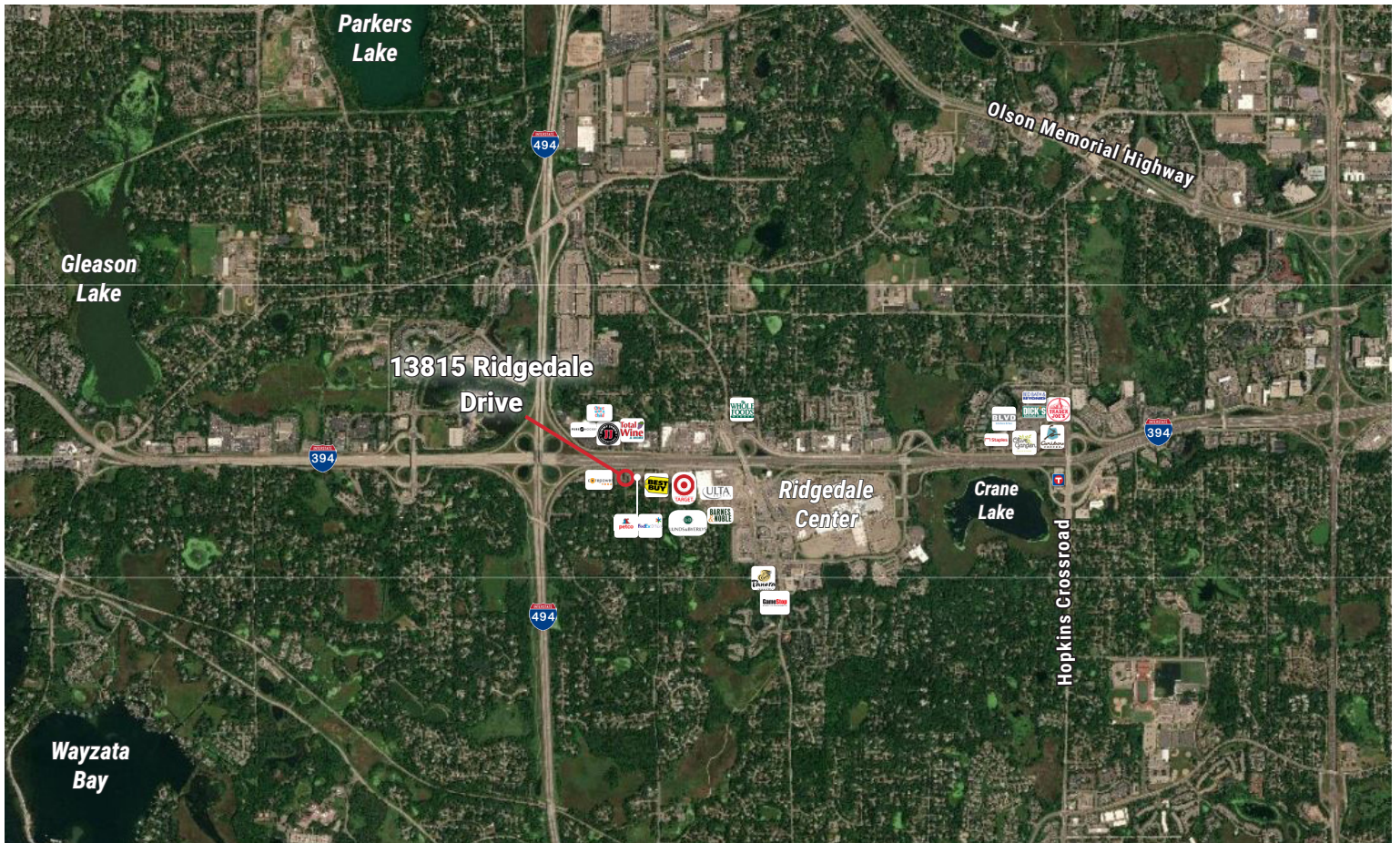
PROPERTY HIGHLIGHTS

- Unique stand alone office building in a wooded setting
- Monument signage available with 394 visibility
- Vaulted ceilings
- Outdoor patio space
- Ample parking
- Immediate access to I-394 & I-494
- Close proximity to Ridgedale Mall and area amenities



13815 RIDGEDALE DRIVE

MINNETONKA, MN



MATT ELDER CCIM
Associate Director
T +1 612 430 9974
matt.elder@ngkf.com

CALLIE RONKOWSKI
Associate
T +1 612 430 9975
callie.ronkowski@ngkf.com

www.ngkf.com

The information contained herein has been obtained from sources deemed reliable but has not been verified and no guarantee, warranty or representation, either express or implied, is made with respect to such information. Terms of sale or lease and availability are subject to change or withdrawal without notice.

