

525 North Mur-Len Road

Olathe, Kansas, 66062

For Sale

Owner User or Investment Opportunity



Excellent Location

- Office Condo
- 1,800 SF
- Month to Month Tenant
- Great highway Access

For more information:

Keiten J. Nuspl
816.932.5531
knuspl@blockllc.com

The information contained in this marketing flyer is presented as general information only. Block Real Estate Services, LLC makes no representation as to its accuracy. This information is not intended as legal, financial or real estate advice and must not be relied upon as such. You should make your own inquiries, obtain independent inspections, and seek professional advice tailored to your specific circumstances before making any legal, financial or real estate decisions.

4622 Pennsylvania Avenue, Suite 700
Kansas City, MO 64112
816.756.1400 | www.BLOCKLLC.com

BLOCK
REAL ESTATE SERVICES, LLC

Building Specifications

Square Feet:	1,800
Land:	1,742 SF, 0.04 AC
Zoning:	CP1
Parcel:	DP69800000-0525
Amenities:	24 Hour Access, Air Conditioning, Bus Line, Partitioned Offices
County:	Johnson
Construction:	Reinforced Concrete
Year Built:	1984
Stories:	1
Legal Description:	SOMERSET VILLAGE EIGHTH PLAT LT 525 & AN UNDIVIDED INT IN COMMON AREA OLC 621 3D 6 525
HOA:	\$250/Month
Taxes:	\$5,271
Insurance:	\$1,042

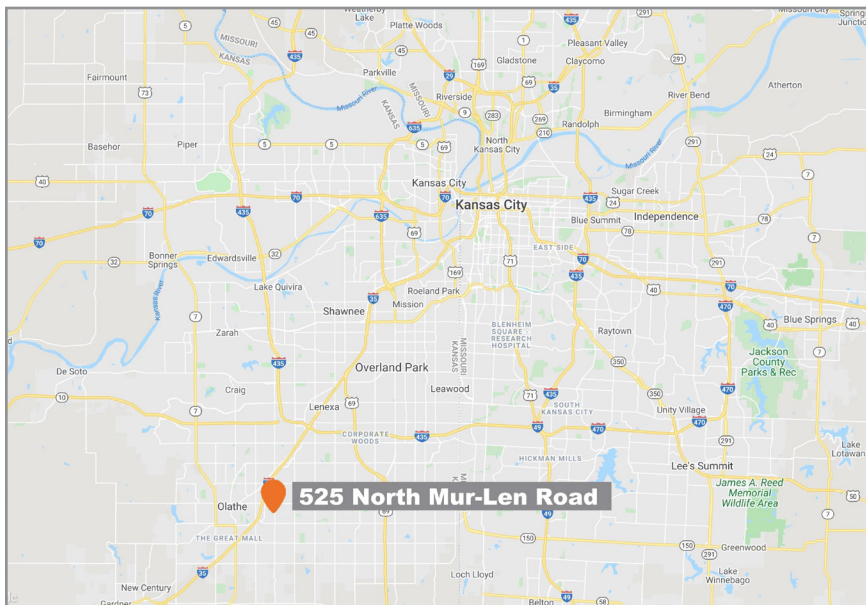
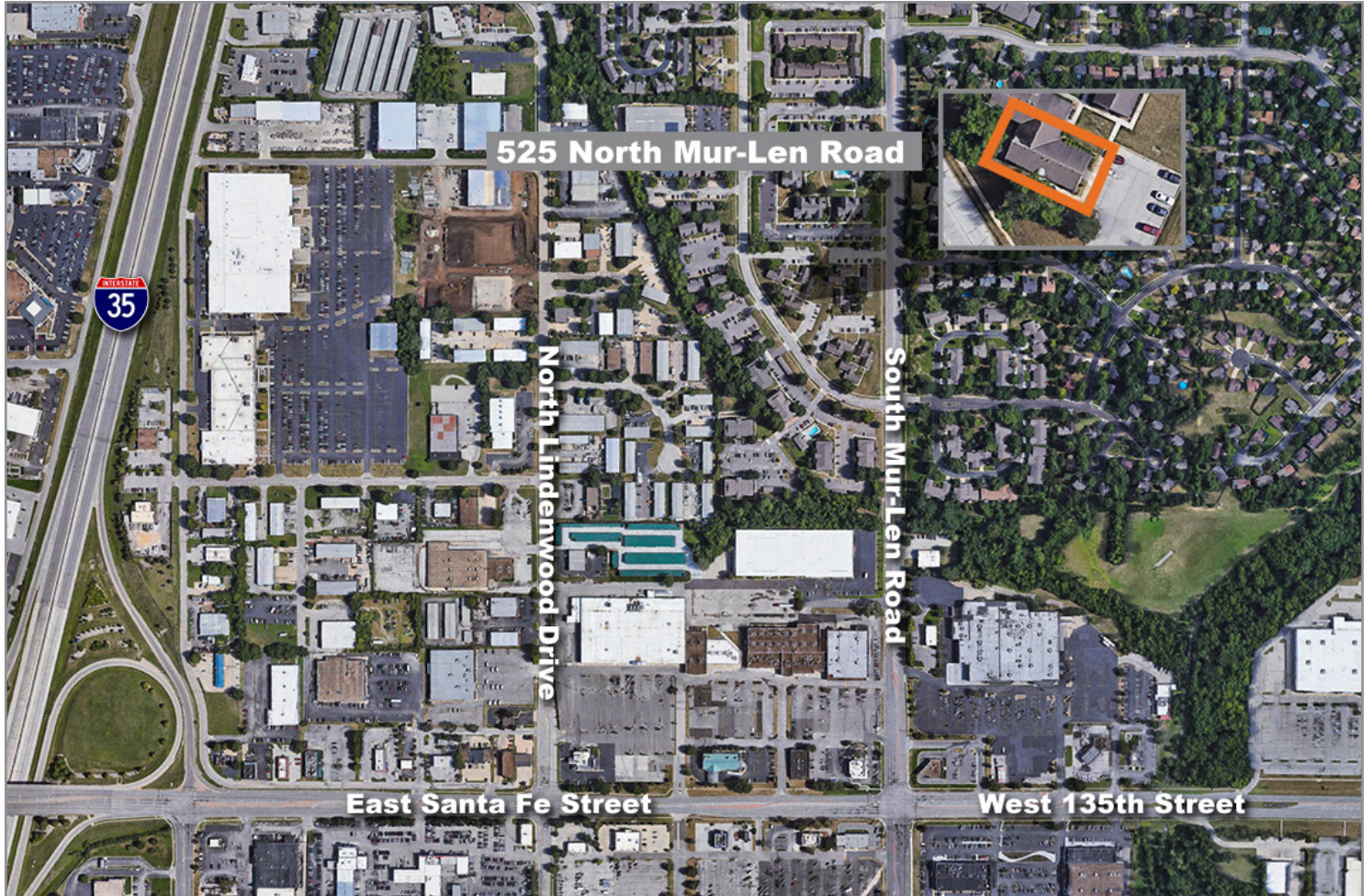
For more information:

Keiten J. Nuspl
816.932.5531
knuspl@blockllc.com

525 North Mur-Len Road

Olathe, Kansas, 66062

For Sale



For more information:

Keiten J. Nuspl
816.932.5531
knuspl@blockllc.com