

# FOR LEASE

WWW.INSITEREALTY.COM

## BELTWAY CROSSING 2

31,432 SQUARE FEET



13770 HOLLISTER, SUITE 190  
HOUSTON, TEXAS

[CLICK HERE FOR VIRTUAL TOUR](#)

## PROPERTY FEATURES

<b>SQUARE FEET:</b>	31,432 SF
<b>MAX CONTIGUOUS:</b>	31,432 SF
<b>MINIMUM DIVISIBLE:</b>	31,432 SF
<b>OFFICE:</b>	2,983 SF
<b>TOTAL WAREHOUSE:</b>	24,238 SF
<b>HVAC WAREHOUSE:</b>	4,211 SF
<b>CONFIGURATION:</b>	SIDE LOAD
<b>CLEAR HEIGHT:</b>	24'
<b>SPRINKLER SYSTEM:</b>	CLASS IV ELO
<b>DOCK DOORS:</b>	6
<b>DRIVE-IN DOORS:</b>	1 (12' X 14')
<b>PARKING SPACES:</b>	35
<b>TRUCK COURT:</b>	120'
<b>TRUCK APRON:</b>	CAN BE FENCED TO CREATE 0.45 AC OF OUTSIDE STORAGE
<b>TYPICAL BAY:</b>	50' X 45'



FOR MORE INFORMATION PLEASE CONTACT

LOGAN GREER • LGREER@INSITEREALTY.COM • 713.339.5363

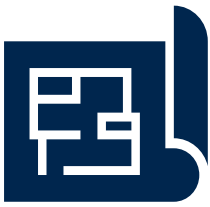
DAYNE WUNDERLICH • DWUNDERLICH@INSITEREALTY.COM • 713.339.5329

A PROJECT OF

**EASTGROUP**  
PROPERTIES

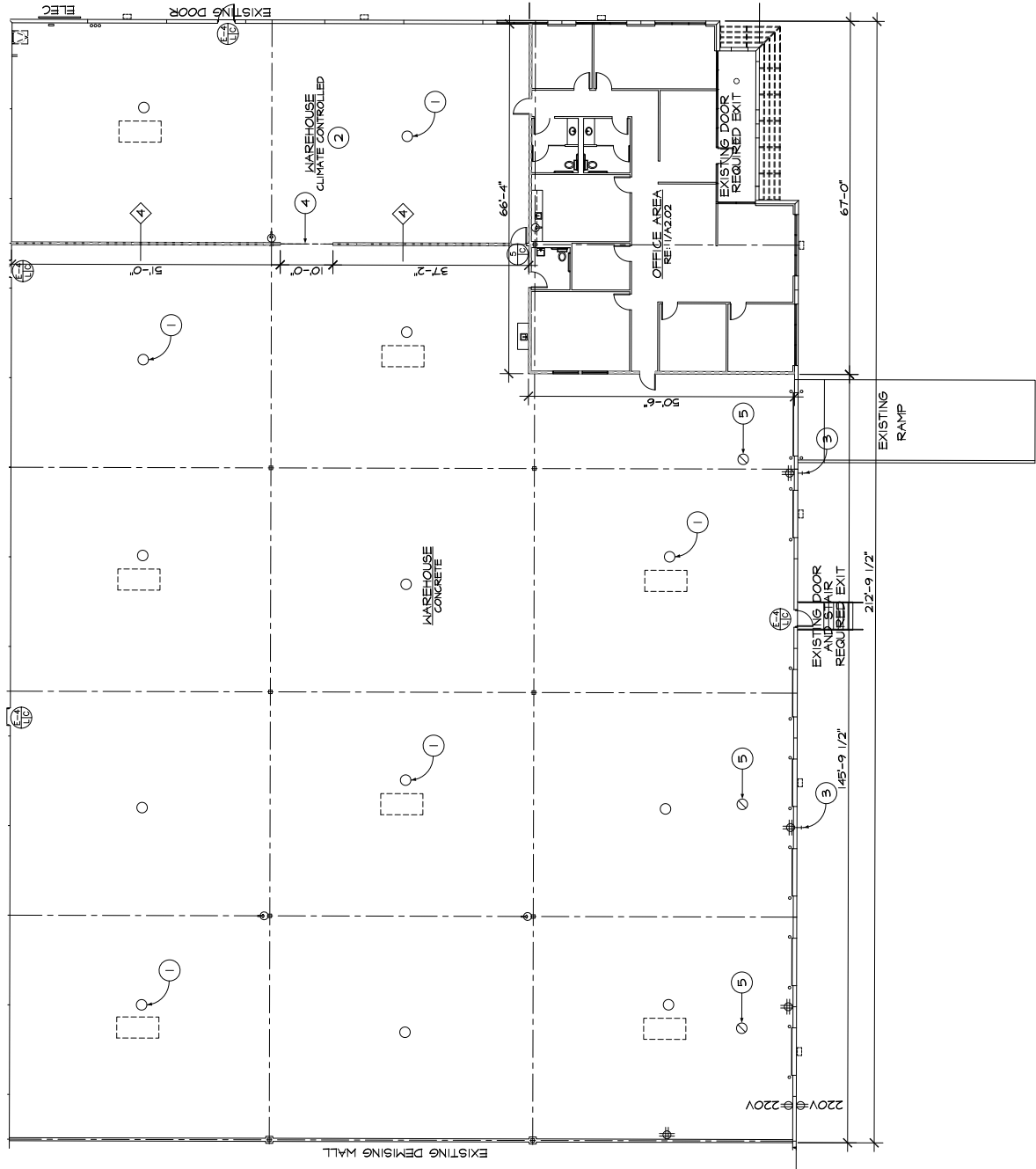
**INSITE**

The information contained herein was obtained from sources believed reliable; however, InSite Realty Partners, L.P. makes no guarantees, warranties or representations as to the completeness or accuracy thereof. The presentation of this property is submitted subject to errors, omissions, change of price or conditions, prior sale or lease, or withdrawal without written notice.



# BELTWAY CROSSING 2

## FLOOR PLAN



FOR MORE INFORMATION PLEASE CONTACT

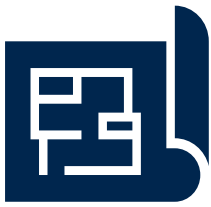
LOGAN GREER • LGREER@INSITEREALTY.COM • 713.339.5363

DAYNE WUNDERLICH • DWUNDERLICH@INSITEREALTY.COM • 713.339.5329

A PROJECT OF

**EASTGROUP**  
PROPERTIES





# BELTWAY CROSSING 2

## AERIAL



FOR MORE INFORMATION PLEASE CONTACT

LOGAN GREER • LGREER@INSITEREALTY.COM • 713.339.5363

DAYNE WUNDERLICH • DWUNDERLICH@INSITEREALTY.COM • 713.339.5329

A PROJECT OF

**EASTGROUP**  
PROPERTIES

The information contained herein was obtained from sources believed reliable; however, InSite Realty Partners, L.P. makes no guarantees, warranties or representations as to the completeness or accuracy thereof. The presentation of this property is submitted subject to errors, omissions, change of price or conditions, prior sale or lease, or withdrawal without written notice.

