

655

FIFTH

1 EAST 52ND STREET

CLASS A OFFICE SPACE FOR LEASE

PRIME BOUTIQUE PLAZA DISTRICT LOCATION

FLOOR	AREA	AVAILABLE
Partial 3rd Floor	5,959 RSF	Immediate
Partial 6th Floor	4,026 RSF	Immediate

RENTAL RATE:	Available upon request
ELECTRIC:	\$3.50/RSF
TERM:	5 - 10 Years

SPACE FEATURES

- Boutique Plaza District Building
- Great natural light and 5th Avenue views
- Above standard finishes with wood-glass partitioning/pantry/full height wood doors
- Conveniently located to mass transit and preeminent shopping district
- Quality Tenant Roster



For More Information, Please Contact:

BARRY ZELLER

(212) 841-5913
barry.zeller@cushwake.com

ANDREW ROSS

(212) 841-7896
andrew.ross@cushwake.com

BARRY GARFINKLE

(212) 328-4225
barry.garfinkle@cushwake.com



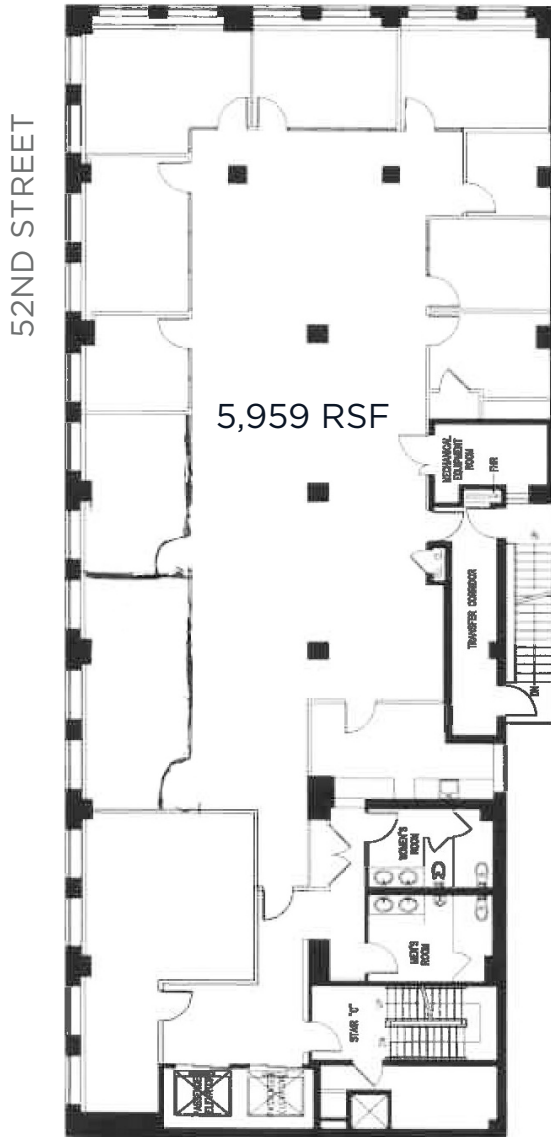
A full commission computed and earned in accordance with the rates and conditions of our agency agreement with our principal, when received from our principal, will be paid to the cooperating broker who consummates a lease which is unconditionally executed and delivered by and between lessor and lessee (a copy of the rates and conditions referred to above is available upon request).



FLOOR PLANS

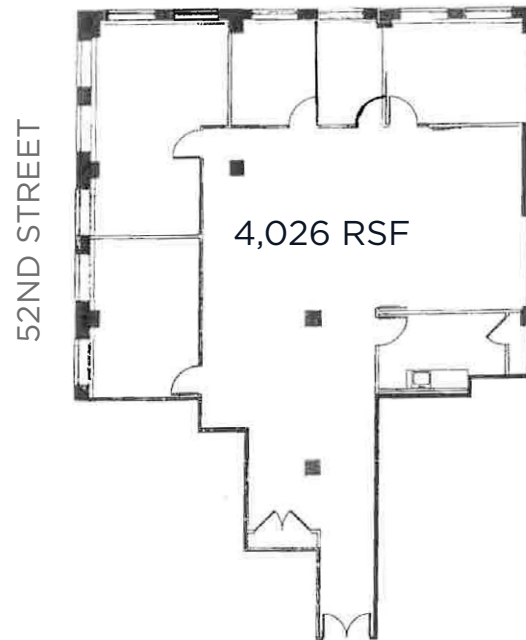
PARTIAL 3RD FLOOR

FIFTH AVENUE



PARTIAL 6TH FLOOR

FIFTH AVENUE



For More Information, Please Contact:

BARRY ZELLER
(212) 841-5913
barry.zeller@cushwake.com

ANDREW ROSS
(212) 841-7896
andrew.ross@cushwake.com

BARRY GARFINKLE
(212) 328-4225
barry.garfinkle@cushwake.com

