



FOR SALE

0 London Avenue

Marysville, OH 43040

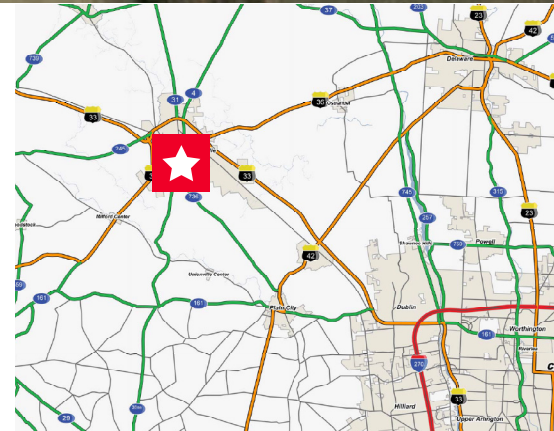


+/- 7.5 Acres
Sale Price: Negotiable

Property Highlights

- Corner site
- All utilities present at site
- New medical office next door
- Up to 16,000 cars per day on SR 736 and London Avenue
- Demographics:

	1 Mile	3 Miles	5 Miles
Population	3,250	18,500	28,843
Median HH Income	\$41,800	\$48,000	\$60,292



Luke Streng

Director
+1 614 827 1722
luke.streng@cushwake.com

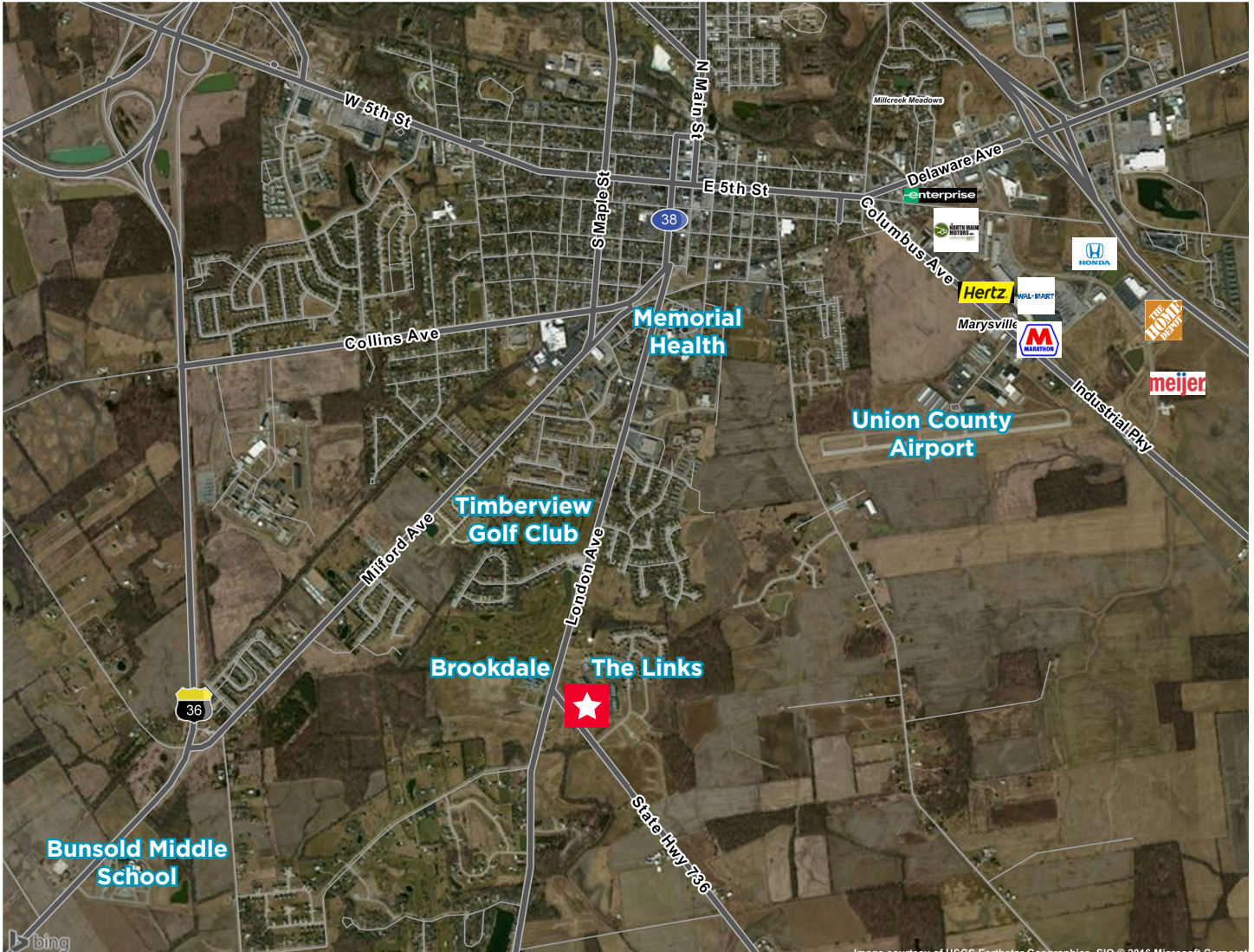
Doug Falor, SIOR

Senior Director
+1 614 241 4705
doug.falor@cushwake.com

325 John H. McConnell Blvd., Suite 450
Columbus, Ohio
main +1 614 241 4700
fax +1 614 241 4701
cushmanwakefield.com

Cushman & Wakefield Copyright 2015. No warranty or representation, express or implied, is made to the accuracy or completeness of the information contained herein, and same is submitted subject to errors, omissions, change of price, rental or other conditions, withdrawal without notice, and to any special listing conditions imposed by the property owner(s). As applicable, we make no representation as to the condition of the property (or properties) in question.

Aerial Map



Luke Streng
Director
+1 614 827 1722
luke.streng@cushwake.com

Doug Falor, SIOR
Senior Director
+1 614 241 4705
doug.falor@cushwake.com

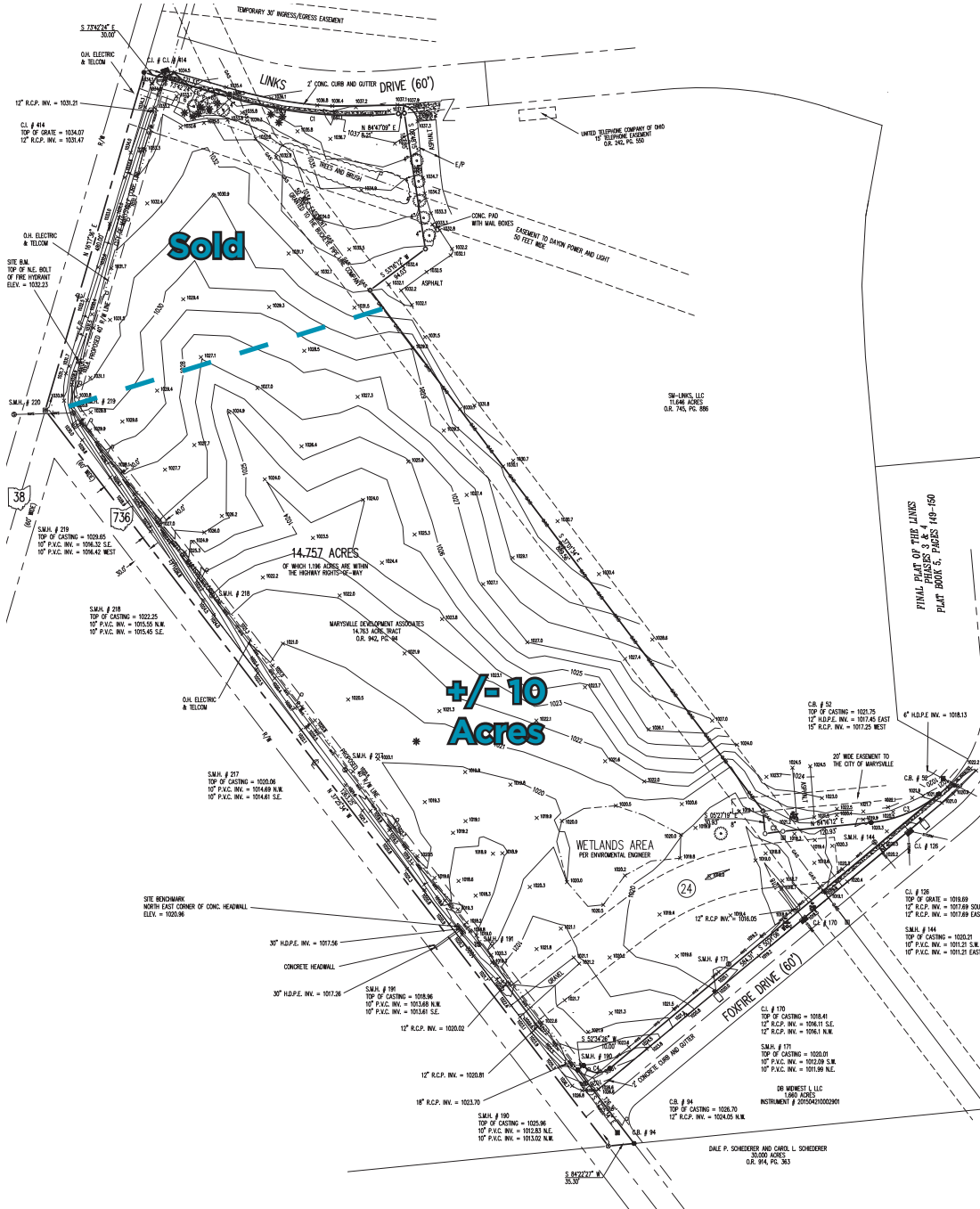
325 John H. McConnell Blvd., Suite 450
Columbus, Ohio
main +1 614 241 4700
fax +1 614 241 4701
cushmanwakefield.com



**CUSHMAN &
WAKEFIELD**

FOR SALE
0 London Avenue
Marysville, OH 43040

Site Survey



Luke Streng
Director
+1 614 827 1722
luke.streng@cushwake.com

Doug Falor, SIOR
Senior Director
+1 614 241 4705
doug.falor@cushwake.com

325 John H. McConnell Blvd., Suite 450
Columbus, Ohio
main +1 614 241 4700
fax +1 614 241 4701
cushmanwakefield.com