



**CUSHMAN &
WAKEFIELD**
Commerce

FOR SALE OR LEASE

Central Plaza Unit O

3855 South 500 West / Salt Lake City, UT

UNIT O



Sale Price: \$405,440.00

Lease Rate: \$3,500.00 per month, NNN

Property Highlights

- Size: 5,068 SF
Office: 3,868 SF
Warehouse: 1,200 SF
- Power: 3phase
- Year Built: 1979
- 2016 Property Tax: \$4,957.00
- (1) 10' x 10' ground level overhead door
- 11 private office, large bull pen, reception and 2 restrooms
- Ample parking
- Great freeway access



Bob Mills

Executive Director
+1 801 303 5551
bmills@comre.com

170 South Main Street, Suite 1600
Salt Lake City, UT 84101
Main +1 801 322 2000
Fax +1 801 322 2040
comre.com

Independently Owned and Operated / A Member of the Cushman & Wakefield Alliance

Cushman & Wakefield Copyright 2016. No warranty or representation, express or implied, is made to the accuracy or completeness of the information contained herein, and same is submitted subject to errors, omissions, change of price, rental or other conditions, withdrawal without notice, and to any special listing conditions imposed by the property owner(s). As applicable, we make no representation as to the condition of the property (or properties) in question. (path: G:\1 - Projects\Mills, B\1 - Flyers\3855s500w_CentralPlaza_O)

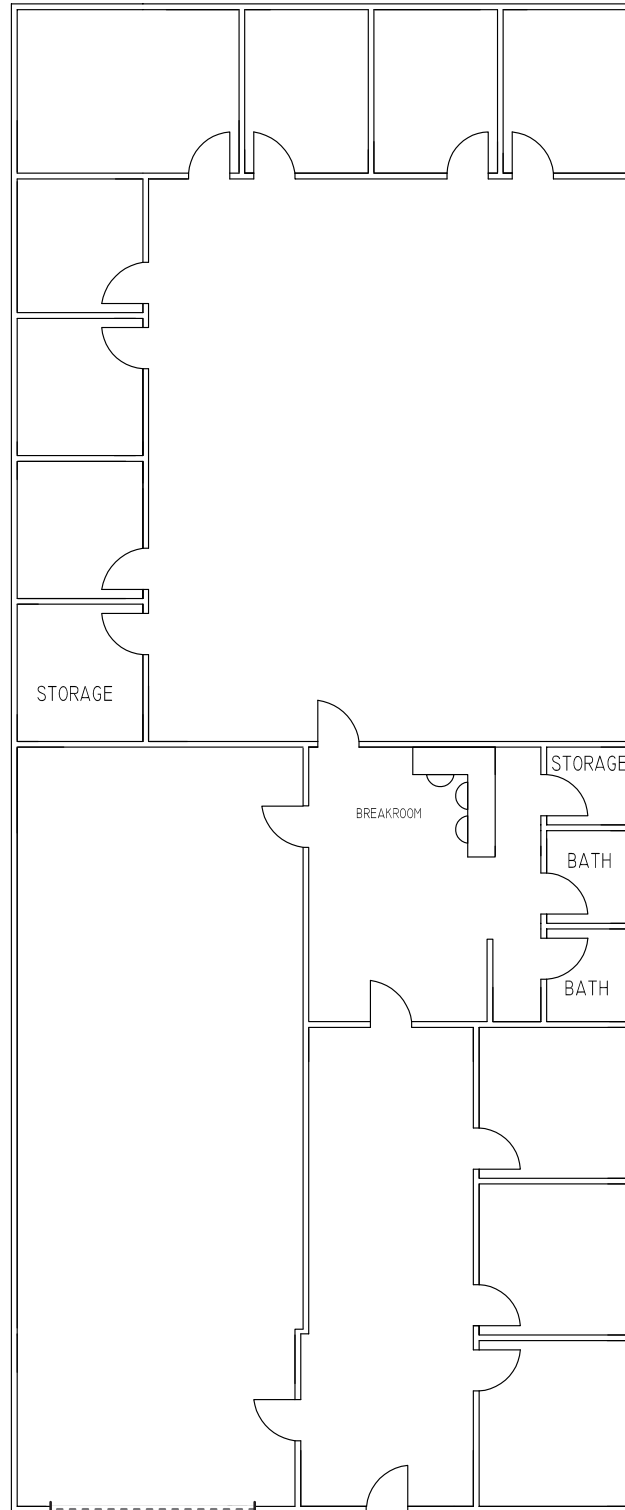


**CUSHMAN &
WAKEFIELD**
Commerce

FOR SALE OR LEASE

Central Plaza Unit O

3855 South 500 West / Salt Lake City, UT



Bob Mills
Executive Director
+1 801 303 5551
bmills@comre.com

170 South Main Street, Suite 1600
Salt Lake City, UT 84101
Main +1 801 322 2000
Fax +1 801 322 2040
comre.com

Independently Owned and Operated / A Member of the Cushman & Wakefield Alliance

Cushman & Wakefield Copyright 2016. No warranty or representation, express or implied, is made to the accuracy or completeness of the information contained herein, and same is submitted subject to errors, omissions, change of price, rental or other conditions, withdrawal without notice, and to any special listing conditions imposed by the property owner(s). As applicable, we make no representation as to the condition of the property (or properties) in question. (path: G:\1 - Projects\Mills, B\1 - Flyers\3855s500w_CentralPlaza_O)